



DVETR2800D Series

HIGH RELIABILITY HYBRID DC-DC CONVERTERS WITH INTEGRAL EMI FILTER

DESCRIPTION

The DVETR series of high reliability DC-DC converters is operable over the full military (-55 °C to +125 °C) temperature range with no power derating. Unique to the DVETR series is a fault tolerant magnetic feedback circuit. Operating at a nominal fixed frequency of 500 kHz per stage, these regulated, isolated units utilize well-controlled undervoltage lockout circuitry to eliminate slow start-up problems.

These converters are designed and manufactured in a facility qualified to ISO9001 and certified to MIL-PRF-38534 and MIL-STD-883.

This product may incorporate one or more of the following U.S. patents:

5,784,266
5,790,389
5,963,438
5,999,433
6,005,780
6,084,792
6,118,673

FEATURES

- High Reliability
- Very Low Output Noise
- Wide Input Voltage Range: 15 to 50 Volts per MIL-STD-704
- Up to 40 Watts Output Power
- Fault Tolerant Magnetic Feedback Circuit
- NO Use of Optoisolators
- Undervoltage Lockout
- Indefinite Short Circuit Protection
- Current Limit Protection
- Industry Standard Pinout
- High Input Transient Voltage: 80 Volts for 1 sec per MIL-STD-704A
- Precision Solder Seal Hermetic Package
- High Power Density: > 30 W/in³
- Custom Versions Available
- Additional Environmental Screening Available
- No External EMI Filter Required
- Meets MIL-STD-461C and MIL-STD-461D EMC Requirements
- Protects Against Conducted Susceptibility Specified in MIL-STD-461C, CS01 and CS02
- Flanged and Non-flanged Versions Available
- MIL-PRF-38534 Element Evaluated Components

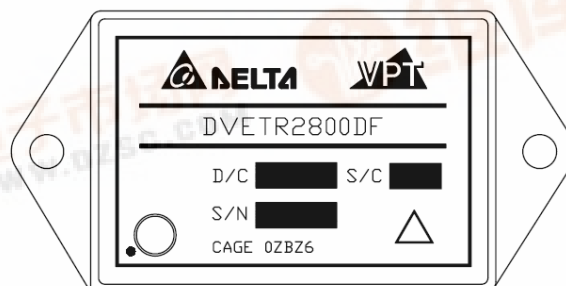


Figure 1 – DVETR2800D / DVETR2800DF DC-DC Converter
(Not To Scale)



DVETR2800D Series

SPECIFICATIONS ($T_{CASE} = -55^{\circ}\text{C}$ to $+125^{\circ}\text{C}$, $V_{IN} = +28\text{V} \pm 5\%$, Full Load⁵, Unless Otherwise Specified)

ABSOLUTE MAXIMUM RATINGS

Input Voltage (Continuous)	50 V _{DC}	Junction Temperature Rise to Case	+15°C
Input Voltage (Transient, 1 second)	80 Volts	Storage Temperature	-65°C to +150°C
Output Power ¹	40 Watts	Lead Solder Temperature (10 seconds)	270°C
Power Dissipation (Full Load, $T_{CASE} = +125^{\circ}\text{C}$)	14 Watts	Weight (Maximum) (Un-Flanged / Flanged)	(51 / 55) Grams

Parameter		Conditions	DVETR2805D			DVETR2812D			Units
			Min	Typ	Max	Min	Typ	Max	
STATIC									
INPUT Voltage ⁴		Continuous	15	28	50	15	28	50	V
		Transient, 1 sec	-	-	80	-	-	80	V
Current		Inhibited	-	-	6	-	-	6	mA
		No Load	-	-	90	-	-	90	mA
Inhibit Pin Input ⁴			0	-	1.5	0	-	1.5	V
Inhibit Pin Open Circuit Voltage ⁴			9.0	11.0	13.0	9.0	11.0	13.0	V
UVLO Turn On			13.5	-	14.8	13.5	-	14.8	V
UVLO Turn Off ⁴			11.0	-	14.5	11.0	-	14.5	V
OUTPUT Voltage ⁵	+V _{OUT}	T _{CASE} = 25°C	4.95	5.0	5.05	11.88	12.0	12.12	V
	+V _{OUT}	T _{CASE} = -55°C to +125°C	4.925	5.0	5.075	11.82	12.0	12.18	V
	-V _{OUT}	T _{CASE} = 25°C	4.80	5.0	5.20	11.80	12.0	12.20	V
	-V _{OUT}	T _{CASE} = -55°C to +125°C	4.70	5.0	5.30	11.64	12.0	12.36	V
Power ^{3,6}	Total		0	-	30	0	-	40	W
	±V _{OUT}	Either Output	0	-	21	0	-	28	W
Current ^{3,6}	±V _{OUT}	Either Output	0	-	4.2	0	-	2.33	A
Ripple Voltage	±V _{OUT}	Full Load ⁵ , 20Hz to 10MHz	-	-	60	-	-	50	mV _{p-p}
Line Regulation	+V _{OUT}	V _{IN} = 16V to 40V	-	-	20	-	-	20	mV
	-V _{OUT}	V _{IN} = 16V to 40V	-	-	200	-	-	200	mV
Load Regulation	+V _{OUT}	No Load to Full Load ⁵	-	-	50	-	-	50	mV
	-V _{OUT}	No Load to Full Load ⁵	-	-	200	-	-	200	mV
Cross Regulation	-V _{OUT}	+Load 70%, -Load 30% +Load 30%, -Load 70%	-	-	650	-	-	650	mV
EFFICIENCY		Full Load ⁵	70	-	-	74	-	-	%
LOAD FAULT POWER DISSIPATION		Overload ⁴	-	-	16	-	-	14	W
		Short Circuit	-	-	16	-	-	14	W
CAPACITIVE LOAD ⁴		Either Output	-	-	500	-	-	500	μF
SWITCHING FREQUENCY			400	500	550	400	500	550	kHz
ISOLATION		500 V _{DC} , T _{CASE} = 25°C	100	-	-	100	-	-	MΩ
MTBF (MIL-HDBK-217F)		AIF @ T _C = 55°C	-	413	-	-	413	-	kHrs

See notes next page.



DVETR2800D Series

SPECIFICATIONS ($T_{CASE} = -55^{\circ}\text{C}$ to $+125^{\circ}\text{C}$, $V_{IN} = +28\text{V} \pm 5\%$, Full Load⁵, Unless Otherwise Specified)

ABSOLUTE MAXIMUM RATINGS

Input Voltage (Continuous)	50 V _{DC}	Junction Temperature Rise to Case	+15°C
Input Voltage (Transient, 1 second)	80 Volts	Storage Temperature	-65°C to +150°C
Output Power ¹	40 Watts	Lead Solder Temperature (10 seconds)	270°C
Power Dissipation (Full Load, $T_{CASE} = +125^{\circ}\text{C}$)	14 Watts	Weight (Maximum) (Un-Flanged / Flanged)	(51 / 55) Grams

Parameter		Conditions	DVETR2805D			DVETR2812D			Units
			Min	Typ	Max	Min	Typ	Max	
DYNAMIC									
Load Step Output Transient	±V _{OUT}	Half Load to Full Load	-	-	500	-	-	600	mV _{PK}
Load Step Recovery ²			-	-	350	-	-	400	μSec
Line Step Output Transient ⁴	±V _{OUT}	V _{IN} = 16V to 40V	-	150	600	-	850	1200	mV _{PK}
Line Step Recovery ^{2, 4}			-	150	500	-	300	500	μSec
Turn On Delay	±V _{OUT}	V _{IN} = 0V to 28V	-	-	20	-	-	20	mSec
Turn On Overshoot			-	-	50	-	-	50	mV _{PK}

- Notes:
1. Dependant on output voltage.
 2. Time for output voltage to settle within 1% of its nominal value.
 3. Derate linearly to 0 at 135°C .
 4. Verified by qualification testing.
 5. Half load at $+V_{OUT}$ and half load at $-V_{OUT}$.
 6. Up to 70% of the total power or current can be drawn from any one of the two outputs.



DVETR2800D Series

SPECIFICATIONS ($T_{CASE} = -55^{\circ}\text{C}$ to $+125^{\circ}\text{C}$, $V_{IN} = +28\text{V} \pm 5\%$, Full Load⁵, Unless Otherwise Specified)

ABSOLUTE MAXIMUM RATINGS

Input Voltage (Continuous)	50 V _{DC}	Junction Temperature Rise to Case	+15°C
Input Voltage (Transient, 1 second)	80 Volts	Storage Temperature	-65°C to +150°C
Output Power ¹	40 Watts	Lead Solder Temperature (10 seconds)	270°C
Power Dissipation (Full Load, $T_{CASE} = +125^{\circ}\text{C}$)	14 Watts	Weight (Maximum) (Un-Flanged / Flanged)	(51 / 55) Grams

Parameter		Conditions	DVETR2815D			Units
			Min	Typ	Max	
STATIC						
INPUT Voltage ⁴		Continuous	15	28	50	V
		Transient, 1 sec	-	-	80	V
Current		Inhibited	-	-	6	mA
		No Load	-	-	90	mA
Inhibit Pin Input ⁴			0	-	1.5	V
Inhibit Pin Open Circuit Voltage ⁴			9.0	11.0	13.0	V
UVLO Turn On			13.5	-	14.8	V
UVLO Turn Off ⁴			11.0	-	14.5	V
OUTPUT Voltage ⁵	+V _{OUT}	T _{CASE} = 25°C	14.85	15.0	15.15	V
	+V _{OUT}	T _{CASE} = -55°C to +125°C	14.70	15.0	15.30	V
	-V _{OUT}	T _{CASE} = 25°C	14.70	15.0	15.30	V
	-V _{OUT}	T _{CASE} = -55°C to +125°C	14.55	15.0	15.45	V
Power ^{3,6}	Total		-	-	40	W
	±V _{OUT}	Either Output	-	-	28	W
Current ^{3,6}	±V _{OUT}	Either Output	-	-	1.87	A
Ripple Voltage	±V _{OUT}	Full Load ⁵ , 20Hz to 10MHz	-	-	50	mV _{p-p}
Line Regulation	+V _{OUT}	V _{IN} = 16V to 40V	-	-	20	mV
	-V _{OUT}	V _{IN} = 16V to 40V	-	-	200	mV
Load Regulation	+V _{OUT}	No Load to Full Load ⁵	-	-	50	mV
	-V _{OUT}	No Load to Full Load ⁵	-	-	200	mV
Cross Regulation	-V _{OUT}	+Load 70%, -Load 30% +Load 30%, -Load 70%	-	-	650	mV
EFFICIENCY		Full Load ⁵	75	-	-	%
LOAD FAULT POWER DISSIPATION		Overload ⁴	-	-	14	W
		Short Circuit	-	-	14	W
CAPACITIVE LOAD ⁴		Either Output	-	-	500	μF
SWITCHING FREQUENCY			400	500	550	kHz
ISOLATION		500 V _{DC} , T _{CASE} = 25°C	100	-	-	MΩ
MTBF (MIL-HDBK-217F)		AIF @ T _C = 55°C	-	413	-	kHrs

See notes next page.



DVETR2800D Series

SPECIFICATIONS ($T_{CASE} = -55^{\circ}\text{C}$ to $+125^{\circ}\text{C}$, $V_{IN} = +28\text{V} \pm 5\%$, Full Load⁵, Unless Otherwise Specified)

ABSOLUTE MAXIMUM RATINGS

Input Voltage (Continuous)	50 V _{DC}	Junction Temperature Rise to Case	+15°C
Input Voltage (Transient, 1 second)	80 Volts	Storage Temperature	-65°C to +150°C
Output Power ¹	40 Watts	Lead Solder Temperature (10 seconds)	270°C
Power Dissipation (Full Load, $T_{CASE} = +125^{\circ}\text{C}$)	14 Watts	Weight (Maximum) (Un-Flanged / Flanged)	(51 / 55) Grams

Parameter		Conditions	DVETR2815D			Units
			Min	Typ	Max	
DYNAMIC						
Load Step Output Transient	±V _{OUT}	Half Load to Full Load	-	-	600	mV _{PK}
Load Step Recovery ²			-	-	300	μSec
Line Step Output Transient ⁴	±V _{OUT}	V _{IN} = 16V to 40V	-	850	1200	mV _{PK}
Line Step Recovery ^{2, 4}			-	300	500	μSec
Turn On Delay	±V _{OUT}	V _{IN} = 0V to 28V	-	-	20	mSec
Turn On Overshoot			-	-	50	mV _{PK}

- Notes:
1. Dependant on output voltage.
 2. Time for output voltage to settle within 1% of its nominal value.
 3. Derate linearly to 0 at 135°C .
 4. Verified by qualification testing.
 5. Half load at $+V_{OUT}$ and half load at $-V_{OUT}$.
 6. Up to 70% of the total power or current can be drawn from any one of the two outputs.

BLOCK DIAGRAM

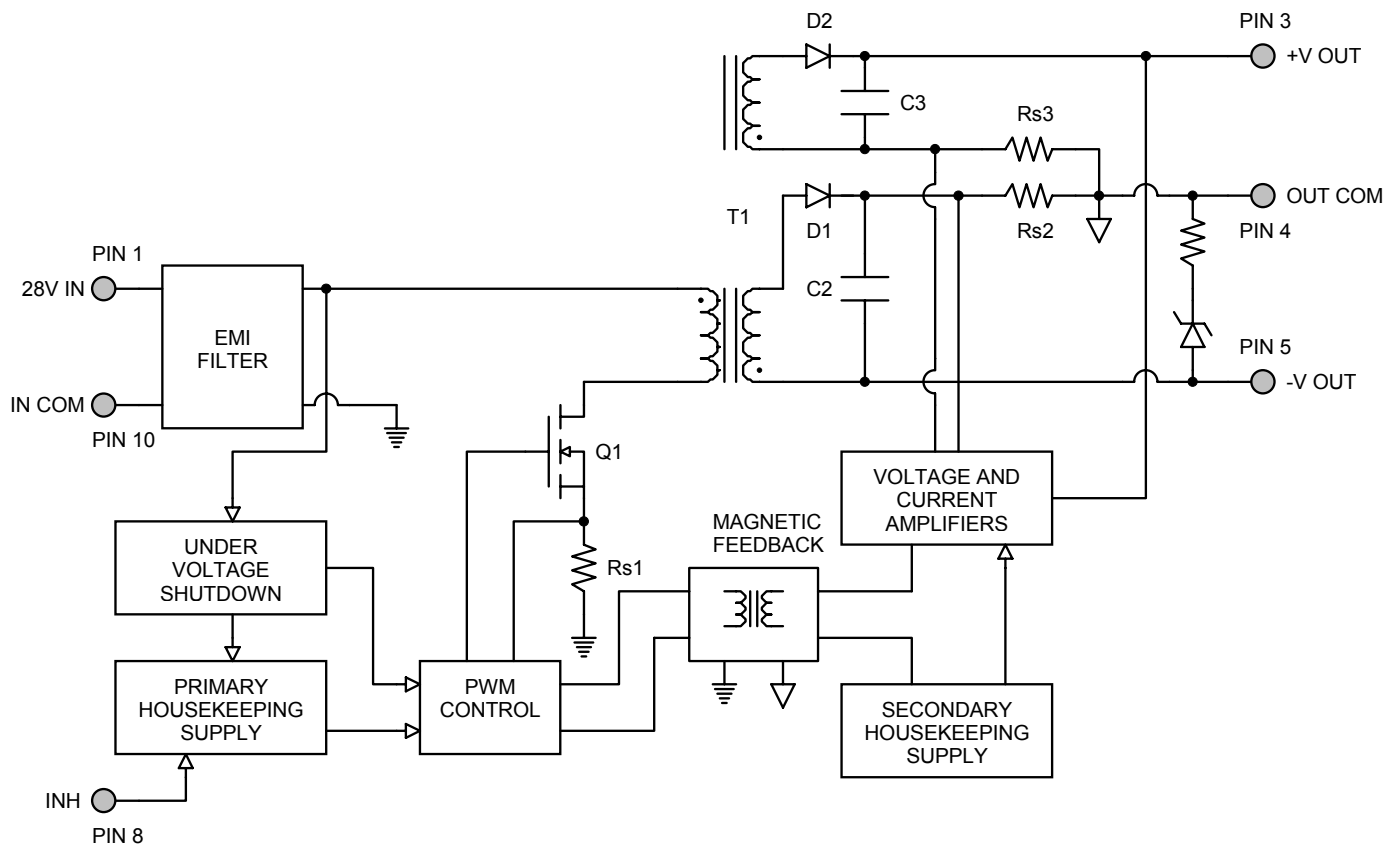


Figure 2

CONNECTION DIAGRAM

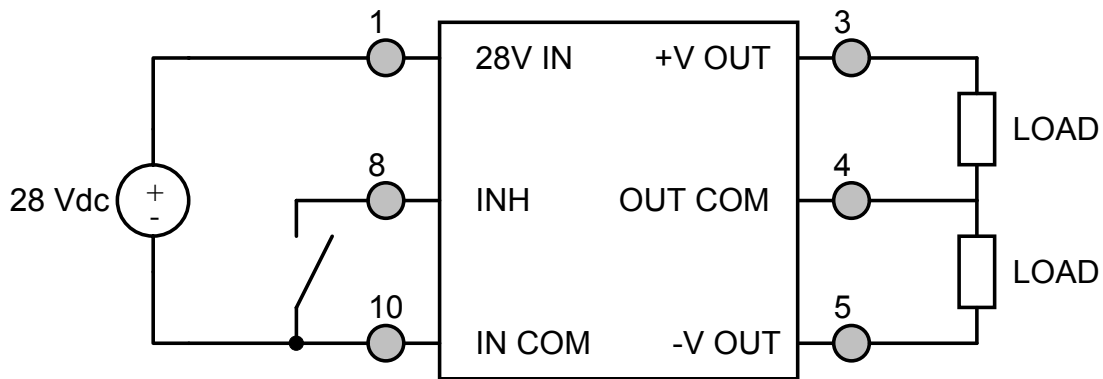


Figure 3

INHIBIT DRIVE CONNECTION DIAGRAMS

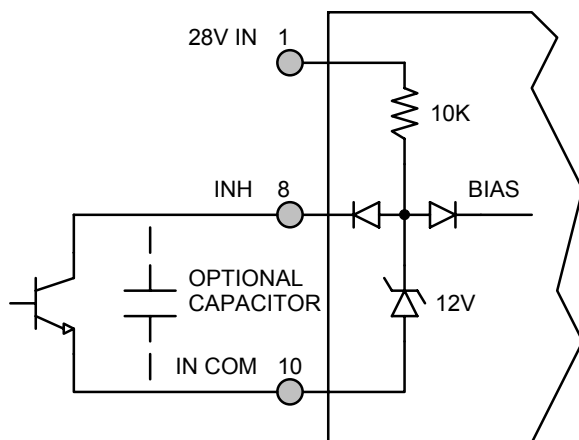


Figure 4 – Internal Inhibit Circuit and Recommended Drive
(Shown with optional capacitor for turn-on delay)

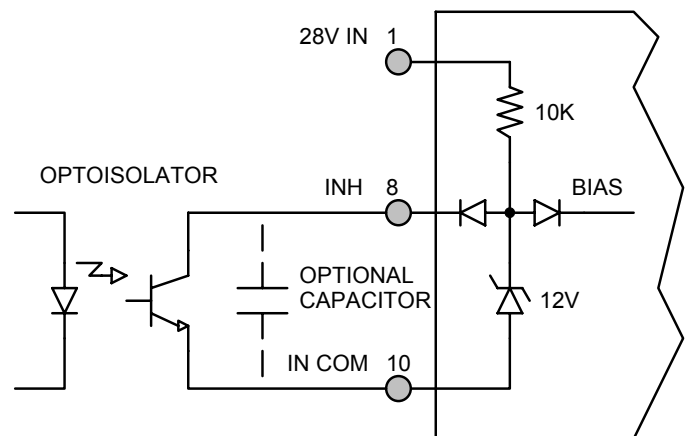


Figure 5 – Isolated Inhibit Drive
(Shown with optional capacitor for turn-on delay)

EFFICIENCY PERFORMANCE CURVES ($T_{CASE} = 25^{\circ}\text{C}$, Full Load, Unless Otherwise Specified)

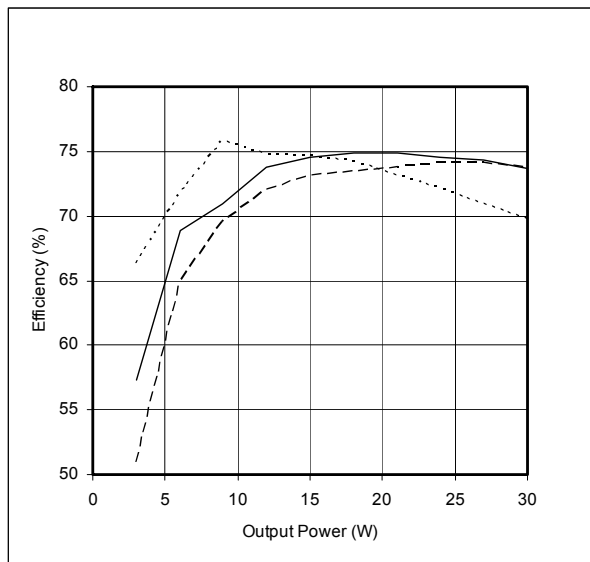
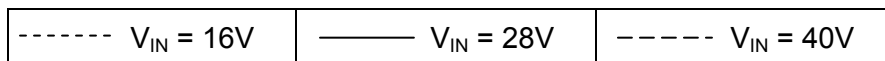


Figure 6 – DVETR2805D
Efficiency (%) vs. Output Power (W)

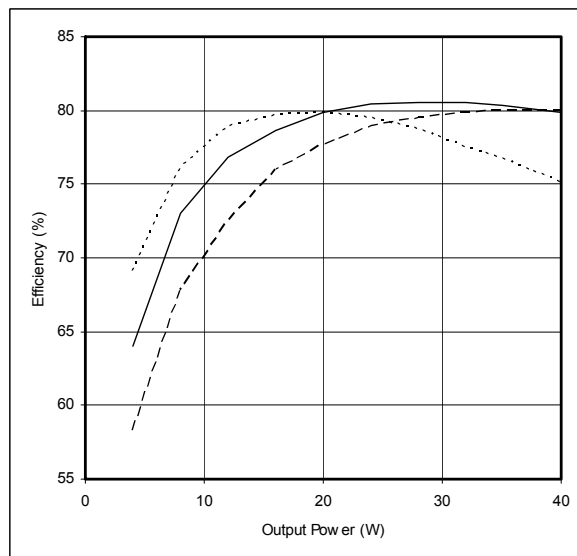


Figure 7 – DVETR2812D
Efficiency (%) vs. Output Power (W)

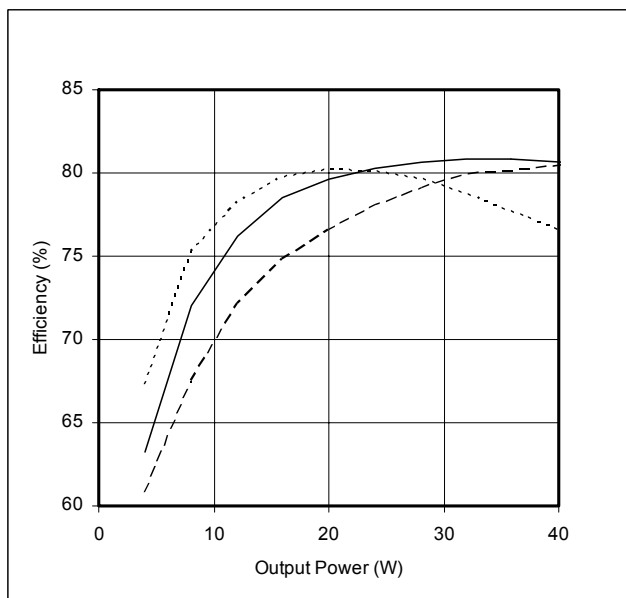
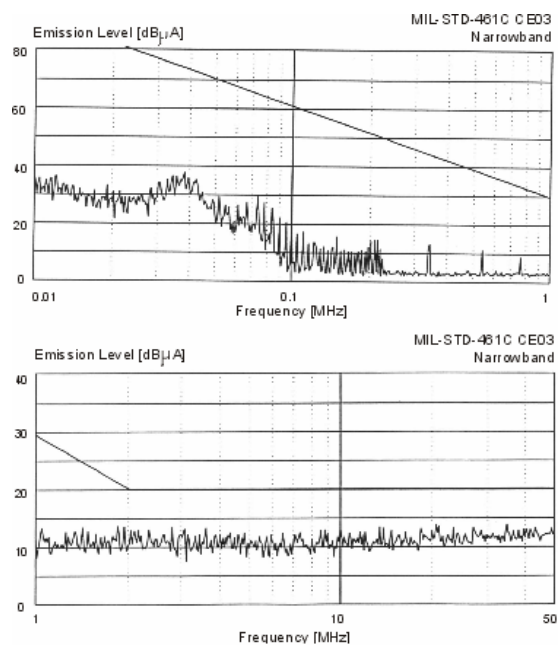


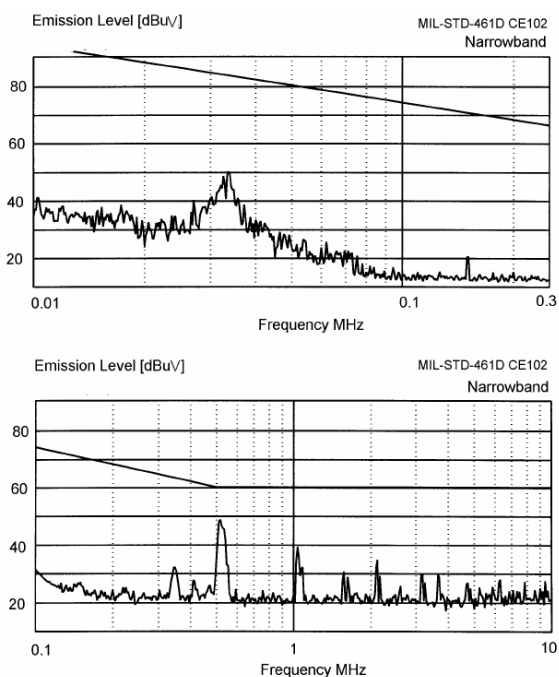
Figure 8 – DVETR2815D
Efficiency (%) vs. Output Power (W)

EMI PERFORMANCE CURVES

($T_{CASE} = 25^{\circ}\text{C}$, $V_{IN} = +28\text{V} \pm 5\%$, Full Load, Unless Otherwise Specified)

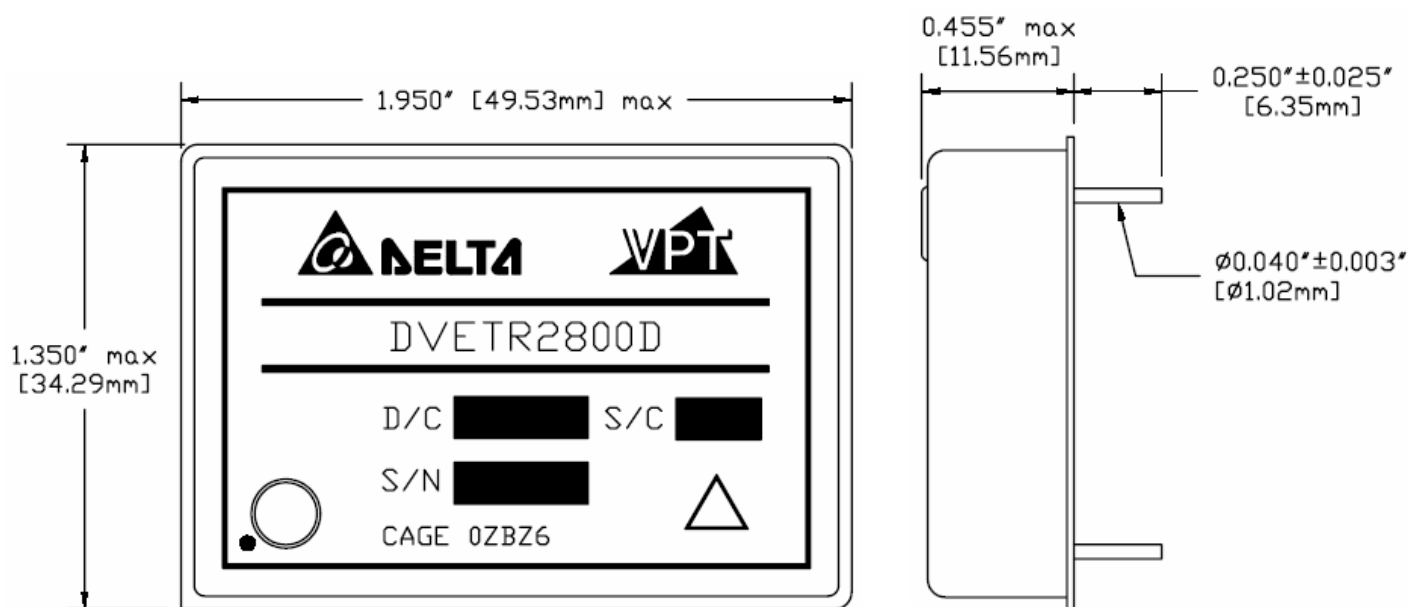


**Figure 9 – MIL-STD-461C
DVETR2800D**



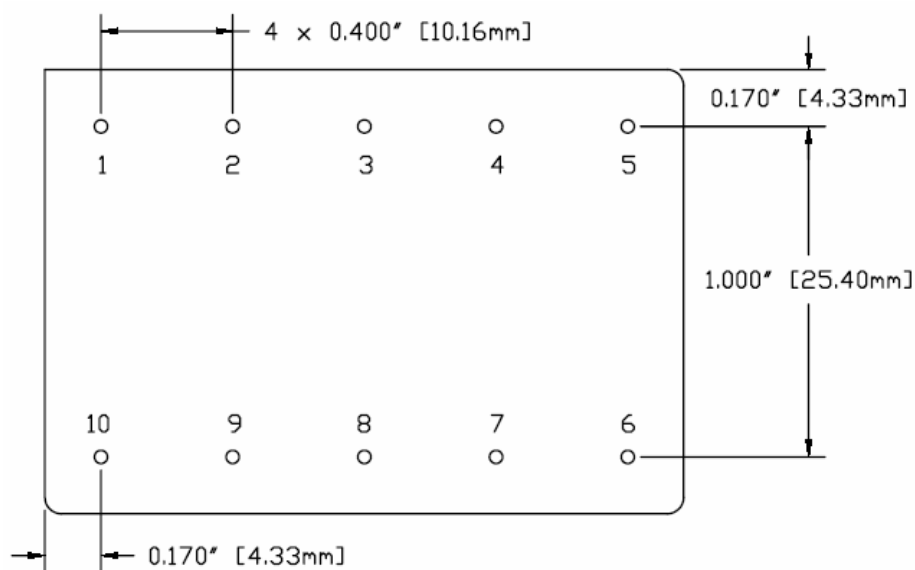
**Figure 10 – MIL-STD-461D
DVETR2800D**

PACKAGE SPECIFICATIONS (NON-FLANGED, SOLDER SEAL)



TOP VIEW

SIDE VIEW

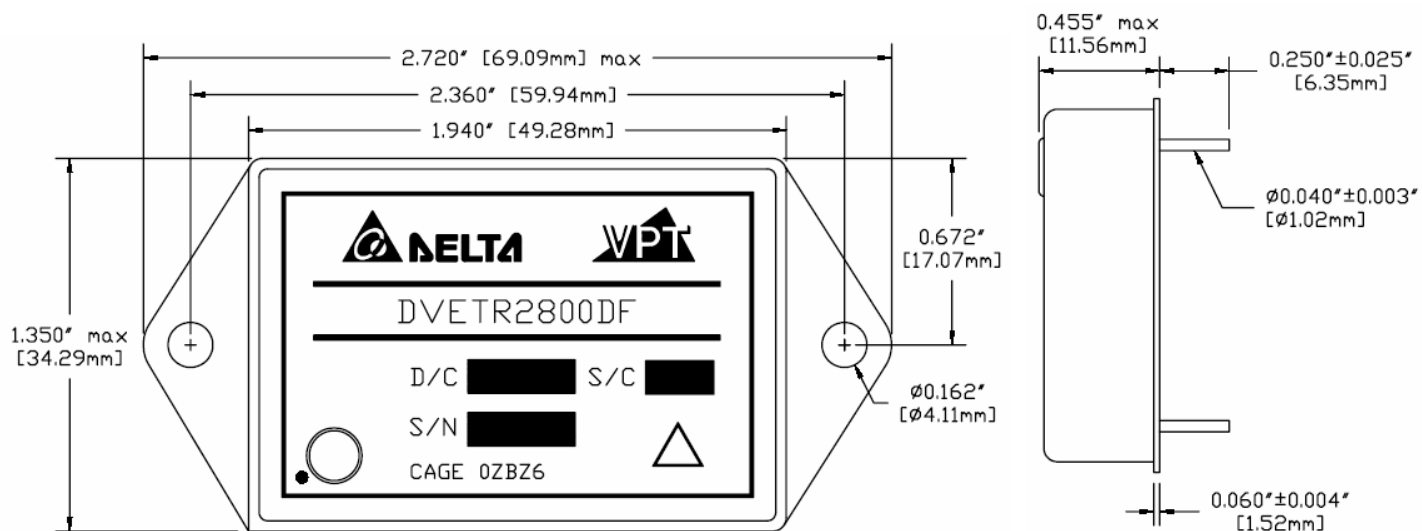


BOTTOM VIEW

PIN	FUNCTION
1	28V IN
2	N/C
3	+V OUT
4	OUT COM
5	-V OUT
6	N/C
7	CASE
8	INHIBIT
9	N/C
10	IN COM

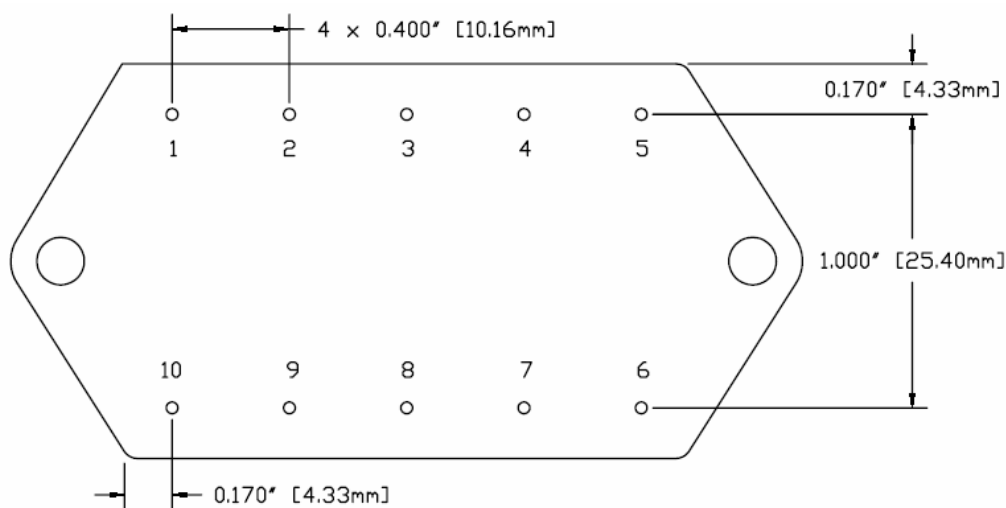
Figure 11 – Non-Flanged, Solder Seal Tin Plated Package and Pinout
(Dimensional Limits are ±0.005" Unless Otherwise Stated)

PACKAGE SPECIFICATIONS (FLANGED, SOLDER SEAL)



TOP VIEW

SIDE VIEW



BOTTOM VIEW

PIN	FUNCTION
1	28V IN
2	N/C
3	+V OUT
4	OUT COM
5	-V OUT
6	N/C
7	CASE
8	INHIBIT
9	N/C
10	IN COM

Figure 12 – Flanged, Solder Seal Tin Plated Package and Pinout
(Dimensional Limits are ±0.005" Unless Otherwise Stated)

PACKAGE PIN DESCRIPTION

Pin	Function	Description
1	28V IN	Positive Input Voltage Connection
2	N/C	No Connection
3	+V OUT	Positive Output Voltage Connection
4	OUT COM	Output Common Connection
5	-V OUT	Negative Output Voltage Connection
6	N/C	No Connection
7	CASE	Case Connection
8	INHIBIT	Logic Low = Disabled Output. Connecting the inhibit pin to input common causes converter shutdown. Logic High = Enabled Output. Unconnected or open collector TTL.
9	N/C	No Connection
10	IN COM	Input Common Connection

ENVIRONMENTAL SCREENING (100% Tested Per MIL-STD-883 as referenced to MIL-PRF-38534)

Screening	MIL-STD-883	Standard (No Suffix)	Extended /ES
Non-Destructive Bond Pull	Method 2023	•	•
Internal Visual	Method 2017, 2032 Internal Procedure	•	•
Temperature Cycling	Method 1010, Condition C Method 1010, -55°C to 125°C		•
Constant Acceleration	Method 2001, 3000g, Y1 Direction Method 2001, 500g, Y1 Direction		•
PIND	Method 2020, Condition A ²		
Pre Burn-In Electrical	100% at 25°C		
Burn-In	Method 1015, 320 hours at +125°C Method 1015, 160 hours at +125°C 96 hours at +125°C 24 hours at +125°C	•	•
Final Electrical	MIL-PRF-38534, Group A ¹ 100% at 25°C	•	•
Hermeticity	Method 1014, Fine Leak, Condition A Method 1014, Gross Leak, Condition C Dip (1×10^{-3})	•	• •
Radiography	Method 2012 ³		
External Visual	Method 2009	•	•



DVETR2800D Series

ORDERING INFORMATION

DVETR	28	05	D	F	/ES	-	XXX
1	2	3	4	5	6		7

(1)

(2)

(3)

(4)

Product Series	Nominal Input Voltage		Output Voltage		Number of Outputs	
DVETR	28	28 Volts	05 12 15	± 5 Volts ± 12 Volts ± 15 Volts	D	Dual

(5)

(6)

(7)

Package Option		Screening Code ¹		Additional Screening Code
None F	Non-Flanged Flanged	None /ES	Standard Extended	Contact Sales

Notes: 1. VPT Inc. reserves the right to ship higher screened or SMD products to meet lower screened orders at our sole discretion unless specifically forbidden by customer contract.

Please contact your sales representative or the VPT Inc. Sales Department for more information concerning additional environmental screening and testing, different input voltage, output voltage, power requirement, source inspection, and/or special element evaluation for space or other higher quality applications.



DVETR2800D Series

CONTACT INFORMATION

To request a quotation or place orders please contact your sales representative or the VPT Inc. Sales Department at:

Phone: (425) 353-3010
Fax: (425) 353-4030
E-mail: vptsales@vpt-inc.com