

# Panasonic

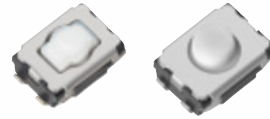
## Light Touch Switches/EVQP2

4.7×3.5 mm Square Light Touch Switches

Japan

Type: **EVQP2**

An extra-small-sized switch for creating medium and short push travel and meeting the needs for a high-operating force and long operation life



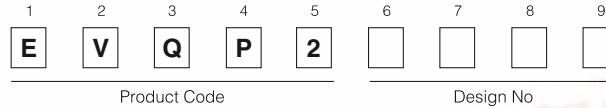
### ■ Features

- Creating medium and short push travel
- Meeting the need for a high operating force and long operation life
- High mountability by J-bent(4 terminals)

### ■ Recommended Applications

- Keyless Entry Systems (Automotive)
- Car Audio Equipment
- Audio Visual Equipment

### ■ Explanation of Part Numbers



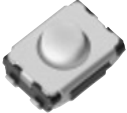
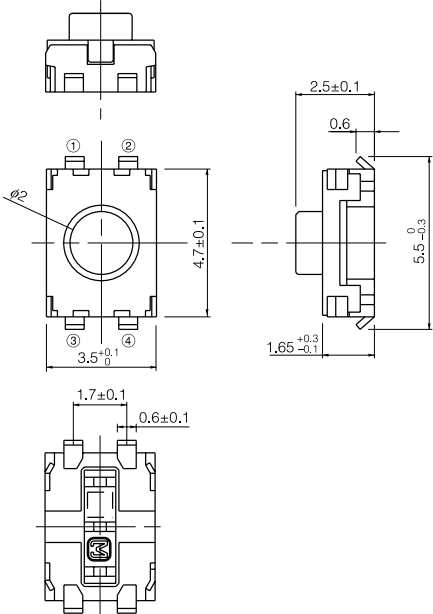
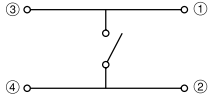
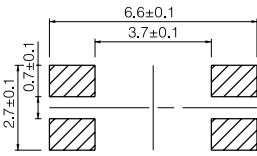
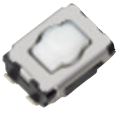
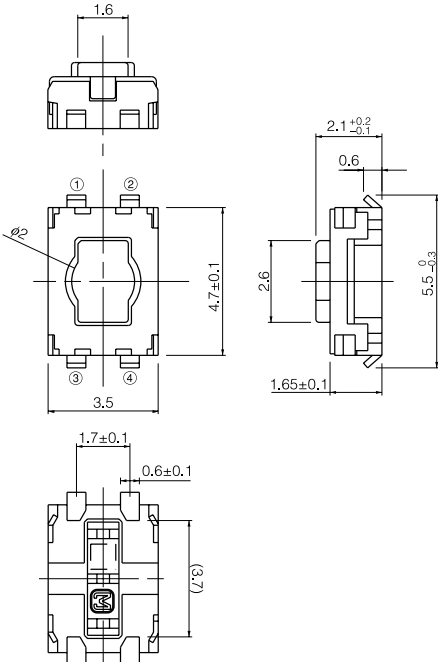
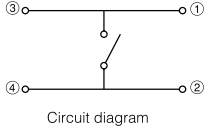
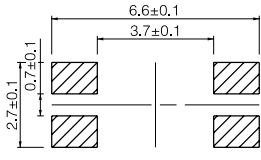
### ■ Major Specifications

|                               |                                 | Medium Push Travel                        | Short Push Travel               |
|-------------------------------|---------------------------------|---|---------------------------------|
| Electrical                    | Power                           | 20 mA 15 V dc max.                        |                                 |
|                               | Contact Resistance              | 100 mΩ max.                               |                                 |
|                               | Insulation Resistance           | 100 mΩ min.                               |                                 |
|                               | Dielectric Withstanding Voltage | 250 V ac (1 minute)                       |                                 |
|                               | Bouncing                        | 10 ms max.                                |                                 |
| Mechanical                    | Operating Force                 | 2.5 N, 3.5 N 5 N                          | 1 N, 1.6 N, 2.4 N, 3.5 N        |
|                               | Travel                          | 0.70 mm                                   | 0.25 mm                         |
|                               | Push Strength                   | 50 N (1 minute)                           |                                 |
| Endurance                     | Operating Life                  | 2.5 N: 1000000 cycles min.                | 1 N, 1.6 N: 1000000 cycles min. |
|                               |                                 | 3.5 N: 500000 cycles min.                 | 2.4 N: 500000 cycles min.       |
|                               |                                 | 5 N: 200000 cycles min.                   | 3.5 N: 200000 cycles min.       |
| Operating Temperature         |                                 | -40 °C to 85 °C                           |                                 |
| Storage Temperature           |                                 | -40 °C to 85 °C (Taping -20 °C to +60 °C) |                                 |
| Minimum Quantity/Packing Unit |                                 | 4000 pcs. (Reel Pack)                     |                                 |
| Quantity/Carton               |                                 | 20000 pcs./case                           |                                 |

Design and specifications are subject to change without notice. Ask factory for technical specifications before purchase and/or use. Whenever a doubt about safety arises from this product, please contact us immediately for technical consultation.



■ Dimensions in mm (not to scale)

|  |  |
|--|--|
| <p><b>No. 1</b></p> <p>Japan</p> <p>Medium push travel<br/>With J-bent terminals<br/>(With Ground terminal)</p>  |  <p>2.5±0.1<br/>0.6<br/>4.7±0.1<br/>5.5<sup>0</sup><sub>-0.3</sub><br/>1.65<sup>+0.3</sup><sub>-0.1</sub><br/>3.5<sup>+0.1</sup><sub>0</sub><br/>1.7±0.1<br/>0.6±0.1</p>  <p>Circuit diagram</p>  <p>Recommended land pattern</p> <p>6.6±0.1<br/>3.7±0.1<br/>2.7±0.1<br/>0.7±0.1</p> |
| <p><b>No. 2</b></p> <p>Japan</p> <p>Short push travel<br/>With J-bent terminals<br/>(With Ground terminal)</p>  |  <p>1.6<br/>2.1<sup>+0.2</sup><sub>-0.1</sub><br/>0.6<br/>4.7±0.1<br/>5.5<sup>0</sup><sub>-0.3</sub><br/>1.65±0.1<br/>3.5<br/>1.7±0.1<br/>0.6±0.1<br/>(3.7)</p>  <p>Circuit diagram</p>  <p>Recommended land pattern</p> <p>6.6±0.1<br/>3.7±0.1<br/>2.7±0.1<br/>0.7±0.1</p>      |