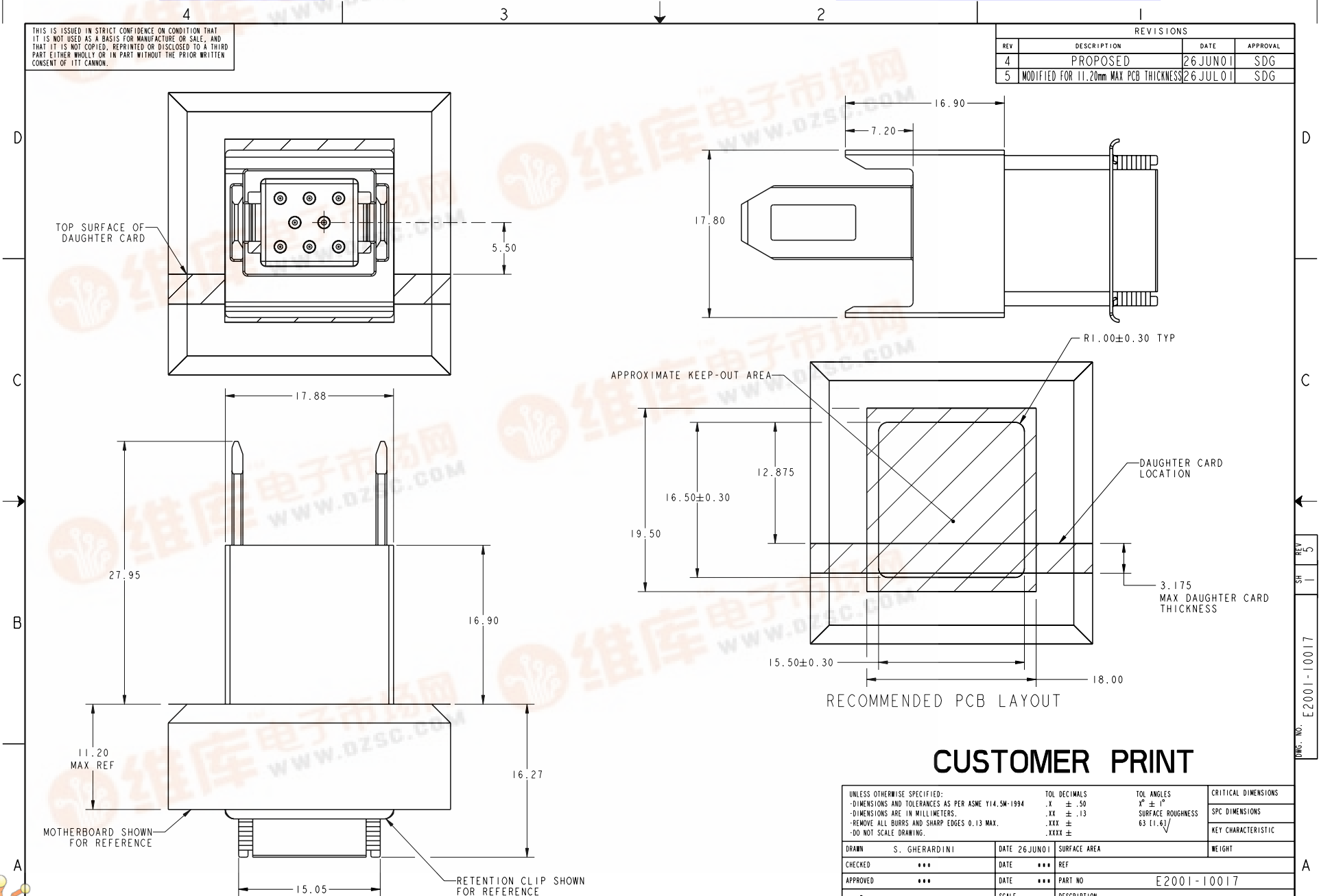


查询E2001-10017供应商

捷多邦, 专业PCB打样工厂, 24小时加急出货

THIS IS ISSUED IN STRICT CONFIDENCE ON CONDITION THAT IT IS NOT USED AS A BASIS FOR MANUFACTURE OR SALE, AND THAT IT IS NOT COPIED, REPRINTED OR DISCLOSED TO A THIRD PARTY EITHER WHOLLY OR IN PART WITHOUT THE PRIOR WRITTEN CONSENT OF ITT CANNON.

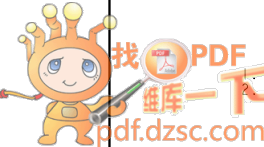
REVISIONS			
REV	DESCRIPTION	DATE	APPROVAL
4	PROPOSED	26 JUN 01	SDG
5	MODIFIED FOR 11.20mm MAX PCB THICKNESS	26 JUL 01	SDG



### CUSTOMER PRINT

UNLESS OTHERWISE SPECIFIED: -DIMENSIONS AND TOLERANCES AS PER ASME Y14.5M-1994 -DIMENSIONS ARE IN MILLIMETERS. -REMOVE ALL BURRS AND SHARP EDGES 0.13 MAX. -DO NOT SCALE DRAWING.		TOL DECIMALS X ± .50 .XX ± .13 .XXX ± .XXXX ±	TOL ANGLES ° ± 1° SURFACE ROUGHNESS 63 (1.6)	CRITICAL DIMENSIONS SPC DIMENSIONS KEY CHARACTERISTIC
DRAWN S. GHERARDINI	DATE 26 JUN 01	SURFACE AREA		
CHECKED ***	DATE ***	REF		
APPROVED ***	DATE ***	PART NO E2001-10017		
ITT Industries ITT Cannon 666 E. DYER RD, SANTA ANA, CA 92705		SCALE 4.000	DESCRIPTION ASSEMBLY, VERTICAL, 8 POSITION, PHD-TEMPUS	
3RD ANGLE PROJECTION		SIZE C	WEIGHT	
		SHEET ***	E2001-10017	
		REV 5		

HOUSING MATERIAL: LCP OR SIMILAR, UL 94 V-0, BLACK. RETENTION CLIP: STAINLESS STEEL.  
ALL DIMENSIONS ARE SUBJECT TO CHANGE PENDING PROTOTYPE VERIFICATION.



DWG. NO. E2001-10017