



查询FSB210供应商

DIOTEC ELECTRONICS CORP.
18020 Hobart Blvd., Unit B
Gardena, CA 90248 U.S.A
Tel.: (310) 767-1052 Fax: (310) 767-7958

捷多邦, 专业PCB打样工厂, 24小时加急出货

Data Sheet No. BFSB-200-1B

2 AMP FAST RECOVERY BRIDGE RECTIFIERS

FEATURES

- PRV Ratings from 50 to 1000 Volts
- Surge overload rating to 50 Amps peak
- Reliable low cost molded plastic construction
- Ideal for printed circuit board applications
- Fast switching for high efficiency

UL RECOGNIZED - FILE #E124962

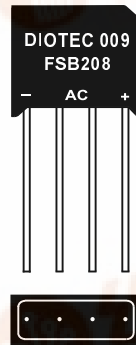
RoHS COMPLIANT

MECHANICAL DATA

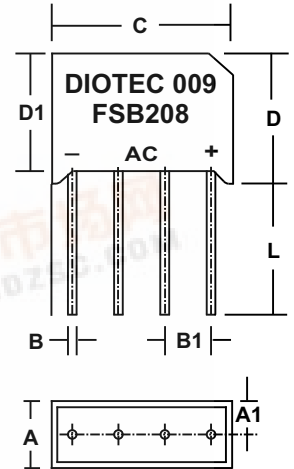
- Case: Molded Epoxy (UL Flammability Rating 94V-0)
- Terminals: Round silver plated pins
- Soldering: Per MIL-STD 202 Method 208 guaranteed
- Polarity: Marked on case
- Mounting Position: Any
- Weight: 0.1 Ounces (2.8 Grams)

MECHANICAL SPECIFICATION

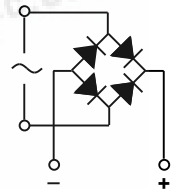
ACTUAL SIZE OF SB2 PACKAGE



SERIES FSB200 - FSB210



SYM	MILLIMETERS		INCHES	
	MIN	MAX	MIN	MAX
A	5.99	7.01	0.236	0.276
A1	2.99	3.51	0.118	0.138
B	0.71	0.89	0.028	0.035
B1	3.55	4.00	0.140	0.160
C	16.0	18.0	0.63	0.71
D	14.0	15.0	0.55	0.59
D1	13.2	13.7	0.52	0.54
L	12.7	n/a	0.50	n/a



MAXIMUM RATINGS & ELECTRICAL CHARACTERISTICS

Ratings at 25 °C ambient temperature unless otherwise specified.
Single phase, half wave, 60Hz, resistive or inductive load.
For capacitive loads, derate current by 20%.

PARAMETER (TEST CONDITIONS)	SYMBOL	RATINGS								UNITS
		FSB 200	FSB 201	FSB 202	FSB 204	FSB 206	FSB 208	FSB 210		
Series Number										
Maximum DC Blocking Voltage	V _{RM}	50	100	200	400	600	800	1000		VOLTS
Maximum RMS Voltage	V _{RMS}	35	70	140	280	420	560	700		
Maximum Peak Recurrent Reverse Voltage	V _{RRM}	50	100	200	400	600	800	1000		
Average Forward Rectified Current @ T _A = 55 °C	I _O	2								AMPS
Peak Forward Surge Current (8.3mS single half sine wave superimposed on rated load)	I _{FSM}	50								
Maximum Forward Voltage at 1 Amp DC	V _{FM}	1								VOLTS
Maximum Average DC Reverse Current @ T _A = 25 °C	I _{RM}	10								A
At Rated DC Blocking Voltage @ T _A = 125 °C		500								
Maximum Reverse Recovery Time (Note 1) @ T _J = 25 °C	T _{RR}	200		300		500			nS	
Maximum Thermal Resistance, Junction to Ambient (Note 2)	R _{θJA}	30								°C/W
Junction Operating and Storage Temperature Range	T _J , T _{STG}	-55 to +150								°C

NOTES: (1) T_J = 25 °C, I_F = 0.5A, I_R = 1A, I_{RR} = 0.25A

3.01 02150