

# International IOR Rectifier

- Logic-Level Gate Drive
- Advanced Process Technology
- Isolated Package
- High Voltage Isolation = 2.5KV RMS ⑤
- Sink to Lead Creepage Dist. = 4.8mm
- Fully Avalanche Rated
- Lead-Free

## Description

Fifth Generation HEXFETs from International Rectifier utilize advanced processing techniques to achieve extremely low on-resistance per silicon area. This benefit, combined with the fast switching speed and ruggedized device design that HEXFET Power MOSFETs are well known for, provides the designer with an extremely efficient and reliable device for use in a wide variety of applications.

The TO-220 Fullpak eliminates the need for additional insulating hardware in commercial-industrial applications. The moulding compound used provides a high isolation capability and a low thermal resistance between the tab and external heatsink. This isolation is equivalent to using a 100 micron mica barrier with standard TO-220 product. The Fullpak is mounted to a heatsink using a single clip or by a single screw fixing.

## Absolute Maximum Ratings

|                                 | Parameter                                       | Max.                  | Units |
|---------------------------------|-------------------------------------------------|-----------------------|-------|
| $I_D @ T_C = 25^\circ\text{C}$  | Continuous Drain Current, $V_{GS} @ 10\text{V}$ | 52                    | A     |
| $I_D @ T_C = 100^\circ\text{C}$ | Continuous Drain Current, $V_{GS} @ 10\text{V}$ | 37                    |       |
| $I_{DM}$                        | Pulsed Drain Current ①⑥                         | 310                   |       |
| $P_D @ T_C = 25^\circ\text{C}$  | Power Dissipation                               | 58                    | W     |
|                                 | Linear Derating Factor                          | 0.39                  | W/°C  |
| $V_{GS}$                        | Gate-to-Source Voltage                          | $\pm 16$              | V     |
| $E_{AS}$                        | Single Pulse Avalanche Energy②⑦                 | 340                   | mJ    |
| $I_{AR}$                        | Avalanche Current①⑥                             | 46                    | A     |
| $E_{AR}$                        | Repetitive Avalanche Energy①                    | 5.8                   | mJ    |
| dv/dt                           | Peak Diode Recovery dv/dt ③⑧                    | 5.0                   | V/ns  |
| $T_J$                           | Operating Junction and                          | -55 to +175           | °C    |
| $T_{STG}$                       | Storage Temperature Range                       |                       |       |
|                                 | Soldering Temperature, for 10 seconds           | 300 (1.6mm from case) |       |
|                                 | Mounting torque, 6-32 or M3 screw               | 10 lbf·in (1.1N·m)    |       |

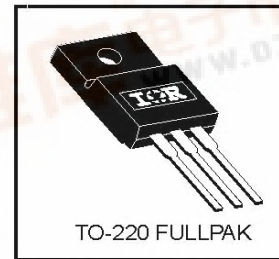
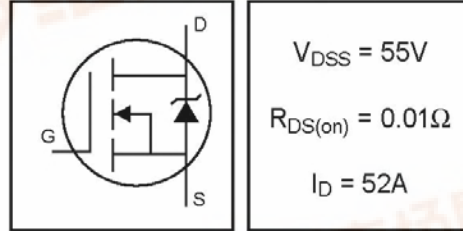
## Thermal Resistance

|                 | Parameter           | Typ. | Max. | Units |
|-----------------|---------------------|------|------|-------|
| $R_{\theta JC}$ | Junction-to-Case    | ---  | 2.6  | °C/W  |
| $R_{\theta JA}$ | Junction-to-Ambient | ---  | 65   |       |

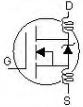
PD-95427A

# IRLI3705NPbF

HEXFET® Power MOSFET



## Electrical Characteristics @ T<sub>J</sub> = 25°C (unless otherwise specified)

|                                      | Parameter                            | Min. | Typ.  | Max.  | Units | Conditions                                                                            |
|--------------------------------------|--------------------------------------|------|-------|-------|-------|---------------------------------------------------------------------------------------|
| V <sub>(BR)DSS</sub>                 | Drain-to-Source Breakdown Voltage    | 55   | —     | —     | V     | V <sub>GS</sub> = 0V, I <sub>D</sub> = 250μA                                          |
| ΔV <sub>(BR)DSS/ΔT<sub>J</sub></sub> | Breakdown Voltage Temp. Coefficient  | —    | 0.056 | —     | V/°C  | Reference to 25°C, I <sub>D</sub> = 1mA <sup>⑥</sup>                                  |
| R <sub>DS(on)</sub>                  | Static Drain-to-Source On-Resistance | —    | —     | 0.010 | Ω     | V <sub>GS</sub> = 10V, I <sub>D</sub> = 28A <sup>④</sup>                              |
|                                      |                                      | —    | —     | 0.012 |       | V <sub>GS</sub> = 5.0V, I <sub>D</sub> = 28A <sup>④</sup>                             |
|                                      |                                      | —    | —     | 0.018 |       | V <sub>GS</sub> = 4.0V, I <sub>D</sub> = 24A <sup>④</sup>                             |
| V <sub>GS(th)</sub>                  | Gate Threshold Voltage               | 1.0  | —     | 2.0   | V     | V <sub>DS</sub> = V <sub>GS</sub> , I <sub>D</sub> = 250μA                            |
| g <sub>fs</sub>                      | Forward Transconductance             | 50   | —     | —     | S     | V <sub>DS</sub> = 25V, I <sub>D</sub> = 46A <sup>⑥</sup>                              |
| I <sub>DSS</sub>                     | Drain-to-Source Leakage Current      | —    | —     | 25    | μA    | V <sub>DS</sub> = 55V, V <sub>GS</sub> = 0V                                           |
|                                      |                                      | —    | —     | 250   |       | V <sub>DS</sub> = 44V, V <sub>GS</sub> = 0V, T <sub>J</sub> = 150°C                   |
| I <sub>GSS</sub>                     | Gate-to-Source Forward Leakage       | —    | —     | 100   | nA    | V <sub>GS</sub> = 16V                                                                 |
|                                      | Gate-to-Source Reverse Leakage       | —    | —     | -100  |       | V <sub>GS</sub> = -16V                                                                |
| Q <sub>g</sub>                       | Total Gate Charge                    | —    | —     | 98    | nC    | I <sub>D</sub> = 46A                                                                  |
| Q <sub>gs</sub>                      | Gate-to-Source Charge                | —    | —     | 19    |       | V <sub>DS</sub> = 44V                                                                 |
| Q <sub>gd</sub>                      | Gate-to-Drain ("Miller") Charge      | —    | —     | 49    |       | V <sub>GS</sub> = 5.0V, See Fig. 6 and 13 <sup>④⑤</sup>                               |
| t <sub>d(on)</sub>                   | Turn-On Delay Time                   | —    | 12    | —     | ns    | V <sub>DD</sub> = 28V                                                                 |
| t <sub>r</sub>                       | Rise Time                            | —    | 140   | —     |       | I <sub>D</sub> = 46A                                                                  |
| t <sub>d(off)</sub>                  | Turn-Off Delay Time                  | —    | 37    | —     |       | R <sub>G</sub> = 1.8Ω, V <sub>GS</sub> = 5.0V                                         |
| t <sub>f</sub>                       | Fall Time                            | —    | 78    | —     |       | R <sub>D</sub> = 0.59Ω, See Fig. 10 <sup>④⑤</sup>                                     |
| L <sub>D</sub>                       | Internal Drain Inductance            | —    | 4.5   | —     | nH    | Between lead,<br>6mm (0.25in.)<br>from package<br>and center of die contact           |
| L <sub>S</sub>                       | Internal Source Inductance           | —    | 7.5   | —     |       |  |
| C <sub>ISS</sub>                     | Input Capacitance                    | —    | 3600  | —     | pF    | V <sub>GS</sub> = 0V                                                                  |
| C <sub>OSS</sub>                     | Output Capacitance                   | —    | 870   | —     |       | V <sub>DS</sub> = 25V                                                                 |
| C <sub>rSS</sub>                     | Reverse Transfer Capacitance         | —    | 320   | —     |       | f = 1.0MHz, See Fig. 5 <sup>⑥</sup>                                                   |
| C                                    | Drain to Sink Capacitance            | —    | 12    | —     |       | f = 1.0MHz                                                                            |

## Source-Drain Ratings and Characteristics

|                 | Parameter                                           | Min. | Typ. | Max. | Units | Conditions                                                                     |
|-----------------|-----------------------------------------------------|------|------|------|-------|--------------------------------------------------------------------------------|
| I <sub>S</sub>  | Continuous Source Current<br>(Body Diode)           | —    | —    | 52   | A     | MOSFET symbol<br>showing the<br>integral reverse<br>p-n junction diode.        |
| I <sub>SM</sub> | Pulsed Source Current<br>(Body Diode) <sup>①⑥</sup> | —    | —    | 310  |       |                                                                                |
| V <sub>SD</sub> | Diode Forward Voltage                               | —    | —    | 1.3  | V     | T <sub>J</sub> = 25°C, I <sub>S</sub> = 28A, V <sub>GS</sub> = 0V <sup>④</sup> |
| t <sub>rr</sub> | Reverse Recovery Time                               | —    | 94   | 140  | ns    | T <sub>J</sub> = 25°C, I <sub>F</sub> = 46A                                    |
| Q <sub>rr</sub> | Reverse Recovery Charge                             | —    | 290  | 440  | nC    | di/dt = 100A/μs <sup>④⑤</sup>                                                  |

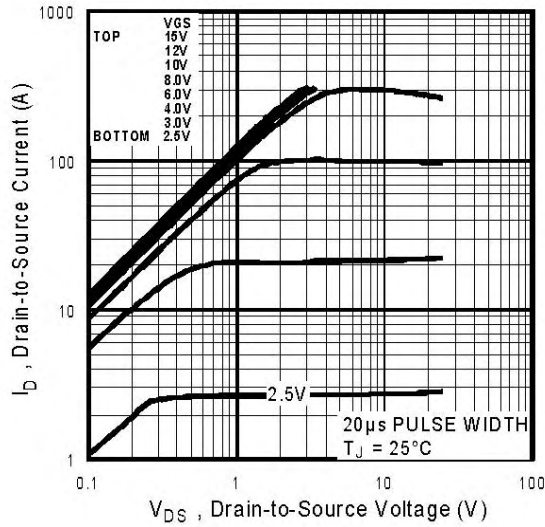
### Notes:

- ① Repetitive rating; pulse width limited by max. junction temperature. ( See fig. 11 )  
 ② V<sub>DD</sub> = 25V, starting T<sub>J</sub> = 25°C, L = 320μH  
 R<sub>G</sub> = 25Ω, I<sub>AS</sub> = 46A. (See Figure 12)

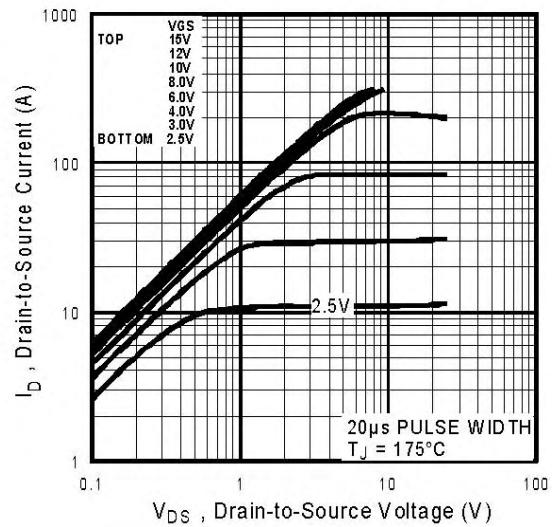
③ I<sub>SD</sub> ≤ 46A, di/dt ≤ 250A/μs, V<sub>DD</sub> ≤ V<sub>(BR)DSS</sub>,  
 T<sub>J</sub> ≤ 175°C

④ Pulse width ≤ 300μs; duty cycle ≤ 2%.

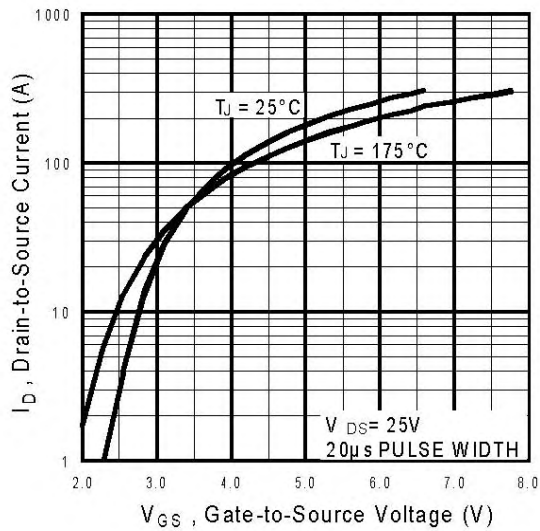
⑤ t = 60s, f = 60Hz    ⑥ Uses IRL3705N data and test conditions



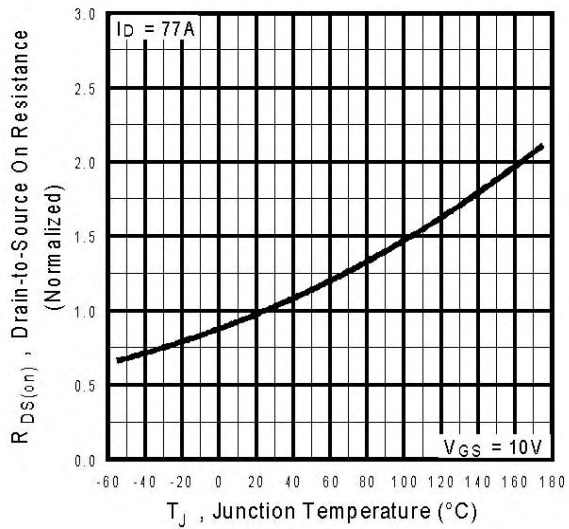
**Fig 1.** Typical Output Characteristics



**Fig 2.** Typical Output Characteristics

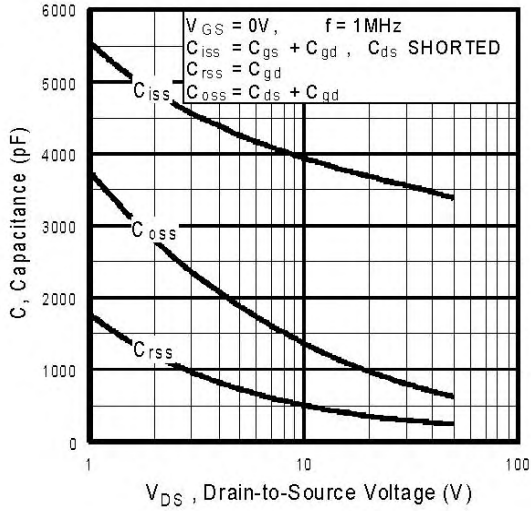


**Fig 3.** Typical Transfer Characteristics

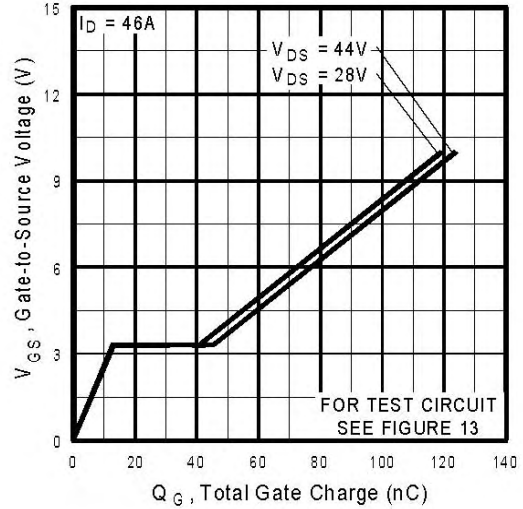


**Fig 4.** Normalized On-Resistance Vs. Temperature

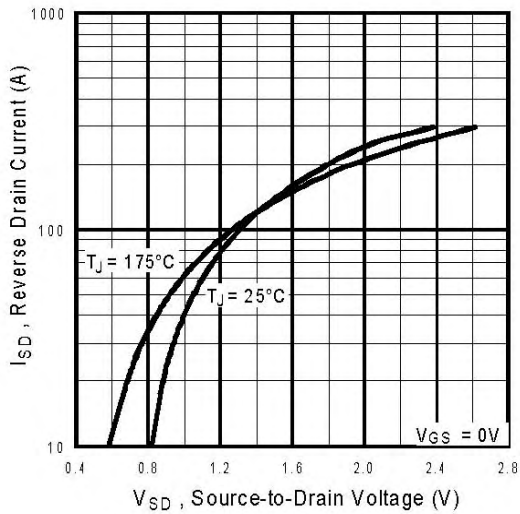
# IRLI3705NPbF



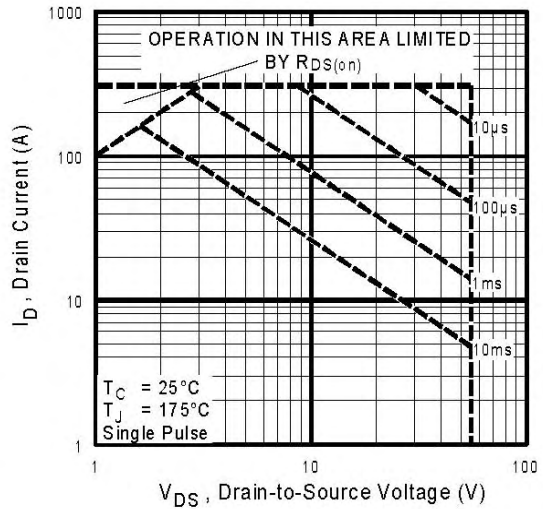
**Fig 5.** Typical Capacitance Vs. Drain-to-Source Voltage



**Fig 6.** Typical Gate Charge Vs. Gate-to-Source Voltage

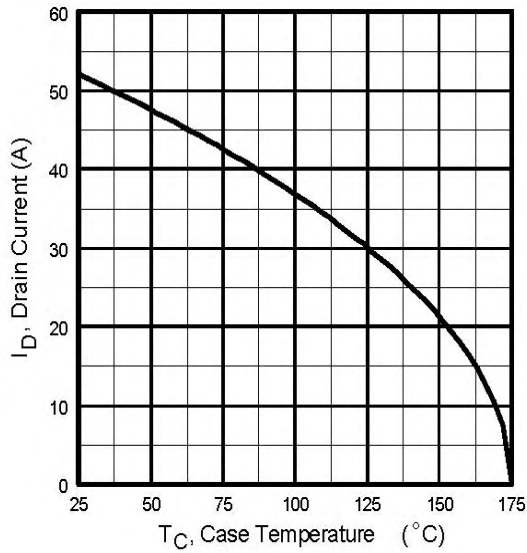


**Fig 7.** Typical Source-Drain Diode Forward Voltage

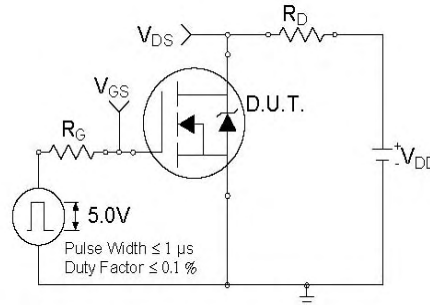


**Fig 8.** Maximum Safe Operating Area

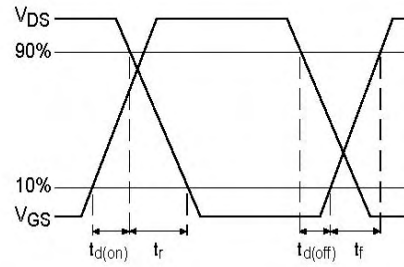




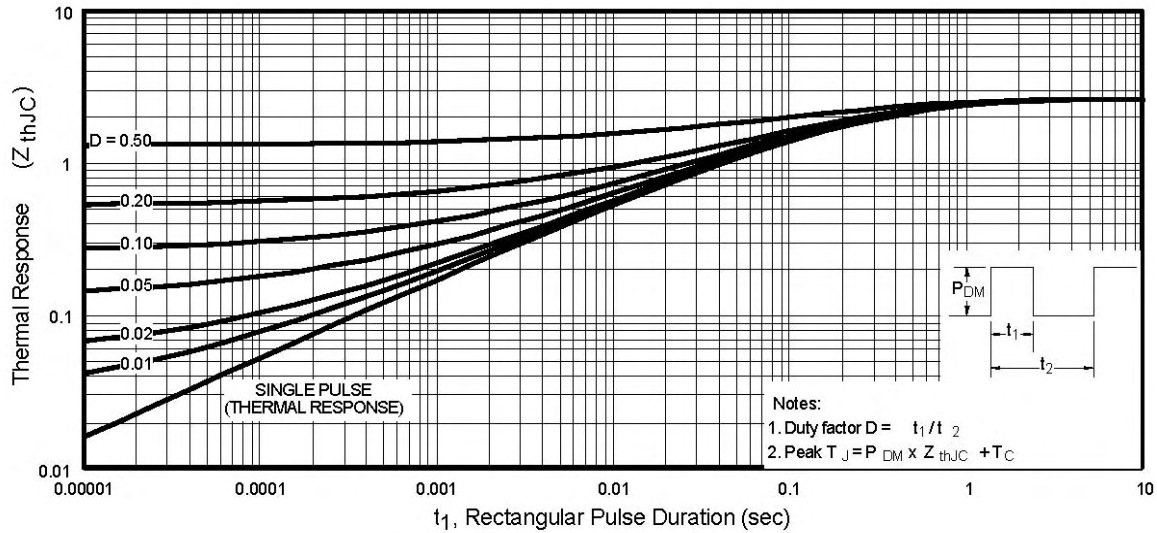
**Fig 9.** Maximum Drain Current Vs. Case Temperature



**Fig 10a.** Switching Time Test Circuit



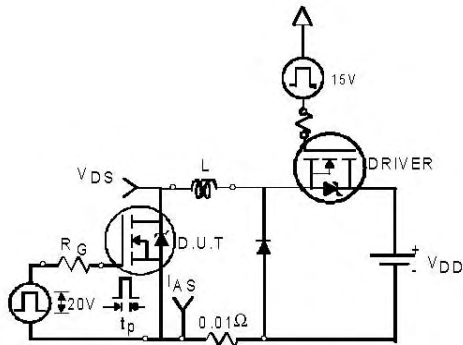
**Fig 10b.** Switching Time Waveforms



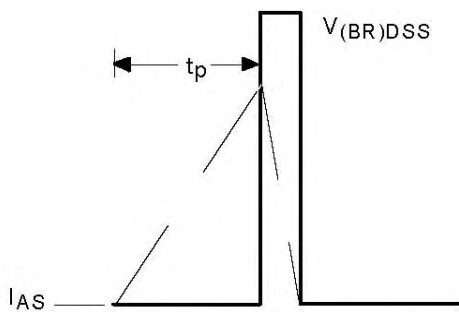
**Fig 11.** Maximum Effective Transient Thermal Impedance, Junction-to-Case

# IRLI3705NPbF

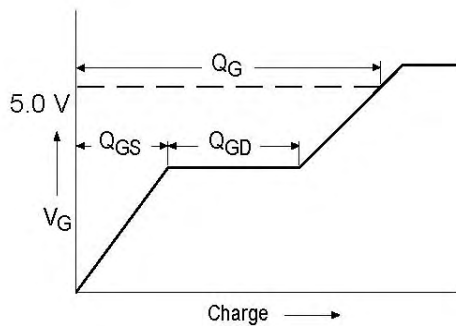
International  
**IR** Rectifier



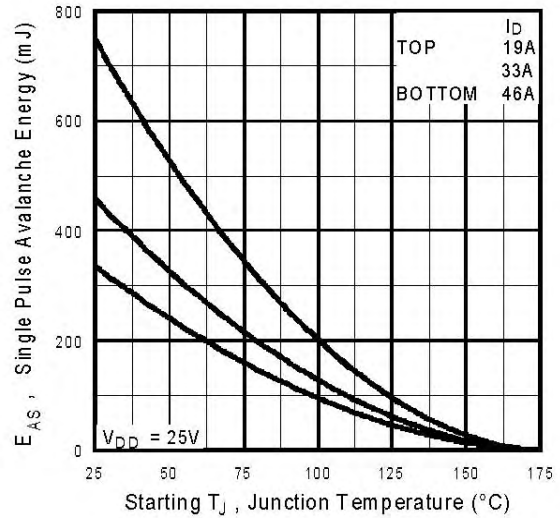
**Fig 12a.** Unclamped Inductive Test Circuit



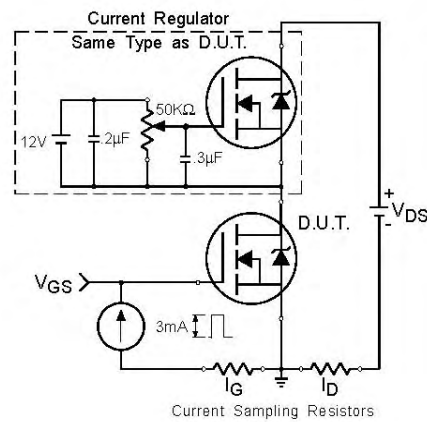
**Fig 12b.** Unclamped Inductive Waveforms



**Fig 13a.** Basic Gate Charge Waveform

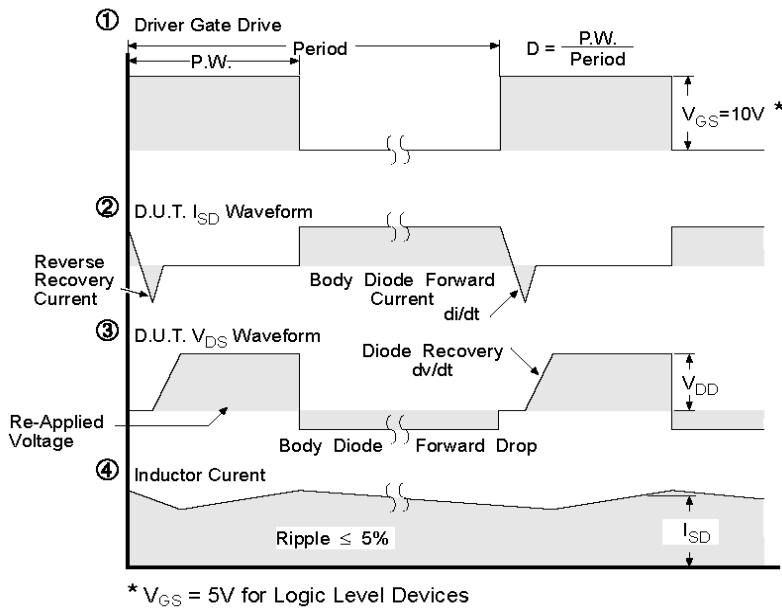
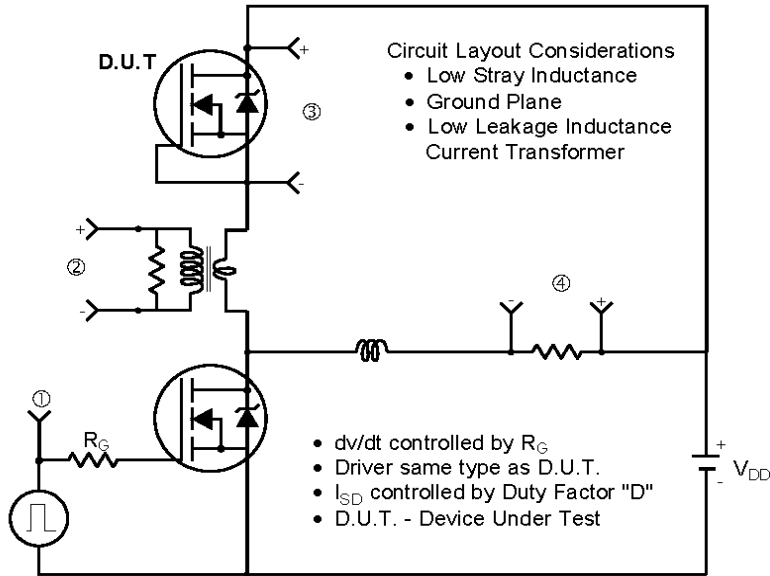


**Fig 12c.** Maximum Avalanche Energy Vs. Drain Current



**Fig 13b.** Gate Charge Test Circuit

**Peak Diode Recovery dv/dt Test Circuit**



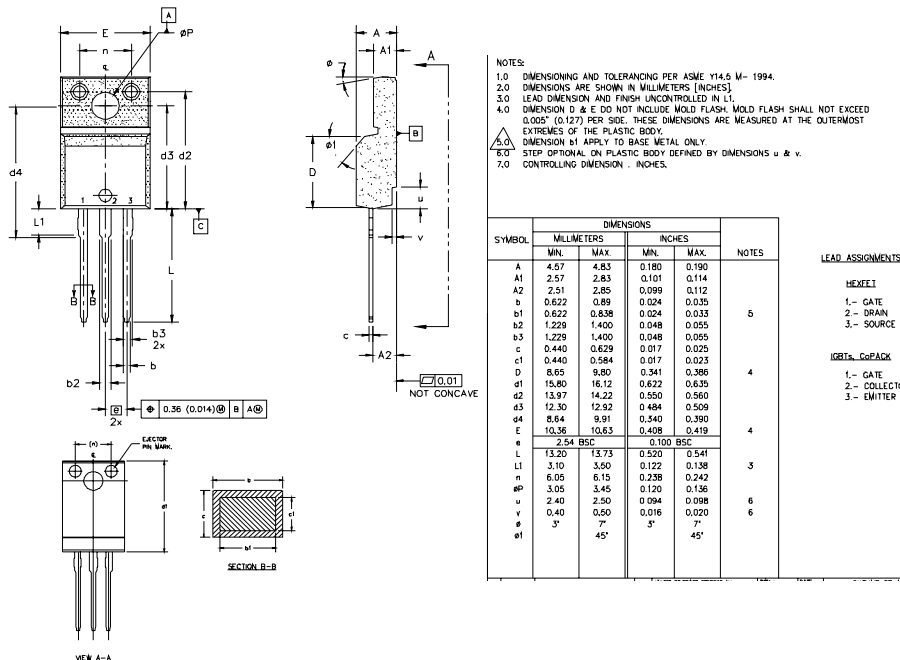
**Fig 14.** For N-Channel HEXFETS

# IRLI3705NPbF

International  
**IR** Rectifier

## TO-220 Full-Pak Package Outline

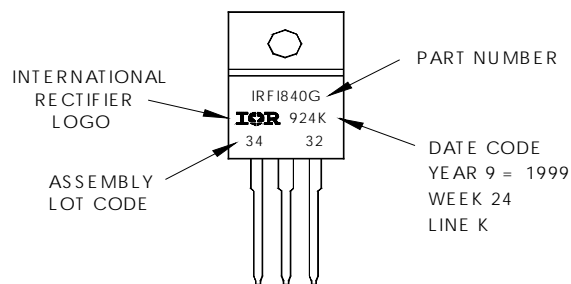
Dimensions are shown in millimeters (inches)



## TO-220 Full-Pak Part Marking Information

EXAMPLE: THIS IS AN IRF1840G  
WITH ASSEMBLY  
LOT CODE 3432  
ASSEMBLED ON WW 24 1999  
IN THE ASSEMBLY LINE "K"

**Note:** "P" in assembly line  
position indicates "Lead-Free"



Data and specifications subject to change without notice.

International  
**IR** Rectifier

IR WORLD HEADQUARTERS: 233 Kansas St., El Segundo, California 90245, USA Tel: (310) 252-7105  
TAC Fax: (310) 252-7903

Visit us at [www.irf.com](http://www.irf.com) for sales contact information. 10/04

[www.irf.com](http://www.irf.com)



Note: For the most current drawings please refer to the IR website at:  
<http://www.irf.com/package/>