

KMS Series Microminiature Side Actuated Tact Switch for SMT

Features/Benefits

- Compact size
- Excellent tactile feel
- Compatible with lead free soldering
- Grounded cover for EMC protection
- Date code marking

Typical Applications

- Mobile phones, pagers
- PDAs
- Medical handheld monitors
- Consumer electronics
- Telecommunication networks



Tactile Switches

Specification

FUNCTION: Momentary
CONTACT ARRANGEMENT: SPST, N.O.
TERMINALS: Gullwing type for SMT
IP40 Sealed

Mechanical

MAXIMUM ACTUATING FORCE: 20 N (4.4lbs.) during 25,000 cycles.
ACTUATING FORCE: 2.5 N±25%
LIFE EXPECTANCY: 100,000 operations
TRAVEL TO MAKE: 0.3 mm±0.15 mm
TOTAL TRAVEL: 0.45 mm
SHEAR FORCE RESISTANCE: 50 N

Packaging

Switches are delivered in tape and reels of 3,000 pieces. The reel diameter is 330 (12.992). The tape dimensions conform to the EIA-RS-481 and EC-286-6 norms.

NOTE: Specifications listed above are for switches with standard options.
For information on specific and custom switches, consult Customer Service Center.

Electrical

	Silver	Gold
MAXIMUM POWER:	1 VA	0.2 VA
MAXIMUM VOLTAGE:	50 VDC	50 VDC
MAXIMUM CURRENT DC:	50 mA	10 mA
MINIMUM CURRENT DC:	1 mA	1 mA

DIELECTRIC STRENGTH: 250 VDC

LIFE EXPECTANCY: 100,000 operations

CONTACT RESISTANCE: ≤100 mΩ

INSULATION RESISTANCE: 10⁹ Ω

BOUNCE TIME: ≤ 3 ms

Environmental

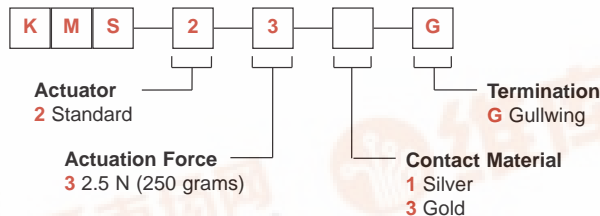
	Silver	Gold
OPERATING TEMPERATURE:	-40°C to 85°C	-40°C to 125°C
STORAGE TEMPERATURE:	-55°C to 85°C	-55°C to 125°C

Process

Compatible with infrared reflow, lead free soldering and pick and place SMT machines.

How To Order

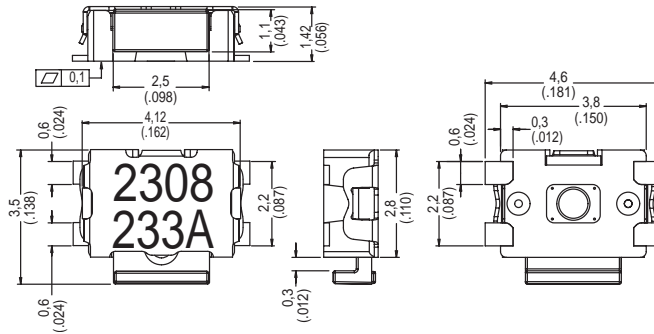
Our easy build-a-switch concept allows you to mix and match options to create the switch you need. To order, select desired option from each category and place it in the appropriate box.



KMS Series Microminiature Side Actuated Tact Switch for SMT

SERIES

KMS

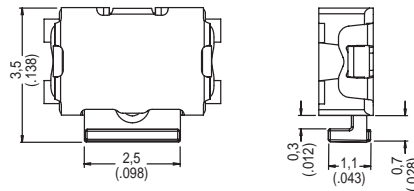


KMS231G

Each piece is date code printed:
1st Line: **2308** = Year 2002, **308** is day in the year
2nd Line: **233A** = Manufacturing code.

ACTUATOR

2 STANDARD



ACTUATION FORCE

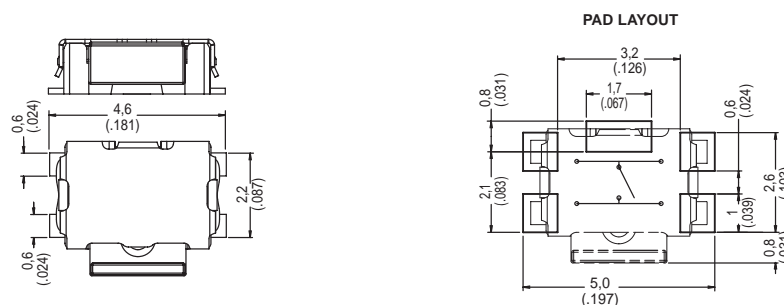
3 2.5 N (250 GRAMS)

CONTACT MATERIAL

OPTION CODE	MATERIAL
1	SILVER
3	GOLD

TERMINATION

G GULLWING



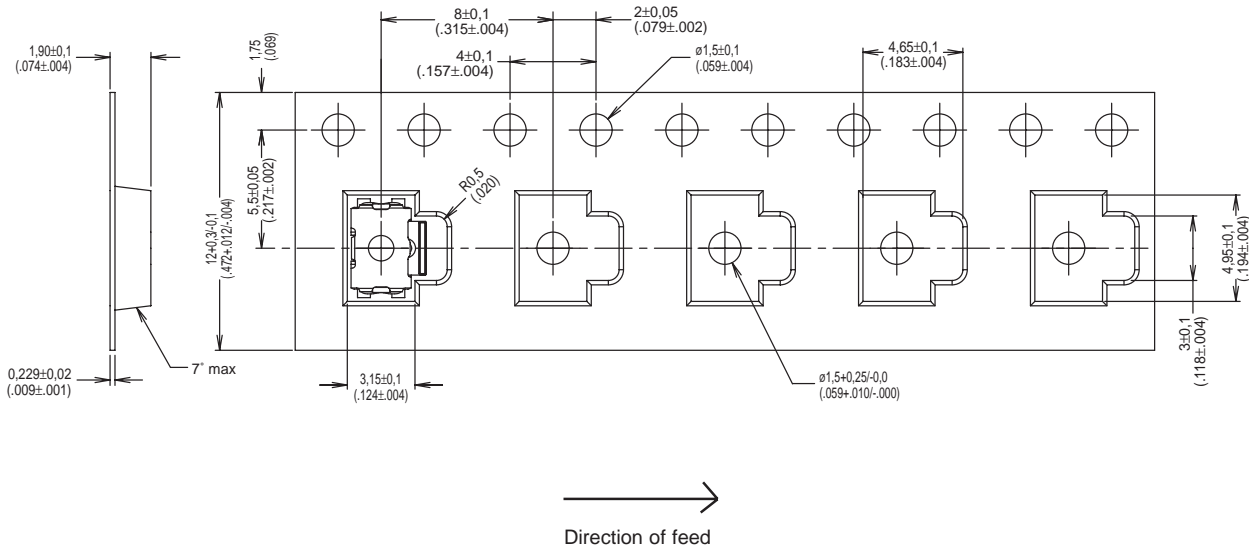
Dimensions are shown: mm (inch)
Dimensions subject to change

KMS Series Microminiature Side Actuated Tact Switch for SMT

TAPE & REEL



Tactile Switches



First Angle
Projection

Dimensions are shown: mm (inch)
Dimensions subject to change