

[查询TBA720A供应商](#)

[捷多邦，专业PCB打样工厂](#) **TBA720A**
[, 24小时加急出货](#) **TBA720AQ**

LINE OSCILLATOR CIRCUIT

This circuit has been designed for use as line-oscillator and reactance stage in colour and monochrome t.v. receivers.

The circuit consists of a Miller-integrator-oscillator followed by a pulse shaping circuit, which delivers a positive pulse of 8 V and adjustable width. The available output current is in excess of 60 mA. Finally a supply voltage take-over switch for starting purposes is built in. The TBA720A can co-operate with the TBA890.

QUICK REFERENCE DATA

Supply voltage	V_{11-16} typ.	12 V
Starting voltage	V_{9-16}	8 to 12 V

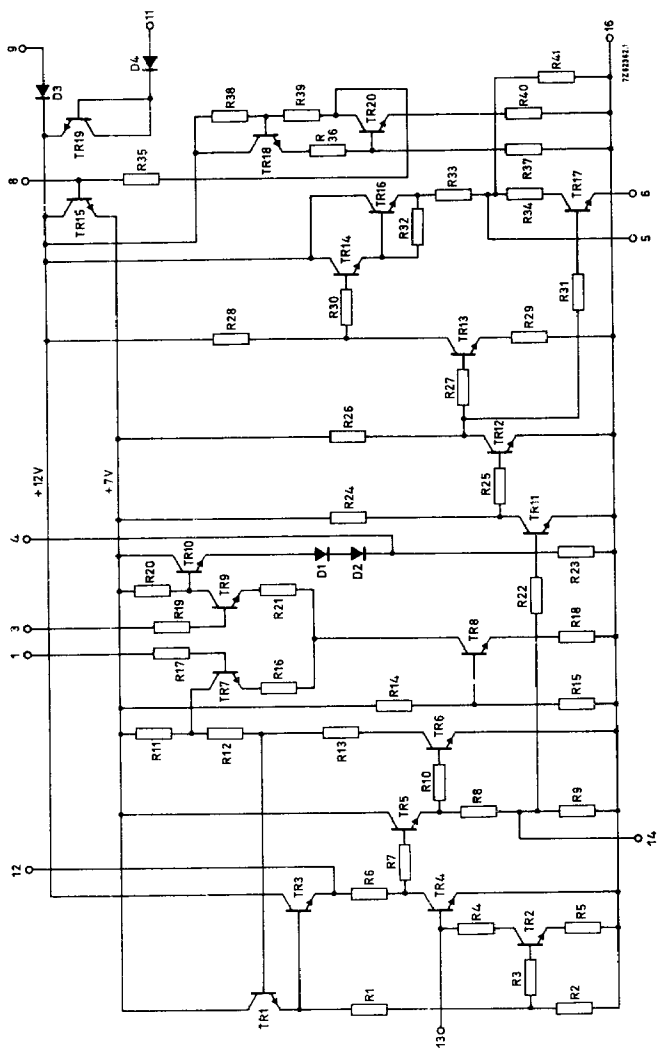
Required input signals

D.C. control voltage at pin 1	V_{1-16}	2, 4 to 5, 3 V
at pin 3	V_{3-16}	2, 4 to 5, 3 V

Delivered output signals

Output voltage at pin 5 no load; peak-to-peak value	$V_{5-16(p-p)}$ typ.	8 V
Output current at pin 5	I_5	< 60 mA

TBA720A TBA720AQ



CIRCUIT DIAGRAM



TBA720A TBA720AQ

RATINGS Limiting values in accordance with the Absolute Maximum System (IEC134).

Voltages

Supply voltage	V_{11-16}	max.	16 V
Starting voltage	V_{9-16}	max.	15 V

Currents

Output current	I_5	max.	60 mA
----------------	-------	------	-------

Power dissipation

Total power dissipation when mounted on a printed-wiring board	P_{tot}	max.	280 mW
---	-----------	------	--------

Temperatures

Storage temperature	T_{stg}	-55 to +125 °C
Operating ambient temperature	T_{amb}	0 to +60 °C

CHARACTERISTICS Measured in the test set-up on page 4

Supply voltage	V_{11-16}	typ.	12 V 10 to 13 V
Starting voltage	V_{9-16}	>	8 V 1)

CHARACTERISTICS at $T_{amb} = 25\text{ °C}$; $V_{11-16} = 12\text{ V}$

Supply current 2)	I_{11}	typ.	10,5 mA 7,5 to 13,5 mA
-------------------	----------	------	---------------------------

Required input signals

D.C. control voltage for nominal frequency at pin No. 1 and pin No. 3	$V_{1-16} = V_{3-16}$	2,4 to 5,3 V
Sensitivity of reactance stage	V_{1-3}	typ. 2 kHz/V
Duty cycle regulation at pin No. 14	I_{14}	typ. 0 μ A +400 to -400 μ A

Delivered output signals

Output voltage at pin No. 5 no load; peak-to-peak value	$V_{5-16(p-p)}$	typ. 8 V
Output current	I_5	< 60 mA
Duty cycle; without regulation	δ	{ typ. 40 % 35 to 45 %
with regulation	δ	20 to 60 %
Rise time at pin No. 5 leading edge of output pulse	t_r	typ. 200 ns

1) Maximum starting voltage should not exceed the value of the supply voltage minus 1 volt.

2) No load connected to the output. When the output is loaded, the extra current is: $\delta \times I$, in which δ = duty cycle of output pulse and I = current flowing during output pulse.

TBA720A TBA720AQ

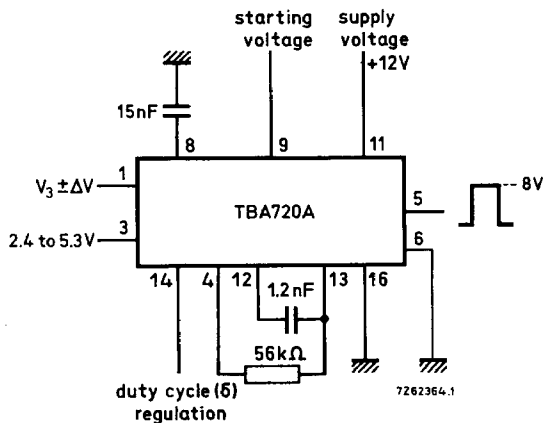
CHARACTERISTICS (continued)

Relative frequency deviation for $\Delta V_{11} = 1 \text{ V}$ 2 $\frac{\%}{^\circ\text{C}}$

Relative frequency deviation for change of
ambient temperature 25 to 55 $^\circ\text{C}$ 3 $\frac{\%}{^\circ\text{C}}$

Allowable hum-ripple on supply line
(peak-to-peak value) $\Delta V_{11-16(\text{p-p})}$ typ. 100 mV

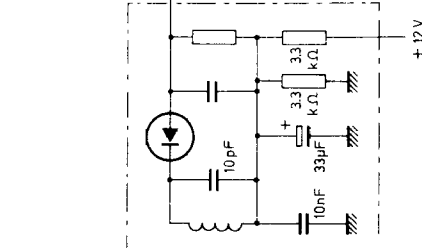
Test set-up



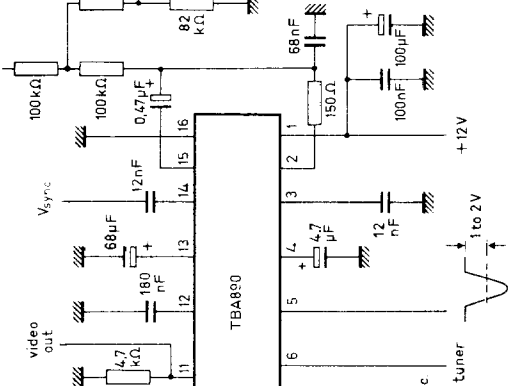
APPLICATION INFORMATION

The TBA720A with the TBA890 in a receiver with transistorized line deflection.

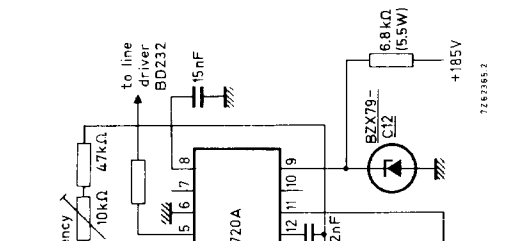
VIDEO DETECTOR



SYNCHRONISATION



LINE OSCILLATOR



TBA720A
TBA720AQ



TBA720A TBA720AQ

APPLICATION INFORMATION (continued)

Notes

1. The TBA720A is intended to drive a line deflection circuit equipped with transistors.
2. The duty cycle δ can be adjusted by connecting a resistor between pin 14 and ground or the supply.
3. The oscillation frequency can be set between 10 kHz and 25 kHz by connecting a resistor between pins 4 and 13, and a capacitor between pins 12 and 13.
4. At a nominal oscillation frequency of 15,625 kHz, the frequency deviation is limited to $\pm 1,3$ kHz to safeguard the line timebase output circuits.
5. Besides the oscillator, the TBA720A incorporates a reactance stage and a supply voltage take-over switch for starting purposes (pin 9). The latter can be used to advantage if the 12 V supply is derived from the line flyback pulse.
6. Pins 2, 7, 10 and 15 should not be connected.