

VI TELEFILTER

Filter Specification

TFS 201

1/5

Measurement condition

Ambient temperature: 23 °C
 Input power level: 0 dBm
 Termination impedances
 for input: 1080 Ω || -3,4 pF
 for output: 1080 Ω || -3,4 pF
 External coil: 130 nH

Characteristics

Remark:

Reference level for the relative attenuation a_{rel} of the TFS 201 is the minimum of the pass band attenuation a_{min} . The minimum of the pass band attenuation a_{min} is defined as the insertion loss a_e . The centre frequency f_c is the arithmetic mean value of the upper and lower frequencies at the 3 dB filter attenuation level relative to the insertion loss a_e . The nominal frequency f_N is fixed on 201,0 MHz without tolerance. The given values for the relative attenuation a_{rel} and for the group delay ripple have to be reached at the frequencies given below also if the centre frequency f_c is shifted due to the temperature coefficient of frequency TC_f in the operating temperature range and due to a production tolerance for the centre frequency f_c .

D a t a	typ. value	tolerance / limit
Insertion loss (Reference level)	$a_e = a_{min}$	- max 7,0 dB
Centre frequency	f_c	201,0 MHz -
Norminale frequency	f_N	- 201,0 MHz
Relative attenuation	a_{rel}	
$f_N \pm \dots f_N \pm 100$ kHz		- min. 2 dB
$f_N \pm 400$ kHz ... $f_N \pm 600$ kHz		- min. 18 dB
$f_N \pm 600$ kHz ... $f_N \pm 800$ kHz		- min. 31 dB
$f_N \pm 800$ kHz ... $f_N \pm 10$ MHz		- min. 34 dB
Group delay distortion	GDD	
201,0 MHz \pm 70 kHz		- max 0,8 μ s
Operating temperature range		- 10 °C ... + 85 °C
Storage temperature range		- 25 °C ... + 85 °C
Temperature coefficient of frequency	TC	ca. - 0,036 ppm/K ²
Frequency inversion temperature		+ 25 °C

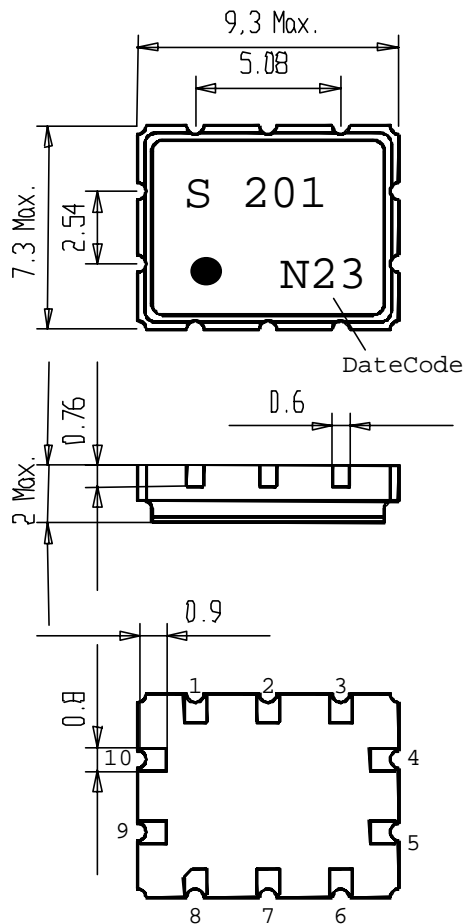
generated: _____

checked / approved: _____



VI TELEFILTER**Filter Specification****TFS 201****2/5****Construction, pin configuration and 50 Ω - matching network**

(All dimensions in mm)



Datecode: Year+week

L 1999

M 2000

N 2001

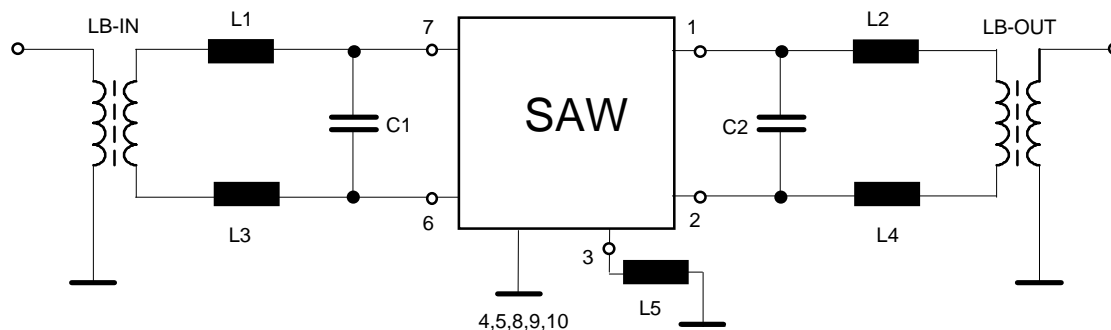
...

Pin 1,2: symmetrical output

Pin 6,7: symmetrical input

Pin 3: external coil

Pin 4,5,8,9,10 ground

50 Ohm Test circuit

VI TELEFILTER**Filter Specification****TFS 201****4/5****Air reflow temperature conditions**

1st and 2nd air reflow profile

Name:	pre-heating periods	main-heating periods	peak temperature
Temperature:	150 °C - 170 °C	over 200 °C	255 °C ± 5 °C
Time:	60 sec. - 90 sec.	20 sec. - 25 sec.	

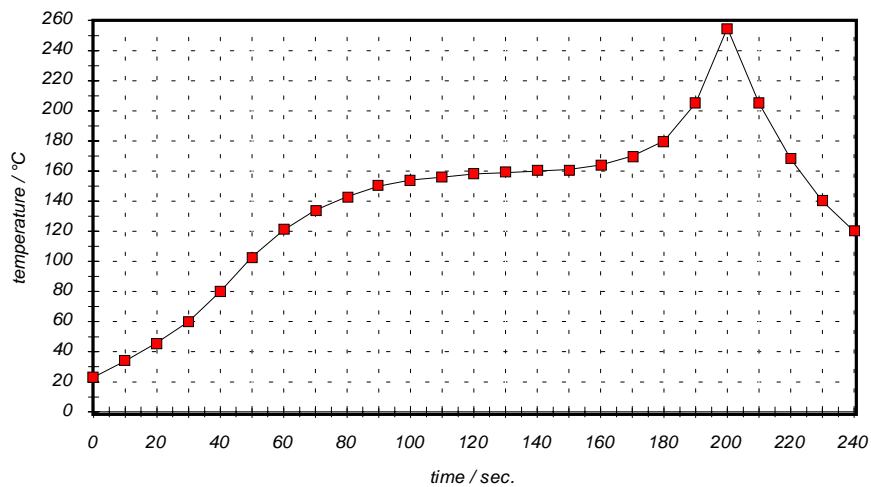
Chip-mount air reflow profile

Table for temperature vs. time during the air reflow process

Tolerance of temperatures: ± 5 °C

time / sec.	temperature / °C	time / sec.	temperature / °C
0	23	140	160
10	34	150	161
20	46	160	164
30	60	170	170
40	80	180	180
50	103	190	205
60	121	195	230
70	134	200	255
80	143	205	230
90	150	210	205
100	154	215	180
110	156	220	165
120	158	230	140
130	159	240	120

VI TELEFILTER**Filter Specification****TFS 201****5/5****History**

Version	Reason of Changes	Name	Date
1.3	Add value for coupling coil. Add history. Change date code from month to week. Correct tape and reel information. Correct matching network configuration.	Dr. Wall	05.06.2001