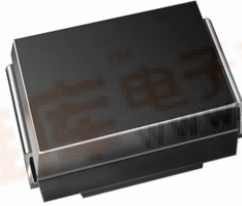




USB260

Vishay General Semiconductor

Surface Mount Ultrafast Plastic Rectifier



DO-214AA (SMB)

FEATURES

- Glass passivated chip junction
- Ideal for automated placement
- Ultrafast recovery times for high efficiency
- Low forward voltage, low power losses
- High forward surge capability
- Meets MSL level 1, per J-STD-020, LF maximum peak of 260 °C
- Solder dip 260 °C, 40 s
- Component in accordance to RoHS 2002/95/EC and WEE 2002/96/EC



RoHS COMPLIANT

TYPICAL APPLICATIONS

For use in high frequency rectification and freewheeling application in switching mode converters and inverters for consumer, computer, automotive and telecommunication.

MECHANICAL DATA

Case: DO-214AA (SMB)

Epoxy meets UL 94V-0 flammability rating

Terminals: Matte tin plated leads, solderable per J-STD-002 and JESD22-B102

E3 suffix for consumer grade, meets JESD 201 class 1A whisker test, HE3 suffix for high reliability grade (AEC Q101 qualified), meets JESD 201 class 2 whisker test

Polarity: Color band denotes cathode end

PRIMARY CHARACTERISTICS

$I_{F(AV)}$	2.0 A
V_{RRM}	600 V
I_{FSM}	90 A
t_{rr}	30 ns
V_F	1.0 V
$T_J \text{ max.}$	150 °C

MAXIMUM RATINGS ($T_A = 25 \text{ °C}$ unless otherwise noted)

PARAMETERS	SYMBOL	USB260	UNIT
Device marking code		U60	
Maximum repetitive peak reverse voltage	V_{RRM}	600	V
Maximum RMS voltage	V_{RMS}	420	V
Maximum DC blocking voltage	V_{DC}	600	V
Maximum average forward rectified current (Fig. 1)	$I_{F(AV)}$	2.0	A
Peak forward surge current 8.3 ms single half sine-wave superimposed on rated load	I_{FSM}	90	A
Non-repetitive avalanche energy at $I_{AS} = 2.0 \text{ A}$, $L = 10 \text{ mH}$, $T_J = 25 \text{ °C}$	E_{AS}	20	mJ
Operating junction and storage temperature range	T_J, T_{STG}	- 55 to + 150	°C





ELECTRICAL CHARACTERISTICS ($T_A = 25\text{ }^\circ\text{C}$ unless otherwise noted)						
PARAMETERS	TEST CONDITIONS		SYMBOL	TYP.	MAX.	UNIT
Breakdown voltage	$I_R = 10\ \mu\text{A}$	$T_J = 25\text{ }^\circ\text{C}$	V_{BR}	600 (minimum)		V
Instantaneous forward voltage ⁽¹⁾	$I_F = 1\ \text{A}$	$T_J = 25\text{ }^\circ\text{C}$	V_F	1.25	-	V
	$I_F = 2.0\ \text{A}$	$T_J = 25\text{ }^\circ\text{C}$ $T_J = 125\text{ }^\circ\text{C}$		1.5 1.0	1.6 1.1	
Maximum reverse current ⁽²⁾	$V_R = 600\ \text{V}$	$T_J = 25\text{ }^\circ\text{C}$ $T_J = 125\text{ }^\circ\text{C}$		- 30	5.0 100	μA
Maximum reverse recovery time	$I_F = 0.5\ \text{A}, I_R = 1.0\ \text{A}, I_{rr} = 0.25\ \text{A}$		t_{rr}	30		ns
Typical junction capacitance	4.0 V, 1 MHz		C_J	45		pF

Notes:

(1) Pulse test: 300 μs pulse width, 1 % duty cycle

(2) Pulse test: Pulse width $\leq 40\ \text{ms}$

THERMAL CHARACTERISTICS ($T_A = 25\text{ }^\circ\text{C}$ unless otherwise noted)			
PARAMETERS	SYMBOL	USB260	UNIT
Typical thermal resistance ⁽¹⁾	$R_{\theta JA}$	45	$^\circ\text{C/W}$
	$R_{\theta JL}$	10	

Note:

(1) Units mounted on P.C.B. with 2.0 x 2.0" copper pad areas

ORDERING INFORMATION (Example)				
PREFERRED P/N	UNIT WEIGHT (g)	PREFERRED PACKAGE CODE	BASE QUANTITY	DELIVERY MODE
USB260-E3/52T	0.096	52T	750	7" diameter plastic tape and reel
USB260-E3/5BT	0.096	5BT	3200	13" diameter plastic tape and reel
USB260HE3/52T ⁽¹⁾	0.096	52T	750	7" diameter plastic tape and reel
USB260HE3/5BT ⁽¹⁾	0.096	5BT	3200	13" diameter plastic tape and reel

Note:

(1) Automotive grade AEC Q101 qualified

RATINGS AND CHARACTERISTICS CURVES

($T_A = 25\text{ }^\circ\text{C}$ unless otherwise noted)

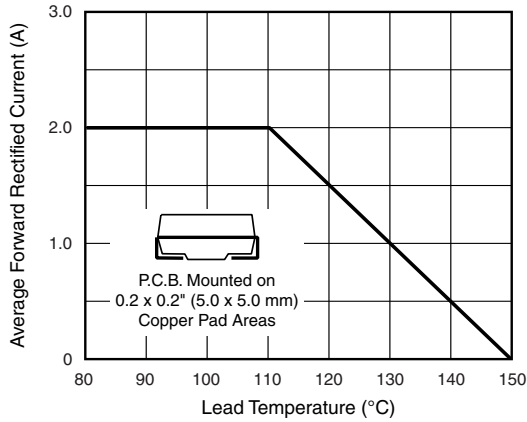


Figure 1. Maximum Forward Current Derating Curve

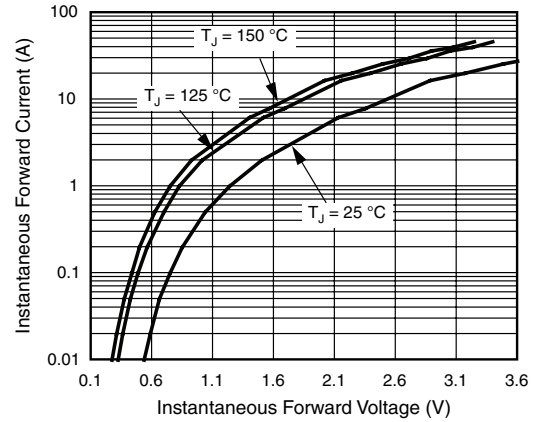


Figure 4. Typical Instantaneous Forward Characteristics

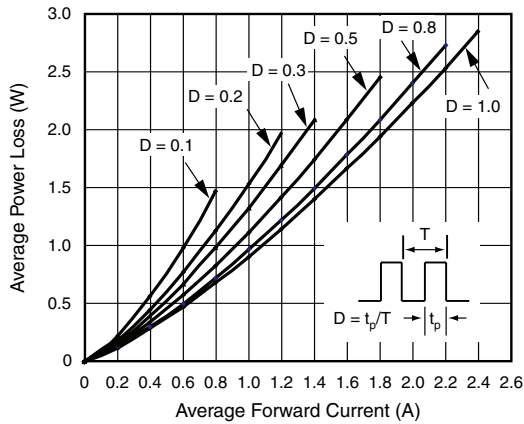


Figure 2. Forward Power Loss Characteristics

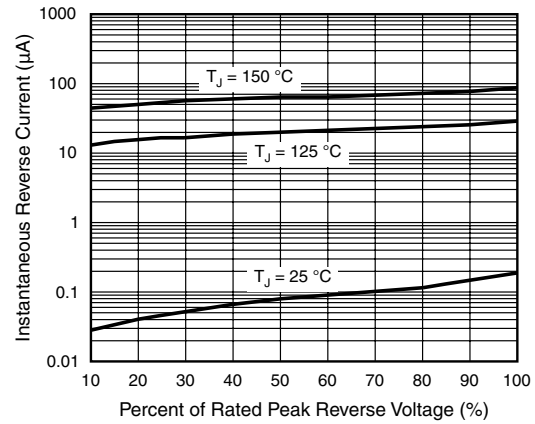


Figure 5. Typical Reverse Leakage Characteristics

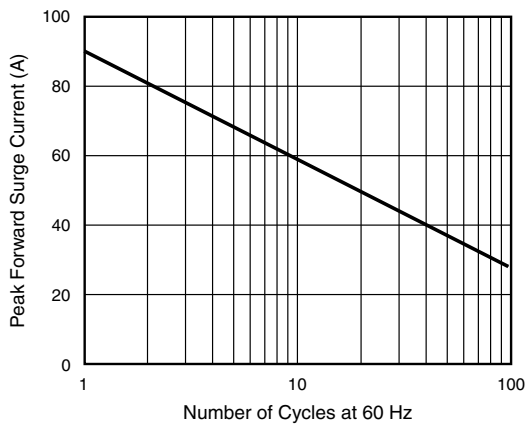


Figure 3. Maximum Non-Repetitive Peak Forward Surge Current

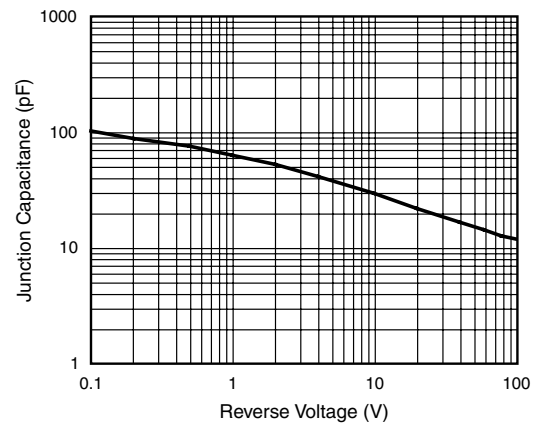


Figure 6. Typical Junction Capacitance

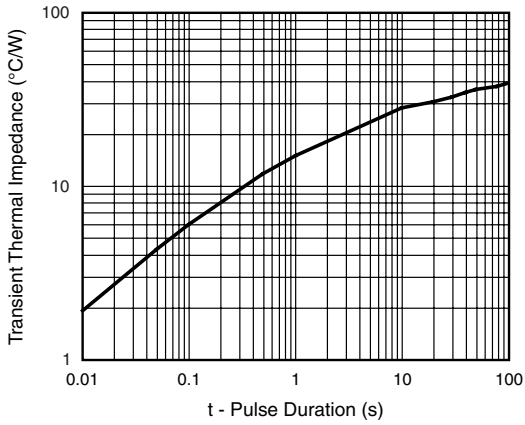
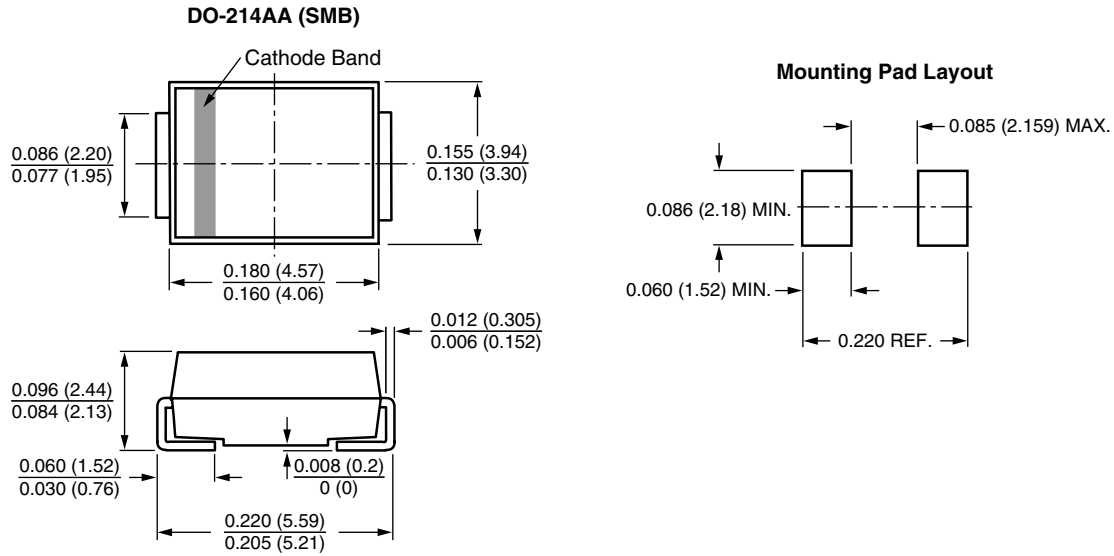


Figure 7. Typical Transient Thermal Impedance

PACKAGE OUTLINE DIMENSIONS in inches (millimeters)





Disclaimer

All product specifications and data are subject to change without notice.

Vishay Intertechnology, Inc., its affiliates, agents, and employees, and all persons acting on its or their behalf (collectively, "Vishay"), disclaim any and all liability for any errors, inaccuracies or incompleteness contained herein or in any other disclosure relating to any product.

Vishay disclaims any and all liability arising out of the use or application of any product described herein or of any information provided herein to the maximum extent permitted by law. The product specifications do not expand or otherwise modify Vishay's terms and conditions of purchase, including but not limited to the warranty expressed therein, which apply to these products.

No license, express or implied, by estoppel or otherwise, to any intellectual property rights is granted by this document or by any conduct of Vishay.

The products shown herein are not designed for use in medical, life-saving, or life-sustaining applications unless otherwise expressly indicated. Customers using or selling Vishay products not expressly indicated for use in such applications do so entirely at their own risk and agree to fully indemnify Vishay for any damages arising or resulting from such use or sale. Please contact authorized Vishay personnel to obtain written terms and conditions regarding products designed for such applications.

Product names and markings noted herein may be trademarks of their respective owners.