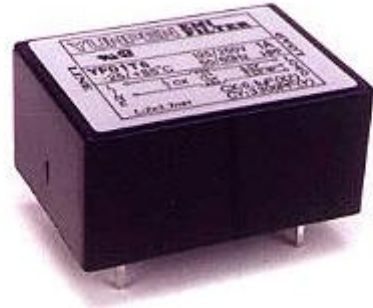


# YUNPEN USA

## YF-T8 SERIES

### 1. FEATURES

- Low cost type
- Printed circuit terminals
- All parts are approved by **UL, VDE and CSA**



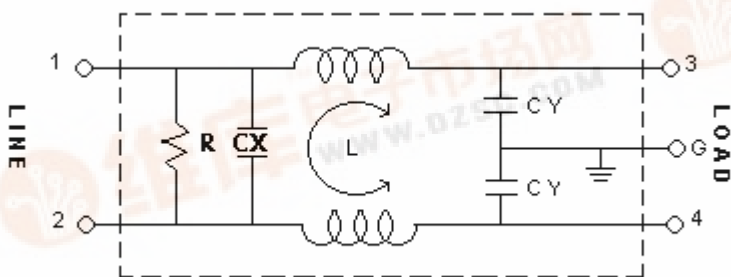
### 2. SPECIFICATIONS

ITEM \ MODEL		YF01T8	YF03T8	YF06T8	YF10T8
RATED VOLTAGE		250V AC	250V AC	250V AC	250V AC
RATED CURRENT		1A	3A	6A	10A
LEAK CURRENT		0.8mA MAX 250V,50HZ	0.8mA MAX 250V,50HZ	0.8mA MAX 250V,50HZ	0.8mA MAX 250V,50HZ
TEST VOLTAGE	LINE TO LINE	1450V DC	1450V DC	1450V DC	1450V DC
	LINE TO GROUND	2250V DC	2250V DC	2250V DC	2250V DC
INSULATION RESISTANCE		100M ohm MIN 250VDC	100M ohm MIN 250VDC	100M ohm MIN 250VDC	100M ohm MIN 250VDC
DIRECT CURRENT RESISTANCE		0.5 ohm MAX	0.2 ohm MAX	0.15 ohm MAX	0.1 ohm MAX
TEMPERATURE RISE		30C MAX	30C MAX	30C MAX	30C MAX
OPERATING TEMPERATURE		-25 ~ +85C	-25 ~ +85C	-25 ~ +85C	-25 ~ +85C
ATTENUATION	NORMAL MODE 25dbMIN	0.50 ~ 50MHZ	0.70 ~ 40MHZ	1.00 ~ 50MHZ	1.50 ~ 50MHZ
	COMMON MODE 25dbMIN	0.10 ~ 50MHZ	0.20 ~ 35MHZ	0.70 ~ 50MHZ	1.50 ~ 50MHZ
CX		0.1uF	0.1uF	0.1uF	0.1uF
CY		3300pF*2	3300pF*2	3300pF*2	3300pF*2
INDUCTANCE		3.7mH*2	1.8mH*2	0.7mH*2	0.3mH*2
RESISTANCE		1.5MOHM	1.5MOHM	1.5MOHM	1.5MOHM

### 3. NOISE ATTENUATION (dB)

COMMON MODE (LINE TO GROUND) IN 50 OHM SYSTEM							
TYPE	CURRENT RATING	FREQUENCY-MHZ					
		0.15	0.5	1.0	5.0	10.0	30.0
YF01T6	1A	26	39	43	44	50	26
YF03T6	3A	20	32	36	35	26	18
YF06T6	6A	12	20	25	38	44	39
YF10T6	10A	6	15	21	34	41	35
DIFFERENTIAL MODE (LINE TO LINE) IN 50 OHM SYSTEM							
YF01T6	1A	8	19	27	44	45	22
YF03T6	3A	7	17	23	37	38	18
YF06T6	6A	6	16	21	45	46	37
YF10T6	10A	4	13	20	43	46	35

### 4. CIRCUIT



### 5. DIMENSION(mm)

YF01T8~YF10T8

