

Coaxial

Frequency Mixer

ZX05-30W+ ZX05-30W

Level 7 (LO Power +7 dBm) 300 to 4000



CASE STYLE: FL905

Maximum Ratings

Operating Temperature	-40°C to 85°C
Storage Temperature	-55°C to 100°C
RF Power	50mW
IF Current	40mA

Coaxial Connections

LO	1
RF	2
IF	3

Features

- rugged construction
- small size
- low conversion loss
- high L-R isolation
- protected by US Patents 6,133,525 & 6,790,049

Applications

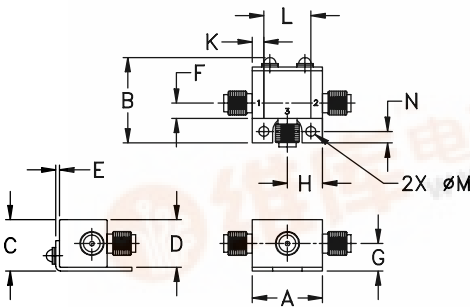
- cellular
- PCS
- instrumentation
- satellite communication

Connectors	Model	Price	Qty.
SMA	ZX05-30W-S(+)	\$37.95 ea.	(1-24)

+ RoHS compliant in accordance with EU Directive (2002/95/EC)

The + suffix identifies RoHS Compliance. See our web site for RoHS Compliance methodologies and qualifications.

Outline Drawing



Outline Dimensions (inch/mm)

A	B	C	D	E	F	G
.74	.90	.54	.50	.04	.16	.29
18.80	22.86	13.72	12.70	1.02	4.06	7.37

H	J	K	L	M	N	wt
.37	--	.122	.496	.106	.122	grams
9.40	--	3.10	12.60	2.69	3.10	20.0

Electrical Specifications (T_{AMB}=25°C)

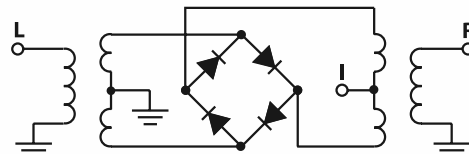
FREQUENCY (MHz)	CONVERSION LOSS (dB)	LO-RF ISOLATION (dB)		LO-IF ISOLATION (dB)		IP3 at center band (dBm)				
		Typ.	Min.	Typ.	Min.					
300-4000	DC-950	6.8	0.2	9.0	9.8	35	17	16	7	12

1 dB COMP: +1 dBm typ.
m= mid band [2f_l to f_u/2]

Typical Performance Data

Frequency (MHz)		Conversion Loss (dB)	Isolation L-R (dB)	Isolation L-I (dB)	VSWR RF Port (:1)	VSWR LO Port (:1)
RF	LO	LO +7dBm	LO +7dBm	LO +7dBm	LO +7dBm	LO +7dBm
300.10	330.10	5.34	45.30	34.86	2.04	5.44
450.10	480.10	4.98	41.41	32.02	1.54	3.61
600.10	630.10	5.02	39.35	28.89	1.73	3.17
781.35	751.35	5.11	37.95	28.09	2.81	2.51
943.85	913.85	6.22	37.02	28.05	3.48	1.97
1106.35	1076.35	6.36	39.38	23.65	2.77	1.70
1268.85	1238.85	6.45	42.76	20.82	2.59	1.80
1431.35	1401.35	5.84	40.76	18.75	3.06	2.17
1675.10	1645.10	7.37	37.69	16.07	1.89	2.72
1837.60	1807.60	7.03	37.60	14.80	2.87	3.10
2000.10	1970.10	7.54	37.84	13.54	3.39	3.13
2211.87	2181.87	7.80	37.90	12.47	3.19	3.29
2435.39	2405.39	7.94	38.15	11.59	3.90	3.27
2658.92	2628.92	7.71	39.90	10.55	4.70	3.21
2882.45	2852.45	7.49	44.86	9.56	4.72	2.76
3105.98	3075.98	6.88	38.93	10.01	4.06	1.96
3329.51	3299.51	6.50	39.01	11.39	2.83	1.89
3553.04	3523.04	6.26	41.76	14.66	2.41	2.39
3776.57	3746.57	6.25	38.02	19.20	1.48	3.74
4000.10	3970.10	6.55	34.99	25.24	1.19	5.27

Electrical Schematic



ZX05-30W+ ZX05-30W

Performance Charts

