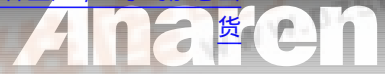


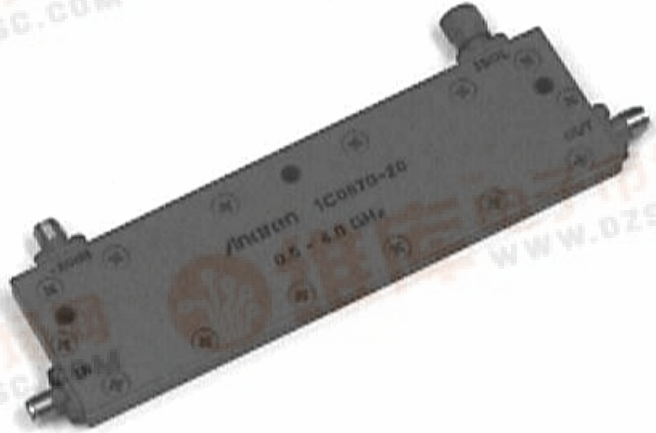
Model 1C0870-20



Directional Couplers "In-Line" Style

Applications

- Subassemblies
- Lab Systems
- Leveling Loops
- Power Monitoring
- Test and Calibration



Features

- Military Grade
- 0.5 - 4.0 GHz
- "In-Line" Configuration
- Connectors Per MIL-C-39012
- Rugged Aluminum Housing
- Built in Termination

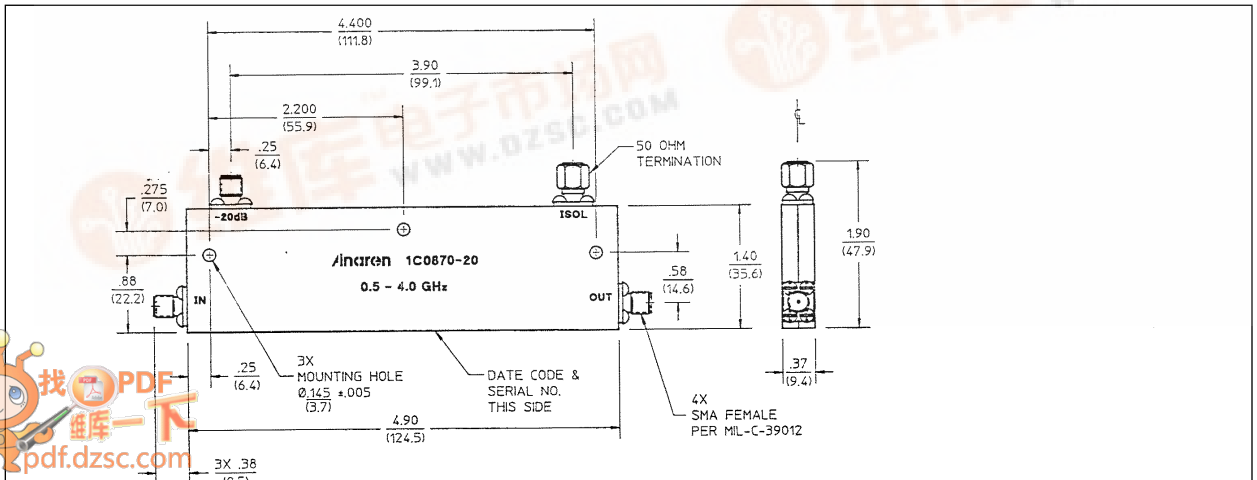
Electrical Specifications

Model#	Frequency GHz	Coupling dB Mean	Insert. Loss dB Max	Input VSWR Max:1
1C0870-20	0.5 - 4.0	20.0 ± 1.5	0.50	1.30

Model #	Freq. Sems. dB Max	Directivity dB Min/Typ	Max CW Power* Forward	Backward
1C0870-20	±1.5	17/20	100	50

Notes: Electrical and Mechanical Specifications subject to change without notice. Impedance: 50 ohms nominal. Meets MIL-E-5400 Class 3 requirements. Additional screening available for military and space applications. *These power ratings apply when coupled port VSWR is 2.0:1 or less. Higher power can be handled with a lower VSWR termination. In general the Max CW Power is identical to 3 dB couplers when there is no internal termination or one supplied by Anaren. All models have SMA connectors.

Outline Drawing



Aluminum Cased Connectorized Components

