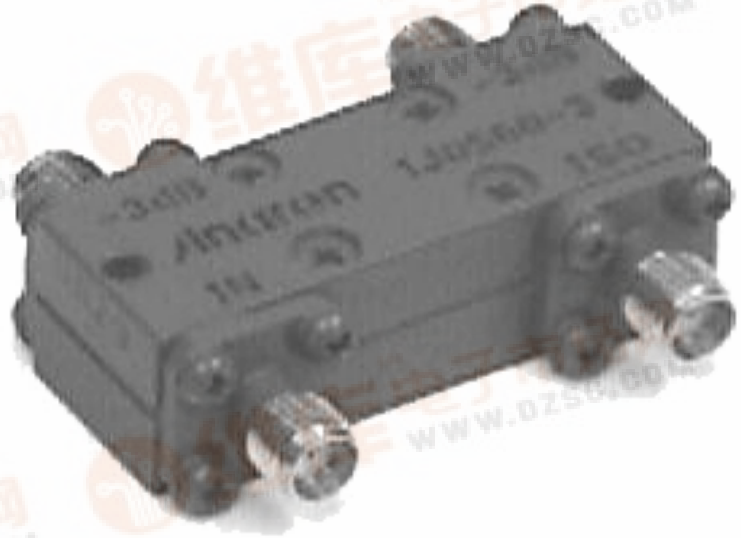


**Hybrid Couplers**  
**3 dB, 90°**



**Applications**

- Balanced Mixers
- Antenna Feed Networks
- Phasing Networks
- Dividers/Combiners

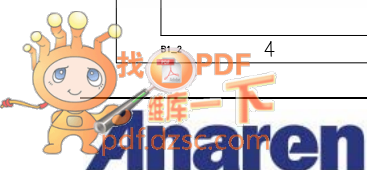
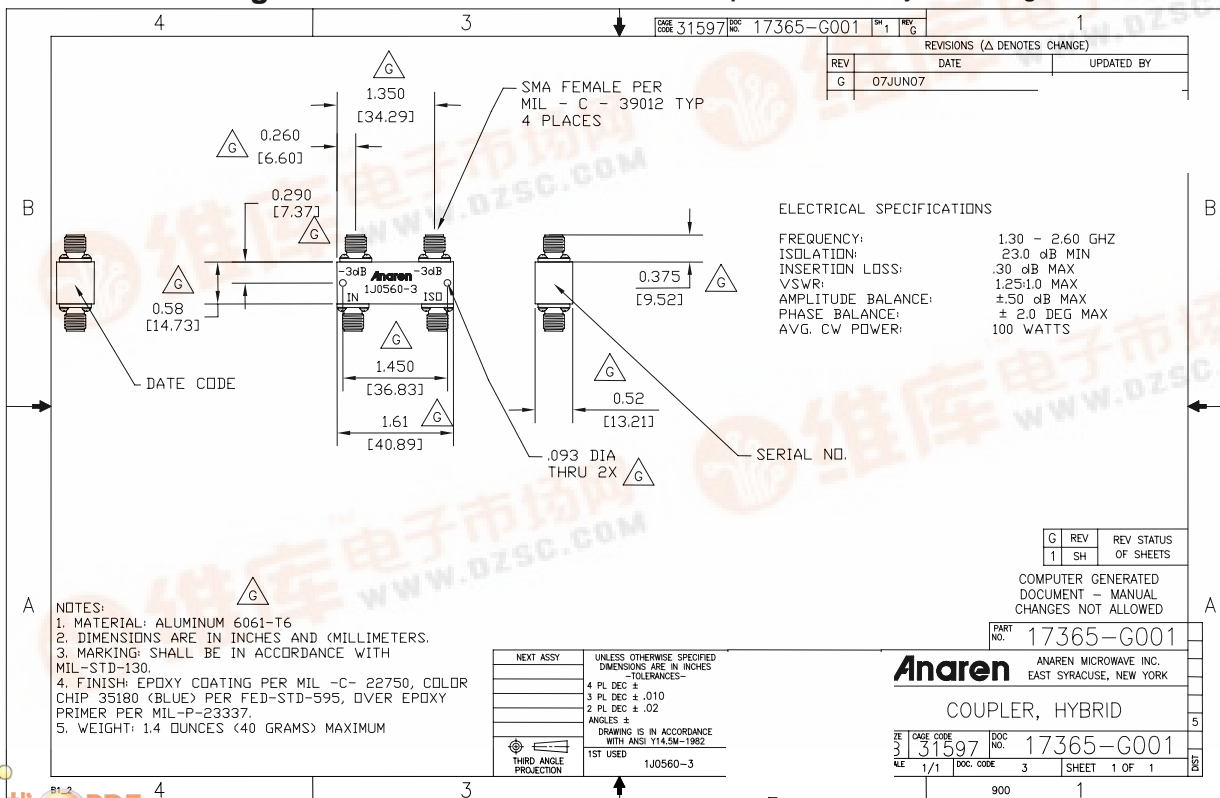
**Features**

- Military Grade
- 1.3 – 2.6 GHz
- 2-Way power Split
- Quadrature
- Connectors Per MIL-C-39012
- Rugged Aluminum Housing
- Low VSWR
- Meets MIL-E-5400 Class 3 Requirements

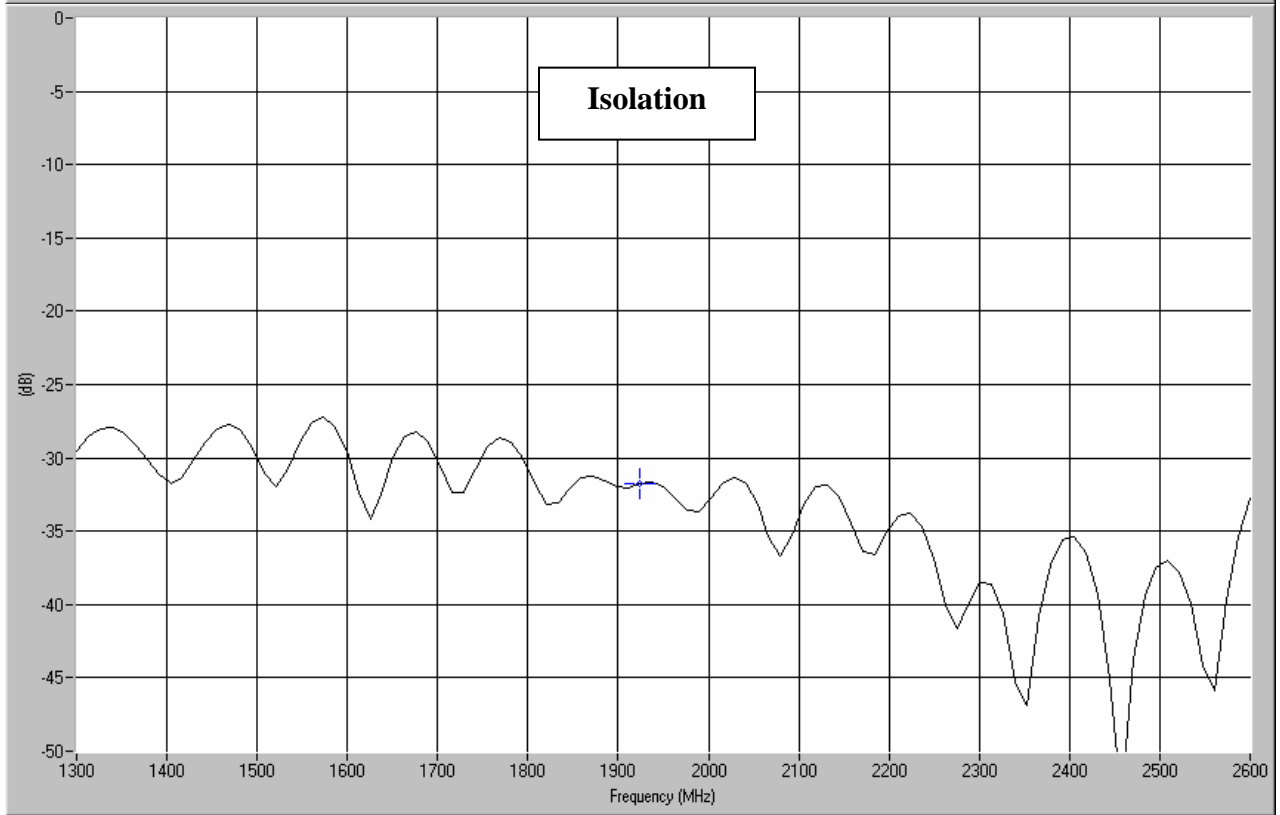
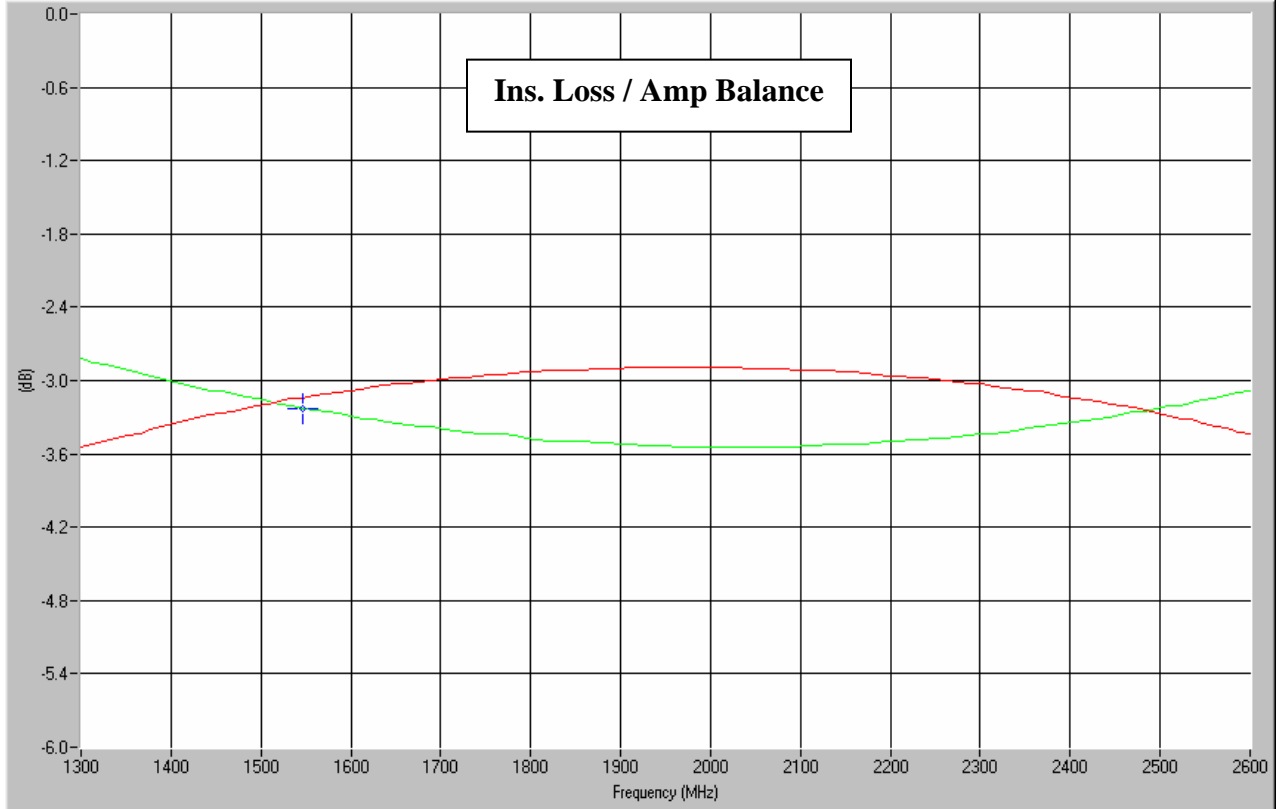
Aluminum Cased Connectorized Components

**Outline Drawing**

Electrical and Mechanical Specifications subject to change without notice.



Typical Test Data Plots



### Typical Test Data Plots

