

Hybrid Couplers
3 dB, 90°

Applications

- Microstrip Circuits
- Dividers/Combiners
- Switch Networks
- Balanced Detectors
- Antenna Feeds

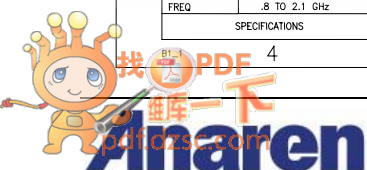
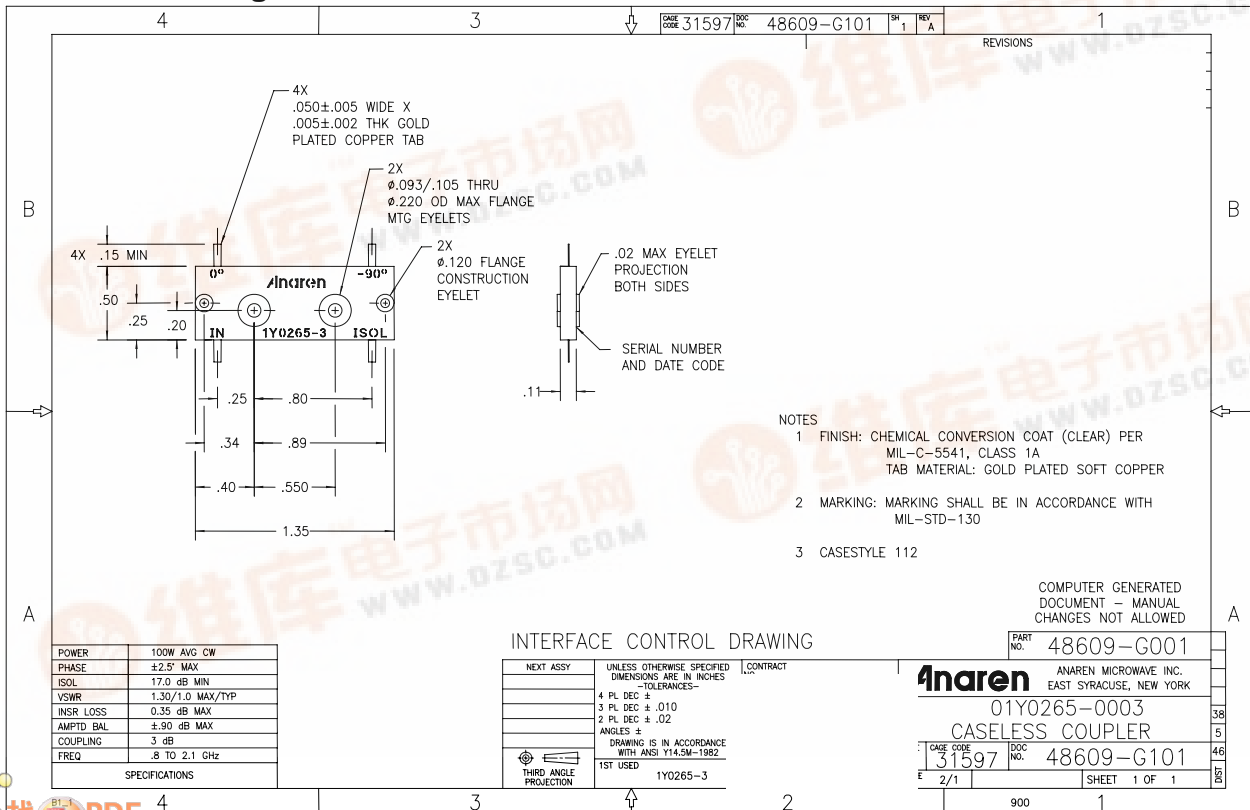
Features

- 0.8 – 2.1 GHz
- Welded Tab mount
- Reliable Performance
- Meets MIL-E-5400 Class 3 Requirements



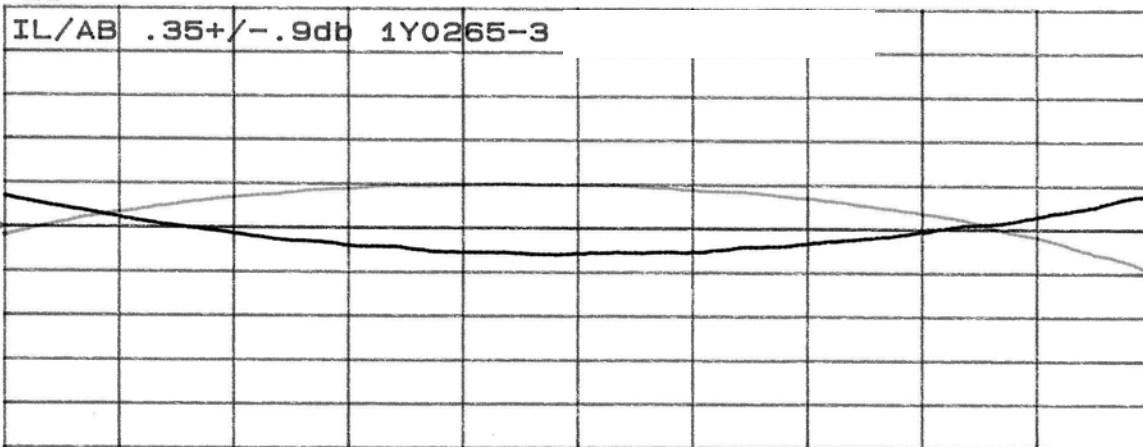
NOTES: Anaren Power rating applies when solder tab/coupler interface has been conformally coated.
 Electrical and Mechanical Specifications subject to change without notice.

Outline Drawing

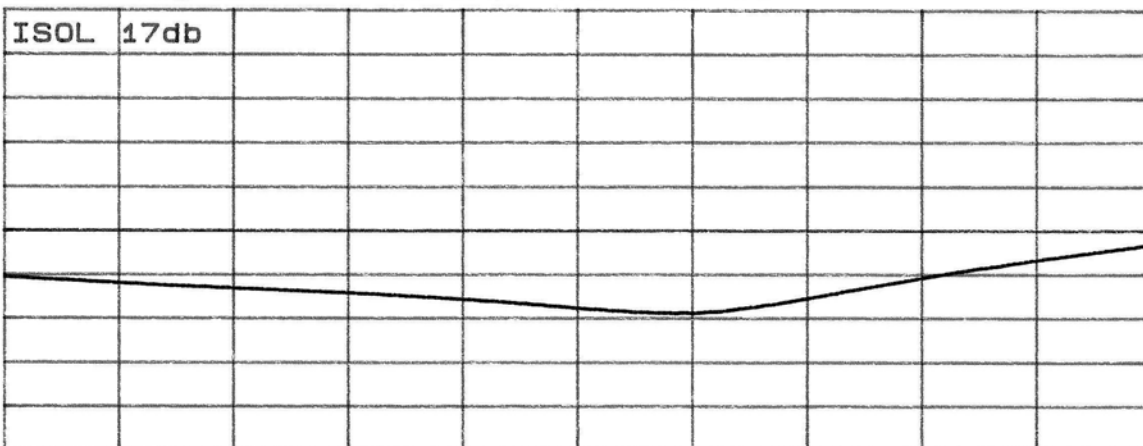


Typical Test Data Plots

CH1 S₂₁ &M log MAG 0.9 dB/ REF -3.35 dB



CH2 MEM log MAG 10 dB/ REF -17 dB



START 0.8000 GHz

STOP 2.1000 GHz