

Hybrid Couplers
High Power 3 dB, 90°

Applications

- Microstrip Circuits
- Power Amps
- Dividers/Combiners
- Switch Networks
- Balanced Detectors
- Antenna Feeds

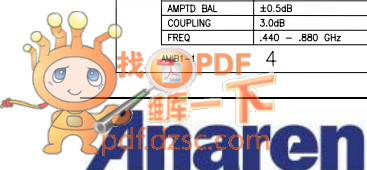
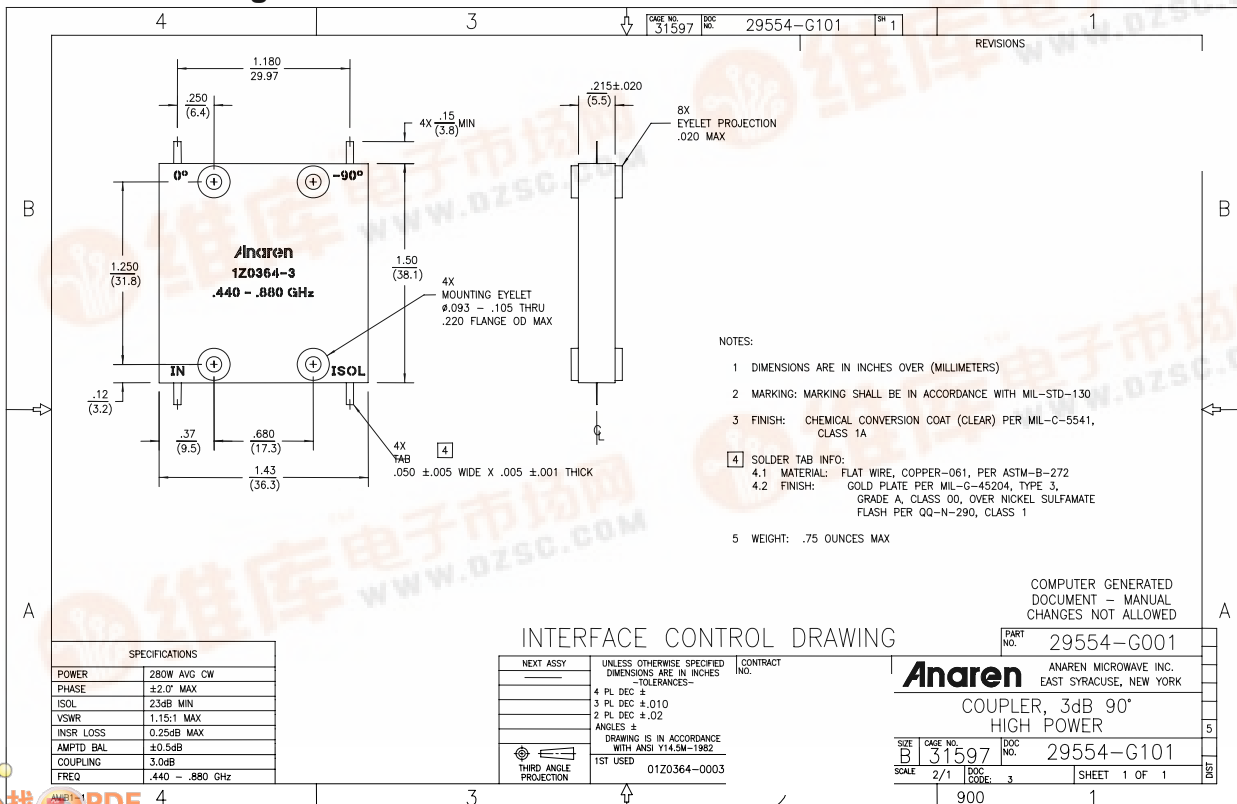
Features

- 0.44 – 0.88 GHz
- 2 – Way power Split
- Welded Tab mount
- Reliable Performance
- Handles 280 Watts
- Meets MIL-E-5400 Class 3 Requirements



NOTES: Anaren Power rating applies when solder tab/coupler interface has been conformally coated.
 Electrical and Mechanical Specifications subject to change without notice.

Outline Drawing



Typical Test Data Plots

