

1.25mm (0.049") PITCH CONNECTOR

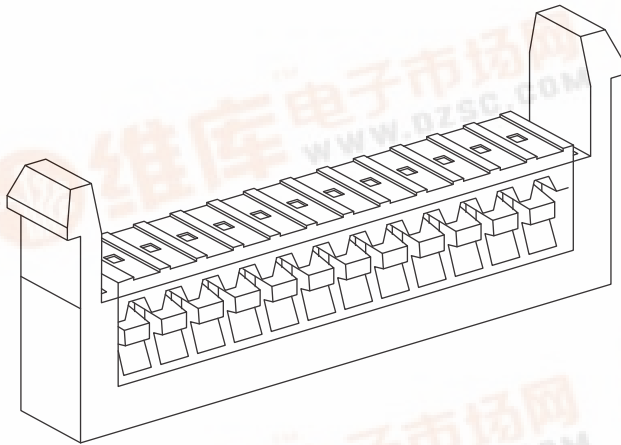


Board-in Connector
Housing

12521HS Series

DIP

Straight

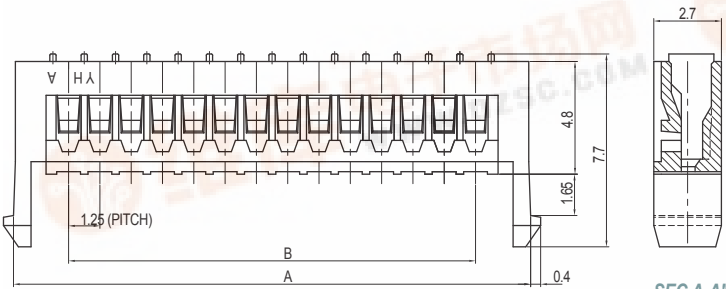


Material

| I/NO | DESCRIPTION | TITLE | MATERIAL |
|------|-------------|---------|----------------------------|
| 1 | HOUSING | 12521HS | PA6T or PA46, UL 94V Grade |

Available Pin

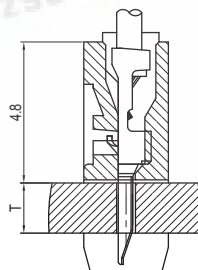
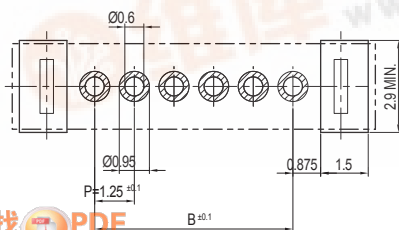
| PARTS NO. | A | B |
|---------------|-------|-------|
| 12521HS-12000 | 18.15 | 13.75 |
| 12521HS-20000 | 28.15 | 23.75 |
| 12521HS-30000 | 40.65 | 36.25 |



SEC A-A"

Specification

| ITEM | SPEC |
|------------------------|-------------|
| Voltage Rating | AC/DC 125V |
| Current Rating | AC/DC 1A |
| Operating Temperature | -25°C~+85°C |
| Contact Resistance | 30mΩ MAX |
| Withstanding Voltage | AC250V/1min |
| Insulation Resistance | 100MΩ MIN |
| Applicable Wire | AWG #26~#32 |
| Applicable P.C.B | 1.2~1.6mm |
| Applicable FPC/FFC | - |
| Solder Height | - |
| Crimp Tensile Strength | - |
| UL FILE NO | - |



PCB ASS'Y

Application Terminal : 12521TS