

119 AHT-DIN

Vishay BCcomponents



Aluminum Capacitors Axial High Temperature, DIN-Based

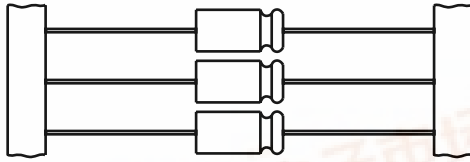
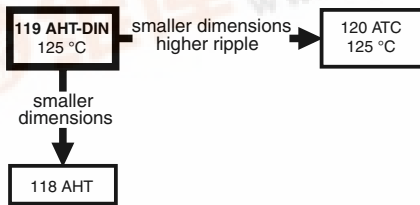


Fig.1 Component outlines



FEATURES

- Polarized aluminum electrolytic capacitors, non-solid electrolyte
- Axial leads, cylindrical aluminum case, insulated with a blue sleeve
- Mounting ring version not available in insulated form
- Taped versions up to case Ø 15 x 30 mm available for automatic insertion
- Charge and discharge proof
- Extra long useful life: up to 8000 hours at 125 °C, high stability, high reliability
- Extended temperature range: 125 °C (usable up to 150 °C)
- High ripple current capability
- Lead (Pb)-free versions are RoHS compliant



RoHS COMPLIANT

APPLICATIONS

- Military, industrial control, EDP and telecommunication
- Smoothing, filtering, buffering in SMPS; coupling, decoupling
- For use where low mounting height is important; vibration and shock resistant

MARKING

The capacitors are marked (where possible) with the following information:

- Rated capacitance (in µF)
- Tolerance on rated capacitance, code letter in accordance with IEC 60062 (T for - 10 to + 50 %)
- Rated voltage (in V) at 125 °C and 85 °C
- Date code, in accordance with IEC 60062
- Code for factory of origin
- Name of manufacturer
- Band to indicate the negative terminal
- '+' sign to identify the positive terminal
- Series number (119)

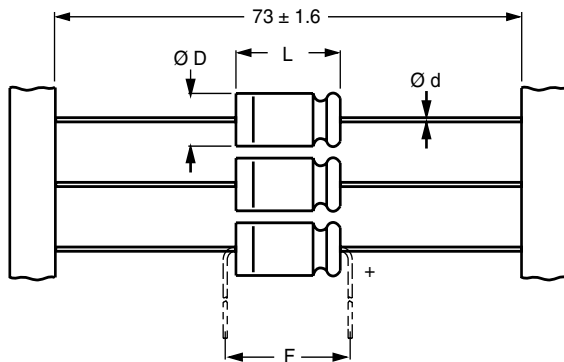
| QUICK REFERENCE DATA | | |
|---|------------------------|-----------------------|
| DESCRIPTION | VALUE | |
| Nominal case sizes (Ø D x L in mm) | 6.5 x 18 to 10 x 25 | 10 x 30 to 21 x 38 |
| Rated capacitance range, C _R | 4.7 to 4700 µF | |
| Tolerance on C _R | - 10/+ 50 % | |
| Rated voltage range, U _R | 10 to 200 V | |
| Category temperature range | - 55 to + 125 °C | |
| Endurance test at 150 °C | 500 hours | 500 hours |
| Endurance test at 125 °C | 2000 hours | 4000 hours |
| Useful life at 125 °C | 4000 hours | 8000 hours |
| Useful life at 40 °C, 1.8 I _R applied | 500 000 hours | 100 0000 hours |
| Shelf life at 0 V, 125 °C: U _R = 10 to 63 V U _R = 100 and 200 V | 500 hours 100 hours | |
| Based on sectional specification | IEC 60384-4/EN130300 | |
| Climatic category IEC 60068 | 55/125/56 | |

| SELECTION CHART FOR C _R , U _R AND RELEVANT NOMINAL CASE SIZES (Ø D x L in mm) | | | | | | | |
|---|--------------------|----------|----------|-----------|----------|-----------|---------|
| C _R (µF) | U _R (V) | | | | | | |
| | 10 | 16 | 25 | 40 | 63 | 100 | 200 |
| 4.7 | - | - | - | - | - | 6.5 x 18 | 10 x 18 |
| 10 | - | - | - | - | 6.5 x 18 | 8 x 18 | 10 x 25 |
| 22 | - | - | 6.5 x 18 | - | 8 x 18 | 10 x 18 | - |
| 47 | - | 6.5 x 18 | - | 8 x 18 | 10 x 18 | 10 x 25 | - |
| | - | - | - | - | - | 10 x 30 | - |
| 68 | - | - | - | - | 10 x 30 | 12.5 x 30 | - |
| 100 | 6.5 x 18 | 8 x 18 | 10 x 18 | 10 x 25 | 10 x 30 | 15 x 30 | - |
| 150 | - | - | - | 12.5 x 30 | 15 x 30 | 15 x 30 | - |



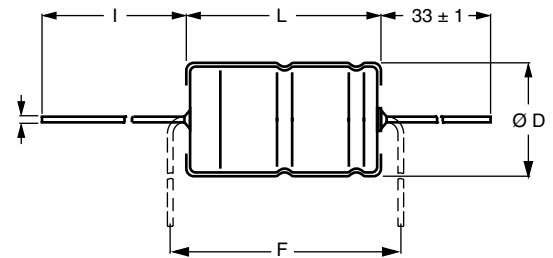
| SELECTION CHART FOR C _R , U _R AND RELEVANT NOMINAL CASE SIZES (∅ D x L in mm) | | | | | | | |
|---|--------------------|-----------|-----------|-----------|---------|---------|-----|
| C _R (μF) | U _R (V) | | | | | | |
| | 10 | 16 | 25 | 40 | 63 | 100 | 200 |
| 220 | 10 x 18 | 10 x 25 | 10 x 25 | 12.5 x 30 | 15 x 30 | 18 x 30 | - |
| | - | - | 12.5 x 30 | - | - | - | - |
| 330 | - | 12.5 x 30 | 12.5 x 30 | 15 x 30 | 18 x 30 | 18 x 38 | - |
| 470 | 10 x 25 | 12.5 x 30 | 12.5 x 30 | 15 x 30 | 18 x 38 | 21 x 38 | - |
| | 12.5 x 30 | - | - | - | - | - | - |
| 680 | 12.5 x 30 | 15 x 30 | 18 x 30 | 18 x 30 | 21 x 38 | - | - |
| 1000 | 15 x 30 | 15 x 30 | 18 x 30 | 18 x 38 | 21 x 38 | - | - |
| 1500 | 18 x 30 | 18 x 30 | 18 x 38 | 21 x 38 | - | - | - |
| 2200 | 18 x 30 | 18 x 38 | 21 x 38 | 21 x 38 | - | - | - |
| 3300 | 18 x 38 | 21 x 38 | - | - | - | - | - |
| 4700 | 21 x 38 | 21 x 38 | - | - | - | - | - |

DIMENSIONS IN MILLIMETERS AND AVAILABLE FORMS



Form BR: Taped on reel
case ∅ D x L = 6.5 x 18 to 15 x 30 mm
Form BA: Taped in box (ammopack)
case ∅ D x L = 6.5 x 18 to 10 x 25 mm

Fig.2 Forms BA and BR



Form AA: Axial in box
case ∅ D x L = 10 x 30 to 21 x 38 mm

Fig.3 Form AA

Table 1

| AXIAL; DIMENSIONS in millimeters, MASS AND PACKAGING QUANTITIES | | | | | | | | | | |
|---|-----------|---------------------------|--------|---------------------|-------------------|-------------------|----------|----------------------|---------|---------|
| NOMINAL CASE SIZE ∅ D x L | CASE CODE | AXIAL FORM AA, BA, and BR | | | | | MASS (g) | PACKAGING QUANTITIES | | |
| | | ∅ d | l | ∅ D _{max.} | L _{max.} | F _{min.} | | FORM AA | FORM BA | FORM BR |
| 6.5 x 18 | 4 | 0.8 | - | 6.9 | 18.5 | 25 | ≈ 1.3 | - | 1000 | 1000 |
| 8 x 18 | 5 | 0.8 | - | 8.5 | 18.5 | 25 | ≈ 1.7 | - | 500 | 500 |
| 10 x 18 | 6 | 0.8 | - | 10.5 | 18.5 | 25 | ≈ 2.5 | - | 500 | 500 |
| 10 x 25 | 7 | 0.8 | - | 10.5 | 25.5 | 30 | ≈ 3.3 | - | 500 | 500 |
| 10 x 30 | 00 | 0.8 | 55 ± 1 | 10.5 | 30.5 | 35 | ≈ 4.8 | 340 | - | 500 |
| 12.5 x 30 | 01 | 0.8 | 55 ± 1 | 13.0 | 30.5 | 35 | ≈ 7.4 | 260 | - | 400 |
| 15 x 30 | 02 | 0.8 | 55 ± 1 | 15.5 | 30.5 | 35 | ≈ 11.7 | 200 | - | 250 |
| 18 x 30 | 03 | 0.8 | 55 ± 1 | 18.5 | 30.5 | 35 | ≈ 12.9 | 120 | - | - |
| 18 x 38 | 04 | 0.8 | 34 ± 1 | 18.5 | 39.5 | 44 | ≈ 19.0 | 125 | - | - |
| 21 x 38 | 05 | 0.8 | 34 ± 1 | 21.5 | 39.5 | 44 | ≈ 24.0 | 100 | - | - |

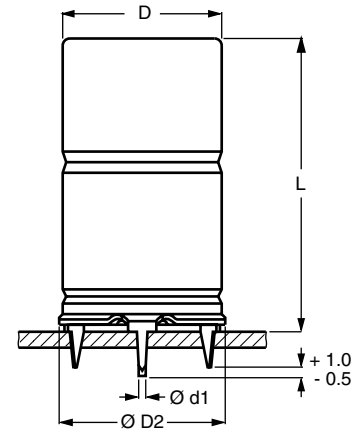
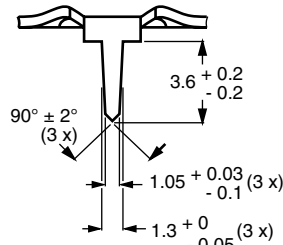
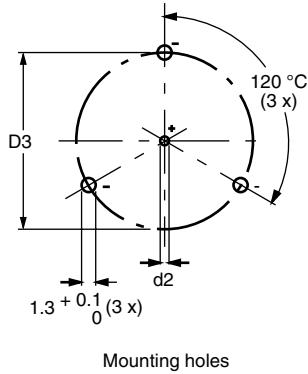
Note

Detailed tape dimensions see section 'PACKAGING'.

119 AHT-DIN

Vishay BCcomponents

Aluminum Capacitors
Axial High Temperature, DIN-Based



Case $\varnothing D \times L = 15 \times 30$ to 21×38 mm
Case not insulated (insulation on request)
Especially for applications with severe shocks and vibrations

Fig.4 Mounting hole digram and outline; **Form MR:** With mounting ring and pins

Table 2

| MOUNTING RING; DIMENSIONS in millimeters, MASS AND PACKAGING QUANTITIES | | | | | | | | | |
|---|-----------|------------------------|------------------|------------------------|-------------------------|------------|-------------------|----------|----------------------|
| NOMINAL CASE SIZE $\varnothing D \times L$ | CASE CODE | MOUNTING RING: FORM MR | | | | | | MASS (g) | PACKAGING QUANTITIES |
| | | $\varnothing d1$ | $\varnothing d2$ | $\varnothing D_{max.}$ | $\varnothing D2_{max.}$ | D3 | L _{max.} | | |
| 15 x 30 | 02 | 0.8 | 1.0 + 0.4 | 15.5 | 17.5 | 16.5 ± 0.2 | 33 | ≈ 8.6 | 200 |
| 18 x 30 | 03 | 0.8 | 1.0 + 0.4 | 18.5 | 19.5 | 18.5 ± 0.2 | 33 | ≈ 11.5 | 240 |
| 18 x 38 | 04 | 0.8 | 1.0 + 0.4 | 18.5 | 19.5 | 18.5 ± 0.2 | 42 | ≈ 14.0 | 100 |
| 21 x 38 | 05 | 0.8 | 1.0 + 0.4 | 21.5 | 22.5 | 21.5 ± 0.2 | 42 | ≈ 19.2 | 100 |

| ELECTRICAL DATA | |
|------------------------|--|
| SYMBOL | DESCRIPTION |
| C_R | rated capacitance at 100 Hz, tolerance - 10/+ 50 % |
| I_R | rated RMS ripple current at 100 Hz, 125 °C |
| I_{L1} | max. leakage current after 1 minute at U_R |
| I_{L5} | max. leakage current after 5 minutes at U_R |
| $\tan \delta$ | max. dissipation factor at 100 Hz |
| ESR | equivalent series resistance at 100 Hz (calculated from $\tan \delta_{max.}$ and C_R) |
| Z | max. impedance at 10 kHz |

Note

Unless otherwise specified, all electrical values in Table 2 apply at $T_{amb} = 20$ °C, P = 86 to 106 kPa, RH = 45 to 75 %.

ORDERING EXAMPLE

Electrolytic capacitor 119 series
470 μ F/16 V; - 10/+ 50 %
Nominal case size: $\varnothing 12.5 \times 30$ mm; Form BR
Ordering code: MAL211925471E3
Former 12NC: 2222 119 25471



Aluminum Capacitors
Axial High Temperature, DIN-Based

Vishay BCcomponents

Table 2

| ELECTRICAL DATA AND ORDERING INFORMATION | | | | | | | | | | | | | |
|--|----------------------------------|---|--------------|--|----------------------------------|----------------------------------|-----------------|----------------------|--------------------|----------------------------|-----------------------------|----------------------------|-----------------------------|
| U _R (V) | C _R 100 Hz (μF) | NOMINAL CASE SIZE Ø D x L (mm) | CASE CODE | I _R 100 Hz 125 °C (mA) | I _{L1} 1 min (μA) | I _{L5} 5 min (μA) | Tan δ 100 Hz | ESR 100 Hz (Ω) | Z 10 kHz (Ω) | ORDERING CODE MAL2119..... | | | |
| | | | | | | | | | | IN BOX FORM AA | TAPED ON REEL FORM BR | TAPED IN BOX FORM BA | MOUNTING RING FORM MR |
| 10 | 100 | 6.5 x 18 | 4 | 130 | 10 | 6 | 0.2 | 3.5 | 2.2 | - | 24101E3 | 34101E3 | - |
| | 220 | 10 x 18 | 6 | 240 | 17 | 8.4 | 0.18 | 1.3 | 1.0 | - | 24221E3 | 34221E3 | - |
| | 470 | 10 x 25 | 7 | 380 | 32 | 13 | 0.18 | 0.61 | 0.49 | - | 90501E3 | 90502E3 | - |
| | 470 | 12.5 x 30 | 01 | 550 | 32 | 13 | 0.16 | 0.54 | 0.38 | 14471E3 | 24471E3 | - | - |
| | 680 | 12.5 x 30 | 01 | 640 | 45 | 18 | 0.20 | 0.47 | 0.38 | 14681E3 | 24681E3 | - | - |
| | 1000 | 15 x 30 | 02 | 830 | 64 | 24 | 0.20 | 0.32 | 0.24 | 90032E3 | 24102E3 | - | 44102E3 |
| | 1500 | 18 x 30 | 03 | 1100 | 94 | 34 | 0.22 | 0.23 | 0.17 | 14152E3 | - | - | 44152E3 |
| | 2200 | 18 x 30 | 03 | 1190 | 136 | 48 | 0.26 | 0.19 | 0.17 | 14222E3 | - | - | 44222E3 |
| | 3300 | 18 x 38 | 04 | 1550 | 202 | 70 | 0.27 | 0.13 | 0.10 | 14332E3 | - | - | 44332E3 |
| | 4700 | 21 x 38 | 05 | 1700 | 286 | 90 | 0.30 | 0.10 | 0.09 | 14472E3 | - | - | 44472E3 |
| 16 | 47 | 6.5 x 18 | 4 | 110 | 10 | 5.5 | 0.13 | 4.4 | 2.2 | - | 25479E3 | 35479E3 | - |
| | 100 | 8 x 18 | 5 | 170 | 14 | 7.2 | 0.13 | 2.1 | 1.3 | - | 25101E3 | 35101E3 | - |
| | 220 | 10 x 25 | 7 | 300 | 25 | 11 | 0.13 | 0.94 | 0.55 | - | 25221E3 | 35221E3 | - |
| | 330 | 12.5 x 30 | 01 | 560 | 36 | 15 | 0.13 | 0.63 | 0.38 | 15331E3 | 25331E3 | - | - |
| | 470 | 12.5 x 30 | 01 | 570 | 50 | 19 | 0.15 | 0.51 | 0.38 | 15471E3 | 25471E3 | - | - |
| | 680 | 15 x 30 | 02 | 750 | 69 | 26 | 0.15 | 0.35 | 0.24 | 15681E3 | 25681E3 | - | 45681E3 |
| | 1000 | 15 x 30 | 02 | 850 | 100 | 36 | 0.19 | 0.30 | 0.24 | 15102E3 | 25102E3 | - | 45102E3 |
| | 1500 | 18 x 30 | 03 | 1120 | 148 | 52 | 0.20 | 0.21 | 0.17 | 15152E3 | - | - | 45152E3 |
| | 2200 | 18 x 38 | 04 | 1440 | 215 | 74 | 0.20 | 0.14 | 0.10 | 15222E3 | - | - | 45222E3 |
| | 3300 | 21 x 38 | 05 | 1650 | 321 | 110 | 0.22 | 0.11 | 0.09 | 15332E3 | - | - | 45332E3 |
| 4700 | 21 x 38 | 05 | 1710 | 455 | 154 | 0.28 | 0.09 | 0.09 | 15472E3 | - | - | 45472E3 | |
| 25 | 22 | 6.5 x 18 | 4 | 85 | 10 | 5.1 | 0.10 | 7.2 | 3.2 | - | 26229E3 | 36229E3 | - |
| | 100 | 10 x 18 | 6 | 210 | 19 | 9 | 0.10 | 1.6 | 1.0 | - | 26101E3 | 36101E3 | - |
| | 220 | 10 x 25 | 7 | 350 | 37 | 15 | 0.10 | 0.72 | 0.58 | - | 90503E3 | 90504E3 | - |
| | 220 | 12.5 x 30 | 01 | 500 | 37 | 15 | 0.09 | 0.65 | 0.38 | 16221E3 | 26221E3 | - | - |
| | 330 | 12.5 x 30 | 01 | 580 | 54 | 21 | 0.11 | 0.53 | 0.38 | 16331E3 | 26331E3 | - | - |
| | 470 | 12.5 x 30 | 01 | 630 | 75 | 28 | 0.13 | 0.44 | 0.38 | 16471E3 | 26471E3 | - | - |
| | 680 | 18 x 30 | 03 | 990 | 106 | 38 | 0.13 | 0.30 | 0.17 | 16681E3 | - | - | 46681E3 |
| | 1000 | 18 x 30 | 03 | 1090 | 154 | 54 | 0.13 | 0.21 | 0.17 | 16102E3 | - | - | 46102E3 |
| | 1500 | 18 x 38 | 04 | 1420 | 229 | 79 | 0.13 | 0.14 | 0.10 | 16152E3 | - | - | 46152E3 |
| | 2200 | 21 x 38 | 05 | 1550 | 334 | 114 | 0.13 | 0.11 | 0.09 | 16222E3 | - | - | 46222E3 |
| 40 | 47 | 8 x 18 | 5 | 150 | 15 | 7.8 | 0.08 | 2.7 | 1.5 | - | 27479E3 | 37479E3 | - |
| | 100 | 10 x 25 | 7 | 260 | 28 | 12 | 0.08 | 1.3 | 0.7 | - | 27101E3 | 37101E3 | - |
| | 150 | 12.5 x 30 | 01 | 440 | 40 | 16 | 0.08 | 0.85 | 0.51 | 17151E3 | 27151E3 | - | - |
| | 220 | 12.5 x 30 | 01 | 500 | 57 | 22 | 0.09 | 0.65 | 0.48 | 17221E3 | 27221E3 | - | - |
| | 330 | 15 x 30 | 02 | 630 | 83 | 30 | 0.09 | 0.43 | 0.37 | 17331E3 | 27331E3 | - | 47331E3 |
| | 470 | 15 x 30 | 02 | 720 | 117 | 42 | 0.12 | 0.41 | 0.37 | 17471E3 | 27471E3 | - | 47471E3 |
| | 680 | 18 x 30 | 03 | 970 | 167 | 58 | 0.12 | 0.28 | 0.22 | 17681E3 | - | - | 47681E3 |
| | 1000 | 18 x 38 | 04 | 1250 | 244 | 84 | 0.12 | 0.19 | 0.14 | 17102E3 | - | - | 47102E3 |
| | 1500 | 21 x 38 | 05 | 1410 | 364 | 124 | 0.14 | 0.15 | 0.12 | 17152E3 | - | - | 47152E3 |
| | 2200 | 21 x 38 | 05 | 1550 | 532 | 180 | 0.18 | 0.13 | 0.11 | 17222E3 | - | - | 47222E3 |

119 AHT-DIN



Vishay BCcomponents

Aluminum Capacitors
Axial High Temperature, DIN-Based

| ELECTRICAL DATA AND ORDERING INFORMATION | | | | | | | | | | | | | |
|--|----------------------------------|---|--------------|--|----------------------------------|----------------------------------|-----------------|----------------------|--------------------|----------------------------|-----------------------------|----------------------------|-----------------------------|
| U _R (V) | C _R 100 Hz (μF) | NOMINAL CASE SIZE Ø D x L (mm) | CASE CODE | I _R 100 Hz 125 °C (mA) | I _{L1} 1 min (μA) | I _{L5} 5 min (μA) | Tan δ 100 Hz | ESR 100 Hz (Ω) | Z 10 kHz (Ω) | ORDERING CODE MAL2119..... | | | |
| | | | | | | | | | | IN BOX FORM AA | TAPED ON REEL FORM BR | TAPED IN BOX FORM BA | MOUNTING RING FORM MR |
| 63 | 10 | 6.5 x 18 | 4 | 68 | 20 | 5.3 | 0.07 | 11 | 5.6 | - | 28109E3 | 38109E3 | - |
| | 22 | 8 x 18 | 5 | 110 | 20 | 6.7 | 0.07 | 5.1 | 2.8 | - | 28229E3 | 38229E3 | - |
| | 47 | 10 x 18 | 6 | 180 | 22 | 9.9 | 0.07 | 2.4 | 1.3 | - | 28479E3 | 38479E3 | - |
| | 68 | 10 x 25 | 7 | 230 | 30 | 13 | 0.07 | 1.6 | 1.0 | - | 90505E3 | 90506E3 | - |
| | 68 | 10 x 30 | 00 | 300 | 30 | 13 | 0.07 | 1.6 | 0.92 | 18689E3 | 28689E3 | - | - |
| | 100 | 10 x 30 | 00 | 360 | 42 | 17 | 0.08 | 1.3 | 0.75 | 18101E3 | 28101E3 | - | - |
| | 150 | 15 x 30 | 02 | 560 | 61 | 23 | 0.08 | 0.85 | 0.37 | 18151E3 | 28151E3 | - | 48151E3 |
| | 220 | 15 x 30 | 02 | 640 | 87 | 32 | 0.08 | 0.58 | 0.37 | 18221E3 | 28221E3 | - | 48221E3 |
| | 330 | 18 x 30 | 03 | 880 | 129 | 46 | 0.09 | 0.43 | 0.23 | 18331E3 | - | - | 48331E3 |
| | 470 | 18 x 38 | 04 | 1130 | 182 | 63 | 0.09 | 0.30 | 0.15 | 18471E3 | - | - | 48471E3 |
| | 680 | 21 x 38 | 05 | 1290 | 261 | 90 | 0.09 | 0.21 | 0.12 | 18681E3 | - | - | 48681E3 |
| 1000 | 21 x 38 | 05 | 1430 | 382 | 130 | 0.10 | 0.16 | 0.11 | 18102E3 | - | - | 48102E3 | |
| 100 | 4.7 | 6.5 x 18 | 4 | 44 | 20 | 10 | 0.08 | 27 | 10 | - | 29478E3 | 39478E3 | - |
| | 10 | 8 x 18 | 5 | 70 | 20 | 10 | 0.08 | 13 | 6.0 | - | 29109E3 | 39109E3 | - |
| | 22 | 10 x 18 | 6 | 112 | 20 | 10 | 0.08 | 5.8 | 3.5 | - | 29229E3 | 39229E3 | - |
| | 47 | 10 x 25 | 7 | 178 | 32 | 13 | 0.08 | 2.7 | 2.0 | - | 90518E3 | 90519E3 | - |
| | 47 | 10 x 30 | 00 | 240 | 32 | 13 | 0.08 | 2.7 | 2.0 | 19479E3 | 29479E3 | - | - |
| | 68 | 12.5 x 30 | 01 | 330 | 45 | 18 | 0.08 | 1.9 | 1.2 | 19689E3 | 29689E3 | - | - |
| | 100 | 15 x 30 | 02 | 440 | 64 | 24 | 0.09 | 1.4 | 0.96 | 19101E3 | 29101E3 | - | 49101E3 |
| | 150 | 15 x 30 | 02 | 520 | 94 | 34 | 0.10 | 1.1 | 0.78 | 19151E3 | 29151E3 | - | 49151E3 |
| | 220 | 18 x 30 | 03 | 710 | 136 | 48 | 0.10 | 0.72 | 0.55 | 19221E3 | - | - | 49221E3 |
| | 330 | 18 x 38 | 04 | 920 | 202 | 70 | 0.10 | 0.48 | 0.37 | 19331E3 | - | - | 49331E3 |
| 470 | 21 x 38 | 05 | 1070 | 286 | 98 | 0.10 | 0.34 | 0.28 | 19471E3 | - | - | 49471E3 | |
| 200 | 4.7 | 10 x 18 | 6 | 52 | 20 | 10 | 0.08 | 27 | 10 | - | 90507E3 | 90508E3 | - |
| | 10 | 10 x 25 | 7 | 82 | 20 | 10 | 0.08 | 13 | 5.0 | - | 90509E3 | 90511E3 | - |

| ADDITIONAL ELECTRICAL DATA | | | |
|----------------------------|--|--|---------------|
| PARAMETER | CONDITIONS | VALUE | |
| | | AXIAL | MOUNTING RING |
| Voltage | | | |
| Surge voltage | | $U_s \leq 1.15 \times U_R$ | |
| Reverse voltage | | $U_{rev} \leq 1 \text{ V}$ | |
| Current | | | |
| Leakage current | After 1 minute: $U_R = 10 \text{ to } 40 \text{ V}$ $U_R = 63 \text{ V to } 200 \text{ V}$ | $I_{L1} \leq 0.006 C_R \times U_R + 4 \mu\text{A}$, or $10 \mu\text{A}$ (whichever is greater) $I_{L1} \leq 0.006 C_R \times U_R + 4 \mu\text{A}$, or $20 \mu\text{A}$ (whichever is greater) | |
| | After 5 minutes: $U_R = 10 \text{ to } 63 \text{ V}$ $U_R = 100 \text{ and } 200 \text{ V}$ | $I_{L5} \leq 0.002 C_R \times U_R + 4 \mu\text{A}$ $I_{L5} \leq 0.002 C_R \times U_R + 4 \mu\text{A}$, or $10 \mu\text{A}$ (whichever is greater) | |
| Inductance | | | |



| ADDITIONAL ELECTRICAL DATA | | | |
|------------------------------------|------------------|------------|---------------|
| PARAMETER | CONDITIONS | VALUE | |
| | | AXIAL | MOUNTING RING |
| Equivalent series inductance (ESL) | Case Ø D x L mm: | | |
| | 6.5 x 18 | typ. 15 nH | - |
| | 8 x 18 | typ. 35 nH | - |
| | 10 x 18 | typ. 69 nH | - |
| | 10 x 25 | typ. 38 nH | - |
| | 10 x 30 | typ. 38 nH | - |
| | 12.5 x 30 | typ. 46 nH | - |
| | 15 x 30 | typ. 48 nH | typ. 39 nH |
| | 18 x 30 | typ. 50 nH | typ. 39 nH |
| | 18 x 38 | typ. 54 nH | typ. 39 nH |
| | 21 x 38 | typ. 59 nH | typ. 39 nH |

Table 3

| OPERATING VALUES AT REDUCED AMBIENT TEMPERATURE | | | | | | | | | |
|---|---|--------|----|----|----|-----|-----|-----|------|
| SYMBOL | CONDITIONS | VALUES | | | | | | | UNIT |
| U_R | $T_{amb} > 85 \text{ to } 125 \text{ }^\circ\text{C}$ | 10 | 16 | 25 | 40 | 63 | 100 | 200 | V |
| U_{R2} | $T_{amb} \leq 85 \text{ }^\circ\text{C}$ | 16 | 25 | 40 | 63 | 100 | 125 | 250 | V |

Note

- For applications at ambient temperatures of $\leq 85 \text{ }^\circ\text{C}$, the rated voltage (U_R) may be raised to U_{R2} .

CAPACITANCE (C)

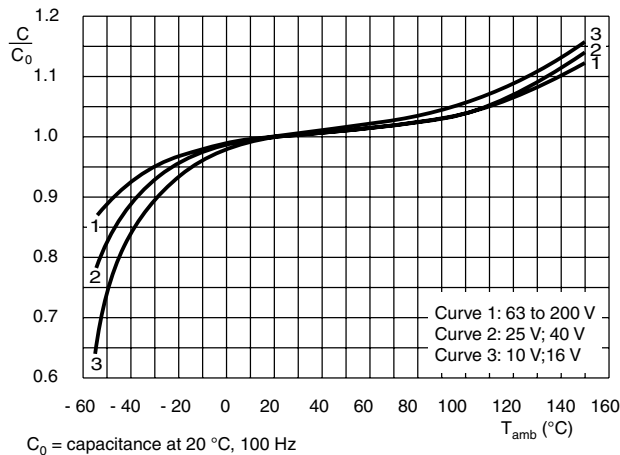


Fig.5 Typical multiplier of capacitance as a function of ambient temperature

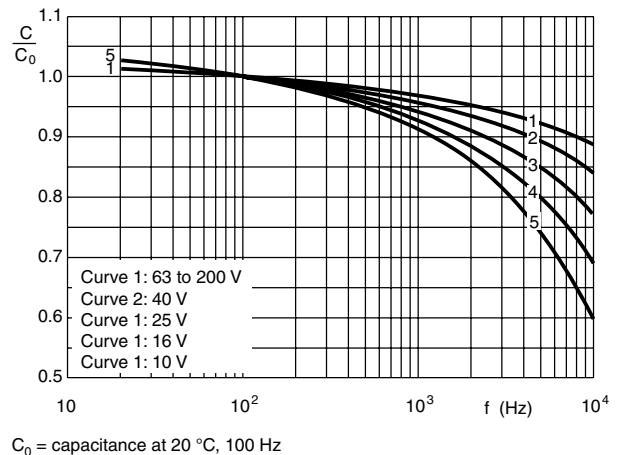
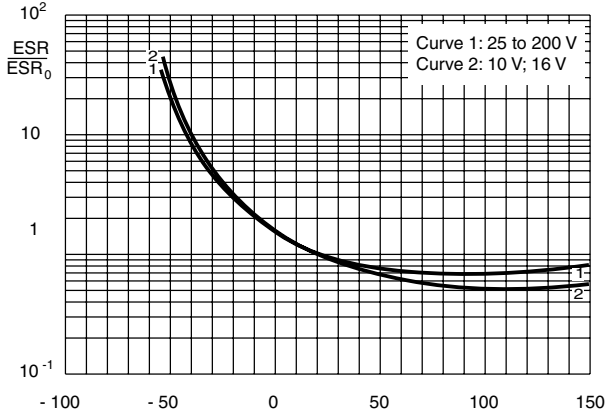


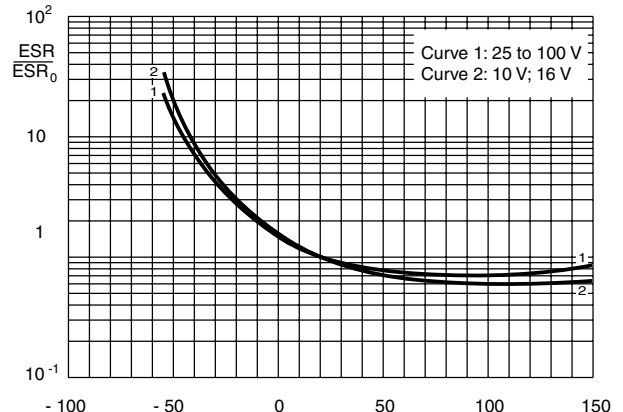
Fig.6 Typical multiplier of capacitance as a function of ambient temperature

EQUIVALENT SERIES RESISTANCE (ESR)



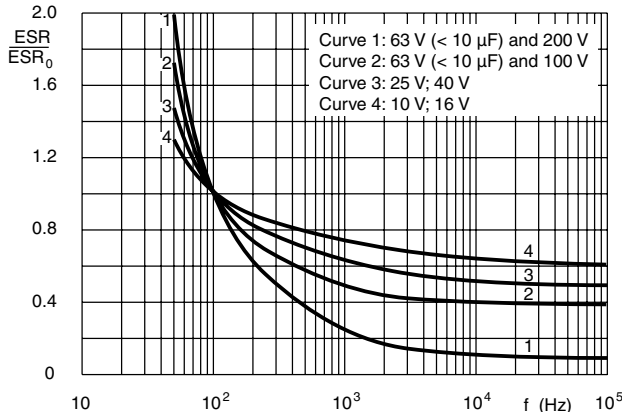
Case Ø D x L = 6.5 x 18 to 15 x 30 mm
ESR₀ = typical at 20 °C, 100 Hz

Fig.7 Typical multiplier of ESR as a function of ambient temperature



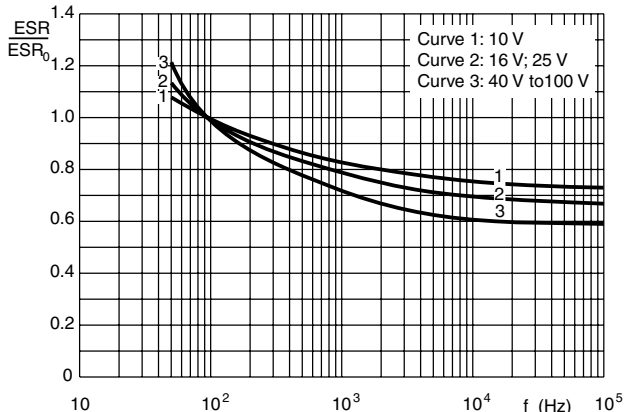
Case Ø D x L = 18 x 30 to 21 x 38 mm
ESR₀ = typical at 20 °C, 100 Hz

Fig.8 Typical multiplier of ESR as a function of ambient temperature



Case Ø D x L = 6.5 x 18 to 10 x 25 mm
ESR₀ = typical at 20 °C, 100 Hz

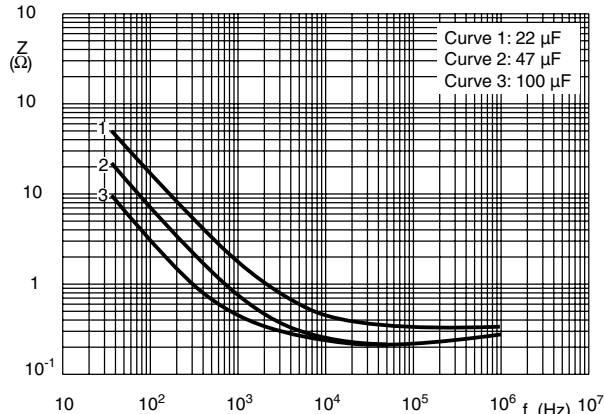
Fig.9 Typical multiplier of ESR as a function of frequency



Case Ø D x L = 10 x 30 to 21 x 38 mm
ESR₀ = typical at 20 °C, 100 Hz

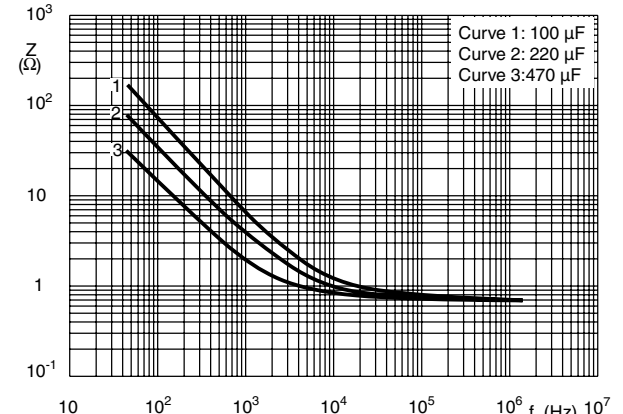
Fig.10 Typical multiplier of ESR as a function of frequency

IMPEDANCE (Z)



Case Ø D x L = 8 x 18 mm

Fig.11 Typical impedance as a function of frequency



Case Ø D x L = 8 x 18 mm

Fig.12 Typical impedance as a function of frequency



IMPEDANCE (Z)

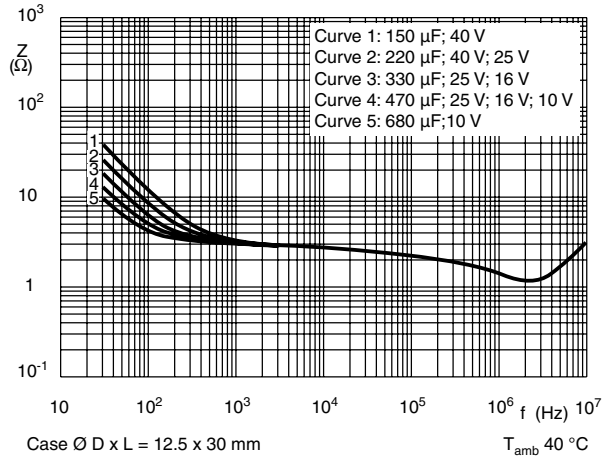


Fig.13 Typical impedance as a function of frequency

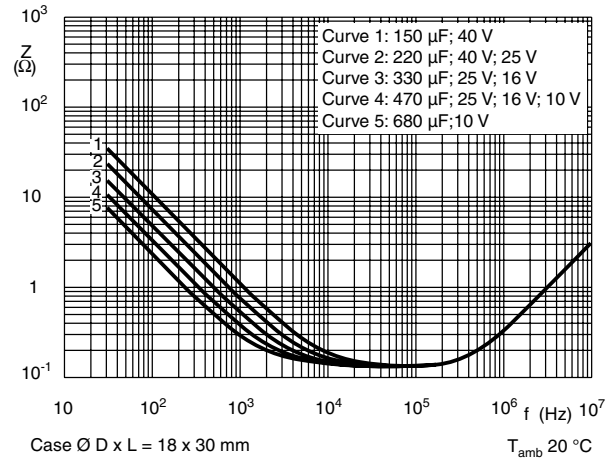


Fig.14 Typical impedance as a function of frequency

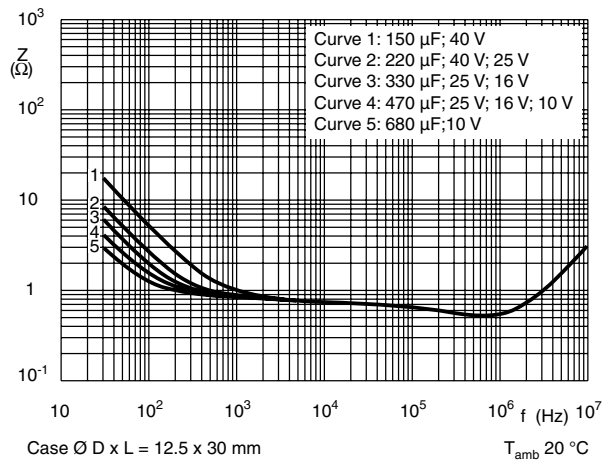


Fig.15 Typical impedance as a function of frequency

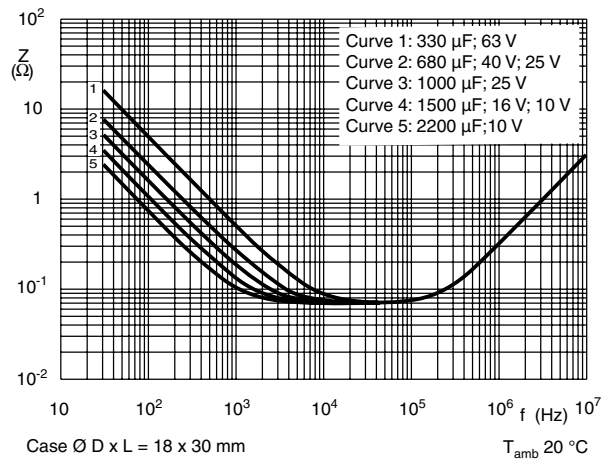


Fig.16 Typical impedance as a function of frequency



RIPPLE CURRENT AND USEFUL LIFE

MBC242

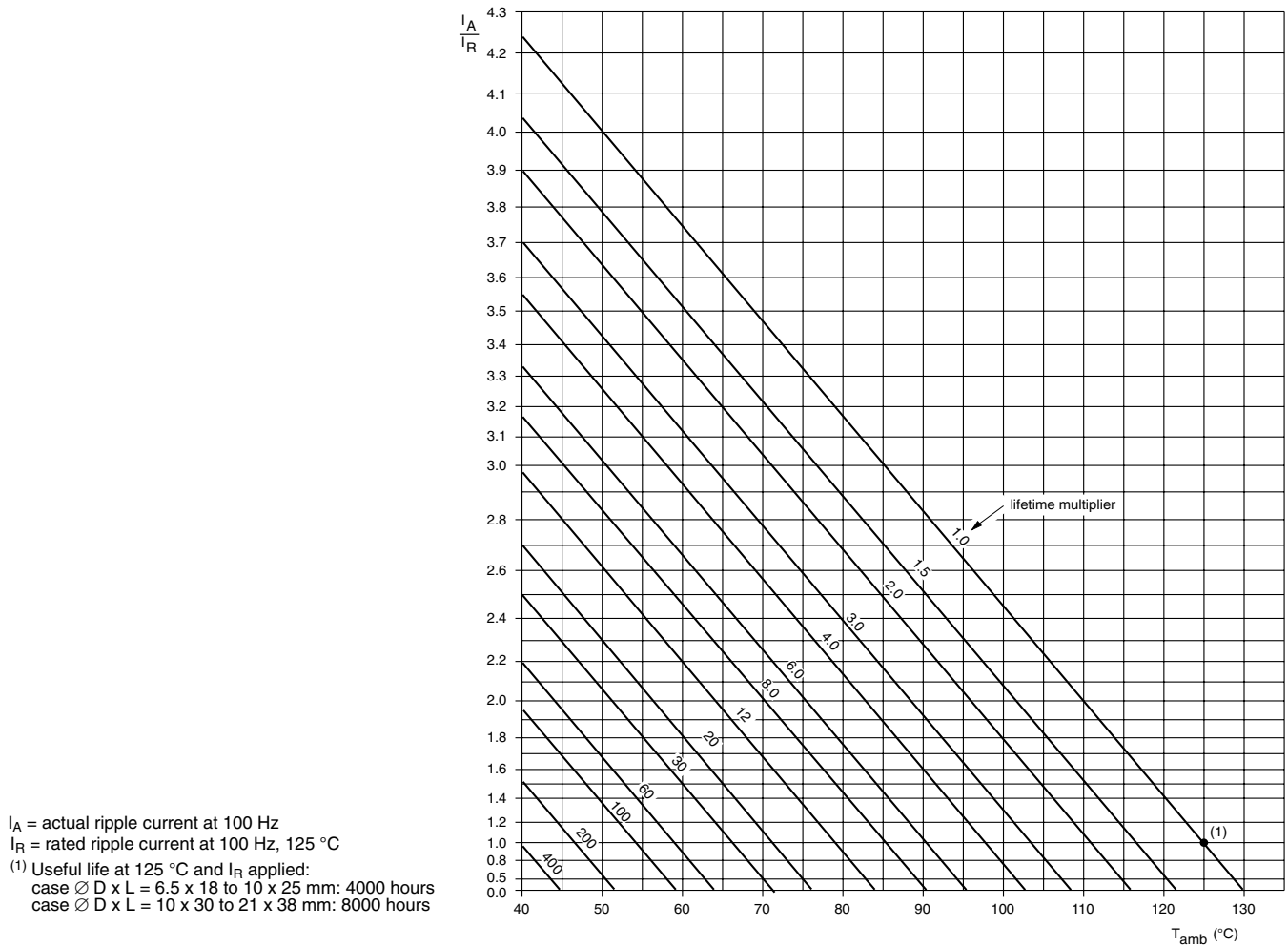


Fig.17 Multiplier of useful life as a function of ambient temperature and ripple current load

Table 4

| MULTIPLIER OF RIPPLE CURRENT (I_R) AS A FUNCTION OF FREQUENCY | | | |
|---|-----------------------|-----------------------|-----------------------|
| FREQUENCY (Hz) | I_R MULTIPLIER | | |
| | $U_R = 10$ and 16 V | $U_R = 25$ and 40 V | $U_R = 63$ to 200 V |
| 50 | 0.95 | 0.90 | 0.85 |
| 100 | 1.00 | 1.00 | 1.00 |
| 300 | 1.07 | 1.12 | 1.20 |
| 1000 | 1.12 | 1.20 | 1.30 |
| 3000 | 1.15 | 1.25 | 1.35 |
| $\geq 10\ 000$ | 1.20 | 1.30 | 1.40 |



Table 5

| TEST PROCEDURES AND REQUIREMENTS | | | |
|--|--|---|---|
| TEST | | PROCEDURE (quick reference) | REQUIREMENTS |
| NAME OF TEST | REFERENCE | | |
| Endurance | IEC 60384-4/ EN130300 subclause 4.13 | T _{amb} = 125 °C; U _R applied; Case Ø D x L = 6.5 x 18 to 10 x 25 mm: 2000 hours; Case Ø D x L = 10 x 30 to 21 x 38 mm: 4000 hours | ΔC/C: ± 15 % tan δ ≤ 1.3 x spec. limit Z ≤ 2 x spec. limit I _{L5} ≤ spec. limit |
| Useful life | CECC 30301 subclause 1.8.1 | T _{amb} = 125 °C; U _R and I _R applied; Case Ø D x L = 6.5 x 18 to 10 x 25 mm: 4000 hours; Case Ø D x L = 10 x 30 to 21 x 38 mm: 8000 hours | ΔC/C: ± 45 % tan δ ≤ 3 x spec. limit Z ≤ 3 x spec. limit I _{L5} ≤ spec. limit no short or open circuit total failure percentage: ≤ 1 % (200 V ≤ 3 %) |
| Shelf life (storage at high temperature) | IEC 60384-4/ EN130300 subclause 4.17 | T _{amb} = 125 °C; no voltage applied; U _R = 10 to 63 V: 500 hours; U _R = 100 and 200 V: 100 hours After test: U _R to be applied for 30 minutes, 24 to 48 hours before measurement | ΔC/C, tan δ, Z: for requirements see 'Endurance test' above I _{L5} ≤ 2 x spec. limit |
| Reverse voltage | IEC 60384-4/ EN130300 subclause 4.15 | T _{amb} = 125 °C: 125 hours at U = - 1 V followed by 125 hours at U _R | ΔC/C: ± 20 % tan δ ≤ spec. limit I _{L5} ≤ spec. limit |



Disclaimer

All product specifications and data are subject to change without notice.

Vishay Intertechnology, Inc., its affiliates, agents, and employees, and all persons acting on its or their behalf (collectively, "Vishay"), disclaim any and all liability for any errors, inaccuracies or incompleteness contained herein or in any other disclosure relating to any product.

Vishay disclaims any and all liability arising out of the use or application of any product described herein or of any information provided herein to the maximum extent permitted by law. The product specifications do not expand or otherwise modify Vishay's terms and conditions of purchase, including but not limited to the warranty expressed therein, which apply to these products.

No license, express or implied, by estoppel or otherwise, to any intellectual property rights is granted by this document or by any conduct of Vishay.

The products shown herein are not designed for use in medical, life-saving, or life-sustaining applications unless otherwise expressly indicated. Customers using or selling Vishay products not expressly indicated for use in such applications do so entirely at their own risk and agree to fully indemnify Vishay for any damages arising or resulting from such use or sale. Please contact authorized Vishay personnel to obtain written terms and conditions regarding products designed for such applications.

Product names and markings noted herein may be trademarks of their respective owners.