

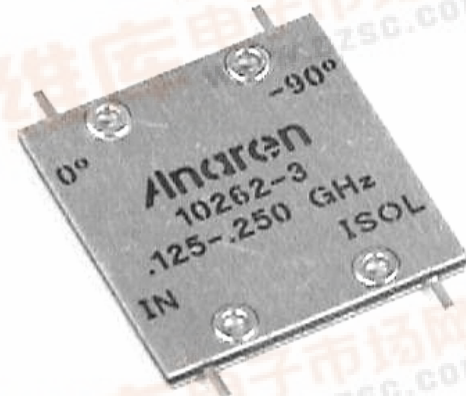
**Hybrid Couplers**  
**3 dB, 90°**

**Applications**

- Microstrip Circuits
- Dividers/Combiners
- Switch Networks
- Balanced Detectors
- Antenna Feeds

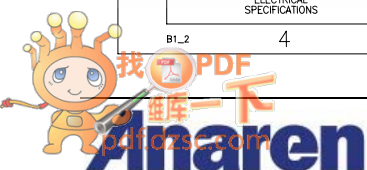
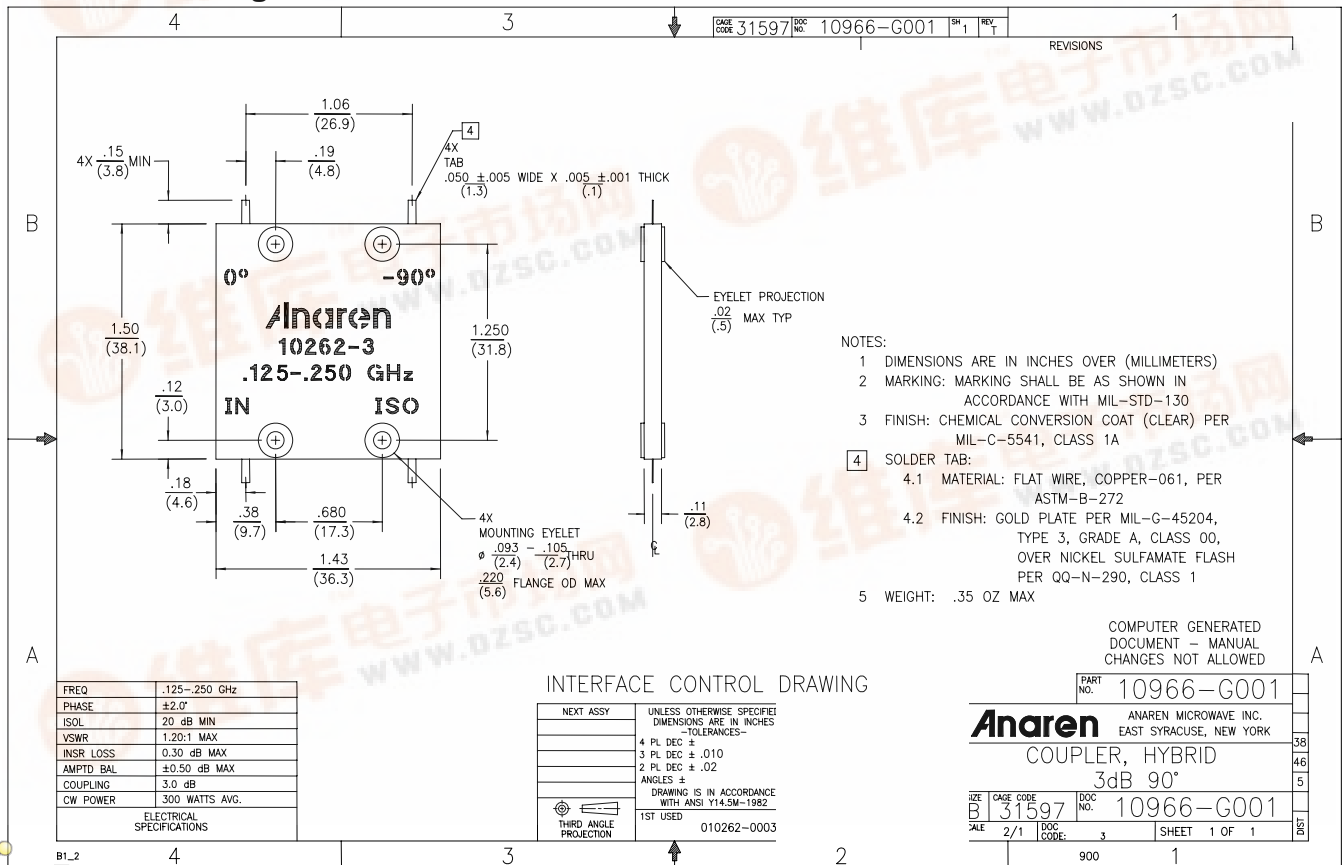
**Features**

- 0.125 – 0.25 GHz
- Welded Tab mount
- Reliable Performance
- Handles 300 Watts
- Meets MIL-E-5400 Class 3 Requirements



**NOTES:** Anaren Power rating applies when solder tab/coupler interface has been conformally coated.  
 Electrical and Mechanical Specifications subject to change without notice.

**Outline Drawing**



Typical Test Data Plots

