

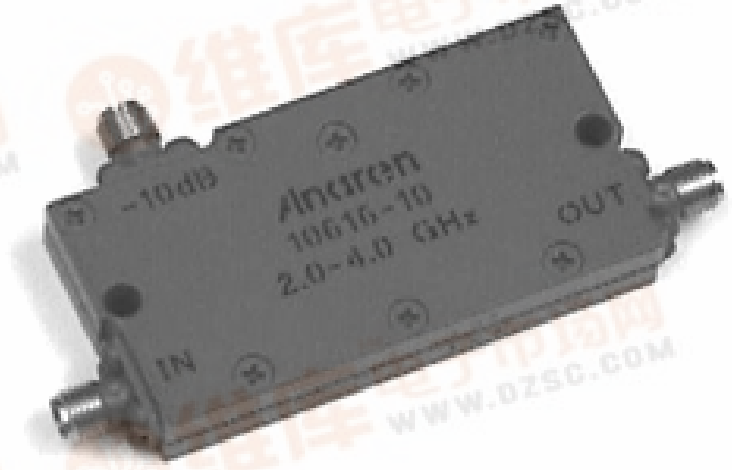
**Directional Couplers**  
*In-Line Style*

**Applications**

- Subassemblies
- Lab Systems
- Leveling Loops
- Power Monitoring
- Test and Calibration

**Features**

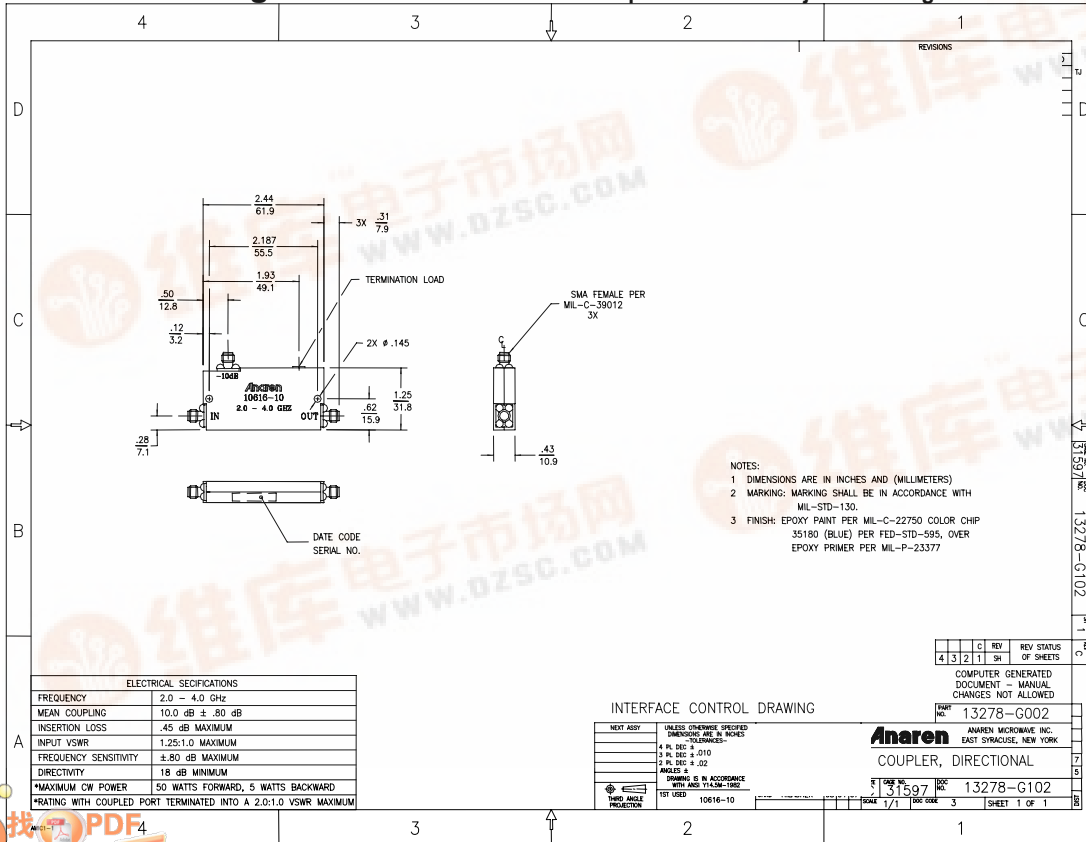
- Military Grade
- 2.0 – 4.0 GHz
- In-Line Configuration
- Connectors Per MIL-C-39012
- Rugged Aluminum Housing
- Built in Termination
- Meets MIL-E-5400 Class 3 Requirements



**NOTES:** The power rating applies when coupled port VSWR is 2.0:1 or less.  
 Higher power can be handled with a lower VSWR termination

**Electrical and Mechanical Specifications subject to change without notice**

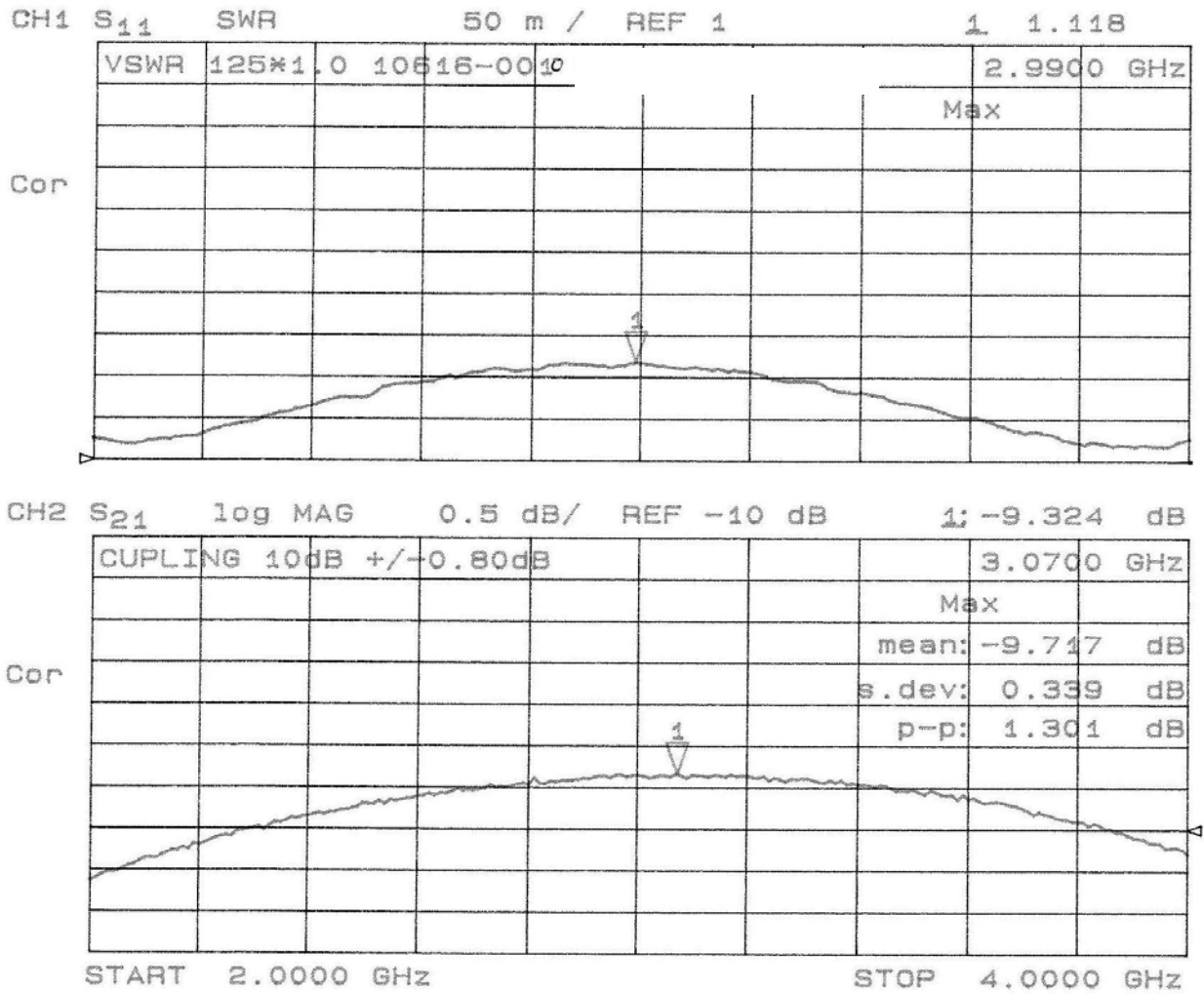
**Outline Drawing**



# Model 10616-10



## Typical Test Data Plots



### Typical Test Data Plots

