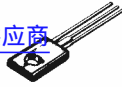


2SB559

2SB559 供应商



捷多邦, 专业PCB打样工厂

, 24小时加急出货

PNP Planar Epitaxial Planar Silicon Transistors

2009A

2SD439

Low Frequency Power Amp, Medium Speed Switching Applications

0372E

Features

- Large allowable collector dissipation and wide ASO.
- Low saturation voltage and good linearity of h_{FE} .
- Suited for use in output stage of low-voltage high-output ($P_o=2W/V_{CC}=4.5V$) AF amp.

() : 2SB559

Absolute Maximum Ratings at $T_a=25^\circ C$

Parameter	Symbol	Value	Unit
Collector to Base Voltage	V_{CBO}	(-)20	V
Collector to Emitter Voltage	V_{CEO}	(-)18	V
Emitter to Base Voltage	V_{EBO}	(-)5	V
Collector Current	I_C	(-)1.2	A
Peak Collector Current	i_{cp}	(-)2.0	A
Collector Dissipation	P_C	1	W
		8	W
		150	$^\circ C$
Junction Temperature	T_j	-55 to +150	$^\circ C$
Storage Temperature	T_{stg}		

Electrical Characteristics at $T_a=25^\circ C$

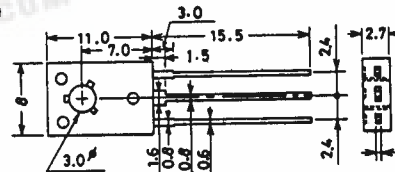
Parameter	Symbol	Test Conditions	min	typ	max	Unit
C-B Breakdown Voltage	$V_{(BR)CBO}$	$I_C=(-)10\mu A, I_E=0$	(-)20			V
C-E Breakdown Voltage	$V_{(BR)CEO}$	$I_C=(-)1mA, R_{BE}=\infty$	(-)18			V
E-B Breakdown Voltage	$V_{(BR)EBO}$	$I_E=(-)10\mu A, I_C=0$	(-)5			V
Collector Cutoff Current	I_{CBO}	$V_{CB}=(-)15V, I_E=0$	(-)1			μA
Emitter Cutoff Current	I_{EBO}	$V_{EB}=(-)4V, I_C=0$	(-)1			μA
DC Current Gain	$h_{FE}(1)$	$V_{CE}=(-)2V, I_C=(-)500mA$	60*		320*	
	$h_{FE}(2)$	$V_{CE}=(-)2V, I_C=(-)1.5A_{(pulse)}$	(40)50			
Gain Bandwidth Product	f_T	$V_{CE}=(-)10V, I_C=(-)50mA$		150		MHz
Collector Capacitance	c_{ob}	$V_{CE}=(-)10V, f=1MHz$	(30)20			pF
C-E Saturation Voltage	$V_{CE(sat)}$	$I_C=(-)1A, I_B=(-)50mA$	(-0.35)	(-0.7)		V
			0.25	0.5		V
B-E Saturation Voltage	$V_{BE(sat)}$	$I_C=(-)500mA, I_B=(-)50mA$	(-)0.85	(-)1.2		V
Turn-ON Time	t_{on}	See specified Test Circuit.		50		ns
Storage Time	t_{stg}	"		(60)70		ns
Fall Time	t_f	"		200		ns

* The 2SB559/2SD439 are classified by h_{FE} at 500mA.

60	D	120	100	E	200	160	F	320
----	---	-----	-----	---	-----	-----	---	-----

Case Outline 2009A

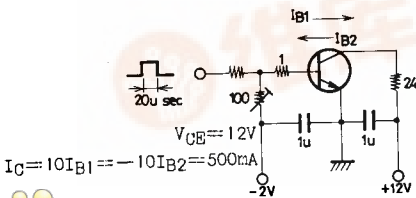
(unit:mm)



JEDEC: TO-126

B: Base
C: Collector
E: Emitter

Switching Time Test Circuit



(For PNP, the polarity is reversed.)

For details, refer to the description of the 2SD439.

