



## INTEGRATED CONNECTOR MODULES

### 0816-1X1T-80 Gigabit Power over Ethernet Single Port MagJack®

#### ELECTRICAL CHARACTERISTICS @ 25°C

##### TURNS RATIO

TP1	1CT : 1CT ±2%
TP2	1CT : 1CT ±2%
TP3	1CT : 1CT ±2%
TP4	1CT : 1CT ±2%

##### □CL @ 100kHz/100mVRMS

8mA DC BIAS	350µH MIN.
-------------	------------

##### INS. LOSS

0.1MHz TO 1MHz	-1.1 dB MAX
1MHz TO 65MHz	-0.5 dB MAX
65MHz TO 100MHz	-0.8 dB MAX
100MHz TO 125MHz	-1.2 dB MAX

##### RET. LOSS (MIN)

0.5MHz-40MHz	-18 dB
40MHz-100MHz	-12+20LOG<f/80MHz> dB

##### CM TO CM REJ

100kHz - 100MHz	-30 dB MIN
-----------------	------------

##### CM TO DM REJ

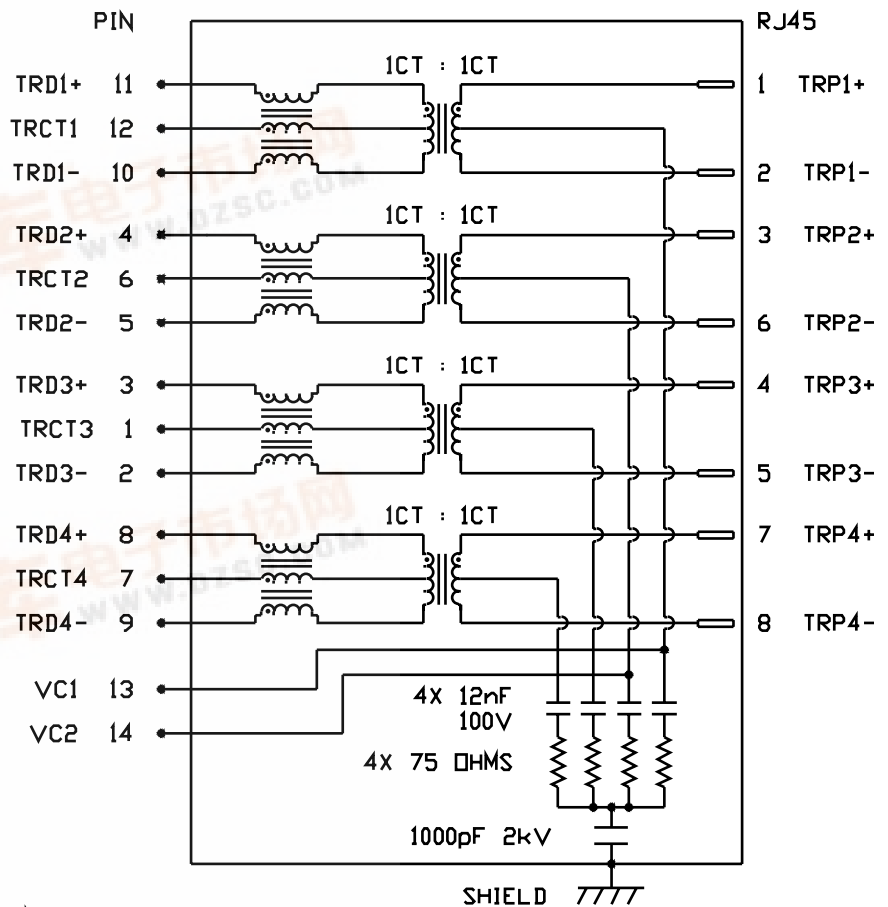
100kHz - 100MHz	-35 dB MIN
-----------------	------------

##### HIPOT (Isolation Voltage):

2250 Vrms  
100% OF PRODUCT TESTED IN PRODUCTION

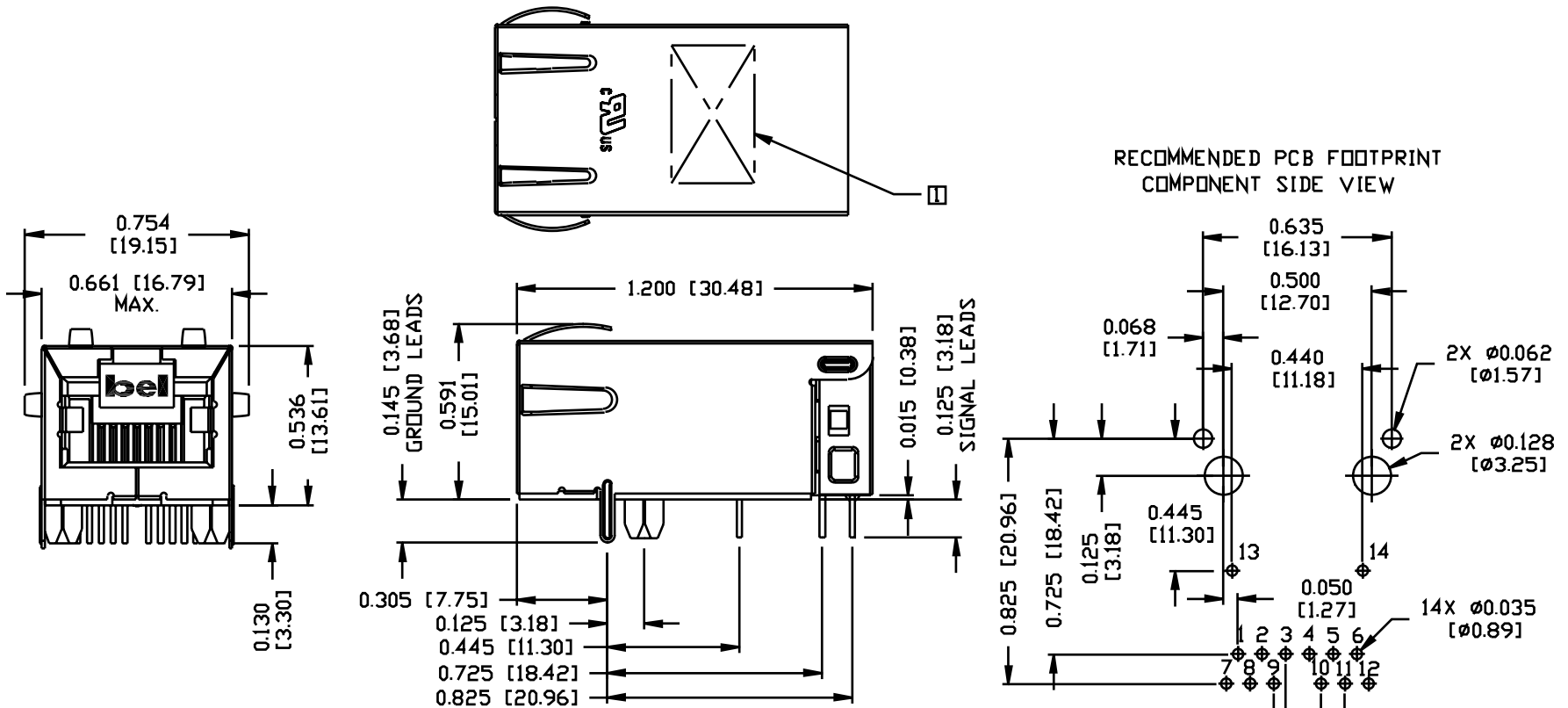
##### BALANCED DC LINE CURRENT

350 mA MAX. @ 57 VDC CONTINUOUS  
500 mA MAX. @ 57 VDC FOR 200 MILLISECONDS



# INTEGRATED CONNECTOR MODULES

## 0816-1X1T-80 Gigabit Power over Ethernet Single Port MagJack®



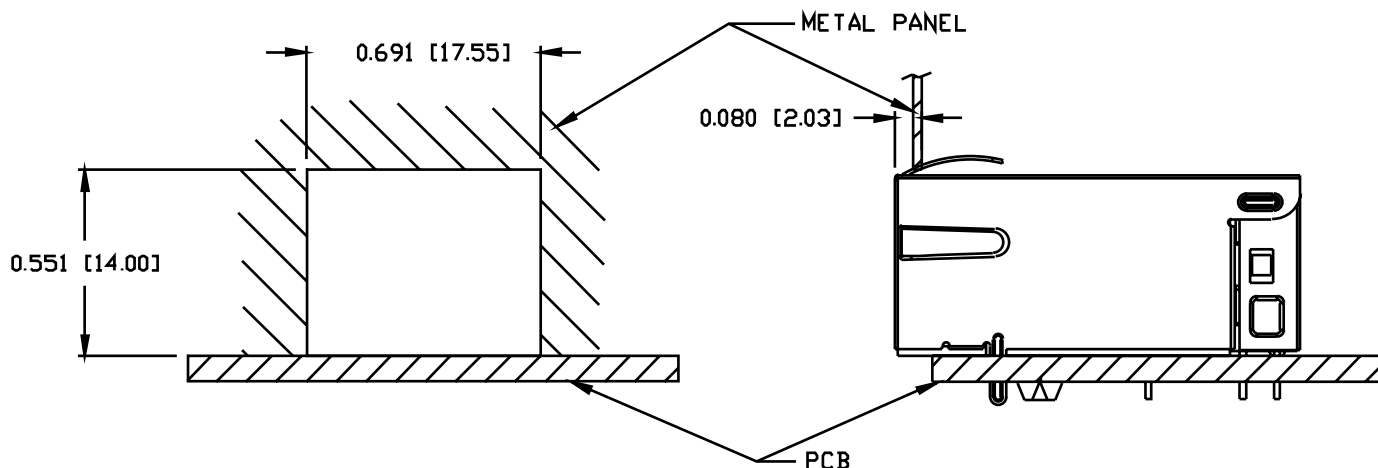
**NOTES:**

- PLASTIC HOUSING: THERMOPLASTIC PA 4/6
- FLAMMABILITY RATING UL 94V-0
- CONTACTS: 50 MICRO-INCH HARD GOLD PLATING
- OUTPUT PINS: TIN-COATED COPPER WIRE, DIA 0.016 INCH AND 0.018 INCH.
- SOLDERABILITY: PER MIL STD. 202, METHOD 208.
- METAL SHIELD: TIN/LEAD PLATED ON COPPER ALLOY.
- [ ] MARK PART WITH MFG LOGO, MFG NAME, PART NUMBER, AND DATE CODE.

UL US UL RECOGNIZED - FILE #E196366 AND E169987.

**INTEGRATED CONNECTOR MODULES**  
**0816-1X1T-80 Gigabit Power over Ethernet Single Port MagJack®**

SUGGESTED PANEL OPENING



**NOTES:**

THE DISTANCE OF PANEL INSIDE SURFACE RELATIVE TO FRONT SURFACE OF PART IS ONLY A SUGGESTION. IN CASE THIS DISTANCE IS DIFFERENT, THE REQUIRED PANEL OPENING DIMENSIONS CHANGE ACCORDINGLY.

**PACKING INFORMATION**

PACKING TRAY : 0200-9999-F1 (TOP)  
 0200-9999-F2 (BOTTOM)

PACKING QUANTITY : 40 PCS FINISHED GOODS PER TRAY  
 10 TRAY (400 PCS FINISHED GOODS) PER CARTON BOX

NOTE : CARDBOARDS ARE PLACED BETWEEN LAYERS OF PACKING TRAY INSIDE CARTON BOX  
 (INCLUDE THE UPPERMOST AND LOWERMOST TRAY)