

CBG-A Series

WIDEBAND DIRECTIONAL COUPLER

10 to 1000 MHz / Low 0.2" Profile / Minimal Size and Weight / Surface Mount Package



PRINCIPAL SPECIFICATIONS

Model Number	Coupling Frequency			Bandwidth MHz
	Coupling, dB	Tolerance, dB	Sensitivity, dB	
CBG-11A-500	11	±1	±1	10 to 1000
CBG-20A-500	20	±1	±1	10 to 1000

Coupling Value is referred to Input Port

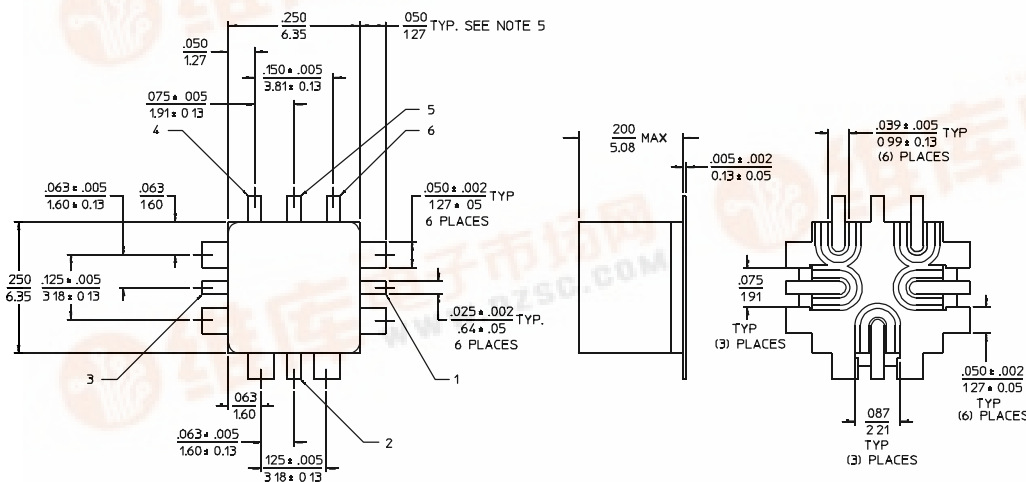
GENERAL SPECIFICATIONS

Insertion Loss (above Coupling Value):
 10 to 500 MHz: 1 dB max.
 500 to 1000 MHz: 1.5 dB max.
 Directivity: 10 to 300 MHz: 20 dB min.
 300 to 800 MHz: 15 dB min.
 800 to 1000 MHz: 13 dB min.
 Impedance: 50 Ω nom.
 VSWR: 10 to 500 MHz: 1.5:1 max.
 500 to 1000 MHz: 1.8:1 max.
 CW Input: 1 W max.
 Weight, Nominal: 0.1 oz. (2.8 g)
 Operating Temperature : -55° to +85°C

General Notes:

1. Directional couplers find applications in monitoring incident and reflected power, sampling for control loops as well as signal injection in BITE systems.
2. The 0.25" square surface mount package used in the CBG-A series has been designed for 50 Ω coplanar systems to optimize RF performance while still achieving the small size and low profile of surface mount devices. The Kovar input leads are designed to suit a variety of mounting situations simply by cutting them to the desired length.

Surface Mount A-Package Outline



PIN NO.	FUNCTION
1	OUTPUT
2	INPUT
3	COUPLED PORT
4	NOT USED
5	NOT USED
6	NOT USED

- NOTES:
1. Tolerance on 3 place decimals ±.010(.25) except as noted.
 2. Max. is largest dimension allowed.
 2. Dimensions in inches over millimeters.
 4. Untrimmed Lead Length 0.25" (6.35) nominal.
 5. All unnumbered tabs are ground.

