

**Inchange Semiconductor**

**Product Specification**

**Silicon NPN Power Transistors**

**2SC1141**

**DESCRIPTION**

- With TO-3 package
- High voltage ,high speed

**APPLICATIONS**

- Converters
- Inverters
- Switching regulators
- Motor controls

**PINNING (See Fig.2)**

PIN	DESCRIPTION
1	Base
2	Emitter
3	Collector

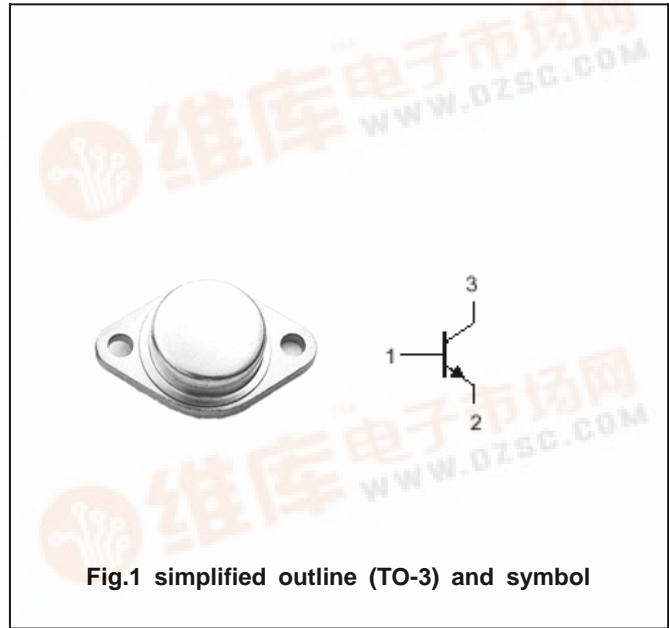


Fig.1 simplified outline (TO-3) and symbol

**Absolute maximum ratings(Ta=°C)**

SYMBOL	PARAMETER	CONDITIONS	MAX	UNIT
V <sub>CBO</sub>	Collector-base voltage	Open emitter	600	V
V <sub>CEO</sub>	Collector-emitter voltage	Open base	300	V
V <sub>EBO</sub>	Emitter-base voltage	Open collector	7	V
I <sub>C</sub>	Collector current		15	A
P <sub>T</sub>	Total power dissipation	T <sub>mb</sub> =25°C	150	W
T <sub>j</sub>	Junction temperature		200	°C
T <sub>stg</sub>	Storage temperature		-65~200	°C

**THERMAL CHARACTERISTICS**

SYMBOL	PARAMETER	VALUE	UNIT
R <sub>th j-mb</sub>	Thermal resistance from junction to mounting base	1.0	°C/W

## Silicon NPN Power Transistors

## 2SC1141

## CHARACTERISTICS

T<sub>j</sub>=25°C unless otherwise specified

SYMBOL	PARAMETER	CONDITIONS	MIN	TYP.	MAX	UNIT
V <sub>CEO(SUS)</sub>	Collector-emitter sustaining voltage	I <sub>C</sub> =0.1A ; I <sub>B</sub> =0	300			V
V <sub>(BR)EBO</sub>	Emitter-base breakdown voltage	I <sub>E</sub> =1mA ; I <sub>C</sub> =0	7			V
V <sub>CEsat</sub>	Collector-emitter saturation voltage	I <sub>C</sub> =8A ; I <sub>B</sub> =1.6A			1.5	V
V <sub>BEsat</sub>	Base-emitter saturation voltage	I <sub>C</sub> =8A ; I <sub>B</sub> =1.6A			1.6	V
I <sub>CBO</sub>	Collector cut-off current	V <sub>CB</sub> =600V ; I <sub>E</sub> =0			0.1	mA
I <sub>EBO</sub>	Emitter cut-off current	V <sub>EB</sub> =7V ; I <sub>C</sub> =0			0.1	mA
h <sub>FE-1</sub>	DC current gain	I <sub>C</sub> =1A ; V <sub>CE</sub> =5V	15		50	
h <sub>FE-2</sub>	DC current gain	I <sub>C</sub> =7.5A ; V <sub>CE</sub> =5V	10		25	
f <sub>T</sub>	Transition frequency	I <sub>C</sub> =1A ; V <sub>CE</sub> =5V		10		MHz

Silicon NPN Power Transistors

2SC1141

PACKAGE OUTLINE

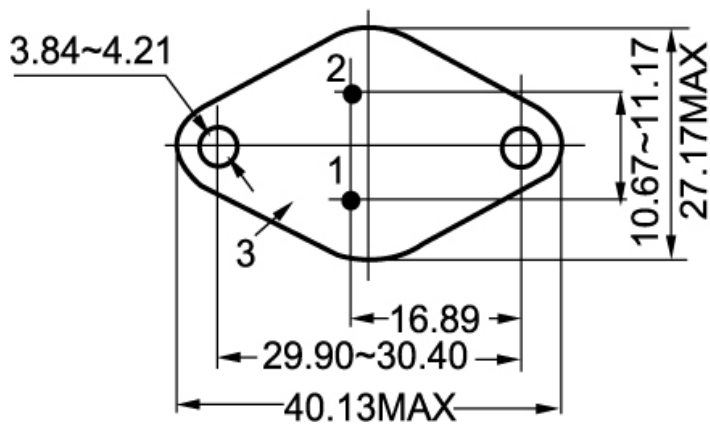
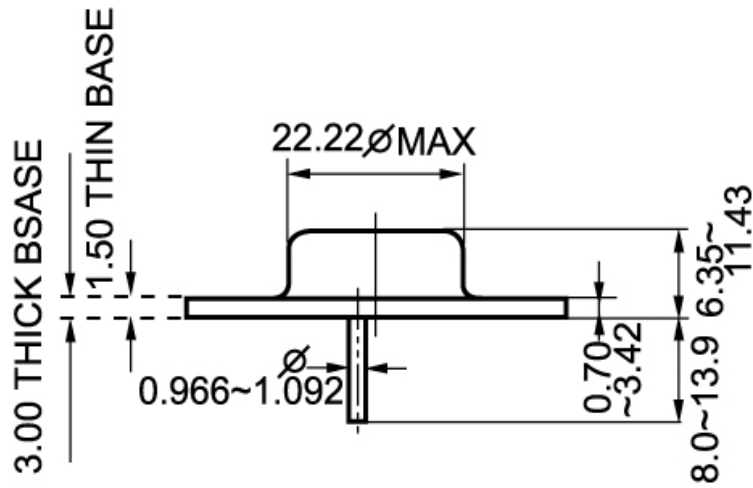


Fig.2 Outline dimensions