

SERIES 70

.325" PCB Barrier Terminal Strip

Description

The series 70 PCB terminal strip is one of the most widely used terminal block products today. The .325" terminal pitch and the #6-32 screw offers the user excellent density and durability characteristics.

The terminal block is highly versatile, with options such as tri-barrier construction, true captive screws and a wide variety of terminal styles.

Made in the USA, all Beau terminal blocks embody the highest quality standards in the industry-using the finest materials and world class manufacturing processes. They meet or exceed all applicable industry standards.

Features

- **Strength and density**, the .325" pitch series 70 is our smallest product to use the #6-32 screw.
- **Robust and durable**, screw terminals are ultrasonically welded into the thermoplastic insulator, eliminating terminal twisting and associated solder joint failure.
- **Wide array of options**. Our series 70 product options can fulfill virtually any application demand. Only Beau gives you a captivated screw rated to a minimum 6 in-lbs. of back out torque.



PRODUCT RATINGS

#6-32 PAN HEAD SCREW

UL	Class B	15 Amps @ 300 V 14 AWG
	Class C	15 Amps @ 150 V 14 AWG
CSA	Class B	15 Amps @ 150 V 14 AWG
	Class D	10 Amps @ 300 V 14 AWG

#6-32 WIRE CLAMP SCREW

UL	Class B	20 Amps @ 300 V 12 AWG
	Class C	20 Amps @ 150 V 12 AWG
CSA	Class B	15 Amps @ 150 V 14 AWG
	Class D	10 Amps @ 300 V 14 AWG

APPROVALS

UL	File No. E48521
	Guide No. XCFR2
CSA	File No. 025562

TECHNICAL SPECIFICATIONS

ELECTRICAL

DWV	8500 VDC
IR	>5000 Megohms

MECHANICAL

Tightening torque	12 in-lbs.
Maximum torque	13 in-lbs.
Wire strip length	5/16"
Wire range	12 to 22 AWG

ENVIRONMENTAL

Continuous Use Temp	
RTI electrical	110°C
RTI mechanical w/o impact	110°C

MATERIALS

Insulator	Thermoplastic, UL94V-0, black
Terminal	Brass, tin-lead plate
Screws	#6-32, phillips/slotted, steel, zinc chromate plate

OPTIONS

-45	Slotted screw
-47	Screws up, wire ready
-49	Brass, phillips/slotted screw
-50	Clamp washer, phillips/slotted screw
-58	No screws, barrier only
-59	Screws supplied unassembled
-88	Flat washer, posi-drive/slotted, 3,5mm
-C	No mounting ends
-P	.040" standoff pads
-T	Captive screws
-V	130°C insulator

HOW TO ORDER

7	0	X	X	X	X
SERIES	TERMINAL STYLE	NO. OF POLES	OPTIONS		
	1 5 7 8	2 to 30	(Dash #s above and opposite page)		

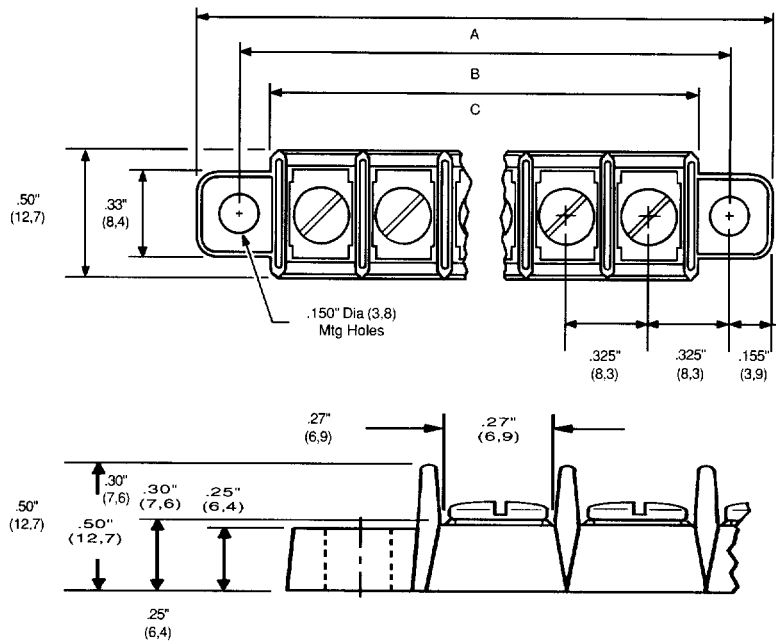
*Consult factory for combinations of screw options.

BEAU

INTERCONNECT

Gilford, NH 03246-6600
 Phone (603) 524-5101
 Fax (603) 524-1627
 Internet www.beauint.com
 Division of Axsys Technologies

SERIES 70

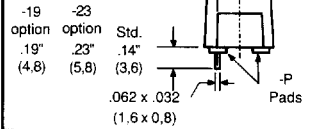


TERMINAL STYLES

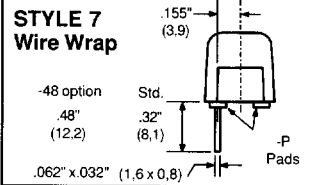
STYLE 1
No PC
Terminal



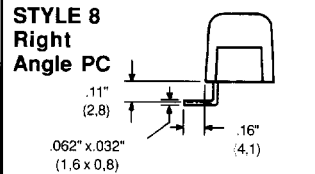
STYLE 5
PC



STYLE 7
Wire Wrap



STYLE 8
Right
Angle PC



No. of Circuits	A		B		C	
	in.	mm	in.	mm	in.	mm
2	1.29	32.8	.98	24.9	.73	18.5
3	1.61	40.9	1.30	33.0	1.06	26.9
4	1.94	49.3	1.63	41.4	1.38	35.1
5	2.26	57.4	1.95	49.5	1.70	43.2
6	2.59	65.8	2.28	57.9	2.03	51.2
7	2.91	73.9	2.60	66.0	2.35	59.7
8	3.24	82.3	2.93	74.4	2.68	68.1
9	3.56	90.4	3.25	82.6	3.00	76.2
10	3.89	98.8	3.58	90.9	3.33	84.6
11	4.21	107	3.90	99.1	3.65	92.7
12	4.54	115	4.23	107	3.98	101
13	4.86	123	4.55	116	4.30	109
14	5.19	132	4.88	124	4.63	118
15	5.51	140	5.20	132	4.95	126
16	5.84	148	5.53	140	5.28	134
17	6.16	156	5.85	149	5.60	142
18	6.49	165	6.18	157	5.93	151
19	6.81	173	6.50	165	6.25	159
20	7.14	181	6.83	173	6.58	167
21	7.46	189	7.15	182	6.90	175
22	7.79	198	7.48	190	7.23	184
23	8.11	206	7.80	198	7.55	192
24	8.44	214	8.13	207	7.88	200
25	8.76	223	8.45	215	8.20	208
26	9.09	231	8.78	223	8.53	217
27	9.41	239	9.10	231	8.85	225
28	9.74	247	9.43	240	9.18	233
29	10.06	256	9.75	248	9.50	241
30	10.39	263	10.08	256	9.83	250