

FEATURES AND SPECIFICATIONS



SFP Ganged Cages

Meet higher density packaging requirements with Molex's broad offering of SFP Ganged Cages

The SFP Ganged cages are multi-port cages, developed to meet the market need for higher packaging density. The result is greater PCB space savings in belly-to-belly configurations versus single cage applications.

The Ganged Cages are tooled in 1-by-2, 1-by-4, 1-by-5 and 1-by-6 versions with press-fit and solder-post tails.

The rugged metal cage design is based on the Small Form-factor transceiver Multi-Source Agreement. They also incorporate a compliant, elastomeric 360° gasket and multiple ground pin locations for EMI containment.

1-by-2 Series 74722

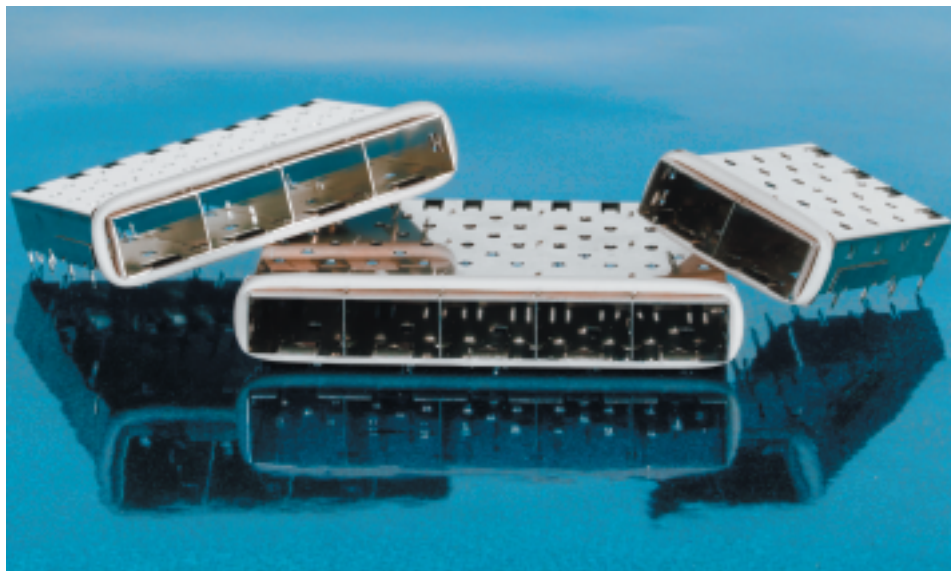
1-by-4 Series 73927

1-by-5 Series 74723

1-by-6 Series 74747

Features and Benefits

- Small form-factor design offers significant PCB width savings over the single cage solution
- 360° conductive elastomeric gasket and multiple ground pin locations provide advanced EMI (Electro Magnetic Interference) shielding to the bezel
- Press-fit tails accommodate belly-to-belly applications ensure better use of PCB real estate
- Accepts copper and optical SFP modules for Fibre Channel and Gigabit Ethernet applications to provide module versatility



1-by-2, 1-by-4 and 1-by-5 shown

SPECIFICATIONS

Reference Information

Packaging: Tray

Physical

Housing: Nickel-Silver Alloy

PCB Thickness:

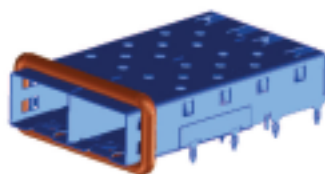
Press-fit: 1.57mm (.062") Single Side

3.00mm (.118") Double Side

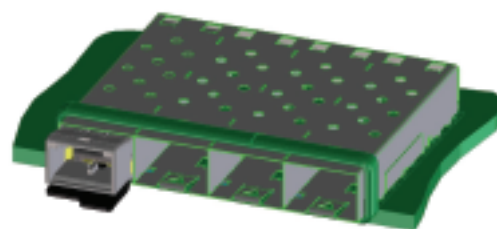
Solder Post: 1.57mm (.062") Single Side

3.81mm (.150") Double Side

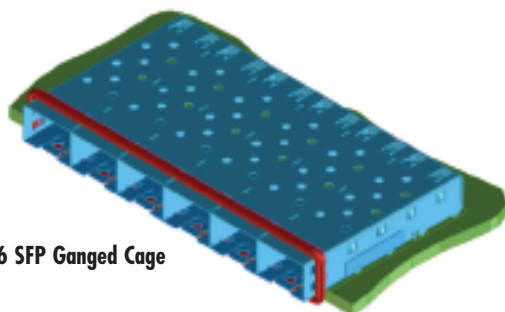
Operating Temperature: -55 to +105° C



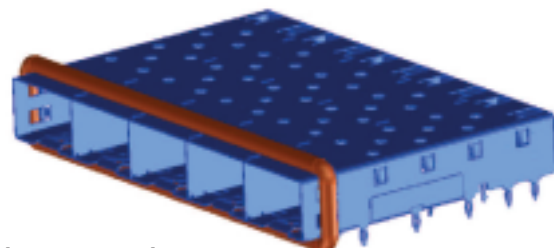
1-by-2 SFP Ganged Cage



1-by-4 SFP Ganged Cage



1-by-6 SFP Ganged Cage



1-by-5 SFP Ganged Cage

APPLICATIONS

- Networking Equipment
 - Switches, routers, storage racks
- Data Communication Applications
 - High-end servers



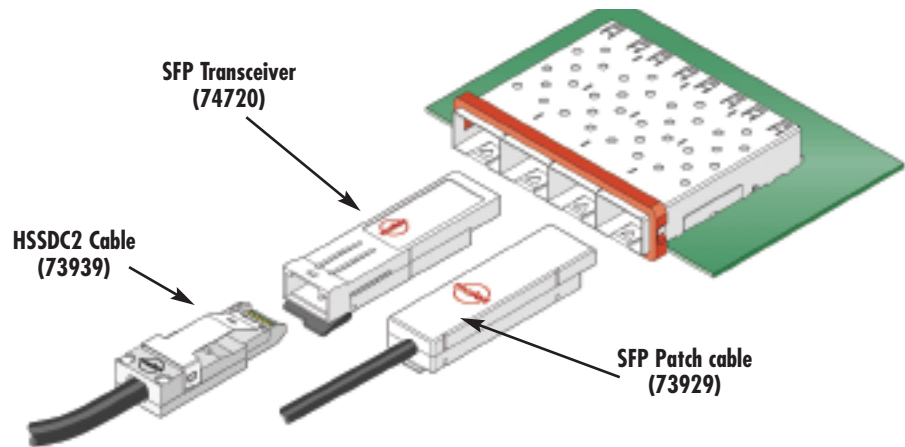
SFP Ganged Cages

1-by-2 Series 74722

1-by-4 Series 73927

1-by-5 Series 74723

1-by-6 Series 74747



COMPLIMENTARY PRODUCTS

- SFP 2-by-1 Stacked Multi-Port Connector with Lightpipes (75310 Series)
- SFP Cage and Connector Component Kit (75082 Series)
- Single and Ganged SFP Cages (73927, 74722, 74723, 74747 Series)
- 20 Circuit, Right Angle, SMT Connector (74441 Series)
- 1000Base-T SFP Transceiver (74741 Series)
- HSSDC2 Plug-to-Plug Copper Cable Assembly (73939 Series)
- HSSDC2 Module, Loopback Adapter, Dust Plug (74720 Series)
- Copper Patch Cable Assembly (73929 Series)
- LC Duplex Cable Assembly (86025 Series)

ORDERING INFORMATION

Order No.	Description	Mounting
73927-0415	1-by-4 SFP Ganged Cage	Press-fit
73927-0412	1-by-4 SFP Ganged Cage	Solder-post
74722-0001	1-by-2 SFP Ganged Cage	Press-fit
74723-0001	1-by-5 SFP Ganged Cage	Press-fit
74747-0001	1-by-6 SFP Ganged Cage	Press-fit

Americas Headquarters
 Lisle, Illinois 60532 U.S.A.
 1-800-78MOLEX
 amerinfo@molex.com

Far East North Headquarters
 Yamato, Kanagawa, Japan
 81-462-65-2324
 feninfo@molex.com

Far East South Headquarters
 Jurong, Singapore
 65-6-268-6868
 fesinfo@molex.com

European Headquarters
 Munich, Germany
 49-89-413092-0
 eurinfo@molex.com

Corporate Headquarters
 2222 Wellington Ct.
 Lisle, IL 60532 U.S.A.
 630-969-4550
 Fax: 630-969-1352

Visit our Web site at <http://www.molex.com/product/io/sfpcages.html>