



Pulse Transformers

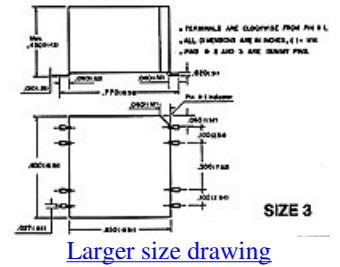
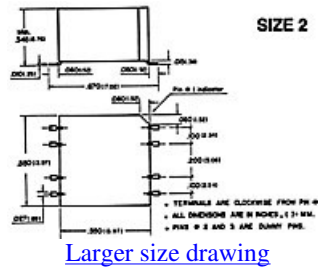
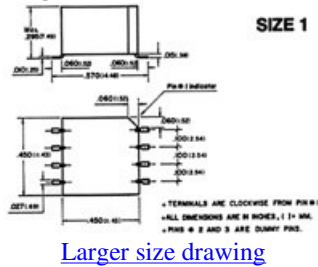
SURFACE MOUNT

PICO surface mount units utilize materials and methods to withstand extreme temperatures of vapor phase, I.R., and other reflow procedures without degradation of electrical or mechanical characteristics.

Specifications

- Units manufactured to MIL-PRF-21038.
- **DIELECTRIC STRENGTH:** All units tested at 500 V RMS.
- **OPERATING TEMPERATURE:** -55° C to +130° C
- **INSULATION RESISTANCE:** Greater than 10,000 Megohms at 700 V DC.
- **TERMINALS:** Meet solderability per MIL-STD-202, Method 208.
- **THERMAL SHOCK:** 25 Cycles, Method 107, MIL-STD-202, Test Condition -55 ° C to +130° C.
- **WEIGHT SIZE:** 1-2.5 Grams; 2-4.5 Grams; 3-8.0 Grams

Mechanical Drawings:



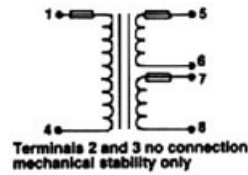
| SIZE 1 | | | | | | | | | | | |
|-------------|------------------------|---------------|----------------------------------|------------|--|-------|-------|---------------------------------------|------------|--------------------------------------|---------------------|
| PICO PART # | TURNS RATIO TOLER. ±5% | Lm TYPICAL μH | LEAKAGE IND. VALUE IN μH TYPICAL | | WINDING RESISTANCE MAX VALUE IN OHMS (+/- 25%) | | | TYPICAL INTER-WINDING CAP VALUE IN pF | | E.T. RATING VOLT - μSEC MAX. PRIMARY | PRICE (1-9) (US \$) |
| | | | LL (N1-N2) | LL (N1-N3) | R(N1) | R(N2) | R(N3) | C1 (N1-N2) | C2 (N1-N3) | | |
| 75005 | 1:1:1 | 150 | .100 | .250 | .059 | .068 | .077 | 25 | 12 | 10 | 34.56 |
| 75010 | 1:1:1 | 600 | .400 | 1.1 | .15 | .18 | .21 | 25 | 12 | 20 | 34.56 |
| 75015 | 1:1:1 | 1300 | .900 | 2.5 | .45 | .51 | .58 | 25 | 12 | 30 | 34.56 |
| 75020 | 1:1:1 | 2400 | 1.6 | 4.2 | 1.14 | 1.27 | 1.39 | 25 | 12 | 40 | 34.56 |
| 75025 | 1:1:1 | 3700 | 3.0 | 6.5 | 2.0 | 2.3 | 2.5 | 25 | 12 | 50 | 34.56 |
| 75030 | 2:1:1 | 150 | .250 | .450 | .065 | .019 | .022 | 25 | 12 | 10 | 34.56 |
| 75035 | 2:1:1 | 600 | 1.0 | 1.5 | .15 | .074 | .087 | 25 | 12 | 20 | 34.56 |
| 75040 | 2:1:1 | 1300 | 1.5 | 3.5 | .45 | .10 | .13 | 25 | 12 | 30 | 34.56 |
| 75045 | 2:1:1 | 2400 | 2.2 | 6.0 | 1.14 | .17 | .20 | 25 | 12 | 40 | 34.56 |
| 75050 | 2:1:1 | 3700 | 3.4 | 9.0 | 1.95 | .28 | .33 | 25 | 12 | 50 | 34.56 |

| SIZE 1 | | | | | | | | | | | |
|-------------|------------------------|---------------|----------------------------------|------------|--|-------|-------|---------------------------------------|------------|--------------------------------------|---------------------|
| PICO PART # | TURNS RATIO TOLER. ±5% | Lm TYPICAL μH | LEAKAGE IND. VALUE IN μH TYPICAL | | WINDING RESISTANCE MAX VALUE IN OHMS (+/- 25%) | | | TYPICAL INTER-WINDING CAP VALUE IN pF | | E.T. RATING VOLT - μSEC MAX. PRIMARY | PRICE (1-9) (US \$) |
| | | | LL (N1-N2) | LL (N1-N3) | R(N1) | R(N2) | R(N3) | C1 (N1-N2) | C2 (N1-N3) | | |
| 75055 | 3:1:1 | 200 | .617 | 1.0 | .074 | .012 | .014 | 25 | 12 | 12 | 34.56 |
| 75060 | 3:1:1 | 800 | 1.2 | 1.5 | .18 | .035 | .040 | 25 | 12 | 24 | 34.56 |
| 75065 | 3:1:1 | 1800 | 2.5 | 5.0 | .37 | .15 | .16 | 25 | 12 | 36 | 34.56 |
| 75070 | 3:1:1 | 3200 | 4.5 | 10.0 | .62 | .25 | .28 | 25 | 12 | 48 | 34.56 |
| 75075 | 3:1:1 | 5300 | 7.0 | 15.0 | 1.28 | .25 | .28 | 25 | 12 | 60 | 34.56 |
| 75080 | 3:3:1 | 200 | 200 | 1.0 | .075 | .094 | .018 | 25 | 12 | 12 | 34.56 |
| 75085 | 3:3:1 | 800 | 1.0 | 1.5 | .18 | .22 | .042 | 25 | 12 | 24 | 34.56 |
| 75090 | 3:3:1 | 1800 | 2.5 | 5.0 | .60 | .78 | .30 | 25 | 12 | 36 | 34.56 |
| 75095 | 3:3:1 | 3200 | 4.5 | 10.0 | .95 | 1.18 | .55 | 25 | 12 | 48 | 34.56 |
| 75100 | 3:3:1 | 5300 | 7.0 | 15.0 | 1.50 | 1.89 | .72 | 25 | 12 | 60 | 34.56 |
| 75105 | 4:2:1 | 200 | .506 | 2.0 | .047 | .030 | .016 | 25 | 12 | 12 | 34.56 |
| 75110 | 4:2:1 | 800 | 1.5 | 3.0 | .18 | .071 | .041 | 25 | 12 | 24 | 34.56 |
| 75115 | 4:2:1 | 1800 | 3.0 | 5.5 | .46 | .28 | .16 | 25 | 12 | 36 | 34.56 |
| 75120 | 4:2:1 | 3200 | 5.5 | 10.0 | .77 | .46 | .25 | 25 | 12 | 48 | 34.56 |
| 75125 | 4:2:1 | 5300 | 8.0 | 15.0 | 1.23 | .75 | .41 | 25 | 12 | 60 | 34.56 |

| SIZE 2 | | | | | | | | | | | |
|-------------|------------------------|---------------|----------------------------------|------------|--|-------|-------|---------------------------------------|------------|--------------------------------------|---------------------|
| PICO PART # | TURNS RATIO TOLER. ±5% | Lm TYPICAL μH | LEAKAGE IND. VALUE IN μH TYPICAL | | WINDING RESISTANCE MAX VALUE IN OHMS (+/- 25%) | | | TYPICAL INTER-WINDING CAP VALUE IN pF | | E.T. RATING VOLT - μSEC MAX. PRIMARY | PRICE (1-9) (US \$) |
| | | | LL (N1-N2) | LL (N1-N3) | R(N1) | R(N2) | R(N3) | C1 (N1-N2) | C2 (N1-N3) | | |
| 75210 | 1:1:1 | 250 | .350 | .712 | .036 | .042 | .048 | 35 | 18 | 16 | 34.56 |
| 75215 | 1:1:1 | 1000 | .650 | 1.2 | .12 | .15 | .17 | 35 | 18 | 32 | 34.56 |
| 75220 | 1:1:1 | 2250 | 1.5 | 3.0 | .28 | .32 | .37 | 35 | 18 | 48 | 34.56 |
| 75225 | 1:1:1 | 4000 | 2.5 | 5.0 | .59 | .66 | .74 | 35 | 18 | 65 | 34.56 |
| 75230 | 1:1:1 | 6200 | 4.0 | 8.0 | 1.18 | 1.34 | 1.50 | 35 | 18 | 80 | 34.56 |
| 75235 | 2:1:1 | 250 | .400 | .815 | .036 | .01 | .012 | 35 | 18 | 16 | 34.56 |
| 75240 | 2:1:1 | 1000 | .800 | 1.6 | .12 | .044 | .049 | 35 | 18 | 32 | 34.56 |
| 75245 | 2:1:1 | 2250 | 1.8 | 3.6 | .28 | .11 | .13 | 35 | 18 | 48 | 34.56 |
| 75250 | 2:1:1 | 4000 | 3.2 | 6.4 | .59 | .17 | .20 | 35 | 18 | 65 | 34.56 |
| 75255 | 2:1:1 | 6200 | 5.0 | 10.0 | 1.18 | .26 | .31 | 35 | 18 | 80 | 34.56 |
| 75260 | 3:1:1 | 350 | .400 | .900 | .037 | .019 | .021 | 35 | 18 | 19 | 34.56 |
| 75265 | 3:1:1 | 1400 | 1.1 | 2.2 | .15 | .035 | .039 | 35 | 18 | 38 | 34.56 |
| 75270 | 3:1:1 | 3000 | 2.4 | 5.0 | .42 | .062 | .068 | 35 | 18 | 57 | 34.56 |
| 75275 | 3:1:1 | 5500 | 4.2 | 8.0 | .75 | .23 | .24 | 35 | 18 | 76 | 34.56 |
| 75280 | 3:1:1 | 9000 | 6.5 | 10.0 | .96 | .38 | .40 | 35 | 18 | 95 | 34.56 |
| 75285 | 3:3:1 | 350 | .450 | 1.0 | .057 | .072 | .028 | 35 | 18 | 19 | 34.56 |
| 75290 | 3:3:1 | 1400 | 1.2 | 2.6 | .15 | .17 | .065 | 35 | 18 | 38 | 34.56 |
| 75295 | 3:3:1 | 3000 | 2.5 | 5.0 | .42 | .48 | .089 | 35 | 18 | 57 | 34.56 |
| 75300 | 3:3:1 | 5500 | 4.5 | 9.0 | .94 | 1.14 | .43 | 35 | 18 | 76 | 34.56 |

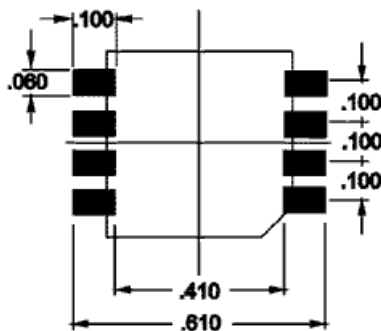
| | | | | | | | | | | | |
|-------|-------|------|------|------|------|------|------|----|----|----|-------|
| 75305 | 3:3:1 | 9000 | 7.0 | 14.0 | 1.54 | 1.74 | .64 | 35 | 18 | 95 | 34.56 |
| 75310 | 4:2:1 | 350 | .700 | 1.64 | .040 | .023 | .014 | 35 | 18 | 19 | 34.56 |
| 75315 | 4:2:1 | 1400 | 1.3 | 2.7 | .12 | .067 | .035 | 35 | 18 | 38 | 34.56 |
| 75320 | 4:2:1 | 3000 | 2.7 | 5.5 | .42 | .12 | .070 | 35 | 18 | 57 | 34.56 |
| 75325 | 4:2:1 | 5500 | 4.8 | 9.0 | .94 | .27 | .15 | 35 | 18 | 76 | 34.56 |
| 75330 | 4:2:1 | 9000 | 7.5 | 15.0 | 1.53 | .35 | .19 | 35 | 18 | 95 | 34.56 |

| SIZE 3 | | | | | | | | | | | |
|-------------|------------------------|---------------|----------------------------------|------------|--|-------|-------|---------------------------------------|------------|--------------------------------------|---------------------|
| PICO PART # | TURNS RATIO TOLER. ±5% | Lm TYPICAL μH | LEAKAGE IND. VALUE IN μH TYPICAL | | WINDING RESISTANCE MAX VALUE IN OHMS (+/- 25%) | | | TYPICAL INTER-WINDING CAP VALUE IN pF | | E.T. RATING VOLT - μSEC MAX. PRIMARY | PRICE (1-9) (US \$) |
| | | | LL (N1-N2) | LL (N1-N3) | R(N1) | R(N2) | R(N3) | C1 (N1-N2) | C2 (N1-N3) | | |
| 75515 | 1:1:1 | 300 | .300 | .400 | .035 | .040 | .045 | 45 | 25 | 25 | 34.56 |
| 75520 | 1:1:1 | 1200 | 1.25 | 1.9 | .095 | .11 | .13 | 45 | 25 | 50 | 34.56 |
| 75525 | 1:1:1 | 2700 | 1.75 | 4.2 | .22 | .26 | .29 | 45 | 25 | 75 | 34.56 |
| 75530 | 1:1:1 | 4800 | 3.0 | 7.3 | .46 | .53 | .60 | 45 | 25 | 100 | 34.56 |
| 75535 | 1:1:1 | 7500 | 4.6 | 11.4 | .78 | .96 | 1.15 | 45 | 25 | 125 | 34.56 |
| 75540 | 2:1:1 | 300 | .514 | .630 | .035 | .013 | .014 | 45 | 25 | 25 | 34.56 |
| 75545 | 2:1:1 | 1200 | .900 | 1.7 | .095 | .043 | .047 | 45 | 25 | 50 | 34.56 |
| 75550 | 2:1:1 | 2700 | 2.0 | 3.7 | .22 | .10 | .12 | 45 | 25 | 75 | 34.56 |
| 75555 | 2:1:1 | 4800 | 3.0 | 6.5 | .46 | .17 | .19 | 45 | 25 | 100 | 34.56 |
| 75560 | 2:1:1 | 7500 | 4.88 | 10.0 | .80 | .28 | .34 | 45 | 25 | 125 | 34.56 |
| 75565 | 3:1:1 | 400 | .686 | .800 | .042 | .010 | .012 | 45 | 25 | 30 | 34.56 |
| 75570 | 3:1:1 | 1600 | 1.25 | 3.0 | .12 | .035 | .038 | 45 | 25 | 60 | 34.56 |
| 75575 | 3:1:1 | 3600 | 2.75 | 6.5 | .33 | .062 | .068 | 45 | 25 | 90 | 34.56 |
| 75580 | 3:1:1 | 6400 | 4.6 | 1.20 | .58 | .14 | .15 | 45 | 25 | 120 | 34.56 |
| 75585 | 3:1:1 | 10,000 | 7.2 | 18.0 | 1.16 | .12 | .14 | 45 | 25 | 150 | 34.56 |
| 75590 | 3:3:1 | 400 | .400 | 1.02 | .054 | .060 | .011 | 45 | 25 | 30 | 34.56 |
| 75595 | 3:3:1 | 1600 | 1.25 | 1.5 | .12 | .14 | .040 | 45 | 25 | 60 | 34.56 |
| 75600 | 3:3:1 | 3600 | 3.0 | 2.9 | .33 | .38 | .070 | 45 | 25 | 90 | 34.56 |
| 75605 | 3:3:1 | 6400 | 5.3 | 5.0 | .58 | .73 | .18 | 45 | 25 | 120 | 34.56 |
| 75610 | 3:3:1 | 10,000 | 8.2 | 7.8 | 1.16 | 1.43 | .14 | 45 | 25 | 150 | 34.56 |
| 75615 | 4:2:1 | 400 | .580 | 1.12 | .042 | .015 | .009 | 45 | 25 | 30 | 34.56 |
| 75620 | 4:2:1 | 1600 | 1.2 | 3.0 | .12 | .052 | .028 | 45 | 25 | 60 | 34.56 |
| 75625 | 4:2:1 | 3600 | 2.75 | 7.0 | .33 | .15 | .084 | 45 | 25 | 90 | 34.56 |
| 75630 | 4:2:1 | 6400 | 4.6 | 12.0 | .59 | .15 | .082 | 45 | 25 | 120 | 34.56 |
| 75635 | 4:2:1 | 10,000 | 7.1 | 19.6 | 1.16 | .27 | .15 | 45 | 25 | 150 | 34.56 |

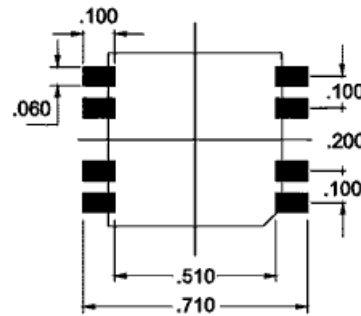


[Click Here For Plug-in Version of 75000 Series](#)

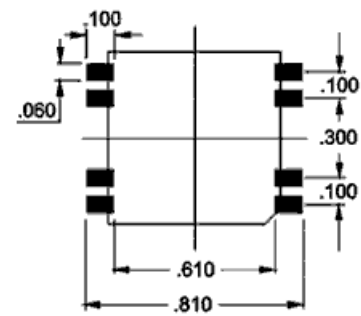
RECOMMENDED LAND PATTERN DIMENSIONS PICO 75000 Series Size 1



RECOMMENDED LAND PATTERN DIMENSIONS PICO 75000 Series Size 2



RECOMMENDED LAND PATTERN DIMENSIONS PICO 75000 Series Size 3



For immediate engineering assistance or to place an order:
Call Toll Free: 800-431-1064

PICO Electronics, Inc.

143 Sparks Ave. Pelham, NY 10803-1837
 Tel: 914-738-1400 or Fax: 914-738-8225

[Go back to Surface Mount Transformers and Inductors menu](#)