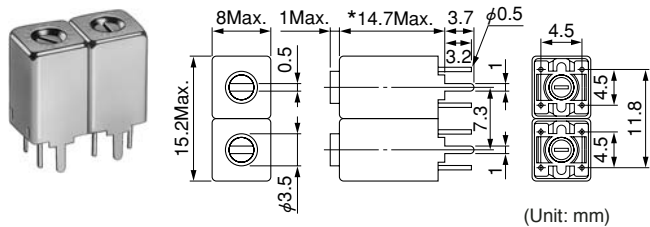


7HW Double Tuned 7HT Triple Tuned

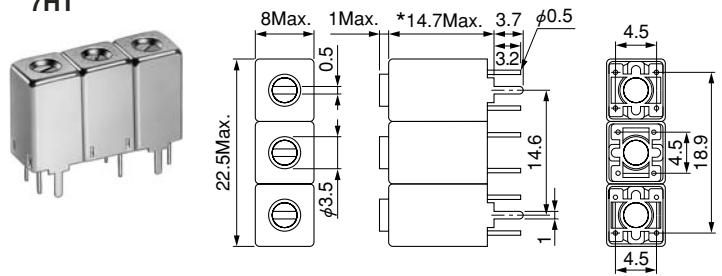
Frequency Range: 350MHz~1.2GHz
RoHS compliant

7HW



(Unit: mm)

7HT



(Unit: mm)

*Either 11 or 12.9mm height is possible. 高さ11mm、12.9mmも可能です

Features

- Compact low-profile helical filters, ideal for mobile communications equipment.
- RoHS compliant

特長

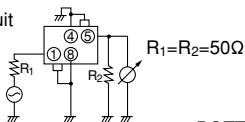
- 移動体通信に最適な小型薄形のヘルカルフィルタ
- RoHS 指令対応

Examples of 900MHz frequency response

900MHz周波数感度例

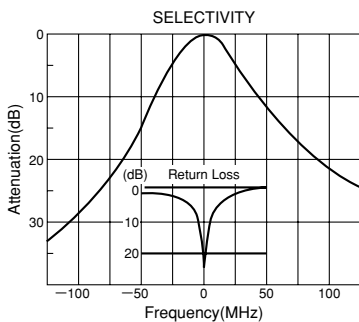
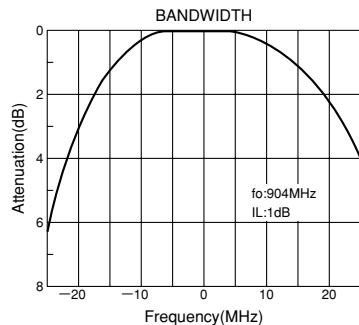
252HXPK-2709F

Test circuit



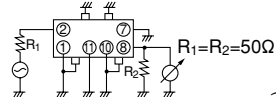
$R_1=R_2=50\Omega$

BOTTOM VIEW

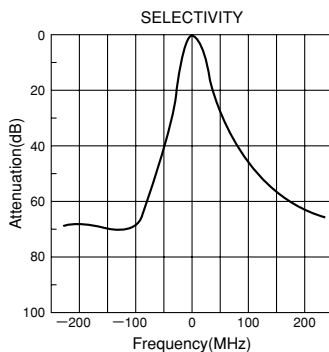
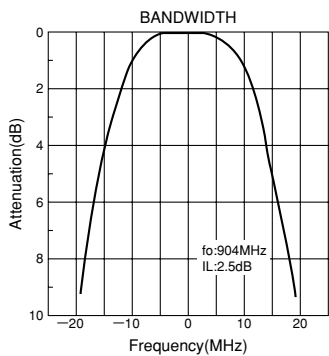


302HXPK-1278B

Test circuit



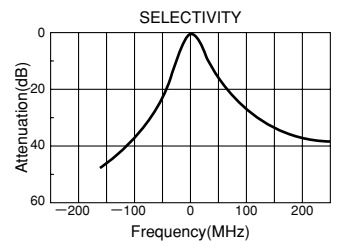
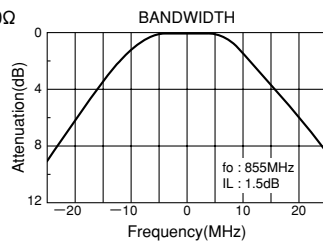
$R_1=R_2=50\Omega$



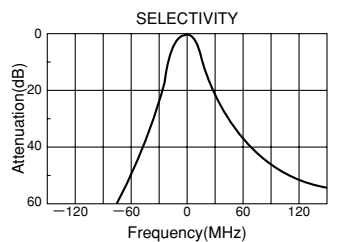
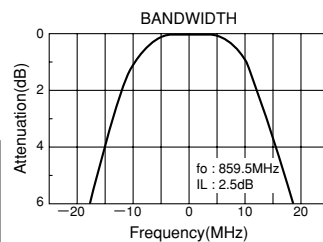
Typical characteristic for MCA radio use

MCAラジオ用代表特性曲線

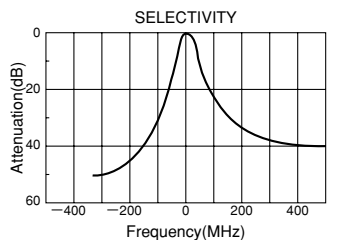
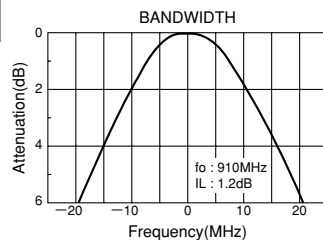
ANTENNA CIRCUIT FILTER 302MXPR-1077E



RF CIRCUIT FILTER 252HXPK-2674F



LOCAL FILTER 252HXPK-273F



continued on next page

次頁へ続く

continued from previous page
前頁より続く

SELECTION GUIDE FOR STANDARD FILTERS

TYPE 7HW (Double tuned)

東光品番	中心周波数	帯域幅	選択度		リップル	挿入損失
TOKO Part Number	Center Frequency (MHz)	Bandwidth (-1dB) (MHz) Min.	Fo - 50MHz (dB) Min.	Fo + 50MHz (dB) Min.	Ripple (dB) Max.	Insertion Loss (dB) Max.
7HW-35515A-360	360	7.0	35	25	0.5	3.0
7HW-36020A-370	370	7.0	35	25	0.5	3.0
7HW-37020A-380	380	7.0	35	20	0.5	3.0
7HW-38025A-390	390	7.0	28	20	0.5	3.0
7HW-39525A-410	410	7.0	25	18	0.5	3.0
7HW-40525A-420	420	8.0	25	18	0.5	3.0
7HW-42025A-435	435	8.0	25	18	0.5	3.0
7HW-43525A-450	450	8.0	25	18	0.5	3.0
7HW-45025A-460	460	8.0	20	16	0.5	3.0
7HW-46025A-475	475	8.0	20	16	0.5	3.0
7HW-47530A-490	490	10.0	18	14	0.5	3.0
7HW-49030A-505	505	10.0	18	14	0.5	3.0
7HW-51030A-525	525	10.0	14	12	0.5	3.0

TYPE 7HT (Triple tuned)

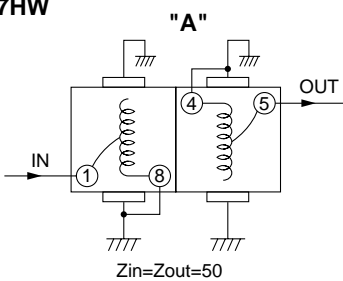
東光品番	中心周波数	帯域幅	選択度		リップル	挿入損失
TOKO Part Number	Center Frequency (MHz)	Bandwidth (-1dB) (MHz) Min.	Fo - ()MHz (dB) Min.	Fo + ()MHz (dB) Min.	Ripple (dB) Max.	Insertion Loss (dB) Max.
302MXPR-1138D	370	*6.0	35(30)	30(30)	1.0	4.5
302MXPR-1137D	390	*7.0	30(30)	25(30)	1.0	4.0
302MXPR-1136D	410	*8.0	30(30)	25(30)	1.0	3.5
302MXPR-1109D	415	13.0	40(50)	30(50)	1.0	3.5
302MXPR-1110D	465	12.0	40(50)	30(50)	1.0	4.0
302MXPR-1108D	500	13.0	36(50)	27(50)	1.0	3.5
302MXPR-1119D	680	10.0	43(50)	34(50)	1.0	4.5
302HXP-1111B	833	*18.0	30(50)	23(50)	1.0	4.0

*Bandwidth: 13dB

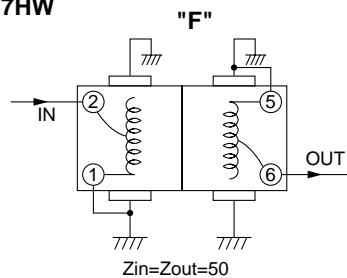
Test circuits

測定回路

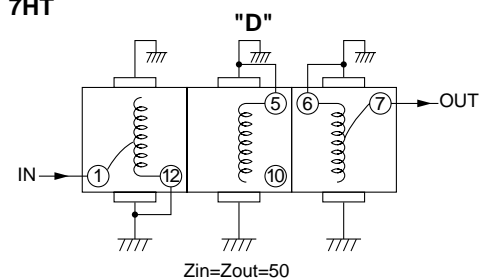
7HW



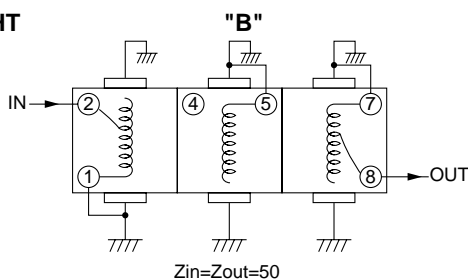
7HW



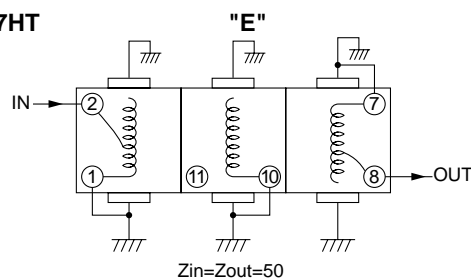
7HT



7HT



7HT



(BOTTOM VIEW)