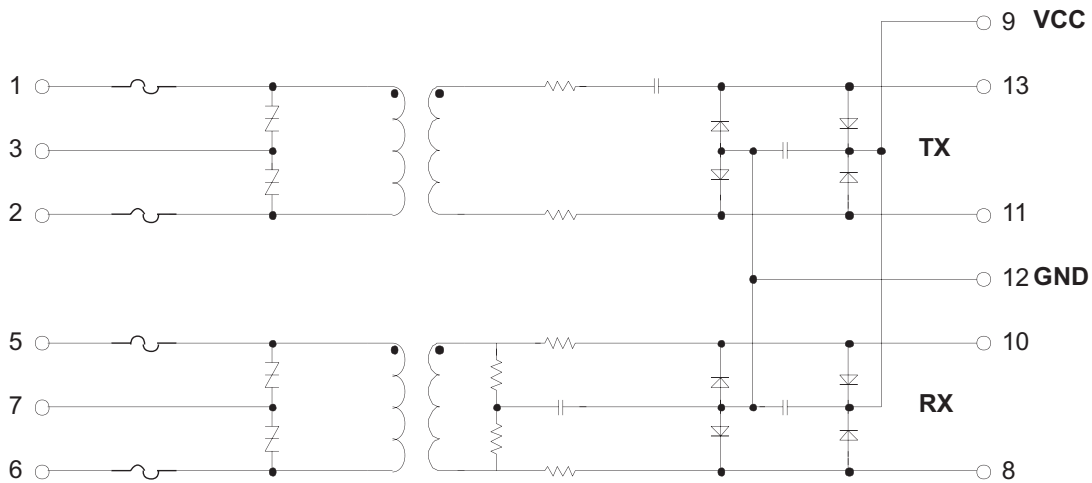


“Slim Line” Hybrids for Dallas T1/E1/J1 IC’s
APC822XX-D

FEATURES

- Supports Dallas Chipsets DS 2148/Q48, DS2155/Q55, DS21352/Q352, DS21552/Q552, DS21354/Q354 and DS21554/Q554 for T1/E1/J1 applications
- Minimum board space requirement - ideal for multiple interface line cards
- Longitudinal protection circuit designed to meet FCC part 68 as well as Telcordia GR1089 for 1st level and 2nd level lightning and 1st level power line cross events
- Approval for safety standards to BS EN60950 (1500V isolation) pending
- APC’s “Slim Line” T1/E1/J1 hybrids have been designed to minimize the board space requirements for line interface circuitry on the T1/E1/J1 multichannel line cards

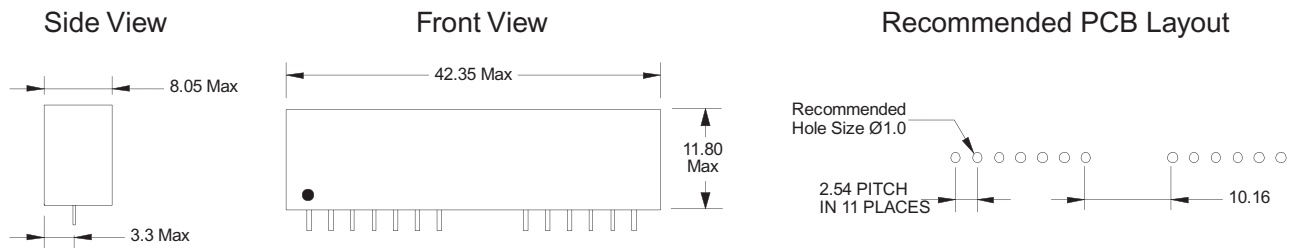
SCHEMATIC



NOTE: Pin 4 NC

NOTES: TYPICAL SCHEMATIC (SELV COMPONENTS WILL VARY SUBJECT TO APPLICATION)

MECHANICAL



NOTE: ALL DIMENSIONS IN MM

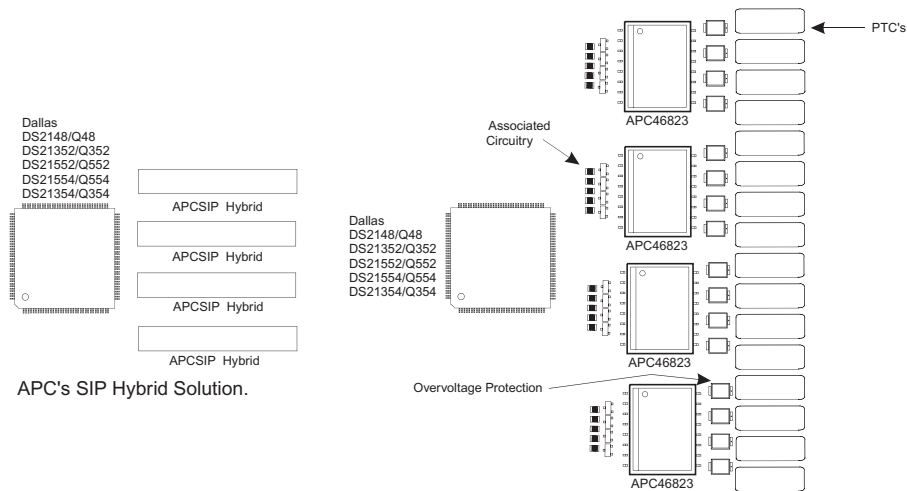


“Slim Line” Hybrids for Dallas T1/E1/J1 IC’s
APC822XX-D

SELECTION GUIDE

Dallas Device Ref	Mode	Supply V	Application	APC SIP Part No.
DS2148/Q48 LIU	T1	3.3V	100 ohm impedance	82231
	T1	5.0V	100 ohm impedance	82232
	E1	3.3V	75 ohm impedance	82233
	E1	5.0V	75 ohm impedance	82234
	E1	3.3V	120 ohm impedance	82235
	E1	5.0V	120 ohm impedance	82236
	J1	3.3V	110 ohm impedance	82241
	J1	5.0V	110 ohm impedance	82242
DS2155/Q55 LIU	T1	3.3V	100 ohm impedance	82231
	E1	3.3V	75 ohm impedance	82233
	E1	3.3V	120 ohm impedance	82235
	J1	3.3V	110 ohm impedance	82241
DS2148/Q48 LIU (soft termination)	T1/E1/J1	3.3V	Programmable	82243
	T1/E1/J1	5.0V	Programmable	82244
DS2155/Q55 LIU (soft termination)	T1/E1/J1	3.3V	Programmable	82243
DS21352/Q352	T1	3.3V	100 ohm impedance	82231
	J1	3.3V	110 ohm impedance	82241
DS21552/Q552	T1	5.0V	100 ohm impedance	82245
	J1	5.0V	110 ohm impedance	82242
DS21354/Q354	E1	3.3V	75 ohm impedance	82233
	E1	3.3V	120 ohm impedance	82235
DS21554/Q554	E1	5.0V	75 ohm impedance	82234
	E1	5.0V	120 ohm impedance	82236

HYBRID V DISCRETE SOLUTIONS



Discrete Solution, as per example layout

©2003 Bel Fuse Inc. Specifications subject to change without notice. 05.20.03

CORPORATE

Bel Fuse Inc.
206 Van Vorst Street
Jersey City, NJ 07302
Tel 201-432-0463
Fax 201-432-9542
www.belfuse.com

FAR EAST

Bel Fuse Ltd.
8F / 8 Luk Hop Street
San Po Kong
Kowloon, Hong Kong
Tel 852-2328-5515
Fax 852-2352-3706
www.belfuse.com

EUROPE

Bel Stewart Connector
45/46 Riverside
Medway City Estate
Rochester, Kent ME2 4DP U.K.
Tel 44-1634-722890
Fax 44-1634-716677
www.belfuse.com