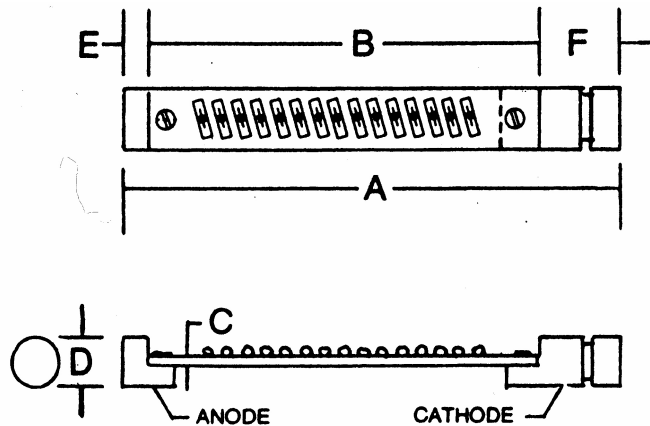


SILICON HIGH VOLTAGE ASSEMBLY BOARD

DIM	INCHES	MILLIMETERS
	B1168	B1168
A	6.93	170
B	5.94	145
C	.0625	3.18
D	.787	20
E	.197	5
F	.791	20



ELECTRICAL RATINGS

		B1168	UNITS
PEAK INVERSE VOLTAGE – Operating (Note 1)	$V_{r(oper)}$	120	kV
PEAK INVERSE VOLTAGE – Test	$V_{r(test)}$	135	kV
PEAK SURGE CURRENT, ½ CYCLE @ 60 Hz	I_{fsm}	20	Amps
DC FORWARD CURRENT @ 55° C (Note 1)	I_o	220	Ma
JUNCTION OPERATING and STORAGE TEMPERATURE	T_j, T_{stg}	- 55 to + 125	°C

Note 1: Tested in oil @ 55° C

ELECTRICAL CHARACTERISTICS

CHARACTERISTICS		B1168	UNITS
MAXIMUM INSTANTANEOUS VOLTAGE DROP @ $I_f = 50$ mA	V_{fm}	204	Volts
MAXIMUM REVERSE CURRENT @ $V_r(Oper)$	I_{rm}	1	uA
MAXIMUM REVERSE CURRENT @ $V_r(test)$	I_{rm}	1	uA

(203) 467-2591 TEL
 (203) 469-5928 FAX
 Email: Info@ edal.com
 Internet: http://www.edal.com

EDAL industries, inc.

51 Commerce St. East Haven, CT 06512