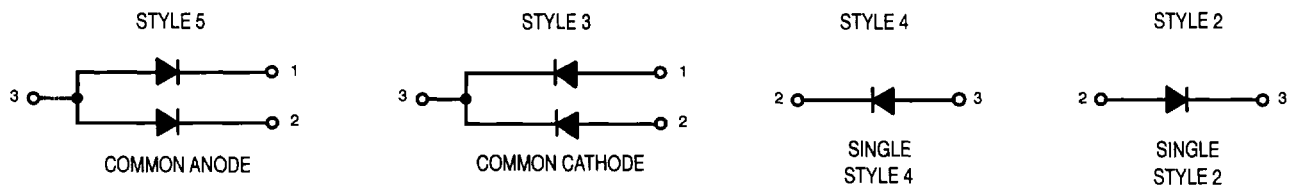


SC-59 DEVICES (continued)



General-Purpose Signal and Switching Diodes

The following is a listing of small-signal switching diodes in surface mount packages. These diodes are intended for low current switching and signal steering applications.

Device	Marking	$V_{(BR)R}$		I_R		V_F			$C_J^{(1)}$ Max (pF)	t_{rr} Max (ns)	Case Style
		Min (V)	@ I_{BR} (μA)	Max (μA)	@ V_R (V)	Min (V)	Max (V)	@ I_R (mA)			

SINGLE

<i>M1MA151AT1</i>	MA	40	100	0.1	35	—	1.2	100	2.0	3.0	4
<i>M1MA151KT1</i>	MH	40	100	0.1	35	—	1.2	100	2.0	3.0	2

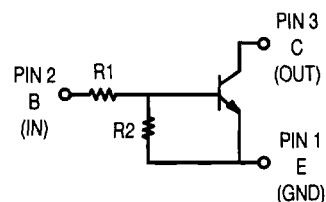
DUAL

<i>M1MA151WAT1</i>	MN	40	100	0.1	35	—	1.2	100	15	10	5
<i>M1MA151WKT1</i>	MT	40	100	0.1	35	—	1.2	100	2.0	3.0	3

⁽¹⁾ $V_R = 0 V, f = 1.0 MHz$

Plastic-Encapsulated Bias Resistor Transistors for General Purpose Applications

These devices include bias resistors on the semiconductor chip with the transistor. See the BRT diagram for orientation of resistors.



Device		Marking		$V_{(BR)CEO}$ Volts (Min)	$h_{FE}@ I_C$		I_C mA Max	R_1 Ohm	R_2 Ohm
NPN	PNP	NPN	PNP		Min	mA			
<i>MUN2211T1</i>	<i>MUN2111T1</i>	8A	6A	50	35	5.0	100	10K	10K
<i>MUN2212T1</i>	<i>MUN2112T1</i>	8B	6B	50	60	5.0	100	22K	22K
<i>MUN2213T1</i>	<i>MUN2113T1</i>	8C	6C	50	80	5.0	100	47K	47K
<i>MUN2214T1</i>	<i>MUN2114T1</i>	8D	6D	50	80	5.0	100	10K	47K

See Packaging Information under Technical Data Section for reel size, quantity and ordering information.

Devices listed in bold, italic are Motorola preferred devices.