

DIMENSIONS ARE IN INCHES		UNLESS OTHERWISE NOTED		TOLERANCES ARE:	
ONE PLACE DECIMALS ±	THREE PLACE DECIMALS ±	ANGLES ± 2°			
TWO PLACE DECIMALS ±	FOUR PLACE DECIMALS ±				

TITLE: **TERMINAL STRIP ASSEMBLY**

DWG NO: **TX-1XX-X-X**
SHEET 1 OF 4

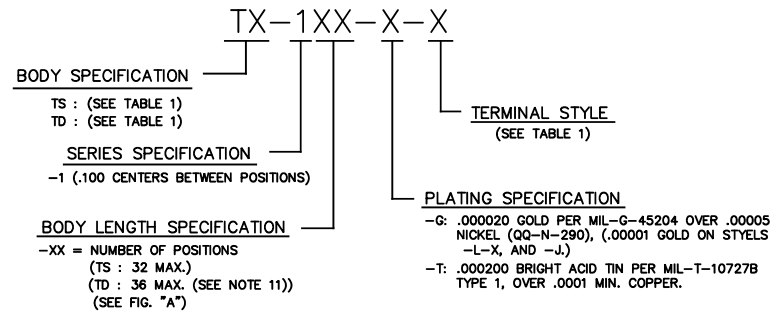
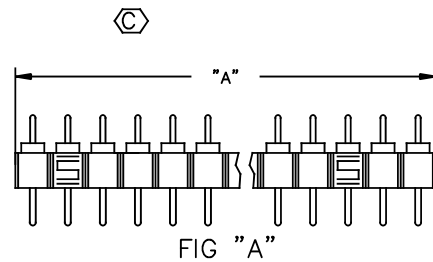


TABLE 1

TERMINAL STYLE	TERMINAL/BODY SPECIFICATION				FIG.	SHEET
	TS: SINGLE	TS BODY	TD: DOUBLE	TD BODY		
-AA	T-1R5-X	SEE NOTE 7	T-1R5-X	SEE NOTE 6	1	2
-A	T-1R0-X	SEE NOTE 7	T-1R0-X	SEE NOTE 6	2	2
-A-1	T-1R7-1-X	SEE NOTE 7	T-1R7-1-X	SEE NOTE 6	3	2
-A-2	T-1R7-2-X	SEE NOTE 7	T-1R7-2-X	SEE NOTE 6	4	2
-B	T-1R1-X	SEE NOTE 10	T-1R1-X	SEE NOTE 6	5	2
-B-2	T-1R8-2-X	SEE NOTE 7	T-1R8-2-X	SEE NOTE 6	7	2
-C	T-1R2-X	SEE NOTE 7	T-1R2-X	SEE NOTE 6	8	2
-C-1	T-1R9-1-X	SEE NOTE 7	T-1R9-1-X	SEE NOTE 6	9	2
-C-2	T-1R9-2-X	SEE NOTE 7	T-1R9-2-X	SEE NOTE 6	10	2
-D-1-1	T-1S4-1-1-X	SEE NOTE 7	T-1S4-1-1-X	SEE NOTE 6	11	3
-D-1-2	T-1S4-1-2-X	SEE NOTE 7	T-1S4-1-2-X	SEE NOTE 6	12	3
-E	T-1R12-X	SEE NOTE 7	N/A		17	3
-G-1	T-1R5-1-X	SEE NOTE 7	T-1R5-1-X	SEE NOTE 6	19	3
-J	S-1P1-X	SEE NOTE 8	S-1P1-X	SEE NOTE 6	21	4
-K	T-1R12-X	SEE NOTE 7	T-1R12-X	SEE NOTE 6	22	4
-L-1	S-1W1-1-X	SEE NOTE 8	S-1W1-1-X	SEE NOTE 6	23	4
-L-2	S-1W1-2-X	SEE NOTE 8	S-1W1-2-X	SEE NOTE 6	24	4
-L-3	S-1W1-3-X	SEE NOTE 8	S-1W1-3-X	SEE NOTE 6	25	4
-N	T-1R5-1-X	SEE NOTE 7	N/A		27	4
-Q-3 *	S-1W1-3-X	SEE NOTE 7	N/A		29	4

N/A = NOT AVAILABLE * STYLE -Q-3 AVAILABLE ONLY AS A COMPONENT OF CSP/25 CABLE ASSEMBLIES.

BODY SPEC.	"A"
TS	[(100 X NO. OF POS)+.008]±.015
TD	[(100 X NO. OF POS)-.006]±.015

BODY SPEC.	LEAD STYLE	TUBE	PLUG	FIG
TS	A-1, A-2, A, AA, B, C, H, G-1	PT-1-24-01-24	TP-24	30
	J	PT-1-24-01-23	TP-12	31
	D-1-2	PT-1-24-02-03	TP-24	32
	D-1-1	PT-1-24-10-03	TP-03	33
TD	A-1	PT-1-24-05-17	TP-07	34
	A-2	PT-1-24-02-46		35
	A, AA	PT-1-24-01-22	TP-03	36
	J	PT-1-24-01-14		37

- NOTE:
- SEE COMPONENT PRINT FOR MAXIMUM ALLOWABLE BOW.
 - MINIMUM PUSHOUT FORCE = 5 LBS.
 - MAXIMUM ALLOWABLE TOE IN/OUT OF TERMINALS = ± 2°.
 - MAX ALLOWABLE FLASH AFTER REMOVAL OF CROSS BARS: .005 [13]
 - ⊕ REPRESENTS A CRITICAL DIMENSION.
 - USE DSB-36 AND FILL WITH COUNTERBORE DOWN.
 - USE TBS-32 AND FILL WITH COUNTERBORE UP.
 - USE SSB-XX AND FILL WITH COUNTERBORE UP.
 - FOR LEAD STYLES PACKAGED IN TUBES: PACKAGE -05 THRU -36 POSITIONS IN TUBES; LAYER PACKAGE SMALLER POSITIONS.
 - USE SSB-XX AND FILL WITH COUNTERBORE DOWN.
 - FOR 1 POSITION TD ASSEMBLY, USE A TS-132 AND CUT TO A 2 POSITION.

PROPRIETARY NOTE
THIS DOCUMENT CONTAINS CONFIDENTIAL AND PROPRIETARY INFORMATION AND ALL DESIGN, MANUFACTURING, REPRODUCTION, USE, RIGHT, RIGHTS AND SALES RIGHTS ARE EXPRESSLY RESERVED BY SAMTEC, INC. THIS DOCUMENT SHALL NOT BE DISCLOSED, IN WHOLE OR PART, TO ANY UNAUTHORIZED PERSON OR ENTITY FOR ANY OTHER PROJECT BY ANY MANUFACTURER, REPRODUCER OR INCORPORATED IN ANY OTHER PROJECT BY ANY MANUFACTURER WITHOUT THE EXPRESS WRITTEN CONSENT OF SAMTEC, INC.

MATERIAL:
INSULATOR:
GLASS FILLED POLYESTER
COLOR: BLACK

TERMINAL:
BRASS, EXCEPT STYLE G
IS PHOSPHOR BRONZE

PLOT SCALE: 1=1

520 PARK EAST BLVD. NEW ALBANY, INDIANA 47150
PHONE (812) 944-6733 P.O. BOX 1147
CODE 55322

MADE BY: L.W. 12/05/84

TX-1XX-X-X
SHEET 1 OF 4