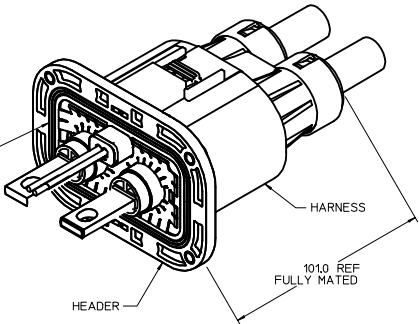
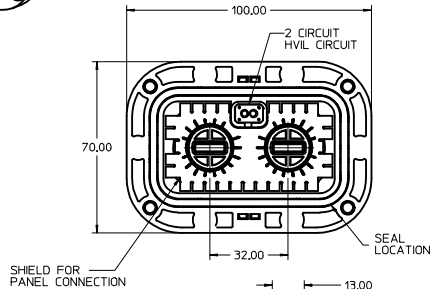
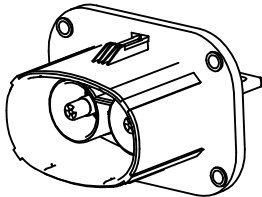


PART NUMBER	KEYING OPTION
171467-1001	A
171467-1002	B

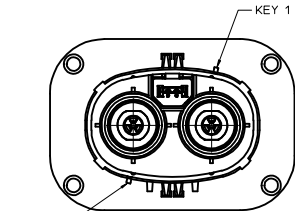
MAIN PANEL SEAL MUST BE FULLY SEATED IN SEAL CAVITY BEFORE ATTACHMENT TO PANEL



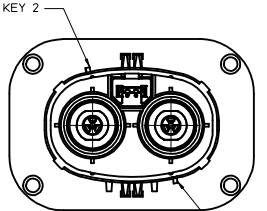
HEADER MATED TO HARNESS



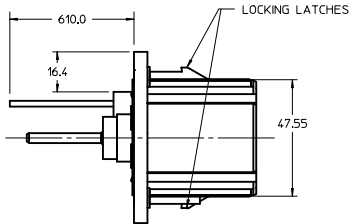
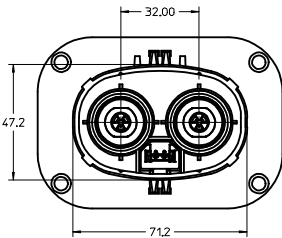
- NOTES:
- MATERIAL:  
MAIN HOUSING: POLYESTER 94V-0 (OPTIONAL UV STABILIZED)  
COLOR: ORANGE  
POWER TERMINALS: COPPER  
HVIL TERMINALS: COPPER ALLOY
  - FINISH:  
POWER TERMINALS: SILVER OVER NICKEL PLATING  
HVIL TERMINALS: TIN OVER NICKEL PLATING
  - WIRE FOR HVIL TERMINALS: 18 GAGE TXL AUTOMOTIVE GRADE STRANDED WIRE
  - MATES WITH HARNESS ASSEMBLY SERIES 171466-1\*\*\*
  - ATTACH HEADER WITH SCREWS TO PANEL PER MOLEX APPLICATION SPEC
  - PRODUCT SPECIFICATION: PS-171467-001
  - APPLICATION SPECIFICATION: AS-171467-001
  - PACKAGING SPECIFICATION: PK-171467-999
  - SHIELD MATING SURFACE WITHIN THE KEEP OUT ZONE MUST BE A CLEAN SURFACE WITH TIN OR NICKEL PLATING
  - BUS BAR AND MOUNTING HARDWARE TO BE OVERALL TIN PLATED



OPTION A  
KEYING 1-4  
MOLEX STANDARD  
KEYIN VERSION

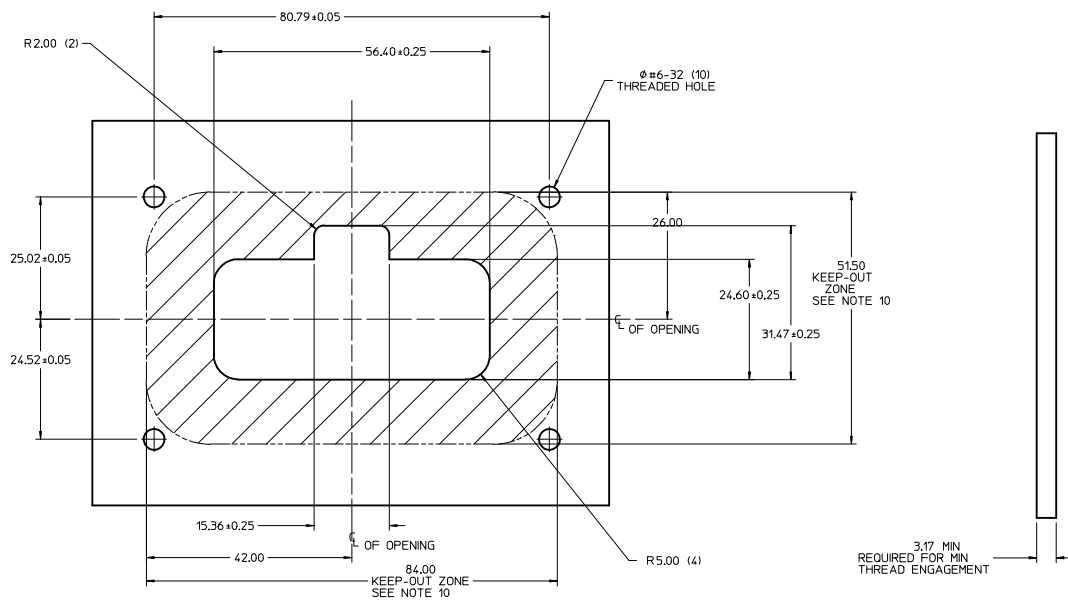


OPTION B  
KEYING 2-3

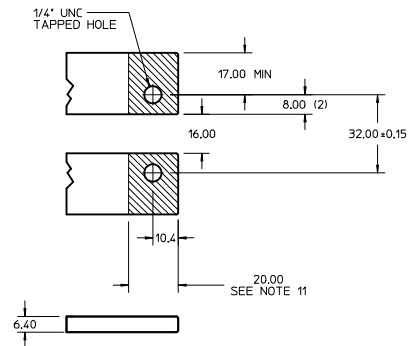


USE OF THIS PRODUCT REQUIRES THAT APPROPRIATE HIGH VOLTAGE WARNING LABELS BE APPLIED TO THE CABLE ASSEMBLY AND/OR IN CLOSE PROXIMITY OF THE MATED CONNECTOR APPLICATION IN A MANNER THAT PROVIDES SUITABLE WARNING TO THE END USER AND MEETS APPLICABLE LAWS. IT IS THE RESPONSIBILITY OF THE OEM OR MANUFACTURER OF THE PRODUCT IN WHICH THIS CONNECTOR SYSTEM IS USED TO APPLY THE APPROPRIATE HIGH VOLTAGE WARNING LABEL(S) TO THE FINAL PRODUCT. TO THE EXTENT MOLEX IS NOT RESPONSIBLE FOR THE FINAL CABLE ASSEMBLY, MOLEX DISCLAIMS ALL WARRANTIES AND LIABILITY THAT RESULT FROM A FAILURE TO PROVIDE AN APPROPRIATE WARNING.

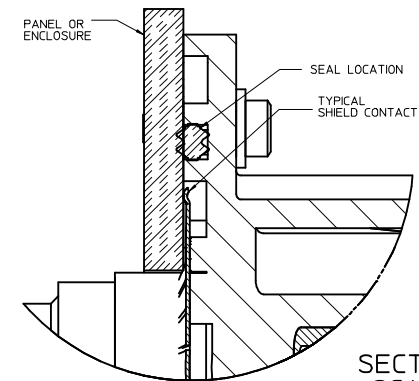
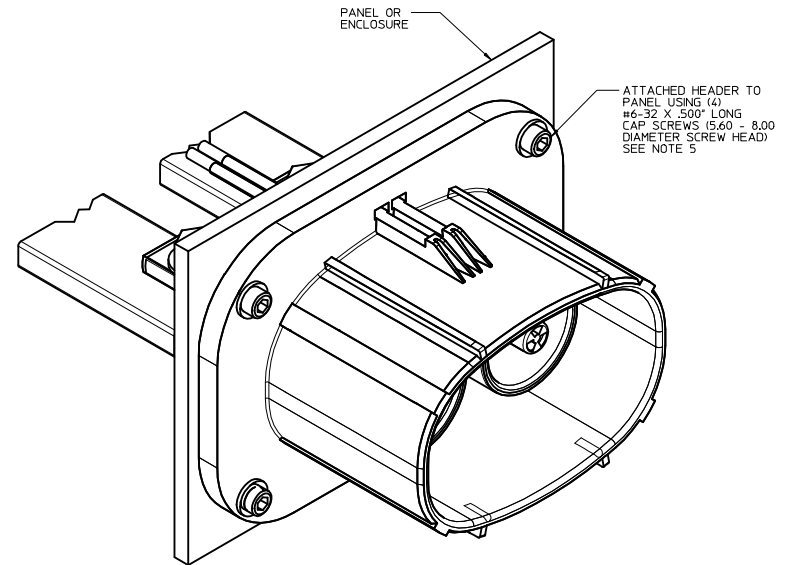
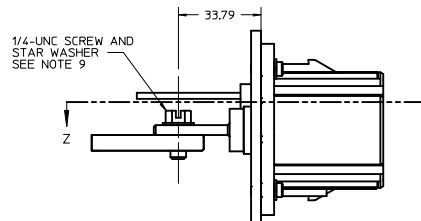
REVISED DIMENSION EC NO.: UC20014-27240 DRAWN: 0015 CHKD: 0015 APPROV: 0015 DATE: 2013/11/25	QUALITY SYMBOLS	GENERAL TOLERANCES (UNLESS SPECIFIED)		DIMENSION STYLE MM ONLY		SCALE 1:1	DESIGN UNITS METRIC	THIRD ANGLE PROJECTION		
	▽=0	mm	INCH	DRAWN BY	DATE	MOLEX	MOLEX INCORPORATED	HEADER ASSY PANEL MOUNT IMPERIUM	SHEET NO. 1 OF 2	
	▽=0	4 PLACES ±	----	MDATA	2011/12/08					
	▽=0	3 PLACES ±	----	CHECKED BY	DATE					
	▽=0	2 PLACES ±	----	MDATA	2011/12/21					
	▽=0	1 PLACE ±	----	APPROVED BY	DATE					
		ANGULAR ±1/2°		MATERIAL NO.		DOCUMENT NO.				
		DRAFT WHERE APPLICABLE MUST REMAIN WITHIN DIMENSIONS		SEE CHART		SD-171467-1000				
				SIZE		THIS DRAWING CONTAINS INFORMATION THAT IS PROPRIETARY TO MOLEX INCORPORATED AND SHOULD NOT BE USED WITHOUT WRITTEN PERMISSION				



PANEL REQUIREMENTS  
SCALE 2:1



RECOMMENDED BUS BAR DETAIL

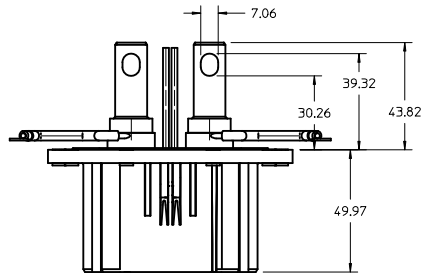
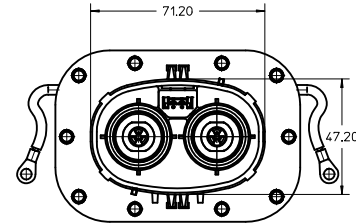
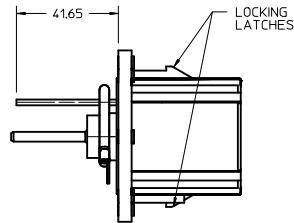
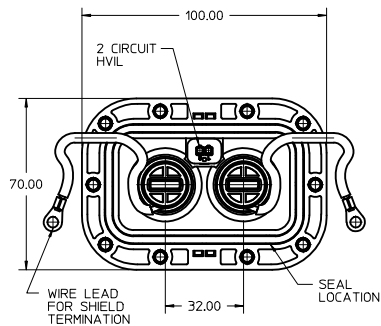
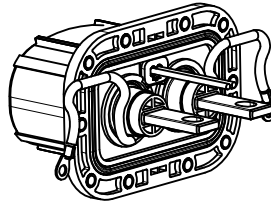
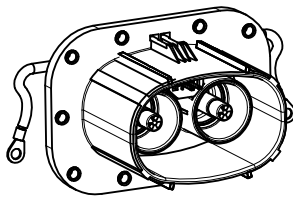


SECTION Z-Z  
SCALE 4:1

<div>SEE SHEET 1</div> <div>EC NO: UCP2014-2240</div> <div>DRAWN: JUILLES</div> <div>CHKD:</div> <div>APPR: APATEL</div> <div>DATE: 2013/11/25</div>	QUALITY SYMBOLS	GENERAL TOLERANCES (UNLESS SPECIFIED)	DIMENSION STYLE		SCALE	DESIGN UNITS	THIRD ANGLE PROJECTION																		
				MM ONLY		1:1	METRIC																		
	<div>▽=0</div>	<table><tr><th></th><th>mm</th><th>INCH</th></tr><tr><td>4 PLACES</td><td>± .005</td><td>± .0004</td></tr><tr><td>3 PLACES</td><td>± .006</td><td>± .0005</td></tr><tr><td>2 PLACES</td><td>± .060</td><td></td></tr><tr><td>1 PLACE</td><td>± .090</td><td></td></tr><tr><td colspan="3">ANGULAR ± 1/2°</td></tr></table>		mm	INCH	4 PLACES	± .005	± .0004	3 PLACES	± .006	± .0005	2 PLACES	± .060		1 PLACE	± .090		ANGULAR ± 1/2°			<div>DRAWN BY</div> <div>MDATA</div> <div>DATE</div> <div>2011/12/08</div> <div>CHECKED BY</div> <div>DATE</div> <div>MDATA</div> <div>2011/12/21</div> <div>APPROVED BY</div> <div>DATE</div> <div>APATEL</div> <div>2012/04/11</div>	TITLE			
		mm	INCH																						
	4 PLACES	± .005	± .0004																						
3 PLACES	± .006	± .0005																							
2 PLACES	± .060																								
1 PLACE	± .090																								
ANGULAR ± 1/2°																									
<div>▽=0</div>	HEADER ASSY PANEL MOUNT IMPERIUM																								
<div>▽=0</div>	MOLEX INCORPORATED																								
REV	DRAFT WHERE APPLICABLE MUST REMAIN WITHIN DIMENSIONS		MATERIAL NO.		DOCUMENT NO.		SHEET NO.																		
			SEE CHART		SD-171467-1000		2 OF 2																		
			SIZE D		THIS DRAWING CONTAINS INFORMATION THAT IS PROPRIETARY TO MOLEX INCORPORATED AND SHOULD NOT BE USED WITHOUT WRITTEN PERMISSION																				

## PART NUMBER

171467-1100




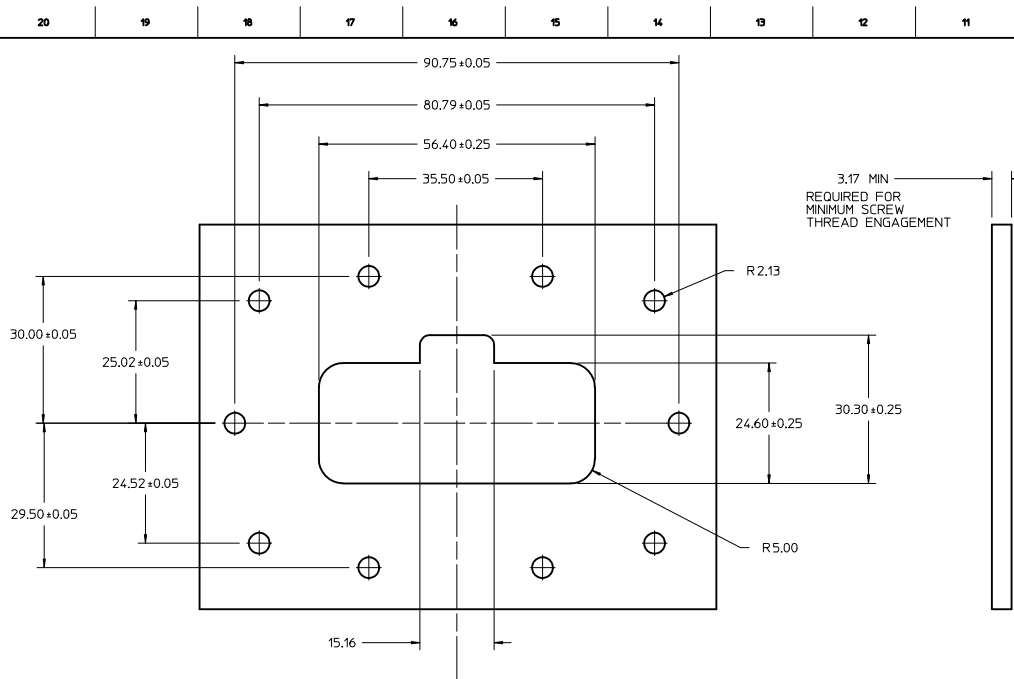
## NOTES:

- MATERIAL:  
MAIN HOUSING: POLYESTER 94V-0 (OPTIONAL UV STABILIZED)  
COLOR: ORANGE  
POWER TERMINALS: COPPER  
HVIL TERMINALS: COPPER ALLOY
- FINISH:  
POWER TERMINALS: SILVER OVER NICKEL PLATING  
HVIL TERMINALS: TIN OVER NICKEL PLATING
- WIRE FOR HVIL TERMINALS: 18 GAGE XL AUTOMOTIVE GRADE STRANDED WIRE
- MATES WITH HARNESS ASSEMBLY 171466-1\*\*\* SERIES CABLES
- ATTACH HEADER WITH SCREWS TO PANEL WITH \*\*\* IN-LBS OF TORQUE
- PRODUCT SPECIFICATION: PS-171466-xxx
- APPLICATION SPECIFICATION: AS-171466-xxx
- PACKAGING SPECIFICATION: PK-171467-xxx
- ATTACH HEADER TERMINAL WITH BOLT TO BUSS BAR WITH \*\* IN LBS OF TORQUE
- BUS BAR AND MOUNTING HARDWARE TO BE OVERALL TIN PLATED.

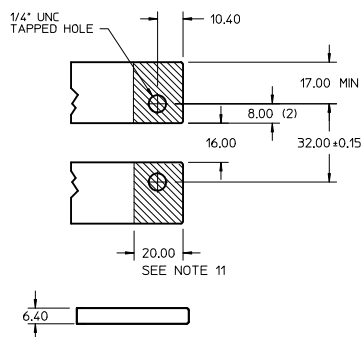
HEADER CONNECTOR WITH WIRE LEAD

PRELIMINARY

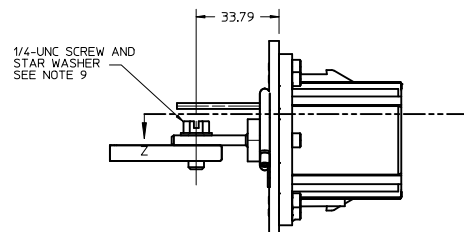
PRELIMINARY EC NO: UCP2012-3454 DRAWN BY: MDATA CHKD: APATEL APPR: APATEL DATE: 2012/04/19	REV	DESCRIPTION	QUALITY SYMBOLS	GENERAL TOLERANCES (UNLESS SPECIFIED)		DIMENSION STYLE		SCALE	DESIGN UNITS	 THIRD ANGLE PROJECTION	
						MM ONLY		1:1	METRIC		
						DRAWN BY		DATE	TITLE		
						MDATA		2012/04/19	HEADER ASSY PANEL MOUNT IMPERIUM		
						CHECKED BY		DATE	<b>molex</b>		
						APPROVED BY		DATE			
						APATEL		2012/04/27			
						MATERIAL NO.		DOCUMENT NO.			
						SEE CHART		SD-171467-1100			
						SIZE		THIS DRAWING CONTAINS INFORMATION THAT IS PROPRIETARY TO MOLEX INCORPORATED AND SHOULD NOT BE USED WITHOUT WRITTEN PERMISSION			



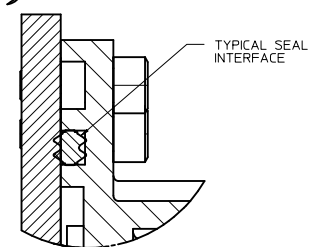
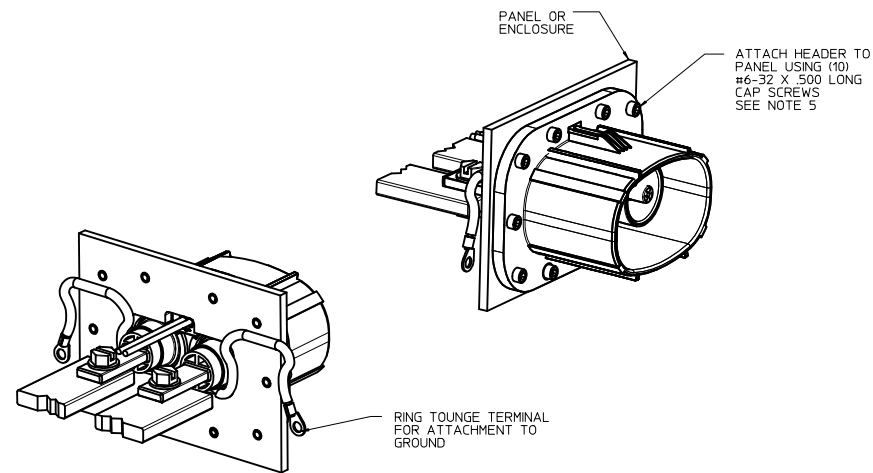
PANEL REQUIREMENTS  
SCALE 2:1



RECOMMENDED BUSS BAR DETAIL

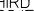


BUSS BAR ATTACHMENT



Partial1  
SCALE 4:1

## HEADER CONNECTOR TO PANEL ATTACHMENT

SEE SHEET 1 IEC NO: UCP2012-3454 DRAWN BY: MDATA CHKD: APATEL APPR: APATEL DATE: 2012/04/19	DESCRIPTION	QUALITY SYMBOLS	GENERAL TOLERANCES (UNLESS SPECIFIED)		DIMENSION STYLE		SCALE	DESIGN UNITS	 THIRD ANGLE PROJECTION	TITLE	DOCUMENT NO.	SHEET NO.
			MM ONLY		1:1	METRIC						
			DRAWN BY DATE		CHECKED BY DATE		APPROVED BY DATE					
			MDATA 2012/04/19		APATEL 2012/04/27		SD-171467-1100					
1	REV	▽=0 ▽=0 ▽=0	mm INCH		ANGULAR ±1/2°		DRAFT WHERE APPLICABLE MUST REMAIN WITHIN DIMENSIONS		SEE CHART		2 OF 2	
			4 PLACES ± --- 3 PLACES ± --- 2 PLACES ± 0.13 1 PLACE ± 0.25 0 PLACE ± ---		± --- ± --- ± --- ± --- ± ---				HEADER ASSY PANEL MOUNT IMPERIUM <b>molex</b>		THIS DRAWING CONTAINS INFORMATION THAT IS PROPRIETARY TO MOLEX INCORPORATED AND SHOULD NOT BE USED WITHOUT WRITTEN PERMISSION	