



AS5600-SO_EK_AB

Adapter board

Quickstart Guide

Step 1: Kit Content

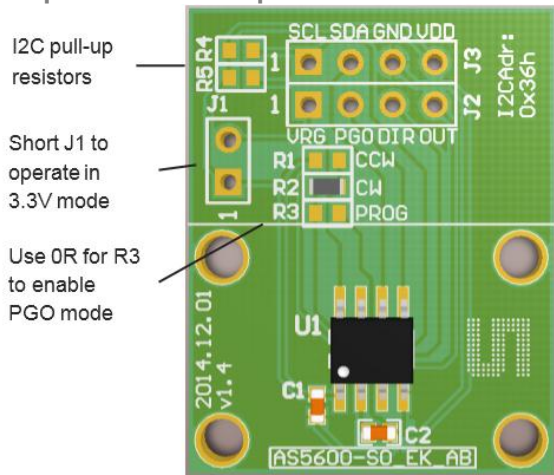
No.	Item
1	AS5600-SO_EK_AB
2	AS5000-MD6H-1

Step 2: Pin description

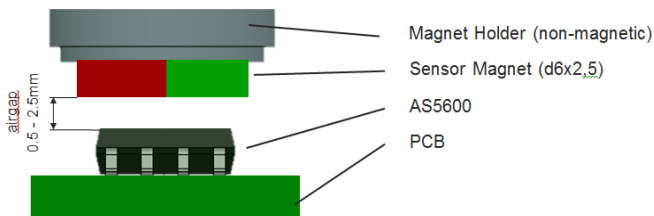
Hdr	Pin	Symbol	Description
J2	1	SCL	I2C Clock
J2	2	SDA	I2C Data
J2	3	GND	Ground
J2	4	VDD	Power Supply
J3	1	VRG	LDO Pin in 5V Mode
J3	2	PGO	Programming Mode
J3	3	DIR	Direction input
J3	4	OUT	Output Pin

Step3: Board description

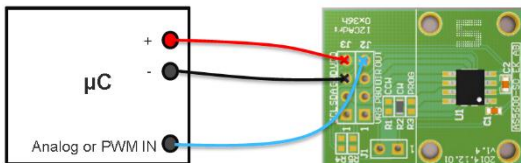
Adapterboard Description



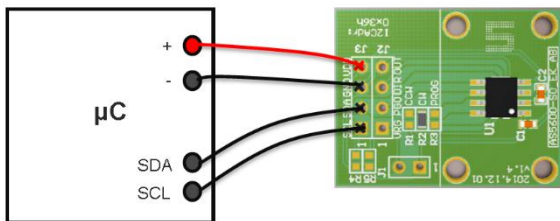
Mechanical Configuration



Using the board in 3-Wire Mode



Using the board in I2C Mode



Contact Information

Headquarters

ams AG

Tobelbader Strasse 30
8141 Unterpremstaetten

Austria

T. +43 (0) 3136 500 0

For Sales Offices, Distributors and Representatives, please visit:

<http://www.ams.com/contact>