

AMP03

FEATURES

High CMRR: 100 dB Typ
Low Nonlinearity: 0.001% Max
Low Distortion: 0.001% Typ
Wide Bandwidth: 3 MHz Typ
Fast Slew Rate: 9.5 V/ μ s Typ
Fast Settling (0.01%): 1 μ s Typ
Low Cost

APPLICATIONS

Summing Amplifiers
Instrumentation Amplifiers
Balanced Line Receivers
Current-Voltage Conversion
Absolute Value Amplifier
4 to 20 mA Current Transmitter
Precision Voltage Reference Applications
Lower Cost and Higher Speed Version of INA105

GENERAL DESCRIPTION

The AMP03 is a monolithic unity-gain, high speed differential amplifier. Incorporating a matched thin film resistor network, the AMP03 features stable operation over temperature without requiring expensive external matched components. The AMP03 is a basic analog building block for differential amplifier and instrumentation applications.

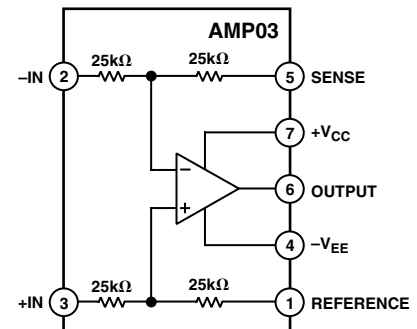
The differential amplifier topology of the AMP03 both amplifies the difference between two signals and provides extremely high rejection of the common-mode input voltage. By providing common-mode rejection (CMR) of 100 dB typical, the AMP03 solves common problems encountered in instrumentation design. As an example, the AMP03 is ideal for performing either addition or subtraction of two signals without using expensive externally matched precision resistors. The large common-mode rejection is made possible by matching the internal resistors to better than 0.002% and maintaining a thermally symmetric layout. Additionally, due to high CMR over frequency, the AMP03 is an ideal general amplifier for buffering signals in a noisy environment into data acquisition systems.

The AMP03 is a higher speed alternative to the INA105. Featuring slew rates of 9.5 V/ μ s and a bandwidth of 3 MHz, the AMP03 offers superior performance to the INA105 for high speed current sources, absolute value amplifiers, and summing amplifiers.

REV. F

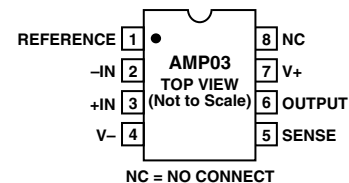
Information furnished by Analog Devices is believed to be accurate and reliable. However, no responsibility is assumed by Analog Devices for its use, nor for any infringements of patents or other rights of third parties that may result from its use. No license is granted by implication or otherwise under any patent or patent rights of Analog Devices. Trademarks and registered trademarks are the property of their respective owners.

FUNCTIONAL BLOCK DIAGRAM

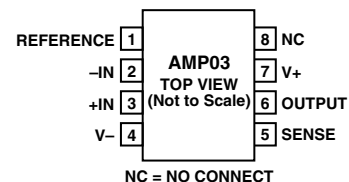


PIN CONNECTIONS

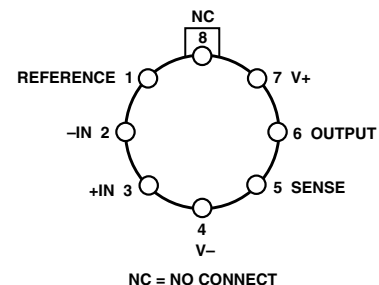
8-Lead PDIP (P Suffix)



8-Lead SOIC (S Suffix)



Header (J Suffix)



AMP03* Product Page Quick Links

Last Content Update: 11/01/2016

[Comparable Parts](#)

View a parametric search of comparable parts

[Documentation](#)

Application Notes

- AN-244: A User's Guide to I.C. Instrumentation Amplifiers
- AN-245: Instrumentation Amplifiers Solve Unusual Design Problems
- AN-348: Avoiding Passive-Component Pitfalls
- AN-589: Ways to Optimize the Performance of a Difference Amplifier
- AN-671: Reducing RFI Rectification Errors in In-Amp Circuits

Data Sheet

- AMP03: Military Data Sheet
- AMP03: Precision, Unity-Gain Differential Amplifier Data Sheet

Technical Books

- A Designer's Guide to Instrumentation Amplifiers, 3rd Edition, 2006

[Reference Materials](#)

Technical Articles

- Auto-Zero Amplifiers
- High-performance Adder Uses Instrumentation Amplifiers
- Input Filter Prevents Instrumentation-amp RF-Rectification Errors
- The AD8221 - Setting a New Industry Standard for Instrumentation Amplifiers

[Design Resources](#)

- AMP03 Material Declaration
- PCN-PDN Information
- Quality And Reliability
- Symbols and Footprints

[Discussions](#)

View all AMP03 EngineerZone Discussions

[Sample and Buy](#)

Visit the product page to see pricing options

[Technical Support](#)

Submit a technical question or find your regional support number

AMP03—SPECIFICATIONS

ELECTRICAL CHARACTERISTICS (@ $V_S = \pm 15\text{ V}$, $T_A = +25^\circ\text{C}$, unless otherwise noted.)

| Parameter | Symbol | Conditions | AMP03F | | | AMP03B | | | AMP03G | | | Unit |
|-------------------------------------|----------|--|-----------|------------|-------|-----------|------------|-------|-----------|------------|-------|------------------------|
| | | | Min | Typ | Max | Min | Typ | Max | Min | Typ | Max | |
| Offset Voltage | V_{OS} | $V_{CM} = 0\text{ V}$ | -400 | +10 | +400 | -700 | +20 | +700 | -750 | +25 | +750 | μV |
| Gain Error | | No Load, $V_{IN} = \pm 10\text{ V}$, $R_S = 0\ \Omega$ | | 0.00004 | 0.008 | | 0.00004 | 0.008 | | 0.001 | 0.008 | % |
| Input Voltage Range | IVR | (Note 1) | ± 20 | | | ± 20 | | | ± 20 | | | V |
| Common-Mode Rejection | CMR | $V_{CM} = \pm 10\text{ V}$ | 85 | 100 | | 80 | 95 | | 80 | 95 | | dB |
| Power Supply Rejection Ratio | PSRR | $V_S = \pm 6\text{ V}$ to $\pm 18\text{ V}$ | | 0.6 | 10 | | 0.6 | 10 | | 0.7 | 10 | $\mu\text{V}/\text{V}$ |
| Output Swing | V_O | $R_L = 2\text{ k}\Omega$ | ± 12 | ± 13.7 | | ± 12 | ± 13.7 | | ± 12 | ± 13.7 | | V |
| Short-Circuit Current Limit | I_{SC} | Output Shorted to Ground | $+45/-15$ | | | $+45/-15$ | | | $+45/-15$ | | | mA |
| Small-Signal Bandwidth (-3 dB) | BW | $R_L = 2\text{ k}\Omega$ | | 3 | | | 3 | | | 3 | | MHz |
| Slew Rate | SR | $R_L = 2\text{ k}\Omega$ | 6 | 9.5 | | 6 | 9.5 | | 6 | 9.5 | | $\text{V}/\mu\text{s}$ |
| Capacitive Load Drive Capability | C_L | No Oscillation | | 300 | | | 300 | | | 300 | | pF |
| Supply Current | I_{SY} | No Load | | 2.5 | 3.5 | | 2.5 | 3.5 | | 2.5 | 3.5 | mA |

NOTES

¹Input voltage range guaranteed by CMR test.

Specifications subject to change without notice.

ELECTRICAL CHARACTERISTICS (@ $V_S = \pm 15\text{ V}$, $-55^\circ\text{C} \leq T_A \leq +125^\circ\text{C}$ for B Grade)

| Parameter | Symbol | Conditions | AMP03B | | | Unit |
|---------------------------------|----------|---|----------|------------|-------|------------------------|
| | | | Min | Typ | Max | |
| Offset Voltage | V_{OS} | $V_{CM} = 0\text{ V}$ | -1500 | +150 | +1500 | μV |
| Gain Error | | No Load, $V_{IN} = \pm 10\text{ V}$, $R_S = 0\ \Omega$ | | 0.0014 | 0.02 | % |
| Input Voltage Range | IVR | | ± 20 | | | V |
| Common-Mode Rejection | CMR | $V_{CM} = \pm 10\text{ V}$ | 75 | 95 | | dB |
| Power Supply Rejection Ratio | PSRR | $V_S = \pm 6\text{ V}$ to $\pm 18\text{ V}$ | | 0.7 | 20 | $\mu\text{V}/\text{V}$ |
| Output Swing | V_O | $R_L = 2\text{ k}\Omega$ | ± 12 | ± 13.7 | | V |
| Slew Rate | SR | $R_L = 2\text{ k}\Omega$ | | 9.5 | | $\text{V}/\mu\text{s}$ |
| Supply Current | I_{SY} | No Load | | 3.0 | 4.0 | mA |

Specifications subject to change without notice.

ELECTRICAL CHARACTERISTICS (@ $V_S = \pm 15\text{ V}$, $-40^\circ\text{C} \leq T_A \leq +85^\circ\text{C}$ for F and G Grades)

| Parameter | Symbol | Conditions | AMP03F | | | AMP03G | | | Unit |
|---------------------------------|----------|---|----------|------------|-------|----------|------------|-------|------------------------|
| | | | Min | Typ | Max | Min | Typ | Max | |
| Offset Voltage | V_{OS} | $V_{CM} = 0\text{ V}$ | -1000 | +100 | +1000 | -2000 | +200 | +2000 | μV |
| Gain Error | | No Load, $V_{IN} = \pm 10\text{ V}$, $R_S = 0\ \Omega$ | | 0.0008 | 0.015 | | 0.002 | 0.02 | % |
| Input Voltage Range | IVR | | ± 20 | | | ± 20 | | | V |
| Common-Mode Rejection | CMR | $V_{CM} = \pm 10\text{ V}$ | 80 | 95 | | 75 | 90 | | dB |
| Power Supply Rejection Ratio | PSRR | $V_S = \pm 6\text{ V}$ to $\pm 18\text{ V}$ | | 0.7 | 15 | | 1.0 | 15 | $\mu\text{V}/\text{V}$ |
| Output Swing | V_O | $R_L = 2\text{ k}\Omega$ | ± 12 | ± 13.7 | | ± 12 | ± 13.7 | | V |
| Slew Rate | SR | $R_L = 2\text{ k}\Omega$ | | 9.5 | | | 9.5 | | $\text{V}/\mu\text{s}$ |
| Supply Current | I_{SY} | No Load | | 2.6 | 4.0 | | 2.6 | 4.0 | mA |

Specifications subject to change without notice.

WAFER TEST LIMITS (@ $V_S = \pm 15\text{ V}$, $T_A = 25^\circ\text{C}$, unless otherwise noted.)*

| Parameter | Symbol | Conditions | AMP03GBC Limit | Unit |
|------------------------------|----------|---|----------------|---------------------|
| Offset Voltage | V_{OS} | $V_S = \pm 18\text{ V}$ | 0.5 | mV max |
| Gain Error | | No Load, $V_{IN} = \pm 10\text{ V}$, $R_S = 0\ \Omega$ | 0.008 | % max |
| Input Voltage Range | IVR | | ± 10 | V min |
| Common-Mode Rejection | CMR | $V_{CM} = \pm 10\text{ V}$ | 80 | dB min |
| Power Supply Rejection Ratio | PSRR | $V_S = \pm 6\text{ V}$ to $\pm 18\text{ V}$ | 8 | $\mu\text{V/V}$ max |
| Output Swing | V_O | $R_L = 2\text{ k}\Omega$ | ± 12 | V max |
| Short-Circuit Current Limit | I_{SC} | Output Shorted to Ground | +45/-15 | mA min |
| Supply Current | I_{SY} | No Load | 3.5 | mA max |

*Electrical tests are performed at wafer probe to the limits shown. Due to variations in assembly methods and normal yield loss, yield after packaging is not guaranteed for standard product dice. Consult factory to negotiate specifications based on dice lot qualifications through sample lot assembly and testing.

ABSOLUTE MAXIMUM RATINGS¹

| | |
|--------------------------------------|---|
| Supply Voltage | $\pm 18\text{ V}$ |
| Input Voltage ² | Supply Voltage |
| Output Short-Circuit Duration | Continuous |
| Storage Temperature Range | |
| P, J Package | -65°C to $+150^\circ\text{C}$ |
| Lead Temperature (Soldering, 60 sec) | 300°C |
| Junction Temperature | 150°C |
| Operating Temperature Range | |
| AMP03B | -55°C to $+125^\circ\text{C}$ |
| AMP03F, AMP03G | -40°C to $+85^\circ\text{C}$ |

| Package Type | θ_{JA} ³ | θ_{JC} | Unit |
|-----------------|----------------------------|---------------|--------------------|
| Header (J) | 150 | 18 | $^\circ\text{C/W}$ |
| 8-Lead PDIP (P) | 103 | 43 | $^\circ\text{C/W}$ |
| 8-Lead SOIC (S) | 155 | 40 | $^\circ\text{C/W}$ |

NOTES

¹Absolute maximum ratings apply to both DICE and packaged parts, unless otherwise noted.

²For supply voltages less than $\pm 18\text{ V}$, the absolute maximum input voltage is equal to the supply voltage.

³ θ_{JA} is specified for worst-case mounting conditions, i.e., θ_{JA} is specified for device in socket for header and PDIP packages and for device soldered to printed circuit board for SOIC package.

ORDERING GUIDE

| Model ¹ | Temperature Range | Package Description | Package Option ² |
|--------------------|---|---------------------|-----------------------------|
| AMP03GP | -40°C to $+85^\circ\text{C}$ | 8-Lead PDIP | P-8 |
| AMP03BJ | -40°C to $+85^\circ\text{C}$ | Header | H-08B |
| AMP03FJ | -40°C to $+85^\circ\text{C}$ | Header | H-08B |
| AMP03BJ/883C | -55°C to $+125^\circ\text{C}$ | Header | H-08B |
| AMP03GS | -40°C to $+85^\circ\text{C}$ | 8-Lead SOIC | S-8 |
| AMP03GS-REEL | -40°C to $+85^\circ\text{C}$ | 8-Lead SOIC | S-8 |
| 5962-9563901MGA | -55°C to $+125^\circ\text{C}$ | Header | H-08B |
| AMP03GBC | | Die | |

NOTES

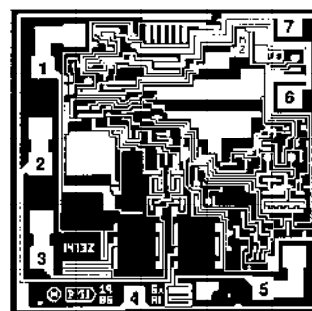
¹Burn-in is available on commercial and industrial temperature range parts in PDIP and header packages.

²Consult factory for /883 data sheet.

CAUTION

ESD (electrostatic discharge) sensitive device. Electrostatic charges as high as 4000 V readily accumulate on the human body and test equipment and can discharge without detection. Although the AMP03 features proprietary ESD protection circuitry, permanent damage may occur on devices subjected to high energy electrostatic discharges. Therefore, proper ESD precautions are recommended to avoid performance degradation or loss of functionality.

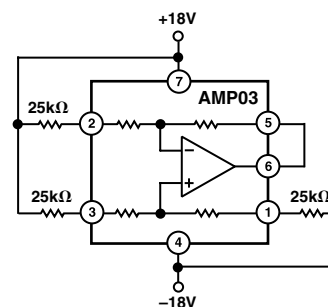
DICE CHARACTERISTICS



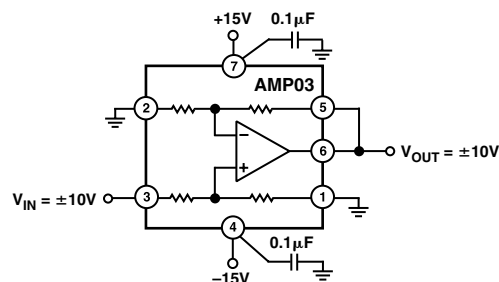
1. REFERENCE
2. -IN
3. +IN
4. -VEE
5. SENSE
6. OUTPUT
7. +VCC
8. NC

DIE SIZE 0.076 inch \times 0.076 inch, 5,776 sq. mm
(1.93 mm \times 1.93 mm, 3.73 sq. mm)

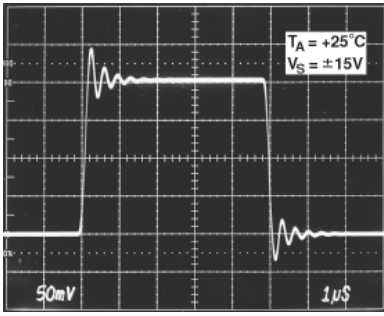
BURN-IN CIRCUIT



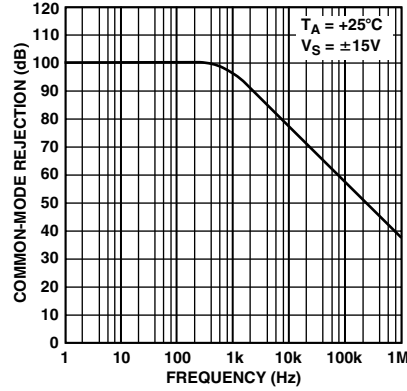
SLEW RATE TEST CIRCUIT



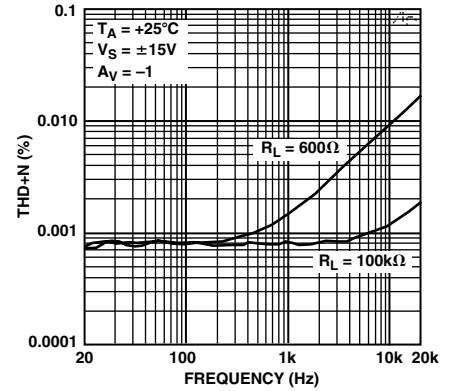
AMP03—Typical Performance Characteristics



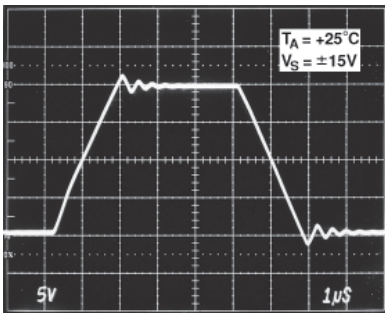
TPC 1. Small Signal Transient Response



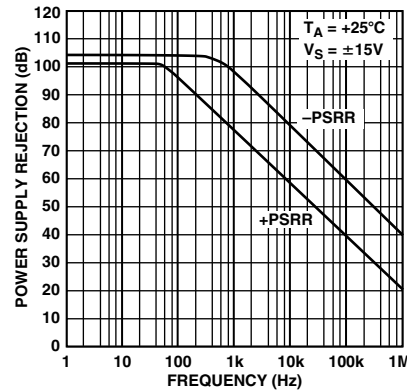
TPC 2. Common-Mode Rejection vs. Frequency



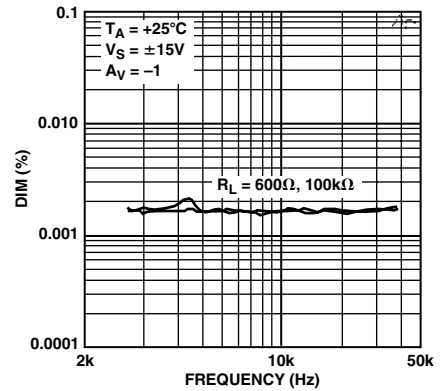
TPC 3. Total Harmonic Distortion vs. Frequency



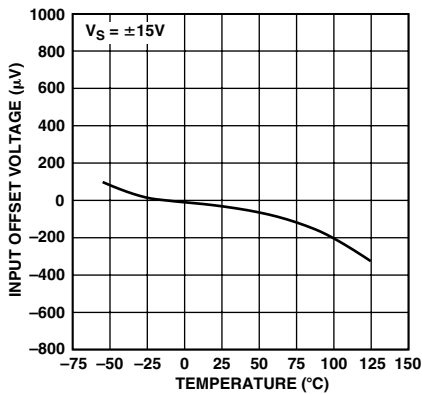
TPC 4. Large Signal Transient Response



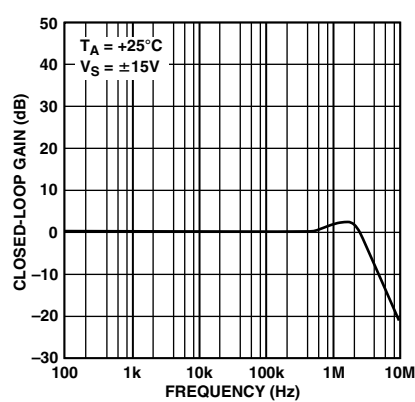
TPC 5. Power Supply Rejection vs. Frequency



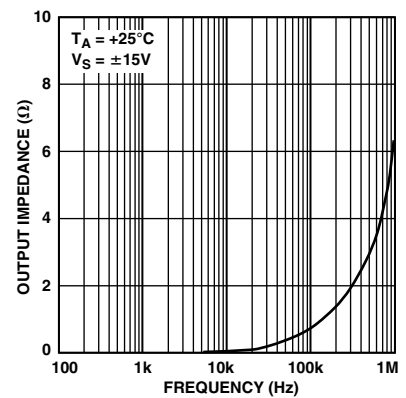
TPC 6. Dynamic Intermodulation Distortion vs. Frequency



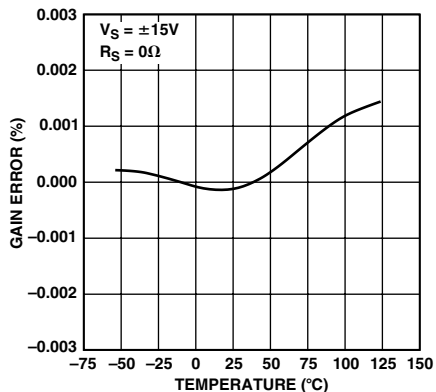
TPC 7. Input Offset Voltage vs. Temperature



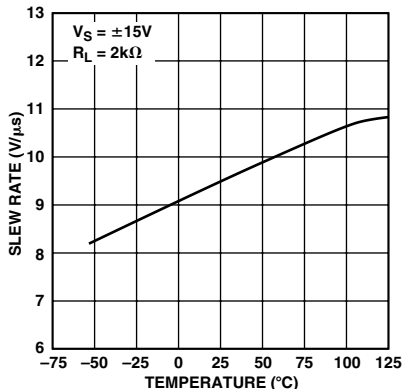
TPC 8. Closed-Loop Gain vs. Frequency



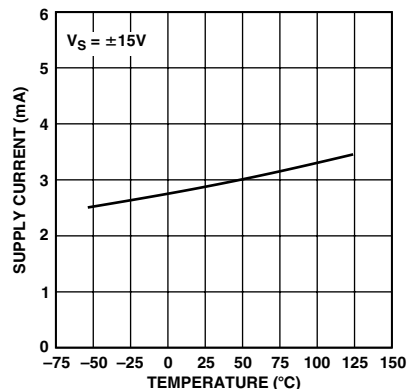
TPC 9. Closed-Loop Output Impedance vs. Frequency



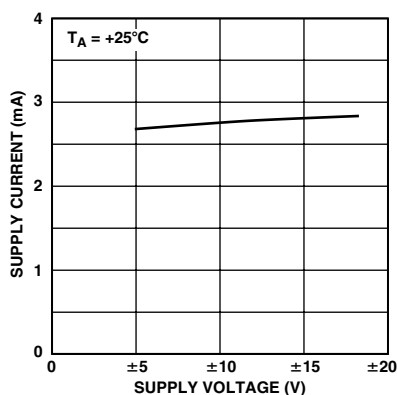
TPC 10. Gain Error vs. Temperature



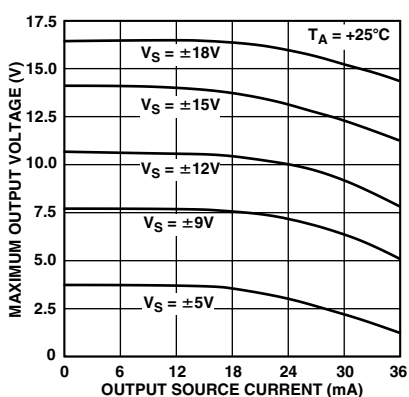
TPC 11. Slew Rate vs. Temperature



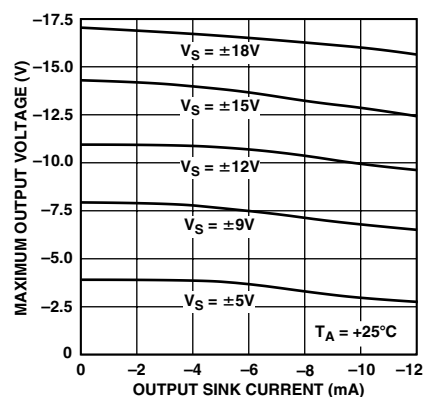
TPC 12. Supply Current vs. Temperature



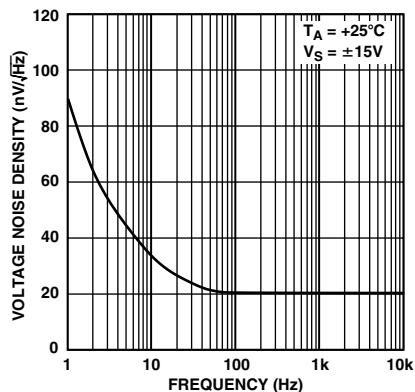
TPC 13. Supply Current vs. Supply Voltage



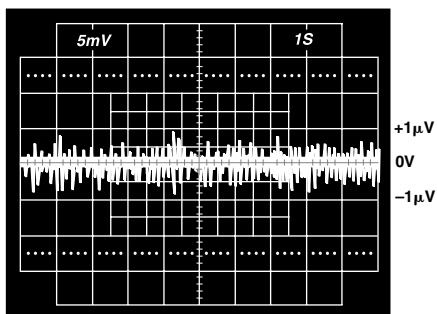
TPC 14. Maximum Output Voltage vs. Output Current (Source)



TPC 15. Maximum Output Voltage vs. Output Current (Sink)

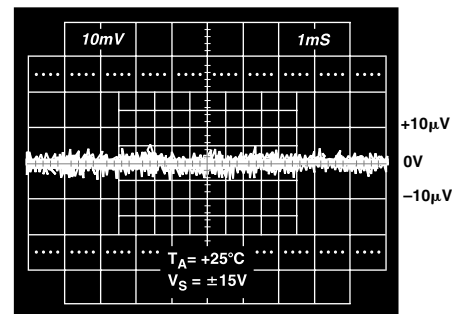


TPC 16. Voltage Noise Density vs. Frequency



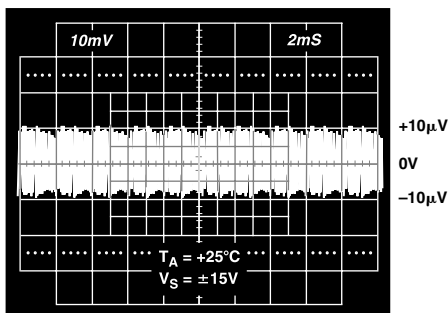
0.1 TO 10Hz PEAK-TO-PEAK NOISE

TPC 17. Low Frequency Voltage Noise



NOTE: EXTERNAL AMPLIFIER GAIN = 1000; THEREFORE, VERTICAL SCALE = 10μV/DIV.

TPC 18. Voltage Noise from 0 kHz to 1 kHz



NOTE: EXTERNAL AMPLIFIER GAIN = 1000; THEREFORE, VERTICAL SCALE = 10μV/DIV.

TPC 19. Voltage Noise from 0 kHz to 10 kHz

AMP03

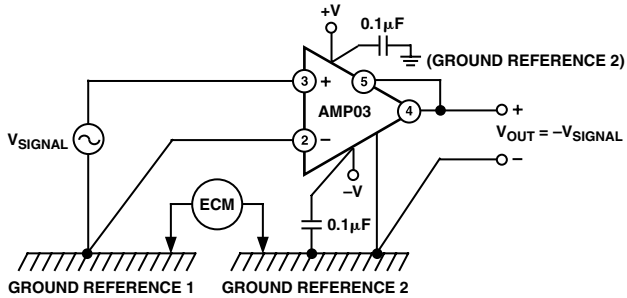


Figure 1. AMP03 Serves to Reject Common-Mode Voltages in Instrumentation Systems. Common-Mode Voltages Occur Due to Ground Current Returns. V_{SIGNAL} and E_{CM} Must Be within the Common-Mode Range of AMP03.

APPLICATIONS INFORMATION

The AMP03 represents a versatile analog building block. In order to capitalize on the fast settling time, high slew rate, and high CMR, proper decoupling and grounding techniques must be employed. Figure 1 illustrates the use of 0.1 μF decoupling capacitors and proper ground connections.

MAINTAINING COMMON-MODE REJECTION

In order to achieve the full common-mode rejection capability of the AMP03, the source impedance must be carefully controlled. Slight imbalances of the source resistance will result in a degradation of dc CMR—even a 5 Ω imbalance will degrade CMR by 20 dB. Also, the matching of the reactive source impedance must be matched in order to preserve the CMRR over frequency.

APPLICATION CIRCUITS

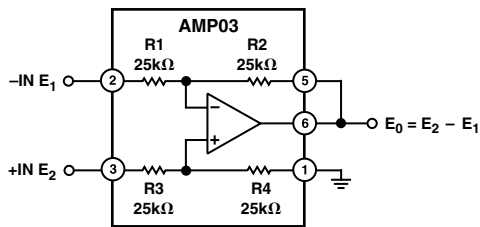


Figure 2. Precision Difference Amplifier. Rejects Common-Mode Signal = $(E_1 + E_2)/2$ by 100 dB

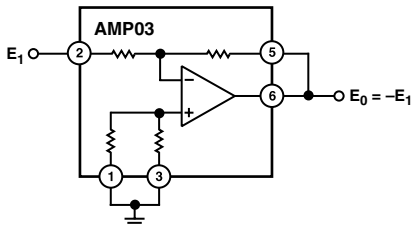


Figure 3. Precision Unity-Gain Inverting Amplifier

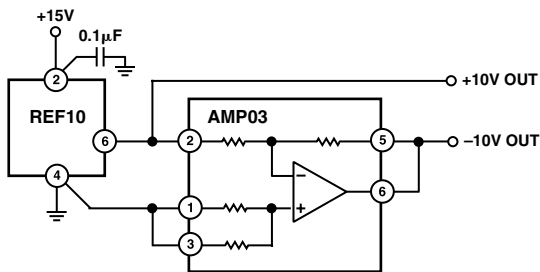


Figure 4. ± 10 V Precision Voltage Reference

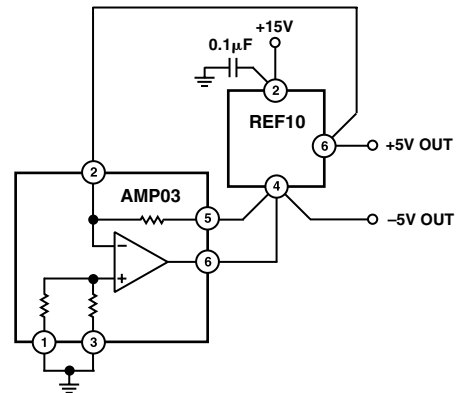


Figure 5. ± 5 V Precision Voltage Reference

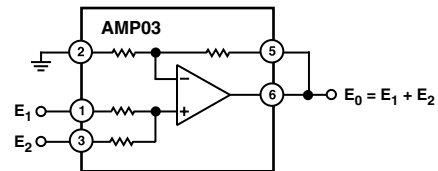


Figure 6. Precision Summing Amplifier

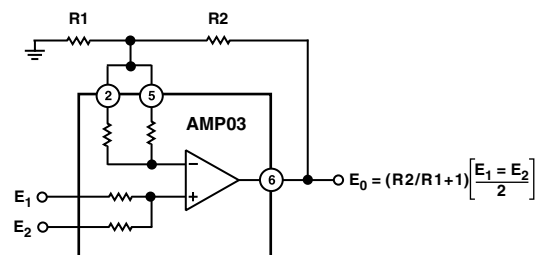


Figure 7. Precision Summing Amplifier with Gain

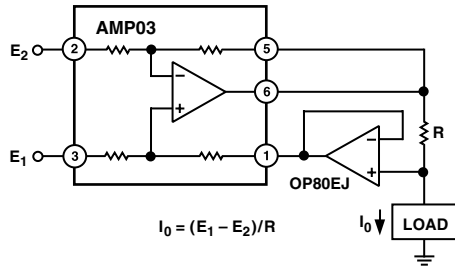


Figure 8. Differential Input Voltage-to-Current Converter for Low I_{OUT} . OP80EJ maintains 250 fA max input current, allowing I_0 to be less than 1 pA.

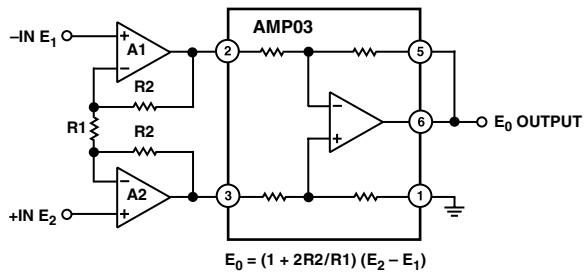


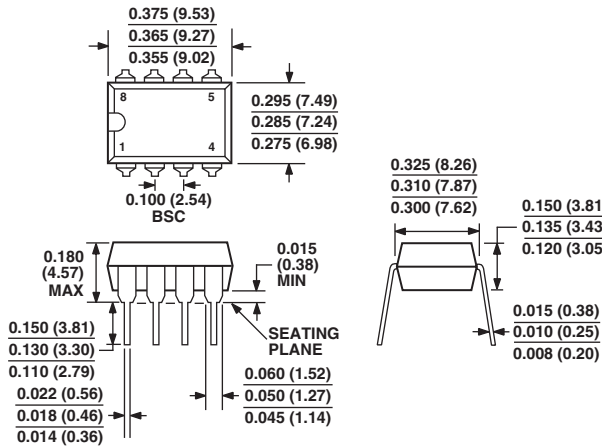
Figure 9. Suitable Instrumentation Amplifier Requirements Can Be Addressed by Using an Input Stage Consisting of A1, A2, R1, and R2. The following matrix suggests a suitable amplifier.

| System Design Requirement | Suggested Op Amp For A1 and A2 |
|---|---|
| Source Impedance Low, Need Low Voltage Noise Performance | OP27, OP37 OP227 (Dual Matched) OP270 (Dual) OP271 OP470 OP471 |
| Source Impedance High ($R_S \geq 15 \text{ k}\Omega$). Need Low Current Noise | OP80 OP41 OP43 OP249 OP97 |
| Require Ultrahigh Input Impedance | OP80 OP97 OP41 OP43 |
| Need Wider Bandwidth and High Speed | OP42 OP43 OP249 |

OUTLINE DIMENSIONS

8-Lead Plastic Dual In-Line Package [PDIP] [P Suffix] (N-8)

Dimensions shown in inches and (millimeters)

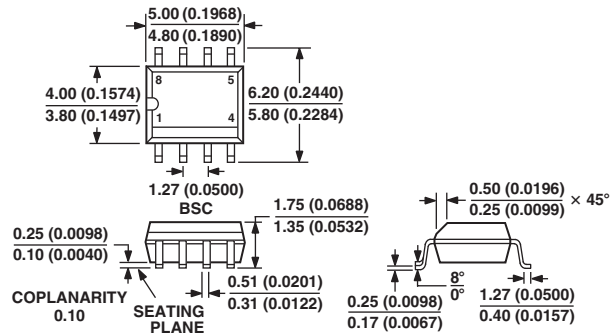


COMPLIANT TO JEDEC STANDARDS MO-095AA

CONTROLLING DIMENSIONS ARE IN INCHES; MILLIMETER DIMENSIONS (IN PARENTHESES) ARE ROUNDED-OFF INCH EQUIVALENTS FOR REFERENCE ONLY AND ARE NOT APPROPRIATE FOR USE IN DESIGN

8-Lead Small Outline Package [SOIC] [S Suffix] (R-8)

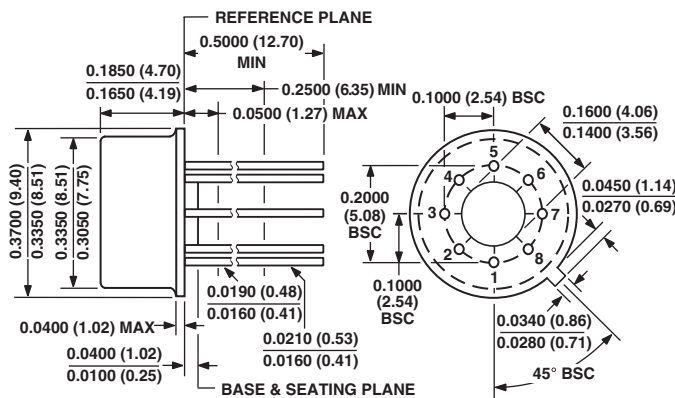
Dimensions shown in millimeters and (inches)



COMPLIANT TO JEDEC STANDARDS MS-012AA
CONTROLLING DIMENSIONS ARE IN MILLIMETERS; INCH DIMENSIONS (IN PARENTHESES) ARE ROUNDED-OFF MILLIMETER EQUIVALENTS FOR REFERENCE ONLY AND ARE NOT APPROPRIATE FOR USE IN DESIGN

8-Lead Metal Can [TO-99] [J Suffix] (H-08B)

Dimensions shown in inches and (millimeters)



COMPLIANT TO JEDEC STANDARDS MO-002AK

CONTROLLING DIMENSIONS ARE IN INCHES; MILLIMETERS DIMENSIONS (IN PARENTHESES) ARE ROUNDED-OFF INCH EQUIVALENTS FOR REFERENCE ONLY AND ARE NOT APPROPRIATE FOR USE IN DESIGN

Revision History

| Location | Page |
|---|------|
| 12/03—Data Sheet changed from REV. E to REV. F. | |
| Changes to ELECTRICAL CHARACTERISTICS | 2 |
| Changes to ORDERING GUIDE | 3 |
| Updated OUTLINE DIMENSIONS | 7 |