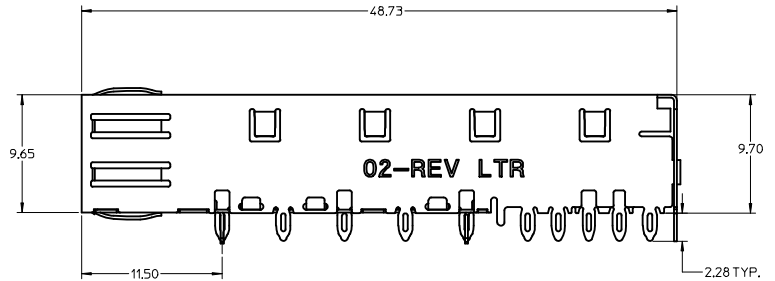
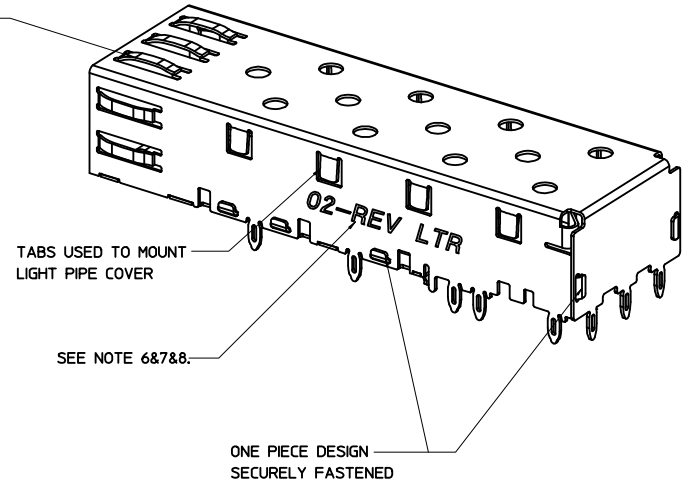


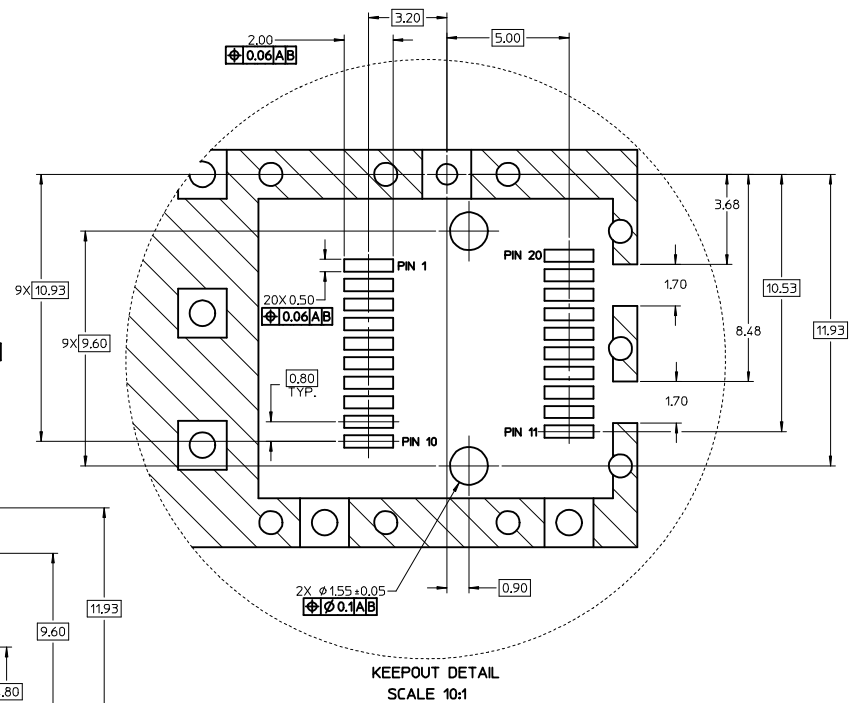
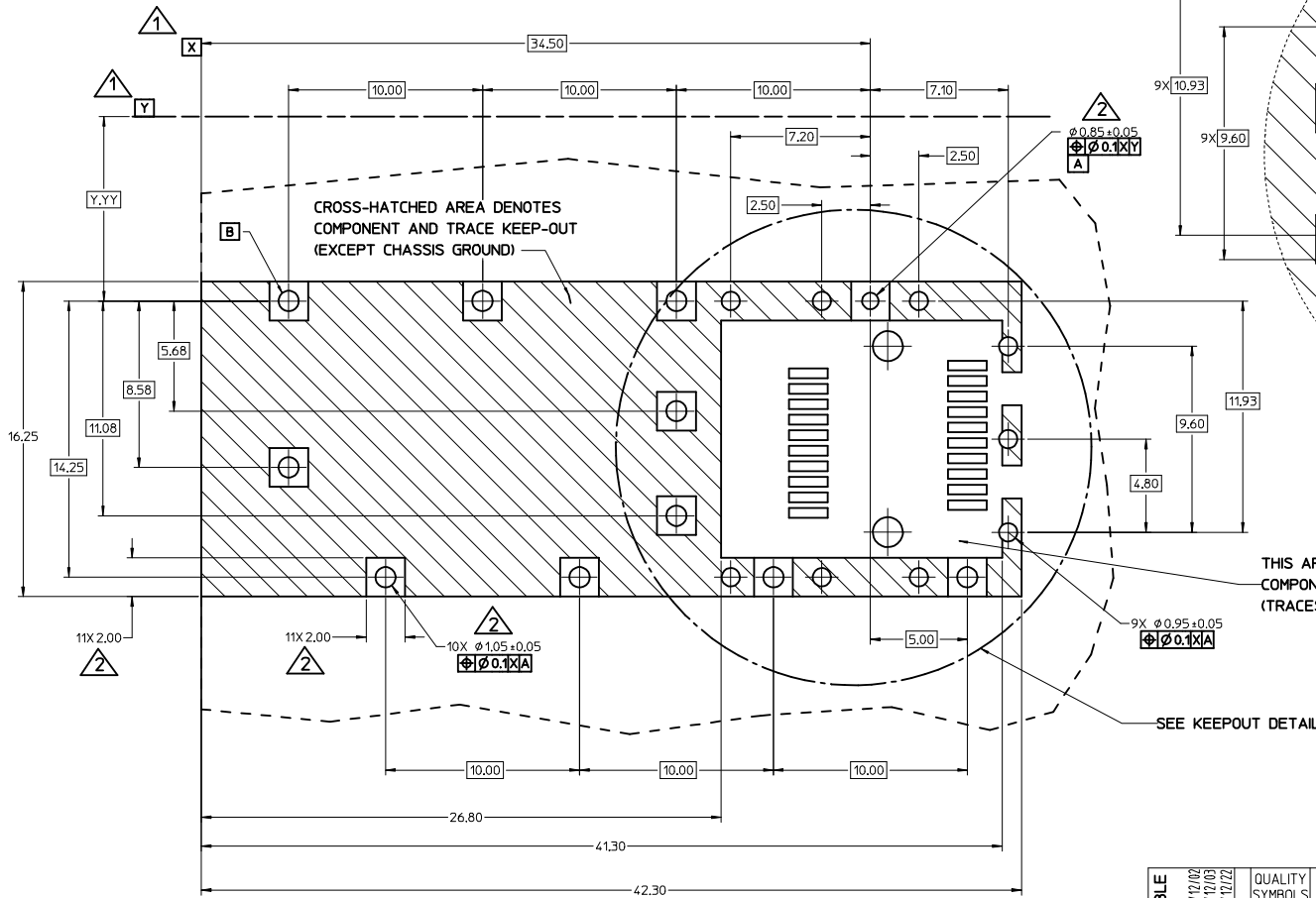
SPRING FINGER GASKET WITH TWO POINTS OF CONTACT. COMPLIES WITH (SFP) MSA BOARD AND BEZEL LOCATIONS.



- NOTES:
- PRESS FIT LEGS, 2.28mm LONG. 1.57mm MINIMUM PCB THICKNESS.
  - THIS CAGE IS FOR SINGLE SIDED USE ONLY.
  - CAN BE USED WITH THE FOLLOWING LIGHT PIPE PART NUMBERS:  
747260001 - LIGHT PIPE FROM BACK TO TOP (REFER TO DOCUMENT SD-74726-001)  
747260002 - LIGHT PIPE FROM SIDE TO TOP (REFER TO DOCUMENT SD-74726-002)
  - MATERIAL: COPPER ALLOY  
PLATING: PRE-PLATED WITH NICKEL
  - NO RoHS EXEMPTIONS.
  - REVISION LETTER IS FOLLOWING MOLEX 3D MODEL.
  - INSERT TO CHANGE ENGRAVING FOR LAST TWO DIGITS OF PART NUMBER OR 3D REVISION.
  - INSERT TO IDENTIFY ADDITIONAL TOOLING STARTING WITH TOOL #2 AS FOLLOWS:  
LAST TWO DIGITS OF PART NUMBER, TOOL NUMBER AND REVISION LETTER (E.G., 02-3J)

|   |                       |  |                      |                           |  |                        |   |
|---|-----------------------|--|----------------------|---------------------------|--|------------------------|---|
| SEE REVISION TABLE<br>IEC NO: CPG2015-2800<br>DRAWN BY: DRWN:LUZ0<br>CHECKED BY: CHYKSYANG16<br>APPROVED BY: APPR:RCHEN08<br>DATE: 2014/12/02<br>DATE: 2014/12/03<br>DATE: 2014/12/22 | QUALITY SYMBOLS       | GENERAL TOLERANCES (UNLESS SPECIFIED)                | DIMENSION STYLE      | SCALE                     | DESIGN UNITS                                     | THIRD ANGLE PROJECTION |   |
|   | ▽=0                   | mm INCH  | MM ONLY              | 5:1                       | METRIC   |                        |   |
|   | ▽=0                   | 4 PLACES ± --- ± ---                                 | DRAWN BY: CCOX       | DATE: 2007/01/18          | TITLE: SFP ONE PIECE CAGE PRESS-FIT (0.090 LEGS) |                        |   |
|   | ▽=0                   | 3 PLACES ± --- ± ---                                 | CHECKED BY: RMAHMOOD | DATE: 2007/01/18          | MATERIAL NO: 747370002                           |                        |   |
|   | 2 PLACES ± 0.13 ± --- | APPROVED BY: RMAHMOOD                                | DATE: 2007/01/18     | DOCUMENT NO: SD-74737-002 |  | SHEET NO: 1 OF 4       |   |
|   | 1 PLACE ± 0.25 ± ---  | DRAFT WHERE APPLICABLE MUST REMAIN WITHIN DIMENSIONS |                      |                           |  |                        | THIS DRAWING CONTAINS INFORMATION THAT IS PROPRIETARY TO MOLEX INCORPORATED AND SHOULD NOT BE USED WITHOUT WRITTEN PERMISSION |
|   | 0 PLACE ± ±           | ANGULAR ± 1 °  |                      |                           |  |                        |   |

- 1. DATUM AND BASIC DIMENSIONS ESTABLISHED BY CUSTOMER.
- 2. PADS AND VIAS ARE CHASSIS GROUND.
- 3. HOLE LAYOUT SHOWN IS FOR SINGLE SIDED MOUNTING ONLY.
- 4. CONNECTOR PAD LAYOUT PER SFP MSA, WILL ACCOMMODATE MOLEX CONNECTOR SERIES 74441 OR EQUIVALENT.

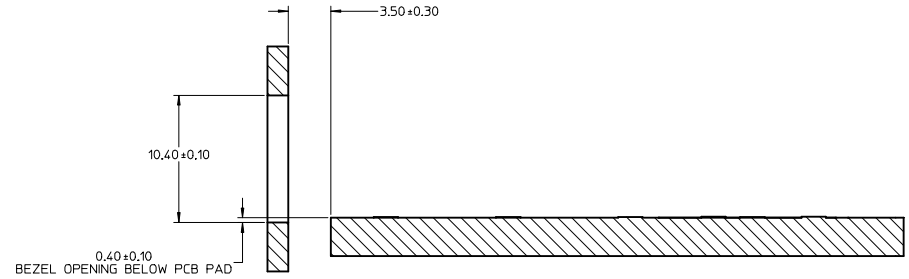
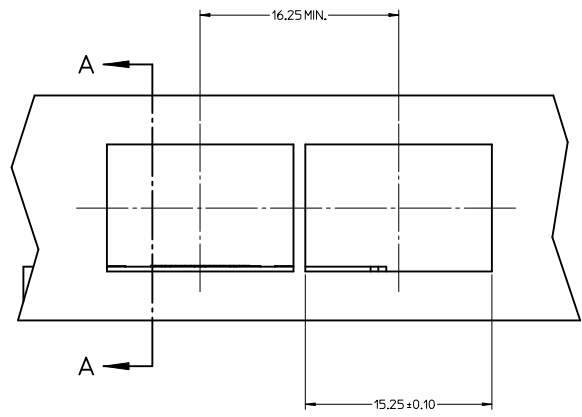
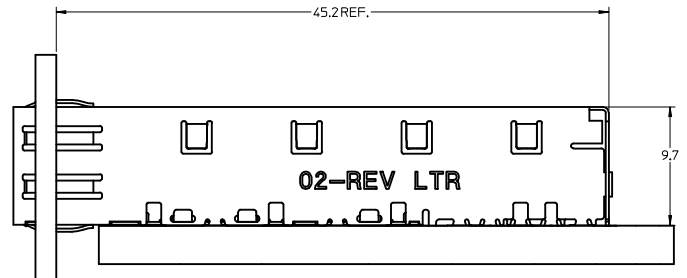


THIS AREA DENOTES COMPONENT KEEP-OUT (TRACES ALLOWED)

SEE KEEPOUT DETAIL

|  |  |                                       |                 |   |                        |  |
|--|--|---------------------------------------|-----------------|---|------------------------|--|
| <b>SEE REVISION TABLE</b><br>IEC NO: CPG2015-2800<br>DRAWN BY: DRWNLU20<br>CHYKDYANG16<br>APPR:RCHEN08<br>2014/12/02<br>2014/12/03<br>2014/12/22 | QUALITY SYMBOLS                                      | GENERAL TOLERANCES (UNLESS SPECIFIED) | DIMENSION STYLE | SCALE   | DESIGN UNITS           | THIRD ANGLE PROJECTION                           |
|  | ▽=0  | mm                                    | MM ONLY         | 8:1   | METRIC                 | ☉  |
|  | ▽=0  | INCH                                  | 4 PLACES ± ---  | DRAWN BY: CCOX  | DATE: 2007/01/18       | TITLE: SFP ONE PIECE CAGE PRESS-FIT (0.090 LEGS) |
|  | ▽=0  | ANGULAR ± 1 °                         | 3 PLACES ± ---  | CHECKED BY: RMAHMOOD  | DATE: 2007/01/18       | APPROVED BY: RMAHMOOD                            |
| ▽=0  | DRAFT WHERE APPLICABLE MUST REMAIN WITHIN DIMENSIONS | 2 PLACES ± 0.13                       | 1 PLACE ± 0.25  | 0 PLACE ±   | MATERIAL NO: 747370002 | DOCUMENT NO: SD-74737-002                        |
|  |  |                                       |                 | THIS DRAWING CONTAINS INFORMATION THAT IS PROPRIETARY TO MOLEX INCORPORATED AND SHOULD NOT BE USED WITHOUT WRITTEN PERMISSION |                        | SHEET NO: 2 OF 4                                 |

20 19 18 17 16 15 14 13 12 11 10 9 8 7 6 5 4 3 2 1



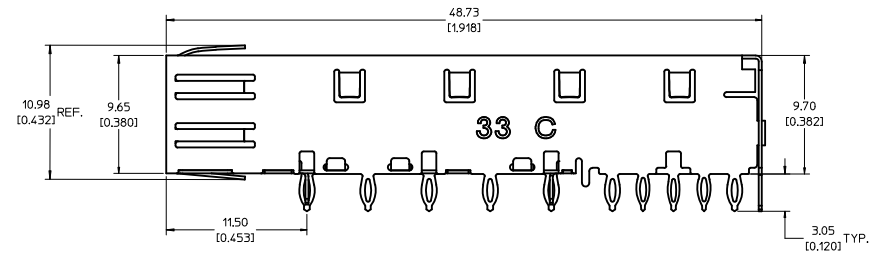
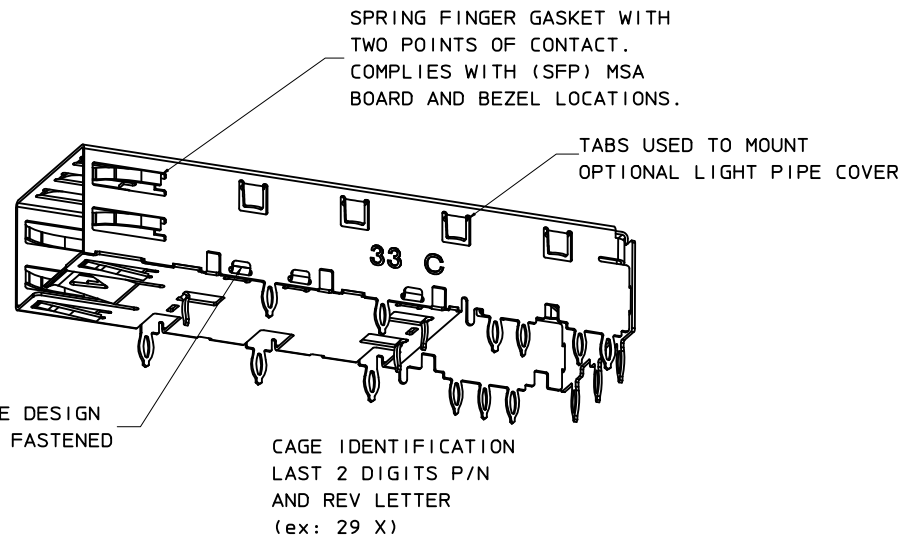
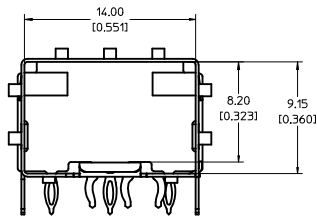
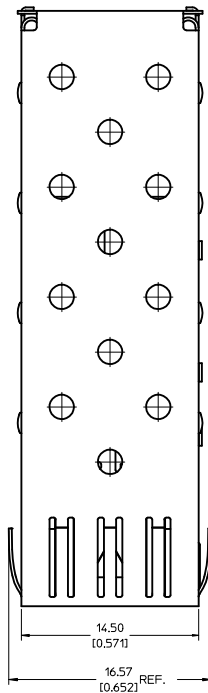
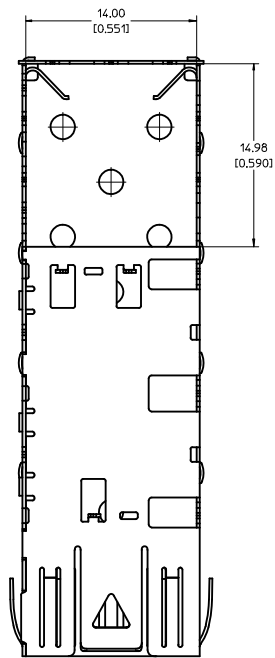
SECTION A-A

| <b>SEE REVISION TABLE</b><br>EC NO: CPG2015-2800<br>DRW: LUL20 2014/12/02<br>CHK: DSYANG 2014/12/03<br>APPR: RCHEN08 2014/12/22 | QUALITY SYMBOLS<br>▽=0<br>▽=0<br>▽=0 | GENERAL TOLERANCES (UNLESS SPECIFIED)<br><table border="1"> <thead> <tr> <th></th> <th>mm</th> <th>INCH</th> </tr> </thead> <tbody> <tr> <td>4 PLACES</td> <td>± 0.15</td> <td>± 0.005</td> </tr> <tr> <td>3 PLACES</td> <td>± 0.20</td> <td>± 0.008</td> </tr> <tr> <td>2 PLACES</td> <td>± 0.25</td> <td>± 0.010</td> </tr> <tr> <td>1 PLACE</td> <td>± 0.30</td> <td>± 0.012</td> </tr> <tr> <td>0 PLACE</td> <td>± 0.40</td> <td>± 0.016</td> </tr> </tbody> </table> |                            | mm  | INCH | 4 PLACES | ± 0.15 | ± 0.005 | 3 PLACES | ± 0.20 | ± 0.008 | 2 PLACES | ± 0.25 | ± 0.010 | 1 PLACE | ± 0.30 | ± 0.012 | 0 PLACE | ± 0.40 | ± 0.016 | DIMENSION STYLE<br><b>MM ONLY</b> | SCALE<br><b>5:1</b> | DESIGN UNITS<br><b>METRIC</b> | THIRD ANGLE PROJECTION |
|---|--------------------------------------|---|----------------------------|---|------|----------|--------|---------|----------|--------|---------|----------|--------|---------|---------|--------|---------|---------|--------|---------|-----------------------------------|---------------------|-------------------------------|------------------------|
|   |                                      | mm  | INCH                       |   |      |          |        |         |          |        |         |          |        |         |         |        |         |         |        |         |                                   |                     |                               |                        |
|   | 4 PLACES                             | ± 0.15  | ± 0.005                    |   |      |          |        |         |          |        |         |          |        |         |         |        |         |         |        |         |                                   |                     |                               |                        |
|   | 3 PLACES                             | ± 0.20  | ± 0.008                    |   |      |          |        |         |          |        |         |          |        |         |         |        |         |         |        |         |                                   |                     |                               |                        |
| 2 PLACES  | ± 0.25                               | ± 0.010   |                            |   |      |          |        |         |          |        |         |          |        |         |         |        |         |         |        |         |                                   |                     |                               |                        |
| 1 PLACE   | ± 0.30                               | ± 0.012   |                            |   |      |          |        |         |          |        |         |          |        |         |         |        |         |         |        |         |                                   |                     |                               |                        |
| 0 PLACE   | ± 0.40                               | ± 0.016   |                            |   |      |          |        |         |          |        |         |          |        |         |         |        |         |         |        |         |                                   |                     |                               |                        |
| DRAWN BY<br>CCOX  | DATE<br>2007/01/18                   | TITLE<br><b>SFP ONE PIECE CAGE PRESS-FIT (0.090 LEGS)</b>   |                            |   |      |          |        |         |          |        |         |          |        |         |         |        |         |         |        |         |                                   |                     |                               |                        |
| CHECKED BY<br>RMAHMOOD  | DATE<br>2007/01/18                   | MATERIAL NO.<br><b>747370002</b>  |                            |   |      |          |        |         |          |        |         |          |        |         |         |        |         |         |        |         |                                   |                     |                               |                        |
| APPROVED BY<br>RMAHMOOD   | DATE<br>2007/01/18                   | DOCUMENT NO.<br><b>SD-74737-002</b>   | SHEET NO.<br><b>3 OF 4</b> | THIS DRAWING CONTAINS INFORMATION THAT IS PROPRIETARY TO MOLEX INCORPORATED AND SHOULD NOT BE USED WITHOUT WRITTEN PERMISSION |      |          |        |         |          |        |         |          |        |         |         |        |         |         |        |         |                                   |                     |                               |                        |

19 18 17 16 15 14 13 12 11 10 9 8 7 6 5 4 3 2 1

| DATE       | REV | REVISION TABLE  |
|------------|-----|---|
| 2007/01/17 | A   | INITIAL RELEASE   |
| 2007/01/24 | B   | UPDATED VIEWS   |
| 2007/02/08 | C   | ADDED NOTE 5  |
| 2007/03/06 | D   | ADDED SHEETS 2 AND 3  |
| 2007/01/23 | E   | UPDATED 2D VIEWS TO REFLECT CHG'S MADE TO EM-74737-002 REV E.   |
| 2007/04/25 | F   | [1] ADDED REV SHEET, [2] UPDATED REV NOTES A-D, [3] UPDATED DRAWING TO REFLECT CHG'S MADE TO EM-74737-002-ASSY REV D, [4] ON SHT1 ROTATED BTM_VIEW 180 DEGREES.   |
| 2007/11/27 | G   | [1] UPDATED VIEWS TO MATCH EM-74737-002-ASSY REV E.   |
| 2014/12/02 | H   | 1. ADDED *MM 3D MODEL: EM-74737-002-ASSY* ON LEFT TOP CORNER. [SHEET 1]<br>2. ADDED NOTE 6, 7, 8. [SHEET 1]<br>3. CHANGED NOTE5 TO *NO RoHS EXEMPTIONS*. [SHEET 1]<br>4. REMOVED ALL INCH UNIT. [SHEET 1~3] |
|            |     |   |
|            |     |   |

|   |                 |  |   |                                       |  |  |
|---|-----------------|--|---|---------------------------------------|--|--|
| <b>SEE REVISION TABLE</b><br>IEC NO: CPG2015-2800<br>DRAWN BY: DRWNLJL20 2014/12/02<br>CHECKED BY: CHYKOSYANG16 2014/12/03<br>APPROVED BY: APPRRCHEON8 2014/12/22<br>REV: | QUALITY SYMBOLS | GENERAL TOLERANCES (UNLESS SPECIFIED)                | DIMENSION STYLE   | SCALE                                 | DESIGN UNITS                           | THIRD ANGLE PROJECTION                           |
|   | ▽=0             | 4 PLACES ± mm INCH                                   | MM ONLY   | 1:1                                   | METRIC                                 | ☉  |
|   | ▽=0             | 3 PLACES ± 0.13                                      |   |                                       |  |  |
|   | ▽=0             | 2 PLACES ± 0.25                                      |   |                                       |  |  |
|   | ANGULAR ± 1 °   | DRAFT WHERE APPLICABLE MUST REMAIN WITHIN DIMENSIONS | DRAWN BY: CCOX DATE: 2007/01/18   | CHECKED BY: RMAHMOOD DATE: 2007/01/18 | APPROVED BY: RMAHMOOD DATE: 2007/01/18 | TITLE: SFP ONE PIECE CAGE PRESS-FIT (0.090 LEGS) |
|   |                 |  | MATERIAL NO: 747370002  | DOCUMENT NO: SD-74737-002             | SHEET NO: 4 OF 4                       |  |
|   |                 |  | THIS DRAWING CONTAINS INFORMATION THAT IS PROPRIETARY TO MOLEX INCORPORATED AND SHOULD NOT BE USED WITHOUT WRITTEN PERMISSION |                                       |  |  |



**NOTES:**

1. PRESS FIT LEGS, 0.120 INCHES LONG.  
1.57 [0.062] MINIMUM PCB THICKNESS.
2. THIS CAGE IS FOR SINGLE SIDED USE ONLY.
3. CAN BE USED WITH THE FOLLOWING LIGHT PIPE PART NUMBERS:  
747260001 - LIGHT PIPE FROM BACK TO TOP  
(REFER TO DOCUMENT SD-74726-001)  
747260002 - LIGHT PIPE FROM SIDE TO TOP  
(REFER TO DOCUMENT SD-74726-002)
4. MATERIAL: COPPER ALLOY  
PLATING: PRE-PLATED WITH NICKEL
5. THIS PART MEETS THE RESTRICTION OF HAZARDOUS SUBSTANCES IN ELECTRICAL AND ELECTRONIC EQUIPMENT (ROHS) DIRECTIVE (2002/95/EC).

| <b>REV DIMS-CAGE REV</b><br>EC NO: USY2010-0515<br>DRAWN BY: CHYOKI JANOTA<br>APPROV: K JANOTA<br>2010/04/27<br>2010/05/04 | <b>QUALITY SYMBOLS</b><br>▽=0<br>▽=0 | <b>GENERAL TOLERANCES (UNLESS SPECIFIED):</b><br><table border="1"> <tr> <th></th> <th>mm</th> <th>INCH</th> </tr> <tr> <td>4 PLACES</td> <td>±0.05</td> <td>±0.002</td> </tr> <tr> <td>3 PLACES</td> <td>±0.025</td> <td>±0.001</td> </tr> <tr> <td>2 PLACES</td> <td>±0.13</td> <td>±0.01</td> </tr> <tr> <td>1 PLACE</td> <td>±0.25</td> <td>±0.01</td> </tr> </table> |                           |                           | mm                        | INCH                      | 4 PLACES | ±0.05 | ±0.002 | 3 PLACES | ±0.025 | ±0.001 | 2 PLACES | ±0.13 | ±0.01 | 1 PLACE | ±0.25 | ±0.01 | <b>DIMENSION STYLE</b><br>MM/IN | <b>SCALE</b><br>5:1 | <b>DESIGN UNITS</b><br>METRIC | THIRD ANGLE PROJECTION |
|--|--------------------------------------|---|---------------------------|---------------------------|---------------------------|---------------------------|----------|-------|--------|----------|--------|--------|----------|-------|-------|---------|-------|-------|---------------------------------|---------------------|-------------------------------|------------------------|
|  |                                      |   | mm                        | INCH                      |                           |                           |          |       |        |          |        |        |          |       |       |         |       |       |                                 |                     |                               |                        |
| 4 PLACES   | ±0.05                                | ±0.002  |                           |                           |                           |                           |          |       |        |          |        |        |          |       |       |         |       |       |                                 |                     |                               |                        |
| 3 PLACES   | ±0.025                               | ±0.001  |                           |                           |                           |                           |          |       |        |          |        |        |          |       |       |         |       |       |                                 |                     |                               |                        |
| 2 PLACES   | ±0.13                                | ±0.01   |                           |                           |                           |                           |          |       |        |          |        |        |          |       |       |         |       |       |                                 |                     |                               |                        |
| 1 PLACE  | ±0.25                                | ±0.01   |                           |                           |                           |                           |          |       |        |          |        |        |          |       |       |         |       |       |                                 |                     |                               |                        |
| <b>DRAFT WHERE APPLICABLE MUST REMAIN WITHIN DIMENSIONS</b>  |                                      | <b>MATERIAL NO.</b><br>747370033  | <b>DATE</b><br>2009/09/28 | <b>DATE</b><br>2009/09/28 | <b>DATE</b><br>2009/09/28 | <b>DATE</b><br>2009/09/28 |          |       |        |          |        |        |          |       |       |         |       |       |                                 |                     |                               |                        |

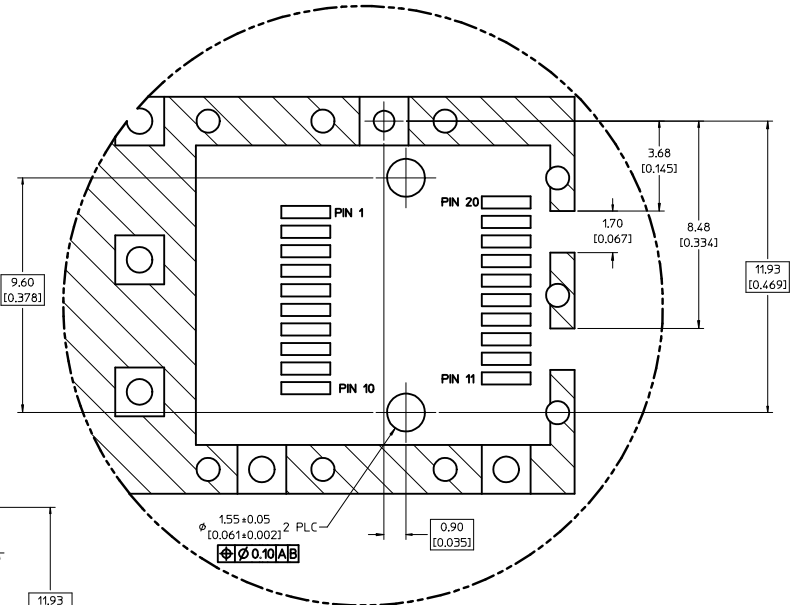
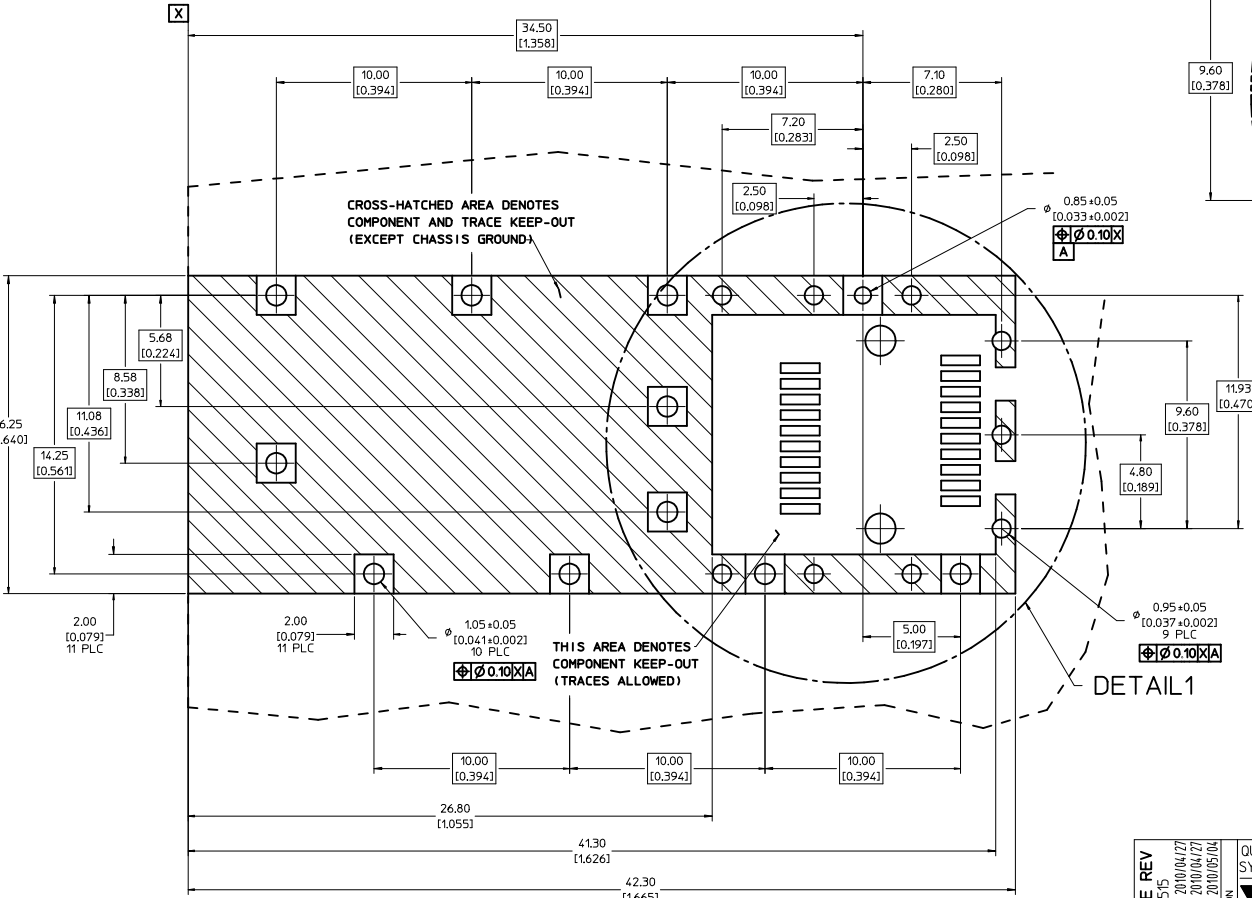
TITLE: SFP ONE PIECE CAGE PRESS-FIT (0.120 LEGS) W/ MODIFIED LATCH TANG

MOLEX INCORPORATED

DOCUMENT NO: SD-74737-0033

SHEET NO. 1 OF 3

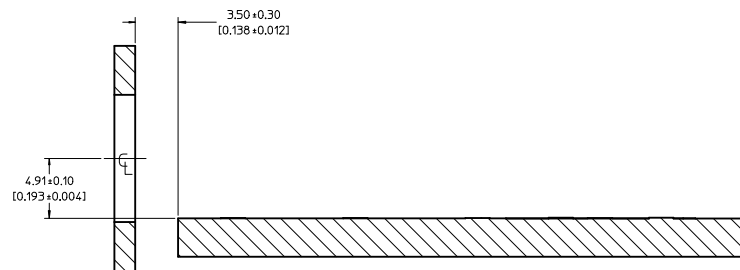
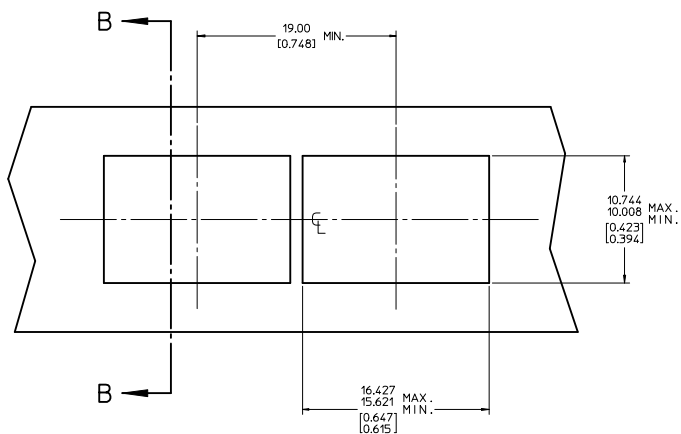
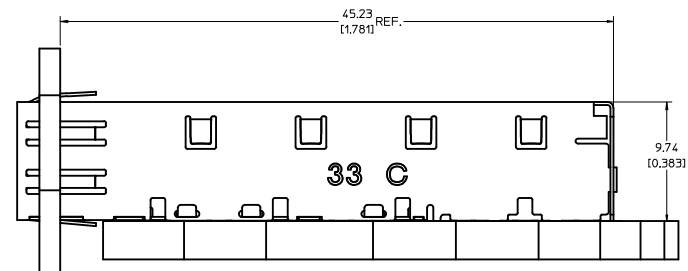
1. PADS AND VIAS ARE CHASSIS GROUND.
2. HOLE LAYOUT SHOWN IS FOR SINGLE SIDED MOUNTING ONLY.
3. CONNECTOR PAD LAYOUT PER SFP MSA, WILL ACCOMMODATE MOLEX CONNECTOR SERIES 74441 OR EQUIVALENT.



DETAIL 1  
SCALE 10:1

|   |                                      |   |                      |                                 |                               |                               |                        |                    |                        |                    |                         |                    |   |
|---|--------------------------------------|---|----------------------|---------------------------------|-------------------------------|-------------------------------|------------------------|--------------------|------------------------|--------------------|-------------------------|--------------------|---|
| <b>REV DIMS-CAGE REV</b><br>IEC NO: USY2010-0515<br>DRAWN/SECRET 2010/04/27<br>CHKD/K.JANITA 2010/04/27<br>APPR/K.JANITA 2010/05/04 | <b>QUALITY SYMBOLS</b><br>▽=0<br>▽=0 | <b>GENERAL TOLERANCES (UNLESS SPECIFIED)</b>  |                      | <b>DIMENSION STYLE</b><br>MM/IN | <b>SCALE</b><br>8:1           | <b>DESIGN UNITS</b><br>METRIC | THIRD ANGLE PROJECTION |                    |                        |                    |                         |                    |   |
|   |                                      | 4 PLACES ±--- ±---  | 3 PLACES ±--- ±0.005 | 2 PLACES ±0.13 ±0.01            | 1 PLACE ±0.25 ±---            | ANGULAR ± 1 °                 | DRAWN BY<br>JRESENDE   | DATE<br>2009/09/28 | CHECKED BY<br>JRESENDE | DATE<br>2009/09/28 | APPROVED BY<br>JRESENDE | DATE<br>2009/09/28 | TITLE<br>SFP ONE PIECE CAGE<br>PRESS-FIT (0.120 LEGS)<br>W/ MODIFIED LATCH TANG |
|   |                                      | DRAFT WHERE APPLICABLE<br>MUST REMAIN<br>WITHIN DIMENSIONS  |                      | MATERIAL NO.<br>747370033       | DOCUMENT NO.<br>SD-74737-0033 | SHEET NO.<br>2 OF 3           | MOLEX INCORPORATED     |                    |                        |                    |                         |                    |   |
|   |                                      | THIS DRAWING CONTAINS INFORMATION THAT IS PROPRIETARY TO MOLEX INCORPORATED AND SHOULD NOT BE USED WITHOUT WRITTEN PERMISSION |                      |                                 |                               |                               |                        |                    |                        |                    |                         |                    |   |

20 19 18 17 16 15 14 13 12 11 10 9 8 7 6 5 4 3 2 1



SECTION B-B

|   |  |  |                                      |   |                     |   |
|---|--|--|--------------------------------------|---|---------------------|---|
| <b>REV DIMS-CAGE REV</b><br>IEC NO: USY2010-0515<br>DRAWN BY: CHYKOKI ANOTA<br>CHECKED BY: APPR:KJANOTA<br>DATE: 2010/04/27<br>DATE: 2010/05/04 | QUALITY SYMBOLS  | GENERAL TOLERANCES (UNLESS SPECIFIED)  | DIMENSION STYLE                      | SCALE   | DESIGN UNITS        | THIRD ANGLE PROJECTION  |
|   | ▽=0<br>▽=0   | mm INCH<br>4 PLACES ± --- ± ---<br>3 PLACES ± --- ± 0.005<br>2 PLACES ± 0.13 ± 0.01<br>1 PLACE ± 0.25 ± ---<br>ANGULAR ± 1 ° | MM/IN                                | 5:1   | METRIC              | DRAWN BY: JRESENDE<br>CHECKED BY: JRESENDE<br>APPROVED BY: JRESENDE<br>DATE: 2009/09/28<br>DATE: 2009/09/28<br>DATE: 2009/09/28 |
|   | DRAFT WHERE APPLICABLE<br>MUST REMAIN<br>WITHIN DIMENSIONS   | MATERIAL NO:<br><b>747370033</b>   | DOCUMENT NO:<br><b>SD-74737-0033</b> | TITLE:<br><b>SFP ONE PIECE CAGE<br/>                 PRESS-FIT (0.120 LEGS)<br/>                 W/ MODIFIED LATCH TANG</b> | SHEET NO:<br>3 OF 3 |   |
|   | THIS DRAWING CONTAINS INFORMATION THAT IS PROPRIETARY TO MOLEX<br>INCORPORATED AND SHOULD NOT BE USED WITHOUT WRITTEN PERMISSION | MOLEX INCORPORATED   |                                      |   |                     |   |

19 18 17 16 15 14 13 12 11 10 9 8 7 6 5 4 3 2 1