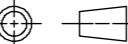
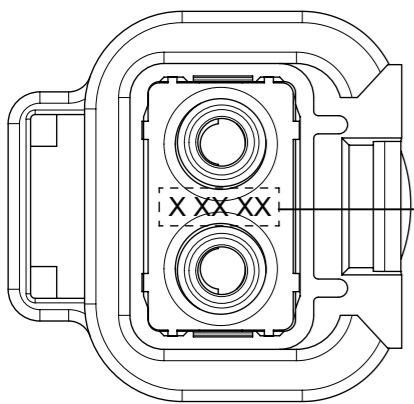
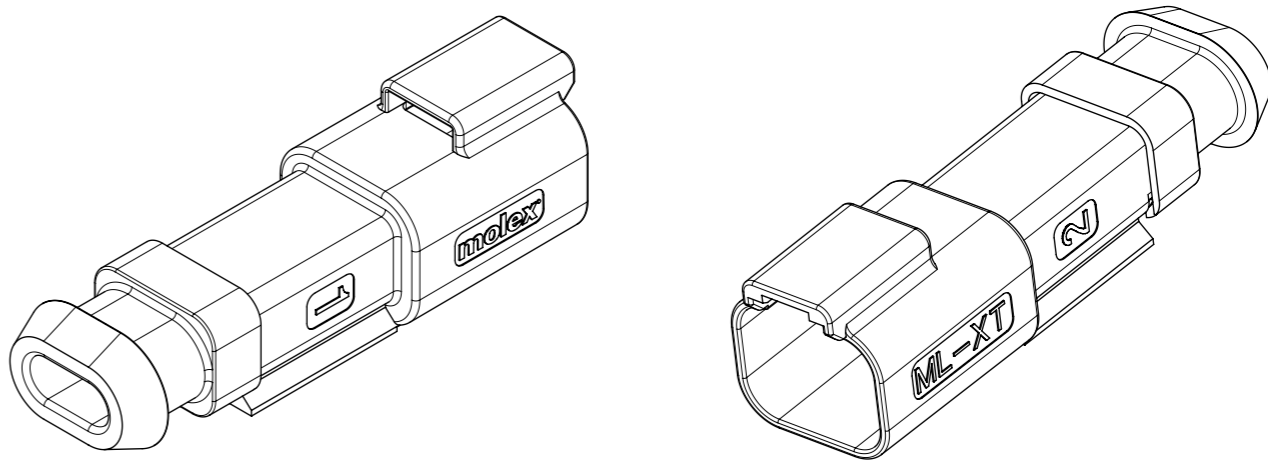
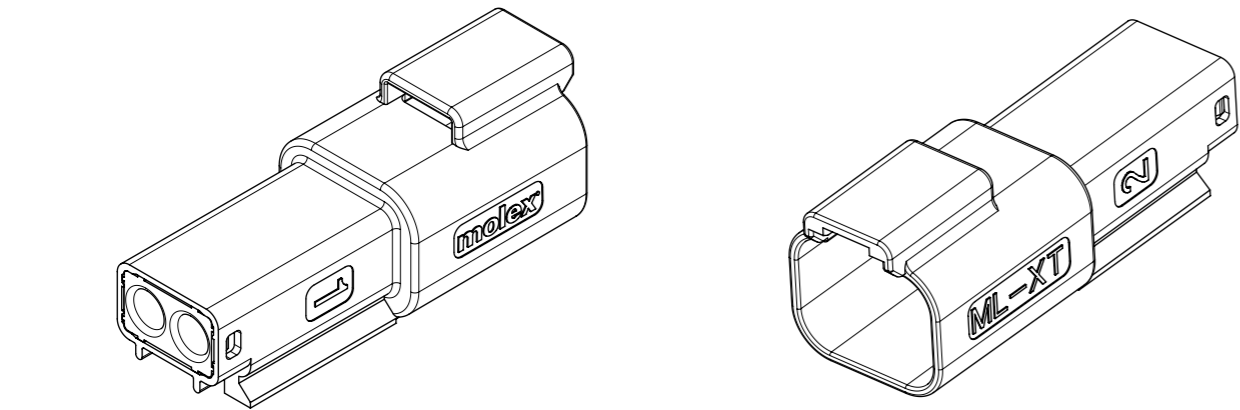


NOTES  
1. SEE SHEETS 2 TO 7 FOR UNSPECIFIED  
NOTES, DIMENSIONS AND PART NUMBERS

THIS DRAWING CONTAINS INFORMATION THAT IS PROPRIETARY TO MOLEX INCORPORATED AND SHOULD NOT BE USED WITHOUT WRITTEN PERMISSION															
SUPERSEDING SD-93443-0010  EC NO: 109451 DRWN: JFLETCHER CHK'D: FDUGGAN APPR: JDWALLACE		2016/10/18 2016/10/18 2016/10/24	QUALITY SYMBOLS	GENERAL TOLERANCES (UNLESS SPECIFIED)	DIMENSION UNITS	SCALE	<div>molex</div>								
					MM	2:1									
					ANGULAR TOL ± 2.0 °					DRWN BY		DATE		2CCT ML-XT CV CONNECTOR	
										KREILLY		2015/06/12			
					4 PLACES ±					CHK'D BY		DATE		PRODUCT CUSTOMER DRAWING	
										FDUGGAN		2015/09/13			
A2	REV	QUALITY SYMBOLS	GENERAL TOLERANCES (UNLESS SPECIFIED)	DRAFT WHERE APPLICABLE MUST REMAIN WITHIN DIMENSIONS	DRAWING SIZE		THIRD ANGLE PROJECTION		SERIES	MATERIAL NUMBER	CUSTOMER				
					A3				93443	SEE NOTES	GENERAL MARKET				
					0 PLACES ±					DOCUMENT NUMBER			DOC TYPE	DOC PART	SHEET NUMBER
										934430010			PSD	000	1 OF 9
					1 PLACE ± 0.2										
2 PLACES ± 0.1															
3 PLACES ±															
4 PLACES ±															

2CCT RECEPTACLE CONNECTOR

2CCT RECEPTACLE CONNECTOR WITH  
HEATSHRINK HOUSING ULTRASONICALLY  
WELDED IN PLACE



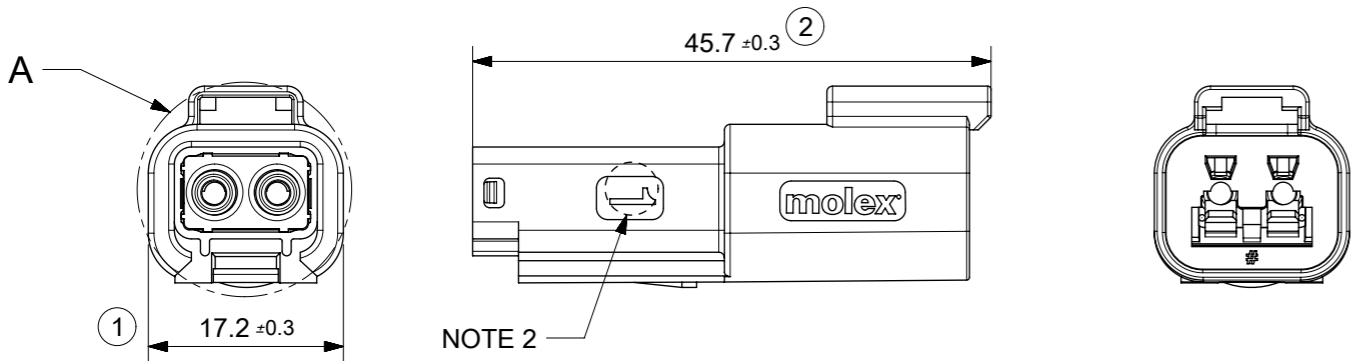
DATE CODE: X XX XX  
X — DAY: 1- 7

X — WEEK: 01 - 52

X — YEAR: 00 - 99

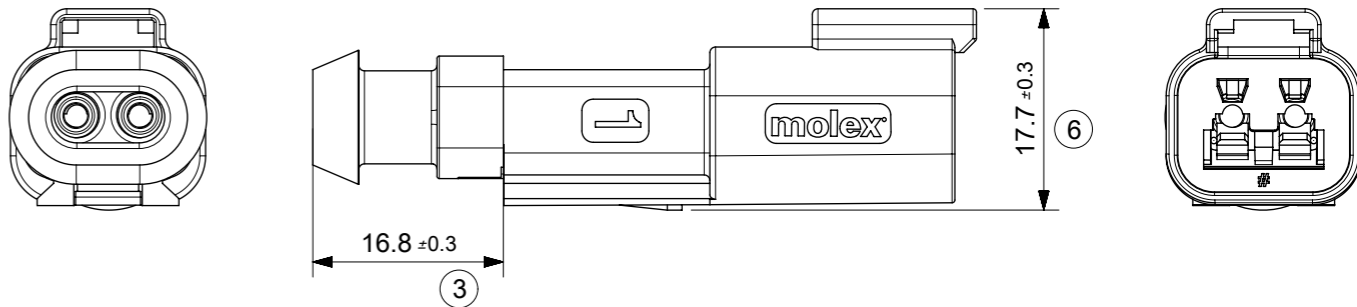
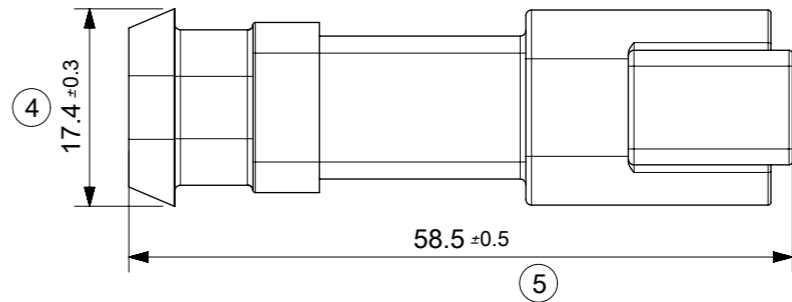
EXAMPLE: 11315 = DAY 1, WEEK 13, YEAR 15  
i.e. 23rd OF MARCH 2015

(ROTATED 90°)  
DETAIL A  
SCALE 3:1



NOTE 2

- NOTES:
- MATERIAL  
HOUSING: NYLON 30%GF  
BACK SEAL: HIGH CONSISTENCY RUBBER
  - CIRCUIT IDENTIFICATION
  - JACKET RANGE LARGE = 2.7mm TO 3.6mm (SEAL COLOUR: LIGHT BLUE)  
JACKET RANGE SMALL = 1.4mm TO 2.7mm (SEAL COLOUR: BURNT ORANGE)
  - SEE SHEET 3 FOR FINAL PART NUMBER DESIGNATION
  - SEE 934430010 PS P FOR PRODUCT SPECIFICATION
  - SEE 934430002 PS K OR 934430010 PS K FOR PACKAGING SPECIFICATION
- LAST INSPECTION NUMBER: 6  
INSPECTION NUMBERS 1-50 RESERVED FOR SHEET 2



THIS DRAWING CONTAINS INFORMATION THAT IS PROPRIETARY TO MOLEX INCORPORATED AND SHOULD NOT BE USED WITHOUT WRITTEN PERMISSION

SUPERSEDING SD-93443-0010 EC NO: 109451 DRWN: JFLETCHER CHKD: FDUGGAN APPR: JDWALLACE		2016/10/18 2016/10/18 2016/10/24	QUALITY SYMBOLS <div><div></div> = 0 <div><div></div> = 0 <div><div></div> = 0 <div><div></div> = 0 <div><div></div> = 0 <div><div></div> = 0 <div><div></div> = 0</div></div></div></div></div></div></div>	GENERAL TOLERANCES (UNLESS SPECIFIED)  ANGULAR TOL ± 2.0 ° <table><tr><td>4 PLACES</td><td>±</td></tr><tr><td>3 PLACES</td><td>±</td></tr><tr><td>2 PLACES</td><td>± 0.1</td></tr><tr><td>1 PLACE</td><td>± 0.2</td></tr><tr><td>0 PLACES</td><td>±</td></tr></table> DRAFT WHERE APPLICABLE MUST REMAIN WITHIN DIMENSIONS		4 PLACES	±	3 PLACES	±	2 PLACES	± 0.1	1 PLACE	± 0.2	0 PLACES	±	DIMENSION UNITS MM		SCALE 1.5:1	<div>molex</div> 2CCT ML-XT CV CONNECTOR			
						4 PLACES	±															
						3 PLACES	±															
						2 PLACES	± 0.1															
						1 PLACE	± 0.2															
						0 PLACES	±															
						DRWN BY KREILLY		DATE 2015/06/12														
CHK'D BY FDUGGAN		DATE 2015/09/13																				
				APPR BY JDWALLACE		DATE 2015/09/15		PRODUCT CUSTOMER DRAWING														
				DRAWING SIZE A3		THIRD ANGLE PROJECTION 																
A2		REV				SERIES 93443		MATERIAL NUMBER SEE SHEET 3		CUSTOMER GENERAL MARKET												
						DOCUMENT NUMBER 934430010		DOC TYPE PSD		DOC PART 000	SHEET NUMBER 2 OF 9											

9

8

7

6

5

4

3

2

1

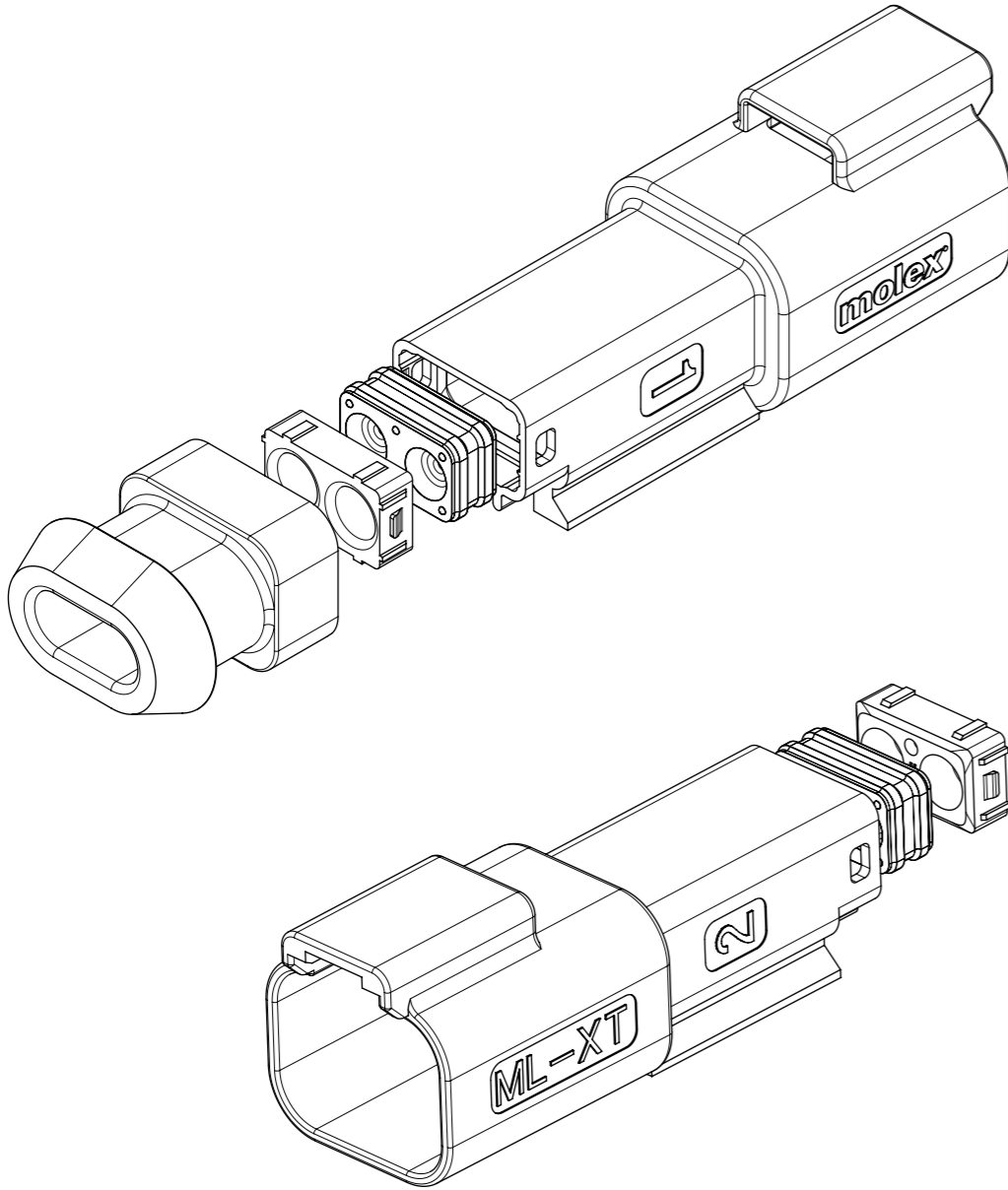
E

D

C

B

A



2CCT RECEPTACLE CONNECTOR

SERIES NO.

93444

1

-

--

CIRCUIT SIZE  
1 = 2CCT

ASSEMBLY OPTIONS

- 1 = RECEP ASSEMBLY FOR WIRE JACKET RANGE Ø1.4mm-2.7mm (NOTE 2)  
2 = RECEP ASSEMBLY FOR WIRE JACKET RANGE: Ø2.7mm-3.6mm (NOTE 2)  
5 = RECEP ASSEMBLY & HEATSHR FOR WIRE JACKET RANGE: Ø1.4mm-2.7mm (NOTE 3)  
6 = RECEP ASSEMBLY & HEATSHR FOR WIRE JACKET RANGE: Ø2.7mm-3.6mm (NOTE 3)










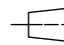
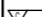
COLOUR

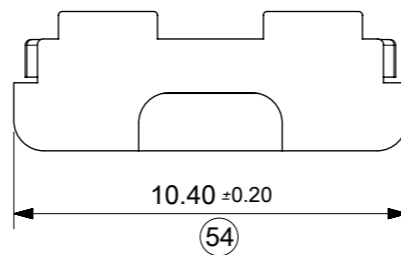
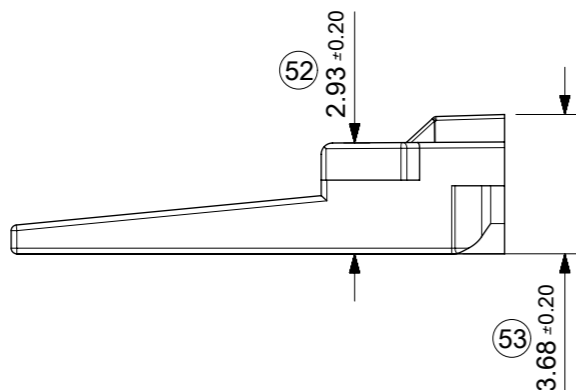
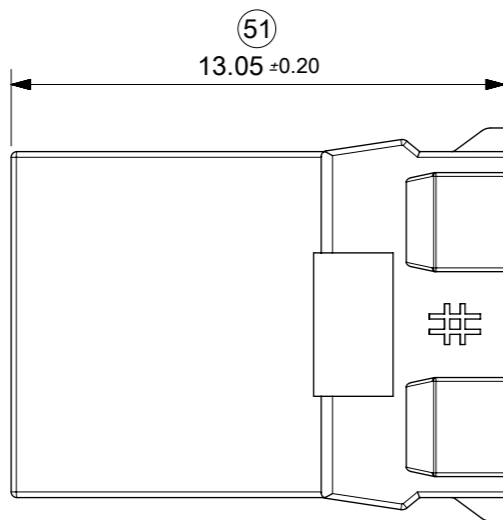
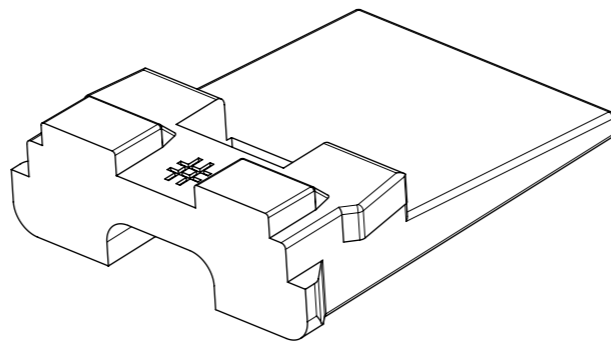
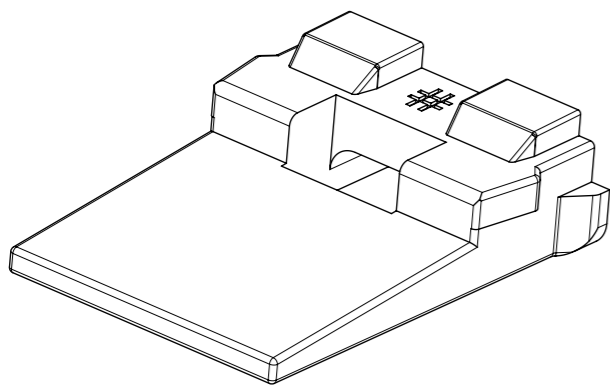
- 01 = BLACK  
02 = GREY  
03 = GREEN  
04 = BLUE  
05 = YELLOW  
06 = WHITE  
07 = BROWN  
08 = ORANGE  
09 = RED

EXAMPLE:

2CCT RECEP BLACK WITH LARGE SEAL (NOTE 4), AND HEATSHRINK = 93444-1601

- Notes:
- SEE SHEET 2 FOR UNSPECIFIED NOTES AND DIMENSIONS
  - BACK COVER HOUSING COLOUR: BLACK
  - HEATSHRINK HOUSING COLOUR: BLACK
  - JACKET RANGE LARGE = 2.7mm TO 3.6mm (SEAL COLOUR: LIGHT BLUE)  
JACKET RANGE SMALL = 1.4mm TO 2.7mm (SEAL COLOUR: BURNT ORANGE)

THIS DRAWING CONTAINS INFORMATION THAT IS PROPRIETARY TO MOLEX INCORPORATED AND SHOULD NOT BE USED WITHOUT WRITTEN PERMISSION																								
SUPERSEDING SD-93443-0010		EC NO: 109451	DRWN: JFLETCHER	2016/10/18	CHK'D: FDUGGAN	2016/10/18	APPR: JDWALLACE	2016/10/24	QUALITY SYMBOLS	GENERAL TOLERANCES (UNLESS SPECIFIED)		DIMENSION UNITS		SCALE		<div>molex</div>								
												MM	2:1											
												= 0	ANGULAR TOL ± 2.0 °		DRWN BY		DATE		2CCT ML-XT CV CONNECTOR					
												= 0			KREILLY		2015/06/12							
												= 0	4 PLACES		±		CHK'D BY		DATE		PRODUCT CUSTOMER DRAWING			
												= 0	3 PLACES		±		FDUGGAN		2015/09/13					
	= 0	2 PLACES		± 0.1		APPR BY		DATE		SERIES				MATERIAL NUMBER		CUSTOMER								
	= 0	1 PLACE		± 0.2		JDWALLACE		2015/09/15																
	= 0	0 PLACES		±		DRAWING SIZE		THIRD ANGLE PROJECTION		93443		SEE CHART		GENERAL MARKET										
	= 0	DRAFT WHERE APPLICABLE MUST REMAIN WITHIN DIMENSIONS		A3						DOCUMENT NUMBER				DOC TYPE	DOC PART	SHEET NUMBER								
	= 0									934430010				PSD	000	3 OF 9								



## 2CCT RECEP. WEDGELOCK

SERIES NO.

93447

CIRCUIT SIZE  
1 = 2CCT

1

0

--

COLOUR/KEYING

03 = GREEN (NO KEY)

12 = GREY A KEY

21 = BLACK B KEY


33 = GREEN C KEY

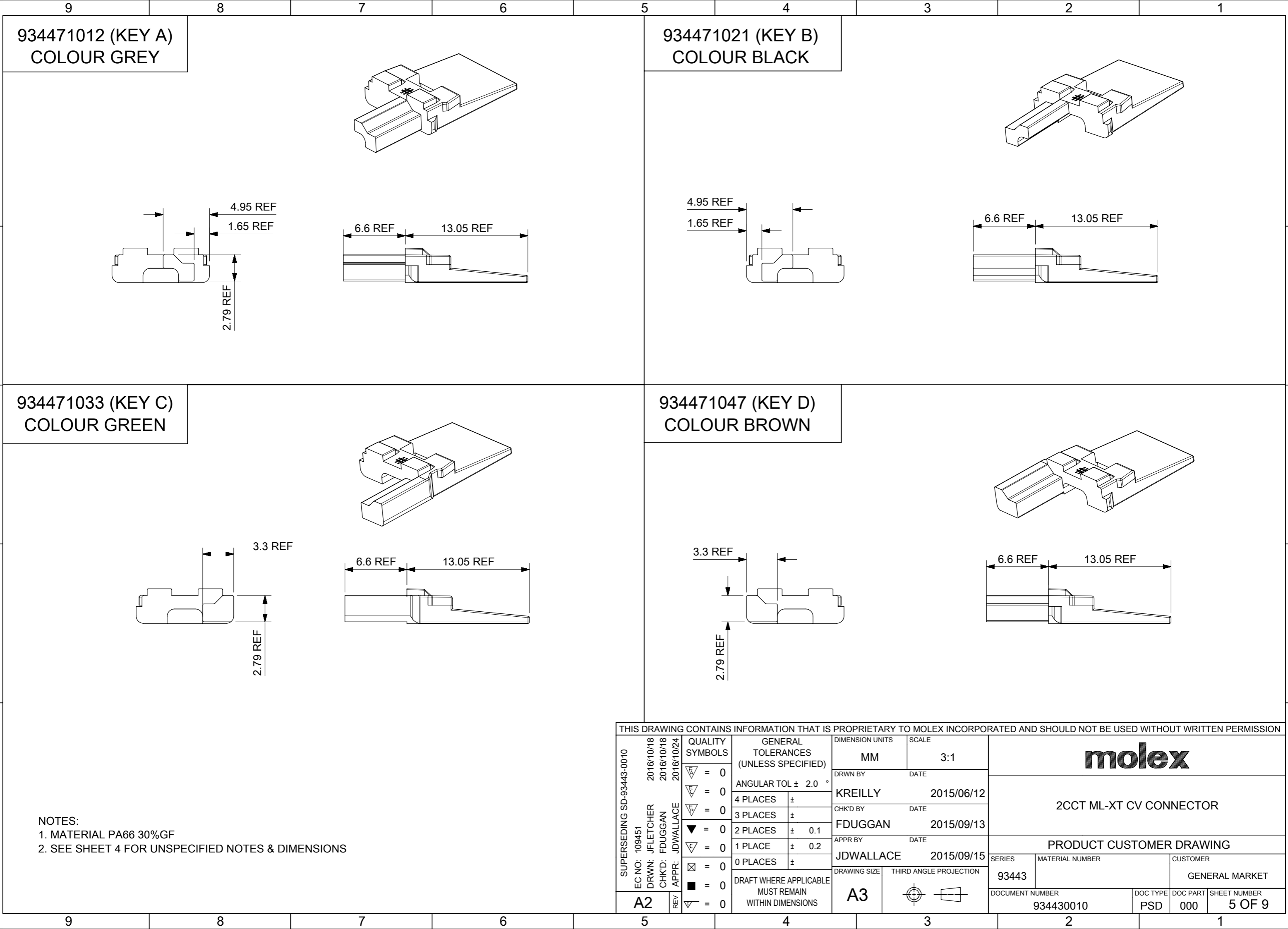
47 = BROWN D KEY

## NOTES

1. MATERIAL  
HOUSING: NYLON 30%GF
2. INSPECTION NUMBERS 51-100  
RESERVED FOR SHEET 4
3. PART NUMBER 934471003 SHOWN  
LAST INSPECTION NUMBER 54

THIS DRAWING CONTAINS INFORMATION THAT IS PROPRIETARY TO MOLEX INCORPORATED AND SHOULD NOT BE USED WITHOUT WRITTEN PERMISSION

SUPERSEDING SD-93443-0010		EC NO: 109451		DRWN: JFLETCHER		CHK'D: FDUGGAN		APPR: JDWALLACE		2016/10/18		2016/10/18		2016/10/24		QUALITY SYMBOLS		GENERAL TOLERANCES (UNLESS SPECIFIED)		DIMENSION UNITS		SCALE		<div>molex</div> <div>2CCT ML-XT CV CONNECTOR</div> <div>PRODUCT CUSTOMER DRAWING</div> <table><tr><td>SERIES</td><td colspan="3">MATERIAL NUMBER</td><td colspan="3">CUSTOMER</td></tr><tr><td>93443</td><td colspan="3">SEE CHART</td><td colspan="3">GENERAL MARKET</td></tr><tr><td colspan="3">DOCUMENT NUMBER</td><td>DOC TYPE</td><td>DOC PART</td><td colspan="2">SHEET NUMBER</td></tr><tr><td colspan="3">934430010</td><td>PSD</td><td>000</td><td colspan="2">4 OF 9</td></tr></table>								SERIES	MATERIAL NUMBER			CUSTOMER			93443	SEE CHART			GENERAL MARKET			DOCUMENT NUMBER			DOC TYPE	DOC PART	SHEET NUMBER		934430010			PSD	000	4 OF 9	
																				SERIES	MATERIAL NUMBER											CUSTOMER																											
																				93443	SEE CHART											GENERAL MARKET																											
																				DOCUMENT NUMBER			DOC TYPE									DOC PART	SHEET NUMBER																										
																				934430010			PSD									000	4 OF 9																										
MM		5:1																																																									
DRWN BY		DATE																																																									
KREILLY		2015/06/12																																																									
CHK'D BY		DATE																																																									
FDUGGAN		2015/09/13																																																									
APPR BY		DATE																																																									
JDWALLACE		2015/09/15																																																									
DRAWING SIZE		THIRD ANGLE PROJECTION																																																									
A3																																																											



934471012 (KEY A)  
COLOUR GREY

934471021 (KEY B)  
COLOUR BLACK

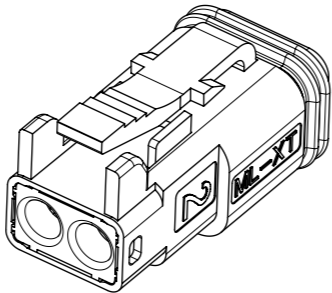
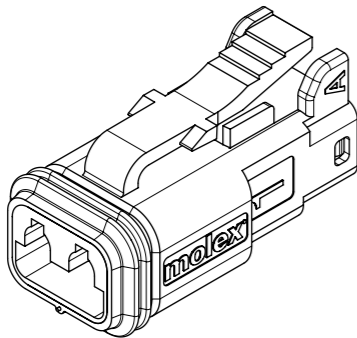
934471033 (KEY C)  
COLOUR GREEN

934471047 (KEY D)  
COLOUR BROWN

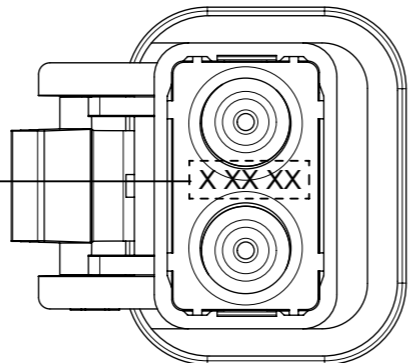
NOTES:  
1. MATERIAL PA66 30%GF  
2. SEE SHEET 4 FOR UNSPECIFIED NOTES & DIMENSIONS

THIS DRAWING CONTAINS INFORMATION THAT IS PROPRIETARY TO MOLEX INCORPORATED AND SHOULD NOT BE USED WITHOUT WRITTEN PERMISSION																					
SUPERSEDING SD-93443-0010 EC NO: 109451 DRWN: JFLETCHER CHK'D: FDUGGAN APPR: JDWALLACE		2016/10/18 2016/10/18 2016/10/24	QUALITY SYMBOLS	GENERAL TOLERANCES (UNLESS SPECIFIED)		DIMENSION UNITS		SCALE		<div>molex</div>											
						MM		3:1													
						DRWN BY				DATE				2CCT ML-XT CV CONNECTOR							
						KREILLY				2015/06/12											
						CHK'D BY				DATE				PRODUCT CUSTOMER DRAWING							
						FDUGGAN				2015/09/13											
						APPR BY				DATE				SERIES				MATERIAL NUMBER		CUSTOMER	
						JDWALLACE				2015/09/15											
A2		REV	QUALITY SYMBOLS	GENERAL TOLERANCES (UNLESS SPECIFIED)		DRAFT WHERE APPLICABLE MUST REMAIN WITHIN DIMENSIONS		DRAWING SIZE		THIRD ANGLE PROJECTION		93443									
												DOCUMENT NUMBER				DOC TYPE		DOC PART		SHEET NUMBER	
												934430010				PSD		000		5 OF 9	

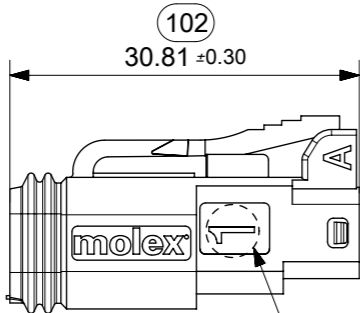
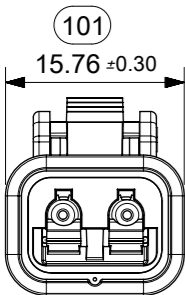
2CCT PLUG CONNECTOR



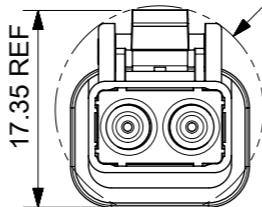
DATE CODE: X XX XX  
X — DAY: 1 - 7  
  
X — WEEK: 01 - 52  
X — YEAR: 00 - 99  
  
EXAMPLE: 11315 = DAY 1, WEEK 13, YEAR 15  
i.e. 23RD OF MARCH 2015



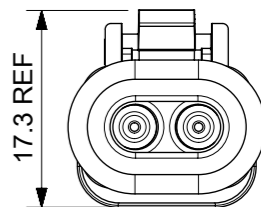
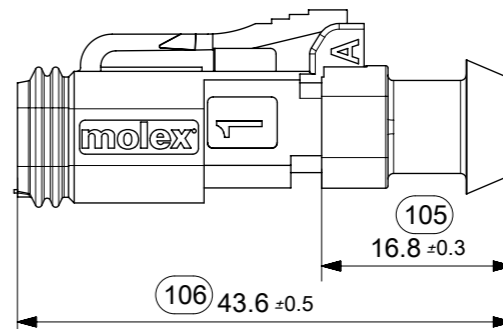
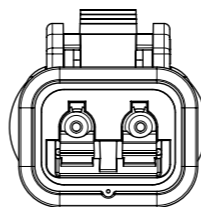
(ROTATED 90°)  
DETAIL B  
SCALE 3:1



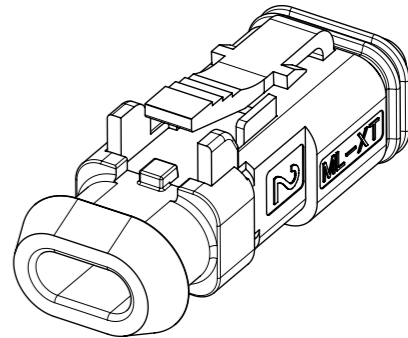
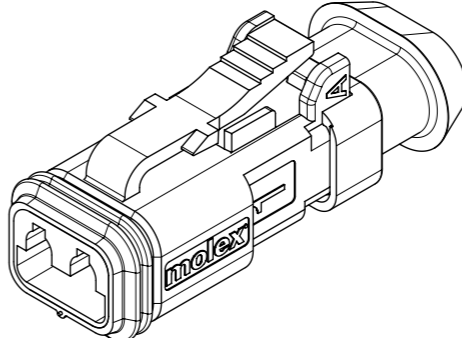
NOTE 2



B

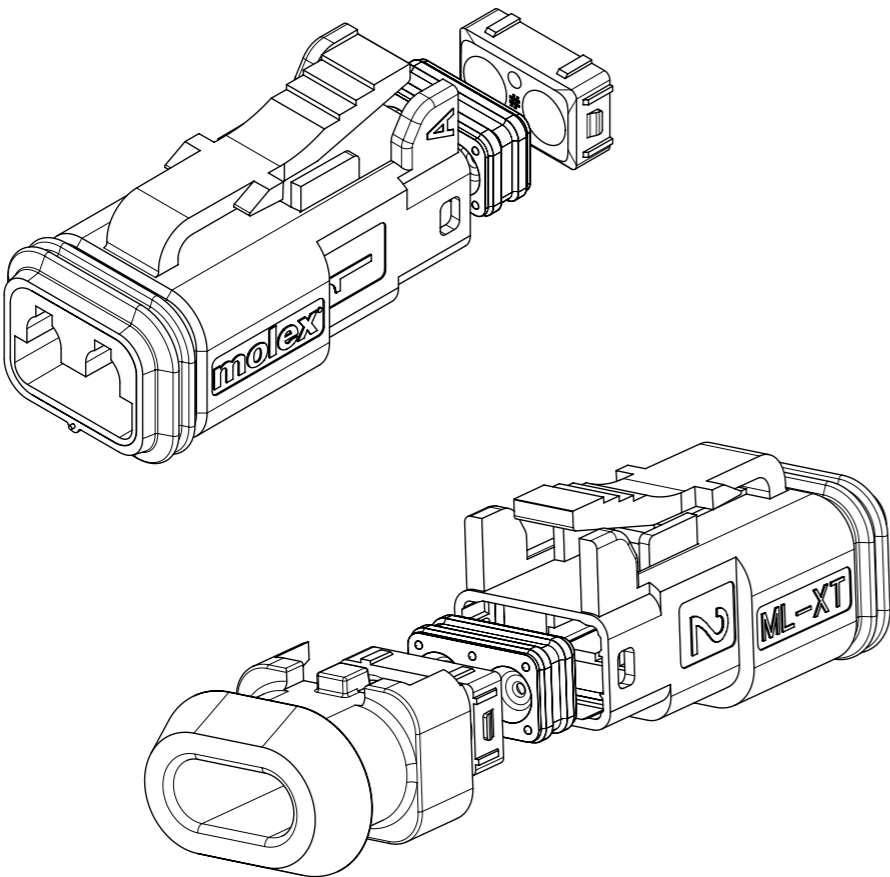


2CCT PLUG CONNECTOR WITH  
HEATSHRINK HOUSING ULTRA  
SONICALLY WELDED IN PLACE



NOTES  
1. MATERIAL  
HOUSING: NYLON 30%GF  
PLUG SEAL: SILICONE RUBBER  
BACK SEAL: HIGH CONSISTENCY RUBBER  
2. CIRCUIT IDENTIFICATION  
3. JACKET RANGE LARGE = 2.7mm TO 3.6mm (SEAL COLOUR: LIGHT BLUE)  
JACKET RANGE SMALL = 1.4mm TO 2.7mm (SEAL COLOUR: BURNT ORANGE)  
4. SEE SHEET 7 FOR FINAL PART NUMBER DESIGNATION  
5. INSPECTION NUMBERS 101-150 RESERVED FOR SHEET 6  
LAST INSPECTION NUMBER 106.  
INSPECTION NUMBERS 103 & 107 DELETED.

THIS DRAWING CONTAINS INFORMATION THAT IS PROPRIETARY TO MOLEX INCORPORATED AND SHOULD NOT BE USED WITHOUT WRITTEN PERMISSION															
SUPERSEDING SD-93443-0010 EC NO: 109451 DRWN: JFLETCHER CHK'D: FDUGGAN APPR: JDWALLACE		2016/10/18 2016/10/18 2016/10/24	QUALITY SYMBOLS	GENERAL TOLERANCES (UNLESS SPECIFIED)		DIMENSION UNITS		SCALE		<div>molex</div>					
						MM		1.5:1							
						DRWN BY		DATE							
						KREILLY		2015/06/12							
						CHK'D BY		DATE							
A2		REV	QUALITY SYMBOLS	GENERAL TOLERANCES (UNLESS SPECIFIED)		FDUGGAN		2015/09/13		2CCT ML-XT CV CONNECTOR					
						APPR BY		DATE							
						JDWALLACE		2015/09/15							
						DRAFT WHERE APPLICABLE MUST REMAIN WITHIN DIMENSIONS		DRAWING SIZE		PRODUCT CUSTOMER DRAWING					
								A3						THIRD ANGLE PROJECTION	
						SERIES		MATERIAL NUMBER		CUSTOMER					
						93443		SEE SHEET 7		GENERAL MARKET					
						DOCUMENT NUMBER				DOC TYPE		DOC PART		SHEET NUMBER	
						934430010				PSD		000		6 OF 9	



2CCT PLUG CONNECTOR

SERIES NO. 93445 1 - --

CIRCUIT SIZE  
1 = 2CCT

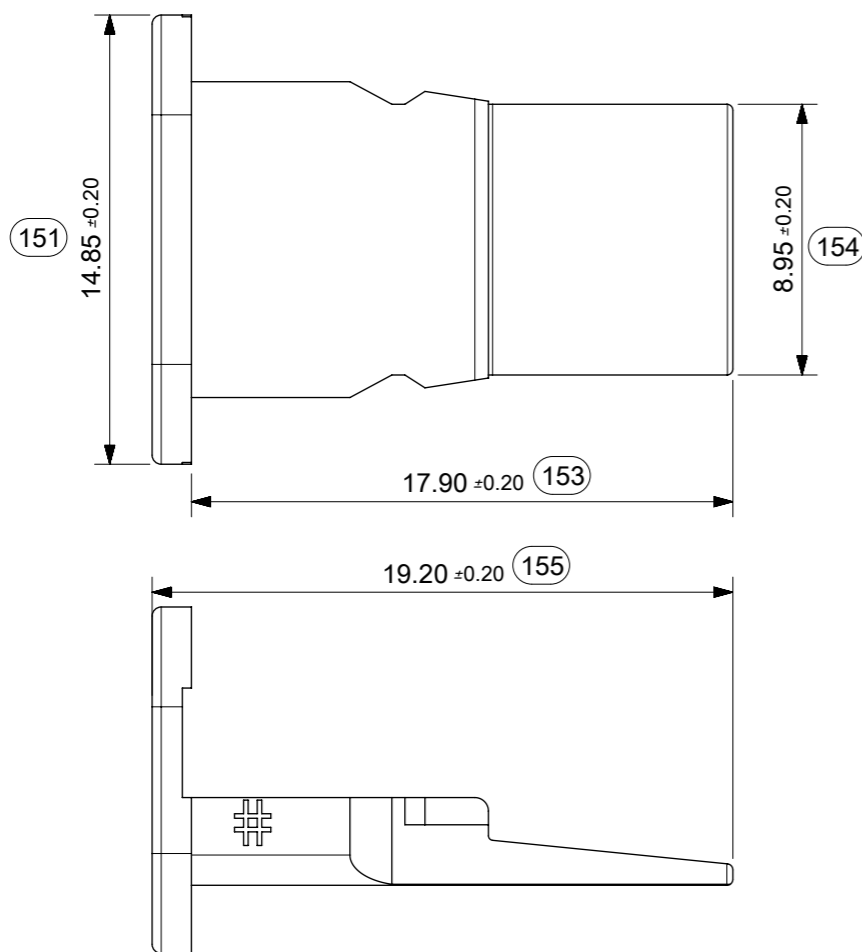
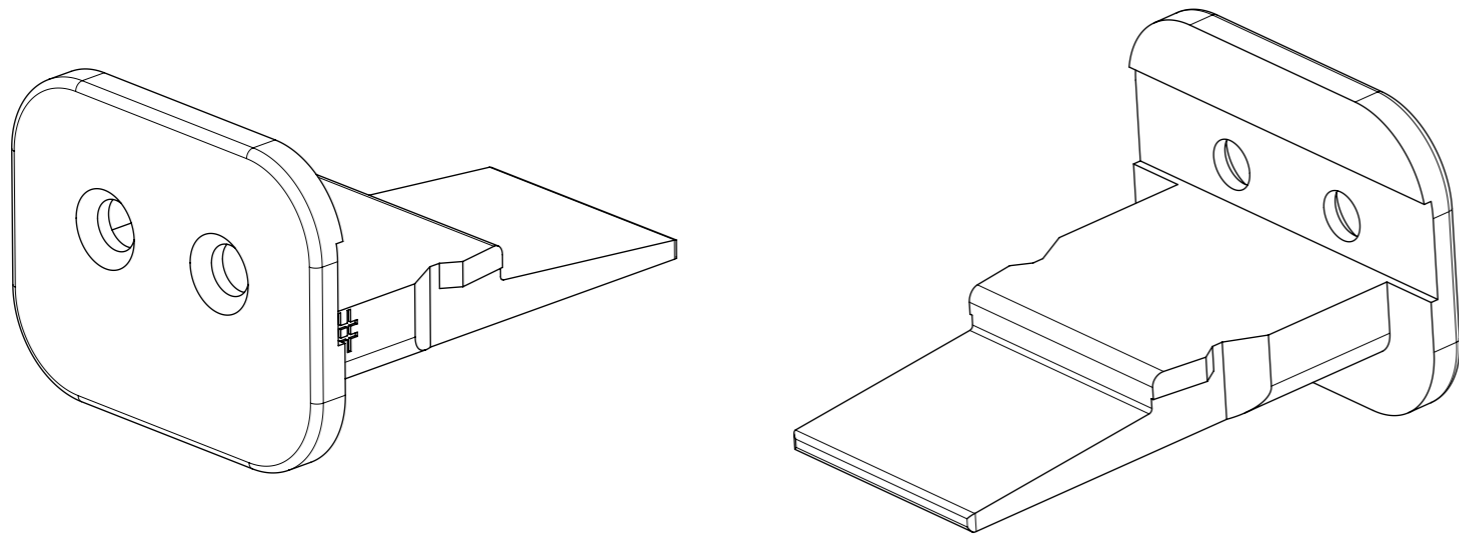
- KEYING/ASSY OPTIONS
- 1 = PLUG ASSEMBLY FOR WIRE JACKET RANGE Ø1.4mm-2.7mm (NOTE 2)
  - 2 = PLUG ASSEMBLY FOR WIRE JACKET RANGE: Ø2.7mm-3.6mm (NOTE 2)
  - 5 = PLUG ASSEMBLY & HEATSHR FOR WIRE JACKET RANGE: Ø1.4mm-2.7mm (NOTE 3)
  - 6 = PLUG ASSEMBLY & HEATSHR FOR WIRE JACKET RANGE: Ø2.7mm-3.6mm (NOTE 3)

- COLOUR
- |            |             |
|------------|-------------|
| 01 = BLACK | 06 = WHITE  |
| 02 = GREY  | 07=BROWN    |
| 03 = GREEN | 08 = ORANGE |
| 04 = BLUE  | 09 = RED    |

EXAMPLE:  
2CCT PLUG BLACK WITH LARGE SEAL (NOTE 4), AND HEATSHRINK = 93445-1601

- Notes:
- 1. SEE SHEET 2 FOR UNSPECIFIED NOTES AND DIMENSIONS
  - 2. BACK COVER HOUSING COLOUR: BLACK
  - 3. HEATSHRINK HOUSING COLOUR: BLACK
  - 4. JACKET RANGE LARGE = 2.7mm TO 3.6mm (SEAL COLOUR: LIGHT BLUE)  
JACKET RANGE SMALL = 1.4mm TO 2.7mm (SEAL COLOUR: BURNT ORANGE)

THIS DRAWING CONTAINS INFORMATION THAT IS PROPRIETARY TO MOLEX INCORPORATED AND SHOULD NOT BE USED WITHOUT WRITTEN PERMISSION																					
SUPERSEDING SD-93443-0010  EC NO: 109451 DRWN: JFLETCHER CHK'D: FDUGGAN APPR: JDWALLACE		2016/10/18 2016/10/18 2016/10/24	QUALITY SYMBOLS	GENERAL TOLERANCES (UNLESS SPECIFIED)		DIMENSION UNITS		SCALE		<div>molex</div>											
						MM		2:1													
				ANGULAR TOL ± 2.0 °				DRWN BY		DATE		2CCT ML-XT CV CONNECTOR									
								KREILLY		2015/06/12											
				4 PLACES ±				CHK'D BY		DATE		PRODUCT CUSTOMER DRAWING									
								FDUGGAN		2015/09/13											
A2		REV	QUALITY SYMBOLS	GENERAL TOLERANCES (UNLESS SPECIFIED)		APPR BY		DATE		SERIES						MATERIAL NUMBER		CUSTOMER			
						JDWALLACE		2015/09/15													
				DRAFT WHERE APPLICABLE MUST REMAIN WITHIN DIMENSIONS				DRAWING SIZE		THIRD ANGLE PROJECTION				93443		SEE CHART		GENERAL MARKET			
								A3													
				0 PLACES ±				0 PLACES ±				934430010				PSD		000		7 OF 9	



2CCT PLUG WEDGELOCK

SERIES NO.

93448

CIRCUIT SIZE  
1 = 2CCT

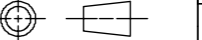
1

0

--

COLOUR/KEYING  
03 = GREEN (NO KEY)  
12 = GREY A KEY  
21 = BLACK B KEY  
33 = GREEN C KEY  
47 = BROWN D KEY

NOTES  
1. MATERIAL  
HOUSING: NYLON 30%GF  
2. INSPECTION NUMBERS 151-200 RESERVED FOR SHEET 8  
3. PART NUMBER 934481003 SHOWN  
LAST INSPECTION NUMBER 155

THIS DRAWING CONTAINS INFORMATION THAT IS PROPRIETARY TO MOLEX INCORPORATED AND SHOULD NOT BE USED WITHOUT WRITTEN PERMISSION																		
SUPERSEDING SD-93443-0010  EC NO: 109451 DRWN: JFLETCHER CHK'D: FDUGGAN APPR: JDWALLACE  A2			2016/10/18 2016/10/18 2016/10/24	QUALITY SYMBOLS  ▽ = 0 ▽ = 0 ▽ = 0 ▼ = 0 ▽ = 0 ☒ = 0 ■ = 0 ▽ = 0	GENERAL TOLERANCES (UNLESS SPECIFIED)  ANGULAR TOL ± 2.0 °  4 PLACES ± 3 PLACES ± 2 PLACES ± 0.1 1 PLACE ± 0.2 0 PLACES ±  DRAFT WHERE APPLICABLE MUST REMAIN WITHIN DIMENSIONS	DIMENSION UNITS	SCALE	<div>molex</div>										
						MM	4:1											
						DRWN BY		DATE		2CCT ML-XT CV CONNECTOR								
						KREILLY		2015/06/12										
						CHK'D BY		DATE		PRODUCT CUSTOMER DRAWING								
						FDUGGAN		2015/09/13										
						APPR BY		DATE		SERIES					MATERIAL NUMBER		CUSTOMER	
						JDWALLACE		2015/09/15										
						DRAWING SIZE		THIRD ANGLE PROJECTION		93443		SEE CHART		GENERAL MARKET				
A3				DOCUMENT NUMBER			DOC TYPE		DOC PART		SHEET NUMBER							
				934430010			PSD		000		8 OF 9							

