

DO NOT SCALE FROM THIS PRINT

- NOTES:
1. MIN CONTACT PUSHOUT: 1.5 LBS
 2. FOR A 1 POSITION SINGLE ROW ALL SPACERS ARE TO BE TSW-XX-S
 3. SPACERS SHALL BE ASSEMBLED AS SHOWN WITH SNAP GROOVES AWAY FROM SSW BODY.
 4. MAX ALLOWABLE BOW .003 INCH/INCH AFTER ASSMBLY
 5. DO NOT USE DSB SPACER BODY FOR THIS OPTION.
 6. MAX CUT FLASH : .010

CONTACT STYLE
 SQUARE TAIL: USE C-15-X-X
 LOW INSERTION FORCE: C-60-X-X
 (SEE TABLE 1, SHT 2)

NO. OF POSITIONS
 POSITIONS 01 THRU 36
 (SEE FIG 1)
 FOR A ONE POSITION
 SINGLE ROW SEE NOTE 2

LEAD STYLE
 (SEE TABLE 1, SHT 2)

PLATING SPECIFICATION
 -G: 20µ" GOLD IN CONTACT AREA, 3µ" GOLD TAIL
 -T: MATTE TIN CONTACT AND TAIL
 -S: 30µ" SELECTIVE GOLD IN CONTACT AREA, MATTE TIN TAIL
 -H: 30µ" HEAVY GOLD IN CONTACT AREA, 3µ" GOLD TAIL
 -L: 10µ" SELECTIVE LIGHT GOLD IN CONTACT AREA, MATTE TIN TAIL

ESQ-1XX-XX-X-X-XXX-XX-X-XX

*SEE NOTE 6

METAL WASHER OPTION
 #* -H-MW: (SEE FIG 3, SHT 2)
 (N/A ON TRIPLE ROW)
 .300 [7.62] MAX TAIL
 (AVAILABLE ON POS
 -02 THRU -32 ONLY)

LOCKING LEAD OPTION
 -LL (SEE FIG 2, SHT 2)
 [N/A ON 1 OR 2 POSITION
 SINGLE ROW]

POLARIZATION OPTION
 INDICATES POSITION (SEE FIG 4, SHT 2)

ROW SPECIFICATION (SEE TABLE 1, SHT 2)
 -S: SINGLE (USE SSW-50-S)
 -D: DOUBLE (USE SSW-50-D)
 -T: TRIPLE (USE SSW-50-T)

#-MW OPTION, DO NOT DESIGN IN. SAMTEC WILL ONLY SUPPORT EXISTING BUSINESS 2/12/02

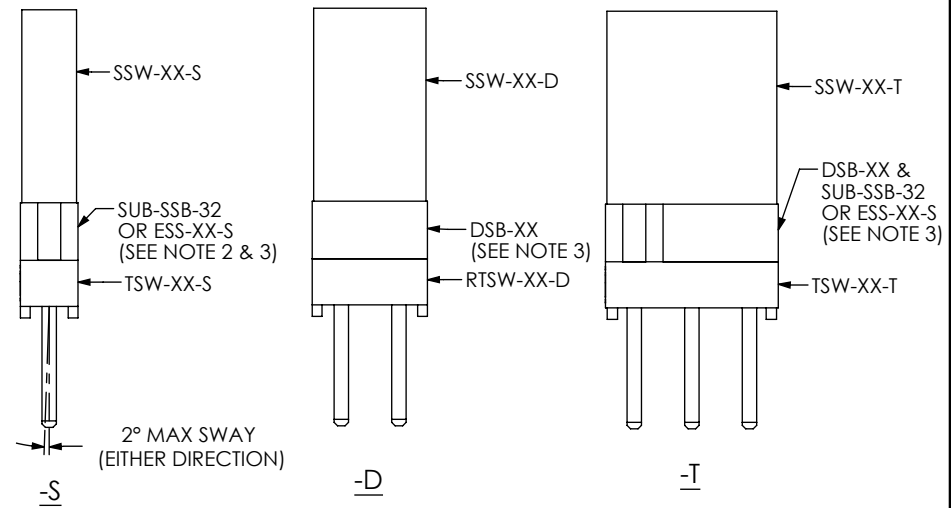
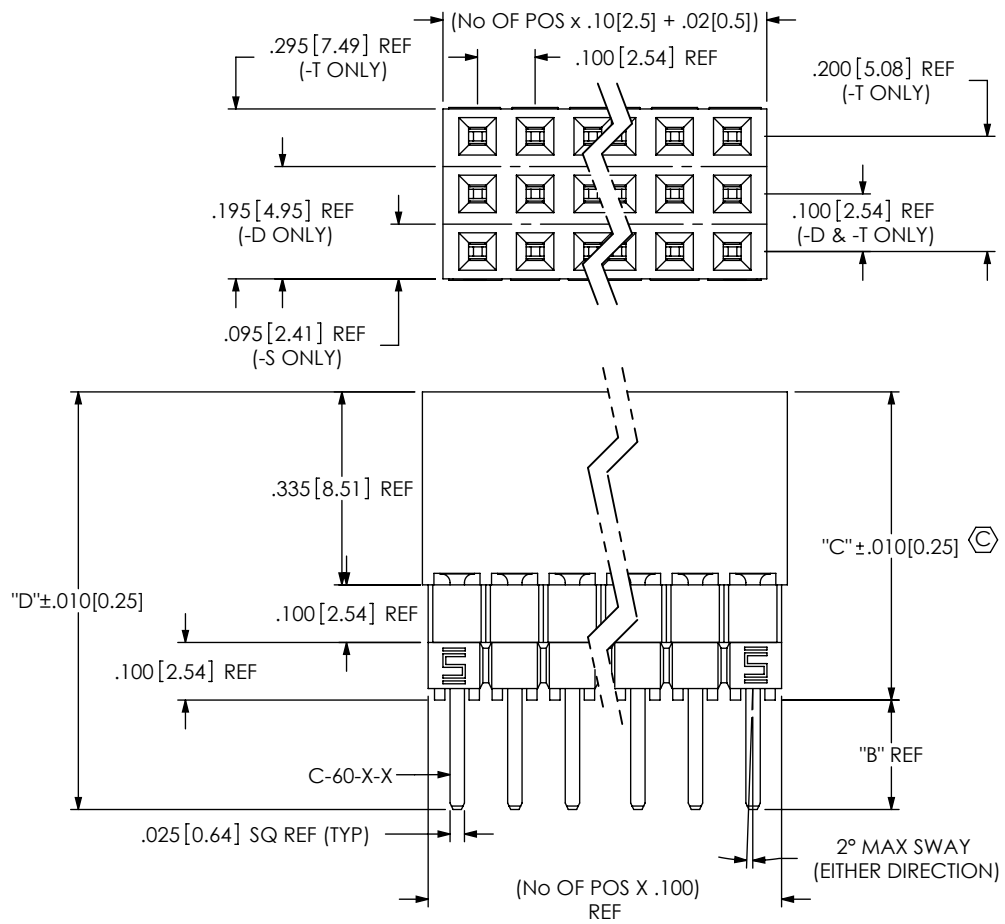


FIG 1
 ESQ-110-XX-X-T

UNLESS OTHERWISE SPECIFIED,
 DIMENSIONS ARE IN INCHES.
 TOLERANCES ARE:
 DECIMALS ANGLES
 .XX: ±.01 [0.3] 2°
 .XXX: ±.005 [0.13]
 .XXXX: ±.0020 [0.051]

PROPRIETARY NOTE
 THIS DOCUMENT CONTAINS INFORMATION
 CONFIDENTIAL AND PROPRIETARY TO
 SAMTEC, INC. AND SHALL NOT BE REPRODUCED
 OR TRANSFERRED TO OTHER DOCUMENTS OR
 DISCLOSED TO OTHERS OR USED FOR ANY
 PURPOSE OTHER THAN THAT WHICH IT WAS
 OBTAINED WITHOUT THE EXPRESSED WRITTEN
 CONSENT OF SAMTEC, INC.

samtec
 520 PARK EAST BLVD, NEW ALBANY, IN 47150
 PHONE: 812-944-6733 FAX: 812-948-5047
 e-Mail info@SAMTEC.com code 53322

MATERIAL: DO NOT SCALE DRAWING SHEET SCALE: 3:1
 INSULATOR: LCP, UL 94 V0
 COLOR: BLACK
 CONTACT : PHOS BRONZE

DESCRIPTION: ESQ STRIP ASM
 DWG. NO. ESQ-1XX-XX-X-X-XXX-XX-X-XX

BY: JORDAN 7-16-85 SHEET 1 OF 4

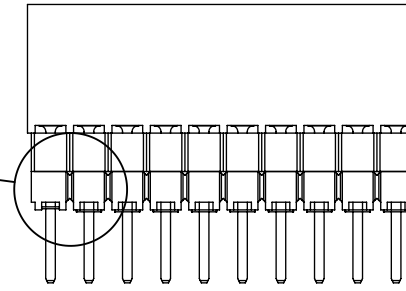
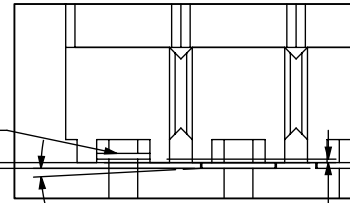
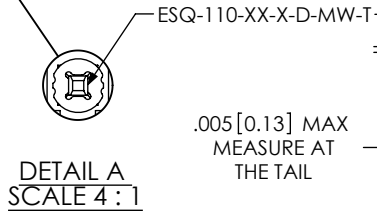
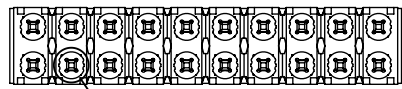


FIG 3

#-H-MW: METAL WASHER
ESQ-110-XX-X-X-MWT
(ONE PER POSITION)
(-S & -D BODY SPECS ONLY)
(SEE NOTE 5)

(SAME AS FIG 1 UNLESS OTHERWISE NOTED)

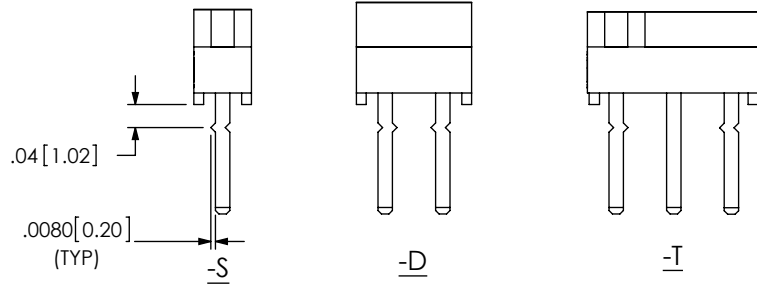
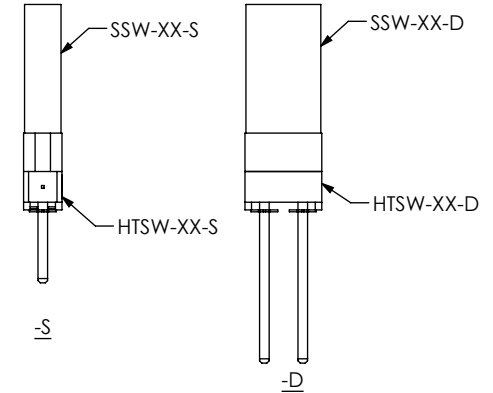


FIG 2

-LL: LOCKING LEAD OPTION
LOCATED ON OR ABOUT CENTERLINE
[N/A IN 1 OR 2 POSITION SINGLE ROW]

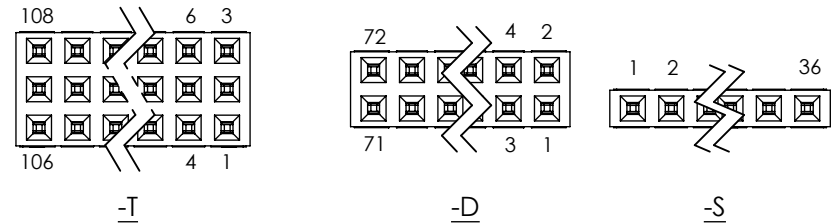


FIG 4

XXX: POLARIZATION LOCATION
INSERT PK-06-N INTO SPECIFIED POS
AND BREAK OFF TAB

F:\DWG\MISC\MKTG\ESQ-1XX-XX-X-XXX-XX-X-MKT.SLDDRW

STANDARD INSERTION FORCE	CONTACT	SPACER SPECIFICATION (FOR A ONE POSITION SINGLE SEE NOTE 3)			"B"	"C"	"D"	"E"
		ESQ-S	ESQ-D	ESQ-T				
		-12	C-15-2-X	N/A				
-13	C-15-3-X	N/A	N/A	N/A	.29[7.37]	.435[11.05]	.725[18.41]	N/A
-14	C-15-4-X	N/A	N/A	N/A	.48[12.2]	.435[11.05]	.915[23.24]	N/A
-23	C-15-3-X	(1) SUB-SSB-32	(1) DSB-XX	(1) SUB-SSB-32 (1) DSB-XX	.19[4.83]	.535[13.59]	.725[18.41]	N/A
-24	C-15-4-X	(1) SUB-SSB-32	(1) DSB-XX	(1) SUB-SSB-32 (1) DSB-XX	.38[9.65]	.535[13.59]	.915[23.24]	N/A
-33	C-15-3-X	(2) SUB-SSB-32	(2) DSB-XX	(2) SUB-SSB-32 (2) DSB-XX	.09[2.87]	.635[16.13]	.725[18.41]	N/A
-34	C-15-4-X	(2) SUB-SSB-32	(2) DSB-XX	(2) SUB-SSB-32 (2) DSB-XX	.28[7.11]	.635[16.13]	.915[23.24]	N/A
-44	C-15-4-X	(1) ESS-XX-S	(3) DSB-XX	(1) ESS-XX-S (3) DSB-XX	.18[4.57]	.735[18.67]	.915[23.24]	N/A
LOW INSERTION FORCE	CONTACT	SPACER SPECIFICATION (FOR A ONE POSITION SINGLE SEE NOTE 3)			"B"	"C"	"D"	"E"
		ESQ-S	ESQ-D	ESQ-T				
		-37	C-60-2-X	N/A				
-38	C-60-3-X	N/A	N/A	N/A	.29[7.37]	.435[11.05]	.725[18.41]	N/A
-39	C-60-4-X	N/A	N/A	N/A	.48[12.2]	.435[11.05]	.915[23.24]	N/A
-48	C-60-3-X	SUB-SSB-32	(1) DSB-XX	(1) SUB-SSB-32 (1) DSB-XX	.19[4.83]	.535[13.59]	.725[18.41]	N/A
-49	C-60-4-X	(1) SUB-SSB-32	(1) DSB-XX	(1) SUB-SSB-32 (1) DSB-XX	.38[9.65]	.535[13.59]	.915[23.24]	N/A
-58	C-60-3-X	(2) SUB-SSB-32	(2) DSB-XX	(2) SUB-SSB-32 (2) DSB-XX	.09[2.87]	.635[16.13]	.725[18.41]	N/A
-59	C-60-4-X	(2) SUB-SSB-32	(2) DSB-XX	(2) SUB-SSB-32 (2) DSB-XX	.28[7.11]	.635[16.13]	.915[23.24]	N/A
-69	C-60-4-X	(1) ESS-XX-S	(3) DSB-XX	(1) ESS-XX-S (3) DSB-XX	.18[4.57]	.735[18.67]	.915[23.24]	N/A

PROPRIETARY NOTE
THIS DOCUMENT CONTAINS INFORMATION
CONFIDENTIAL AND PROPRIETARY TO
SAMTEC, INC. AND SHALL NOT BE REPRODUCED
OR TRANSFERRED TO OTHER DOCUMENTS OR
DISCLOSED TO OTHERS OR USED FOR ANY
PURPOSE OTHER THAN THAT WHICH IT WAS
OBTAINED WITHOUT THE EXPRESSED WRITTEN
CONSENT OF SAMTEC, INC.

DO NOT SCALE DRAWING

SHEET SCALE: 1:1

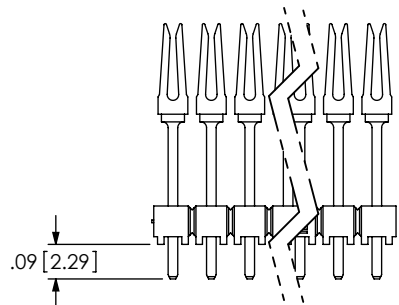
520 PARK EAST BLVD, NEW ALBANY, IN 47150
PHONE: 812-944-6733 FAX: 812-948-5047
e-Mail: info@SAMTEC.com code 55322

DESCRIPTION: ESQ STRIP ASM

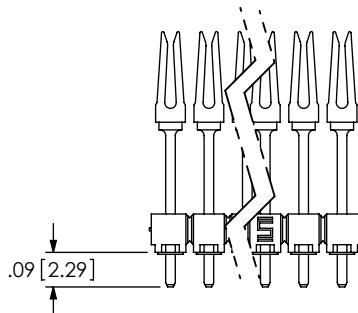
DWG. NO. ESQ-1XX-XX-X-X-XXX-XX-X-XX

BY: WHITTAKER 9-11-98 SHEET 2 OF 4

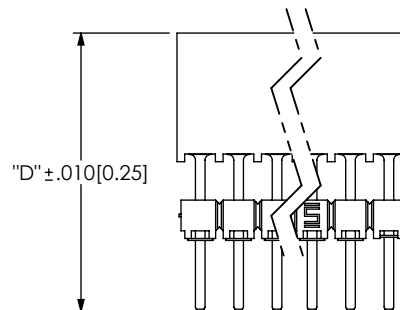
LOAD CONTACT



PRESS ON -MW

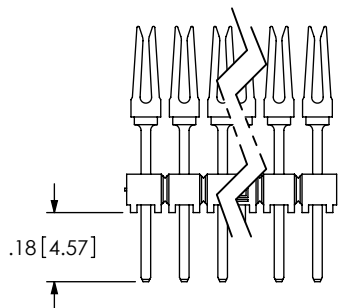


PRESS ON SSW BODY

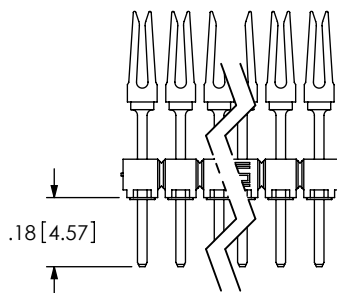


IN PROCESS
-12, -33, -37, -58

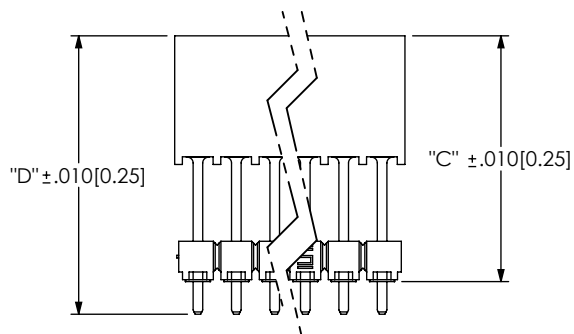
LOAD CONTACT



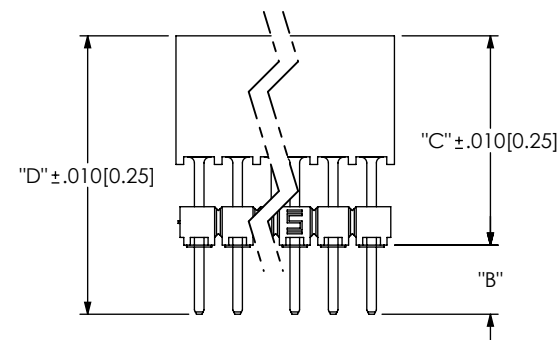
PRESS ON -MW



PRESS ON SSW BODY



REPRESS STACKER BODY AND -MW TO PROPER "C" DIM



IN PROCESS
-13, -14, -23, -24, -34, -38
-39, -44, -48, -49, -59, -69

PROPRIETARY NOTE

THIS DOCUMENT CONTAINS INFORMATION CONFIDENTIAL AND PROPRIETARY TO SAMTEC, INC. AND SHALL NOT BE REPRODUCED OR TRANSFERRED TO OTHER DOCUMENTS OR DISCLOSED TO OTHERS OR USED FOR ANY PURPOSE OTHER THAN THAT WHICH IT WAS OBTAINED WITHOUT THE EXPRESSED WRITTEN CONSENT OF SAMTEC, INC.

DO NOT SCALE DRAWING

SHEET SCALE: 1:1

samtec

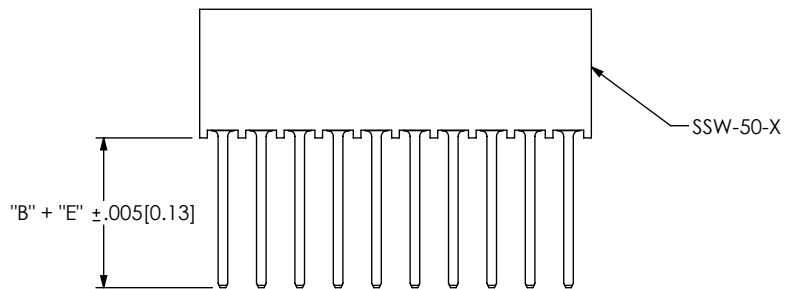
520 PARK EAST BLVD, NEW ALBANY, IN 47150
PHONE: 812-944-6733 FAX: 812-948-5047
e-Mail info@SAMTEC.com code 55322

DESCRIPTION: ESQ STRIP ASM

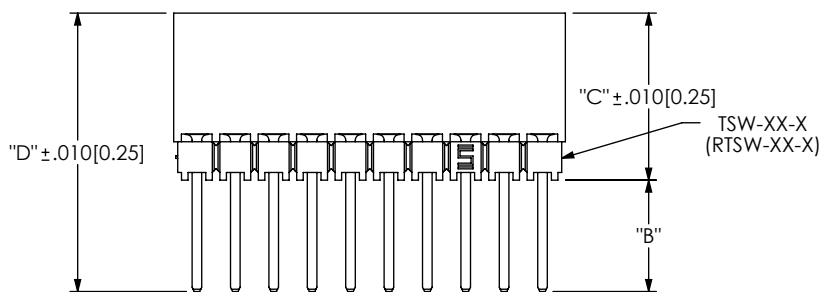
DWG. NO. ESQ-1XX-XX-X-X-XXX-XX-X-XX

BY: WITHTAKER 9-11-98

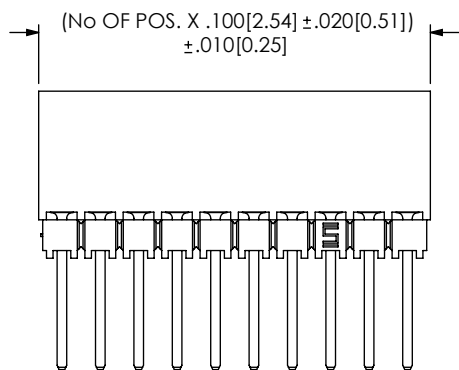
SHEET 3 OF 4



STEP 1
MACHINE FILL SSW-50-X



STEP 2
MULTI-CUT TSW-50-X TO POS (RTSW-50-D FOR DOUBLE ROW)
AND MOUNT AS SHOWN.
(IF RTSW-50-D NOT AVAILABLE, TSW-50-D MAY BE USED)



STEP 3
ROTO CUT TO POS

FIG 5
ESQ-TT0-XX-X-S
IN PROCESS "B"
(LEAD STYLE -12 & -37)
(-S & -D ONLY)

TABLE 2			
LEAD STYLE	ROW	TUBE	PLUG (2)
-12, -37	-S	PT-1-24-01-46	TP-24
-13, -14, -23, -24, -33, -34, -44, -38, -39, -48, -49, -58, -59, -69		PT-1-24-01-47	TP-24
-12, -37	-D	PT-1-24-03-44	TP-07
-14, -24, -34, -44, -39, -49, -59, -69		PT-1-24-02-47	TP-07
-13, -23, -33, -38, -48, -58	-T	PT-1-24-01-51	TP-13
-12, -37		PT-1-24-01-51	TP-13
-13, -14, -23, -24, -33, -34, -44, -38, -39, -48, -49, -58, -59, -69		PT-1-24-03-51	TP-13

1. FOR -12 & -37 LEAD STYLES TUBE PACKAGE -04 THRU -36 POSITION ONLY.
2. FOR -13, -23, -33, -38, -48, & -58 LEAD STYLES TUBE PACKAGE -08 THRU -36 POSITIONS ONLY.
3. FOR -14, -24, -34, -44, -39, -49, -59, & -69 LEAD STYLES -05 THRU -36 POSITIONS ONLY.

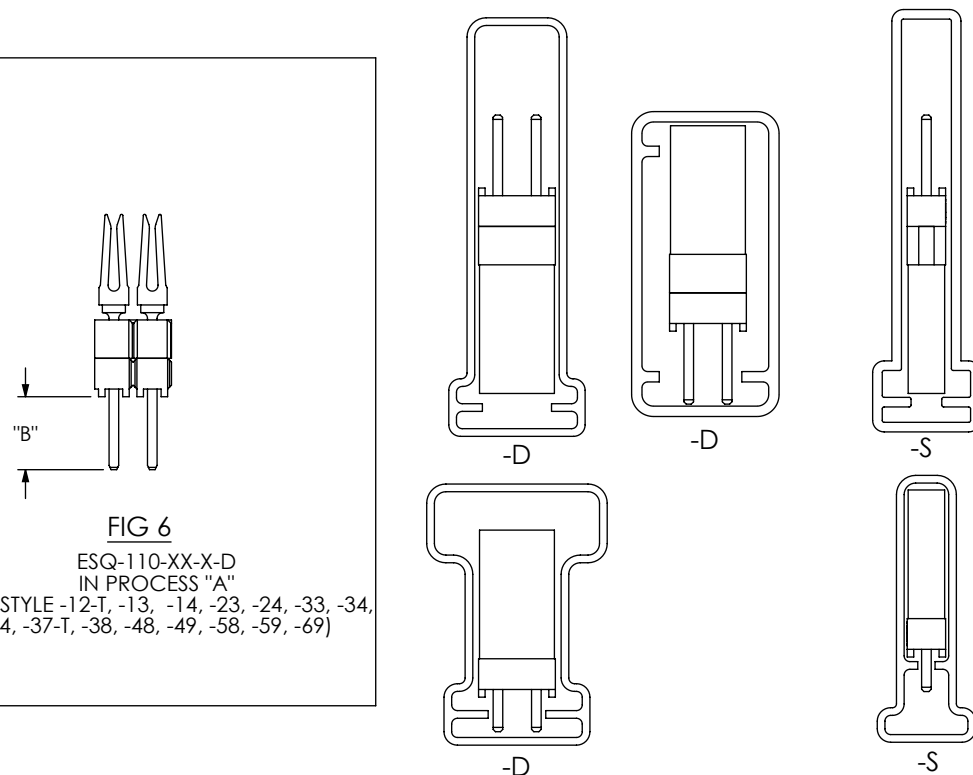


FIG 6
ESQ-110-XX-X-D
IN PROCESS "A"
(LEAD STYLE -12-T, -13, -14, -23, -24, -33, -34,
-44, -37-T, -38, -48, -49, -58, -59, -69)

PROPRIETARY NOTE

THIS DOCUMENT CONTAINS INFORMATION CONFIDENTIAL AND PROPRIETARY TO SAMTEC, INC. AND SHALL NOT BE REPRODUCED OR TRANSFERRED TO OTHER DOCUMENTS OR DISCLOSED TO OTHERS OR USED FOR ANY PURPOSE OTHER THAN THAT WHICH IT WAS OBTAINED WITHOUT THE EXPRESSED WRITTEN CONSENT OF SAMTEC, INC.

DO NOT SCALE DRAWING

SHEET SCALE: 1:1



520 PARK EAST BLVD, NEW ALBANY, IN 47150
PHONE: 812-944-6733 FAX: 812-948-5047
e-Mail info@SAMTEC.com code 55322

DESCRIPTION:

ESQ STRIP ASM

DWG. NO.

ESQ-1XX-XX-X-X-XXX-XX-X-XX

BY: WHITTAKER 9-11-98

SHEET 4 OF 4