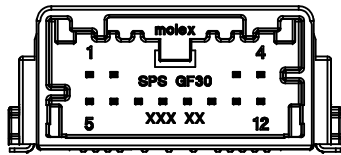
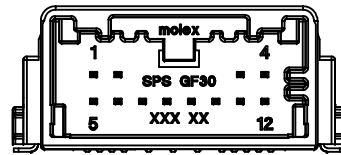


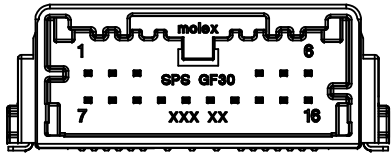
12 CIRCUIT SMT USCAR HEADER
POLARIZATION OPTION A



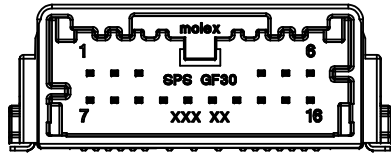
12 CIRCUIT SMT USCAR HEADER
POLARIZATION OPTION B



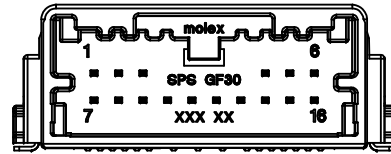
12 CIRCUIT SMT USCAR HEADER
POLARIZATION OPTION C



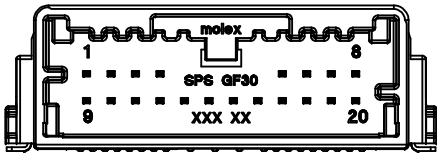
16 CIRCUIT SMT HEADER
POLARIZATION OPTION A



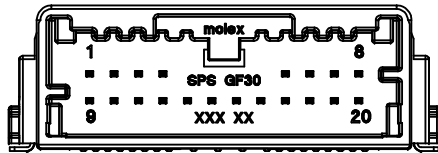
16 CIRCUIT SMT HEADER
POLARIZATION OPTION B



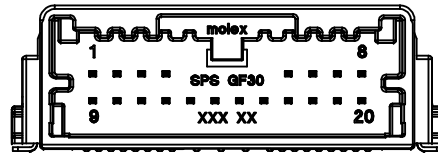
16 CIRCUIT SMT HEADER
POLARIZATION OPTION C



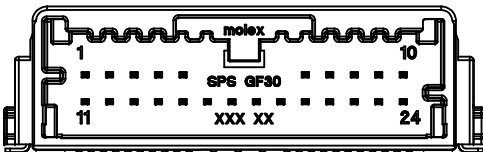
20 CIRCUIT SMT HEADER
POLARIZATION OPTION A



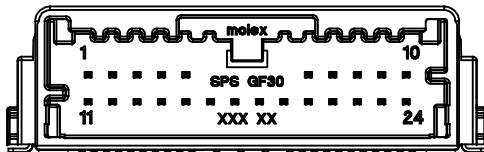
20 CIRCUIT SMT HEADER
POLARIZATION OPTION B



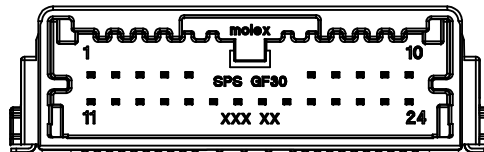
20 CIRCUIT SMT HEADER
POLARIZATION OPTION C



24 CIRCUIT SMT HEADER
POLARIZATION OPTION A



24 CIRCUIT SMT HEADER
POLARIZATION OPTION B



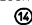
24 CIRCUIT SMT HEADER
POLARIZATION OPTION C

NOTES: VALID UNLESS OTHERWISE SPECIFIED

1. GENERAL:
 - a. APPLICATION SPECIFICATION SEE: AS-34791-020
 - b. PRODUCT SPECIFICATION SEE: PS-34791-020
 - c. PACKAGING SPECIFICATION PER MOLEX DRAWING: SEE CHART
 - d. SOLDERABILITY PER SMES-152
 - e. PARTS MUST BE IN COMPLIANCE TO MOLEX CHEMICAL SUBSTANCES FOR PRODUCTS AND PACKAGING SPECIFICATION: OEHs-699000-300
 - f. DATA MUST BE SUBMITTED UNDER THE MOLEX PART NUMBER TO IMDS (COMPANY ID#13255)
 - g. FLAMMABILITY REQUIREMENT: PER ISO3795 OR GM3191
 - h. VISUAL DEFECTS SHALL MEET COSMETIC STANDARD PS-45499-002 (Class B)

2. DESIGN - MATERIALS:
 - a. SHROUD (PLASTIC HOUSING): SPS 30% GF, 20% REGRIND MAX PER WEIGHT
 - b. BLADES:
 - BASE METAL: C260 BRASS
 - PLATING REQUIREMENTS:
 - TIN OVER NICKEL:
 - UNDERPLATING:
 - OVERALL NICKEL
 - OVERPLATING:
 - OVERALL TIN
 - GOLD:
 - UNDERPLATING:
 - OVERALL NICKEL
 - OVERPLATING:
 - CONTACT AREA: ELECTRODEPOSITED GOLD
 - 0.76 MICROMETERS MINIMUM HARD GOLD
 - PCB CONTACT AREA: ELECTRODEPOSITED TIN MATTE FINISH
 - 2.5 MICROMETERS MINIMUM THICKNESS

3. DESIGN - GEOMETRY:
 - a. THIS IS A 100% CAD GENERATED PART. THE CAD MATHEMATICAL DATA IS THE MASTER FOR THIS PART. FOR DIMENSIONAL OR ANY INFORMATION NOT SHOWN ON THIS DRAWING, ANALYZE THE CAD MODEL.
 - b. GEOMETRIC DIMENSIONS AND TOLERANCES PER ASME Y14.5M - 2009
 - c. GENERAL TOLERANCES: SEE TITLE BLOCK
 - d. EDGES AND UNDIMENSIONED DETAILS PER ISO13715
 - e. CORNERS SHOWN AS SHARP TO BE R 0.1 MAX
 - f. LETTERING SHALL BE 0.10 MAX RAISED. THIS INCLUDES RECYCLING CODE, PLANT AND CAVITY ID, VENDOR ID, AND CIRCUIT ID.

LAST BALLOON ON DRAWING:

 DELETED BALLOONS:

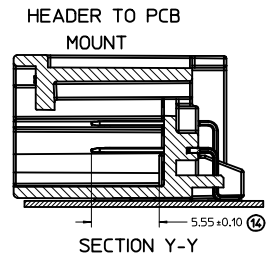
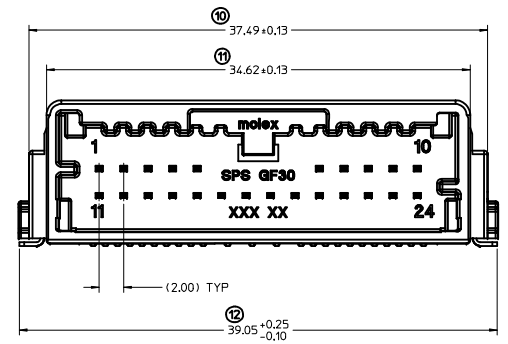
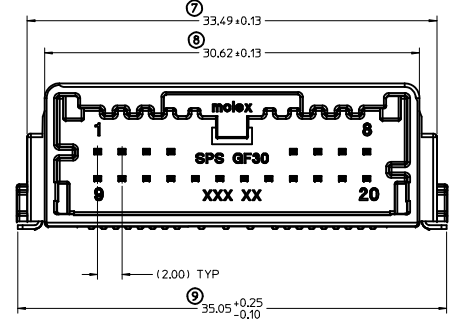
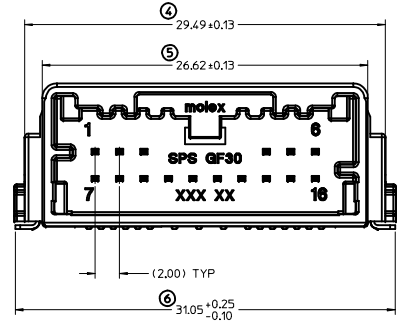
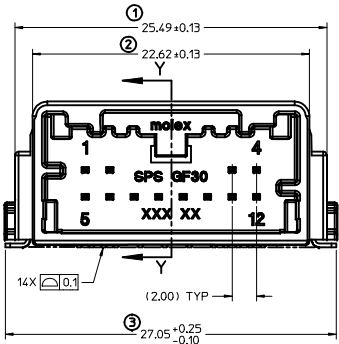
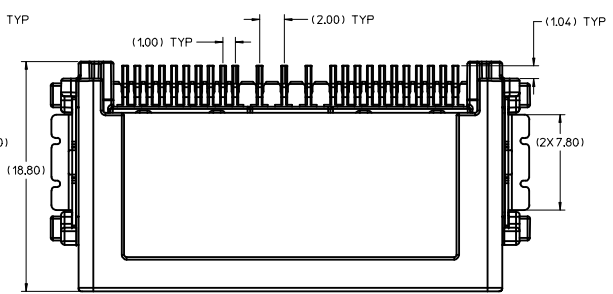
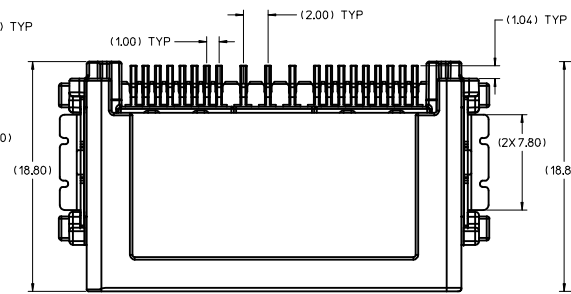
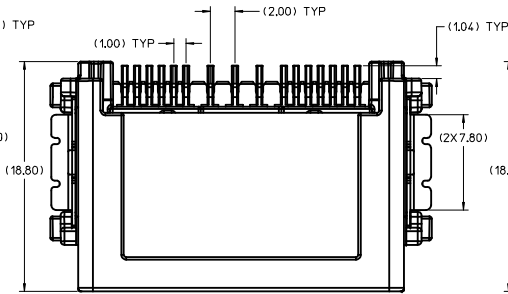
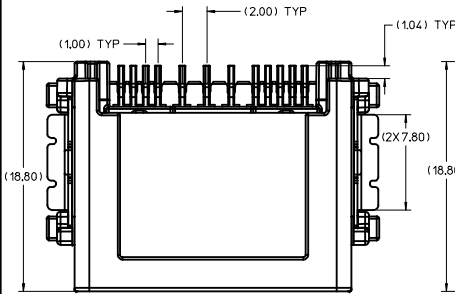
GOLD PLATING EC NO. UAU2017-0254 DRAWN BY: CHYK APPR: RBALMAN 2016/09/21 2016/09/26	QUALITY SYMBOLS ∇=0 ∇=0 ∇=0	GENERAL TOLERANCES (UNLESS SPECIFIED)		DIMENSION STYLE MM ONLY	SCALE 5:1	DESIGN UNITS METRIC	THIRD ANGLE PROJECTION	
		4 PLACES ± mm ± INCH	3 PLACES ± --- ± ---	DRAWN BY DATE TMACHUGA 2011/11/23	TITLE MINI 50 DUAL ROW SMT HEADER ASSEMBLY SALES DRAWING			
		2 PLACES ± 0.10 ± ---	1 PLACE ± 0.20 ± ---	CHECKED BY DATE DATE	MOLEX INCORPORATED			
		ANGULAR ± 1°		APPROVED BY DATE SMARCEAU 2011/12/19	MATERIAL NO. SEE CHART	DOCUMENT NO. SD-34897-001	SHEET NO. 1 OF 5	
DRAFT WHERE APPLICABLE MUST REMAIN WITHIN DIMENSIONS		THIS DRAWING CONTAINS INFORMATION THAT IS PROPRIETARY TO MOLEX INCORPORATED AND SHOULD NOT BE USED WITHOUT WRITTEN PERMISSION						

12 CKT SMT USCAR HEADER

16 CKT SMT HEADER

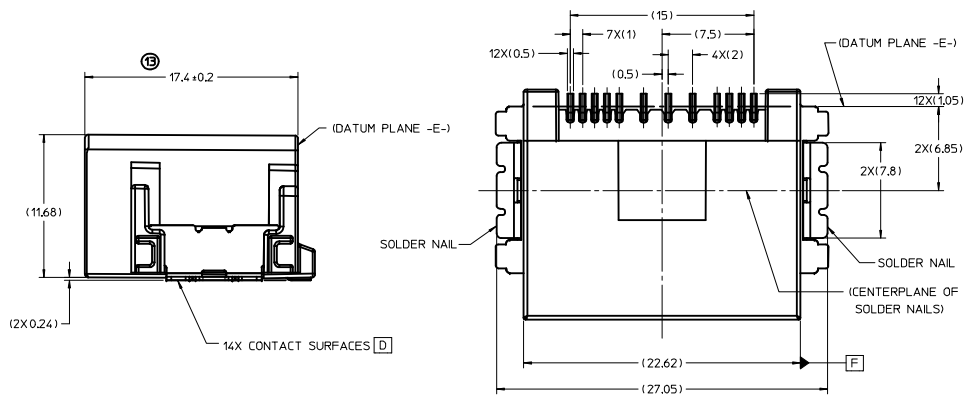
20 CKT SMT HEADER

24 CKT SMT HEADER

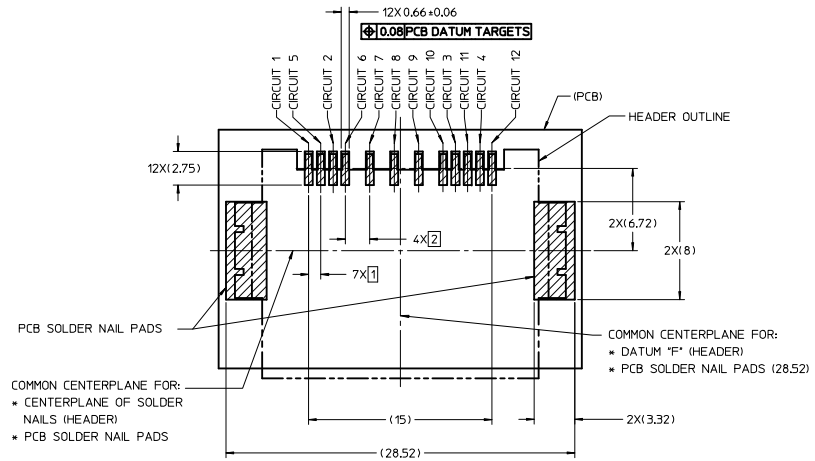


GOLD PLATING IEC NO. UAU2017-0254 DRAWN BY: CHYK APPR: RBALMAN DATE: 2016/09/27	QUALITY SYMBOLS ▽=0 ▽=0 ▽=0	GENERAL TOLERANCES (UNLESS SPECIFIED)		DIMENSION STYLE MM ONLY	SCALE 5:1	DESIGN UNITS METRIC	THIRD ANGLE PROJECTION		
		4 PLACES ± --- ± --- 3 PLACES ± --- ± --- 2 PLACES ± 0.10 ± --- 1 PLACE ± 0.20 ± ---	mm INCH	DRAWN BY: TMACHUGA DATE: 2011/11/23	CHECKED BY: --- DATE: ---	TITLE MINI 50 DUAL ROW SMT HEADER ASSEMBLY SALES DRAWING			
		DRAFT WHERE APPLICABLE MUST REMAIN WITHIN DIMENSIONS		APPROVED BY: SMARCEAU DATE: 2011/12/19	MATERIAL NO. SEE CHART		MOLEX INCORPORATED		
				DOCUMENT NO. SD-34897-001		SHEET NO. 2 OF 5			

RECOMMENDED PCB LAYOUT:



12 CKT SMT USCAR HEADER (BOTTOM VIEW)

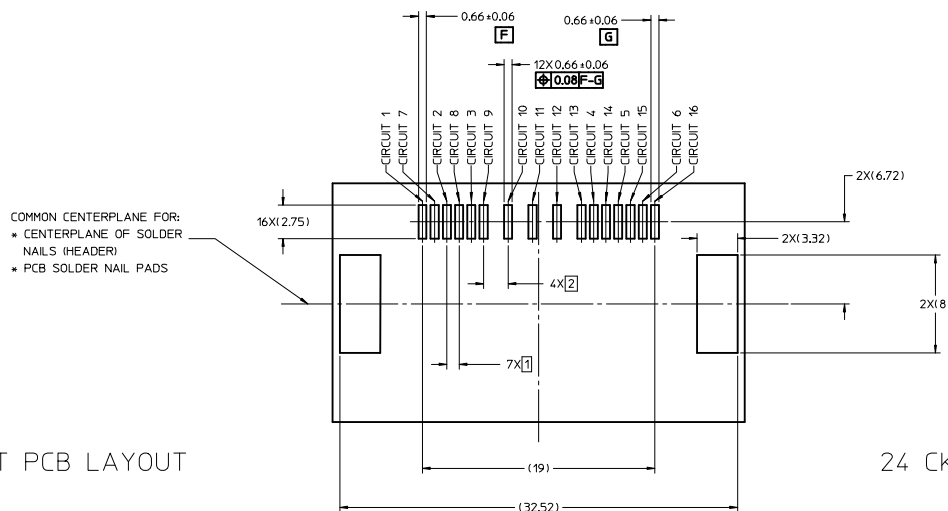


12 CKT PCB LAYOUT
(OTHER CIRCUIT SIZES ARE SIMILAR)

GOLD PLATING IEC NO. UAU2017-0254 DRAWN BY: DRW/HEWITT CHYK: 2016/09/21 APPR: RBALMAN 2016/09/26	QUALITY SYMBOLS	GENERAL TOLERANCES (UNLESS SPECIFIED)	DIMENSION STYLE	SCALE	DESIGN UNITS	THIRD ANGLE PROJECTION
	▽=0	4 PLACES ± mm	MM ONLY	10:1	METRIC	☉
	▽=0	3 PLACES ± 0.10	INCH	DRAWN BY: TMACHUGA	DATE: 2011/11/23	TITLE: MINI 50 DUAL ROW SMT HEADER ASSEMBLY SALES DRAWING
	▽=0	2 PLACES ± 0.20	APPROVED BY: SMARCEAU	DATE: 2011/12/19	DATE: 2011/11/23	DATE: 2011/12/19
	ANGULAR ± 1 °	DRAFT WHERE APPLICABLE MUST REMAIN WITHIN DIMENSIONS	MATERIAL NO. SEE CHART	DOCUMENT NO. SD-34897-001	SHEET NO. 3 OF 5	
			SIZE D	THIS DRAWING CONTAINS INFORMATION THAT IS PROPRIETARY TO MOLEX INCORPORATED AND SHOULD NOT BE USED WITHOUT WRITTEN PERMISSION		

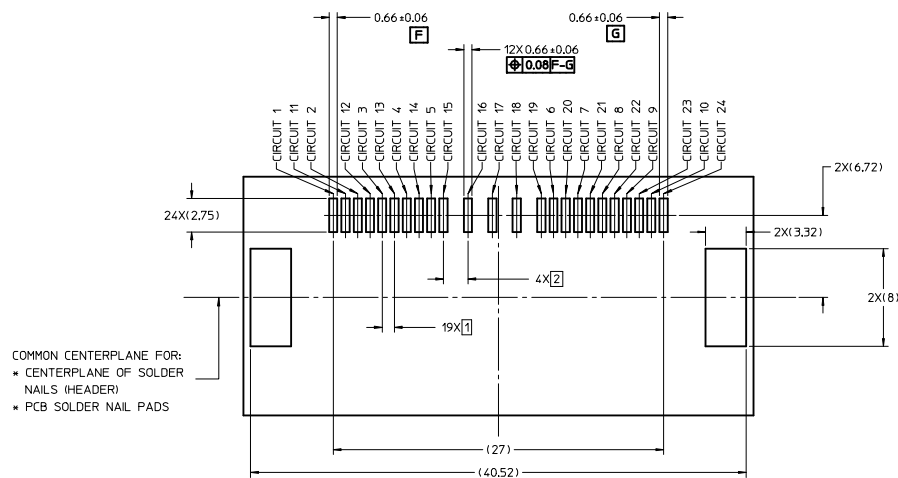
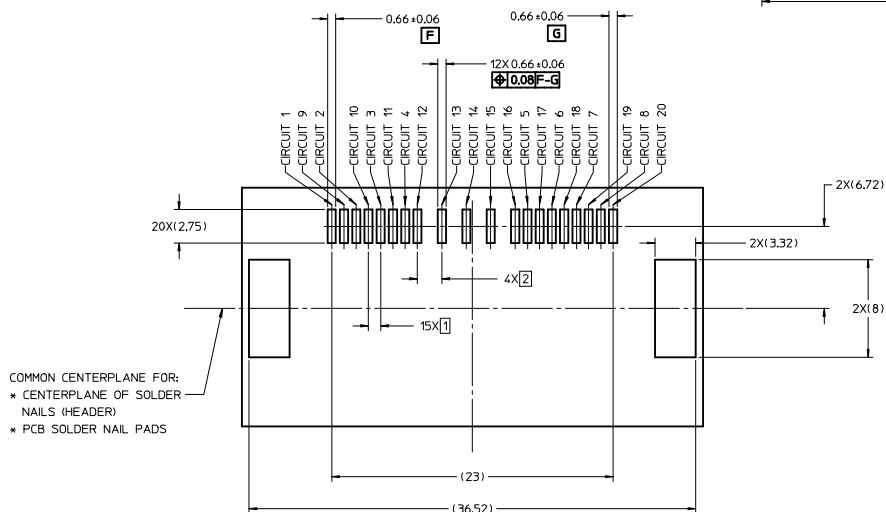
16 CKT PCB LAYOUT

RECOMMENDED PCB LAYOUT:



20 CKT PCB LAYOUT

24 CKT PCB LAYOUT



GOLD PLATING EC NO. UAU2017-0254 DRAWN BY: CHYD APPR: RBALMAN 2016/09/21 2016/09/26	QUALITY SYMBOLS	GENERAL TOLERANCES (UNLESS SPECIFIED)	DIMENSION STYLE	SCALE	DESIGN UNITS	THIRD ANGLE PROJECTION
	▽=0	mm INCH	MM ONLY	5:1	METRIC	☉
	▽=0	4 PLACES ± --- ± ---	DRAWN BY: TMACHUGA	DATE: 2011/11/23	TITLE:	MINI 50 DUAL ROW SMT HEADER ASSEMBLY SALES DRAWING
	▽=0	3 PLACES ± --- ± ---	CHECKED BY:	DATE:	molex	
	2 PLACES ± 0.10 ± ---	1 PLACE ± 0.20 ± ---	APPROVED BY: SMARCEAU	DATE: 2011/12/19	MATERIAL NO.:	DOCUMENT NO. SD-34897-001
	0 PLACE ± ±	ANGULAR ± 1 °	DRAFT WHERE APPLICABLE MUST REMAIN WITHIN DIMENSIONS		SIZE: D	SHEET NO. 4 OF 5

MINI50 SMT DUAL ROW HEADER ASSEMBLIES

MATERIAL NUMBER TUBE PACKAGING PK-31301-688	MATERIAL NUMBER TAPE AND REEL PACKAGING PK-31301-786	CONFIGURATION	CIRCUIT	POL	COLOR	BLADE PLATING	MATING COMPONENT	
							UN-BRIDGED	BRIDGED
34897-5120	34897-6120	USCAR	12	A	BLACK	GOLD	34824-0124	34824-1124
34897-5121	34897-6121	USCAR	12	B	GRAY	GOLD	34824-0125	34824-1125
34897-5122	34897-6122	USCAR	12	C	DARK GRAY	GOLD	34824-0126	34824-1126
34897-5160	34897-6160	USCAR	16	A	BLACK	GOLD	34824-0160	34824-1160
34897-5161	34897-6161	USCAR	16	B	GRAY	GOLD	34824-0161	34824-1161
34897-5162	34897-6162	USCAR	16	C	DARK GRAY	GOLD	34824-0162	34824-1162
34897-5200	34897-6200	USCAR	20	A	BLACK	GOLD	34824-0200	34824-1200
34897-5201	34897-6201	USCAR	20	B	GRAY	GOLD	34824-0201	34824-1201
34897-5202	34897-6202	USCAR	20	C	DARK GRAY	GOLD	34824-0202	34824-1202
34897-5240	34897-6240	USCAR	24	A	BLACK	GOLD	34824-0240	34824-1240
34897-5241	34897-6241	USCAR	24	B	GRAY	GOLD	34824-0241	34824-1241
34897-5242	34897-6242	USCAR	24	C	DARK GRAY	GOLD	34824-0242	34824-1242

MATERIAL NUMBER TUBE PACKAGING PK-31301-688	MATERIAL NUMBER TAPE AND REEL PACKAGING PK-31301-786	CONFIGURATION	CIRCUIT	POL	COLOR	BLADE PLATING	MATING COMPONENT	
							UN-BRIDGED	BRIDGED
34897-9120	34897-8120	USCAR	12	A	BLACK	TIN OVER NICKEL	34824-0124	34824-1124
34897-9121	34897-8121	USCAR	12	B	GRAY	TIN OVER NICKEL	34824-0125	34824-1125
34897-9122	34897-8122	USCAR	12	C	DARK GRAY	TIN OVER NICKEL	34824-0126	34824-1126
34897-9160	34897-8160	USCAR	16	A	BLACK	TIN OVER NICKEL	34824-0160	34824-1160
34897-9161	34897-8161	USCAR	16	B	GRAY	TIN OVER NICKEL	34824-0161	34824-1161
34897-9162	34897-8162	USCAR	16	C	DARK GRAY	TIN OVER NICKEL	34824-0162	34824-1162
34897-9200	34897-8200	USCAR	20	A	BLACK	TIN OVER NICKEL	34824-0200	34824-1200
34897-9201	34897-8201	USCAR	20	B	GRAY	TIN OVER NICKEL	34824-0201	34824-1201
34897-9202	34897-8202	USCAR	20	C	DARK GRAY	TIN OVER NICKEL	34824-0202	34824-1202
34897-9240	34897-8240	USCAR	24	A	BLACK	TIN OVER NICKEL	34824-0240	34824-1240
34897-9241	34897-8241	USCAR	24	B	GRAY	TIN OVER NICKEL	34824-0241	34824-1241
34897-9242	34897-8242	USCAR	24	C	DARK GRAY	TIN OVER NICKEL	34824-0242	34824-1242

GOLD PLATING EC NO. UAU2017-0254 DRAWN BY CHKD: APPR:RBALMAN 2016/09/21 2016/09/26	QUALITY SYMBOLS ∇=0 ∇=0 ∇=0	GENERAL TOLERANCES (UNLESS SPECIFIED) mm INCH		DIMENSION STYLE MM ONLY	SCALE 10:1	DESIGN UNITS METRIC	THIRD ANGLE PROJECTION		
		4 PLACES ± --- ± --- 3 PLACES ± --- ± --- 2 PLACES ± 0.10 ± --- 1 PLACE ± 0.20 ± --- 0 PLACE ± ±	DRAWN BY TMACHUGA	DATE 2011/11/23	TITLE MINI 50 DUAL ROW SMT HEADER ASSEMBLY SALES DRAWING		MATERIAL NO. SEE CHART		DOCUMENT NO. SD-34897-001
		ANGULAR ± 1 ° DRAFT WHERE APPLICABLE MUST REMAIN WITHIN DIMENSIONS	APPROVED BY SMARCEAU	DATE 2011/12/19	SHEET NO. 5 OF 5		THIS DRAWING CONTAINS INFORMATION THAT IS PROPRIETARY TO MOLEX INCORPORATED AND SHOULD NOT BE USED WITHOUT WRITTEN PERMISSION		