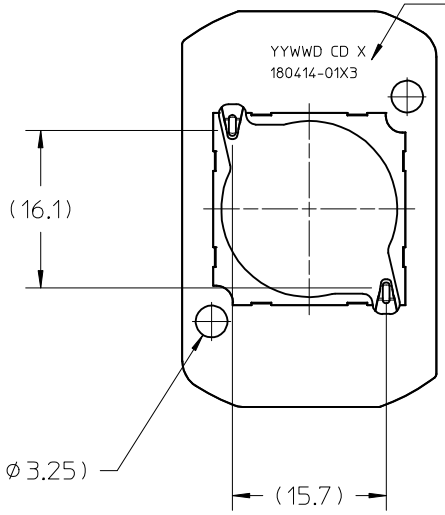
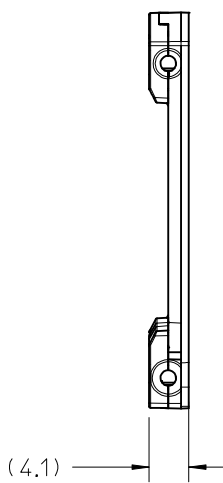
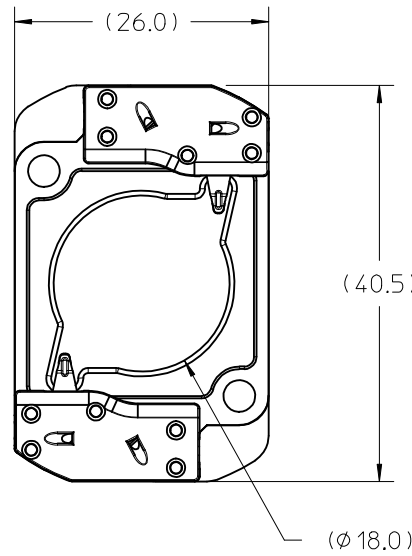
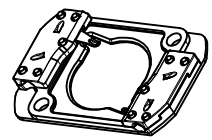


10	9	8	7	6	5	4	3	2	1
PART NUMBER	DESCRIPTION				MATERIAL			AGENCY APPROVAL	
180414-0103	COB LED HOLDER 19.0MM X 19.0MM SQUARE				POLYAMIDE (PA66) GLASS FILLED, COLOR: NATURAL			UL496 FILE E345583	
180414-0113	COB LED HOLDER 19.0MM X 19.0MM SQUARE				POLYESTER (PBT) GLASS FILLED, COLOR: WHITE			UL496 FILE E345583	
180414-0203	COB LED HOLDER 19.0MM X 19.0MM SQUARE WITH TAB CAP				POLYAMIDE (PA66) GLASS FILLED, COLOR: NATURAL			UL496 FILE E345583	
180414-0213	COB LED HOLDER 19.0MM X 19.0MM SQUARE WITH TAB CAP				POLYESTER (PBT) GLASS FILLED, COLOR: WHITE			UL496 FILE E345583	

HOLDER ASSEMBLY  
P/N 180414-0103  
P/N 180414-0113



PART MARKED WITH  
DATE CODE (YYWWD)  
MFG PLANT (CD)  
REVISION (X)  
PART NUMBER (180414-01X3)



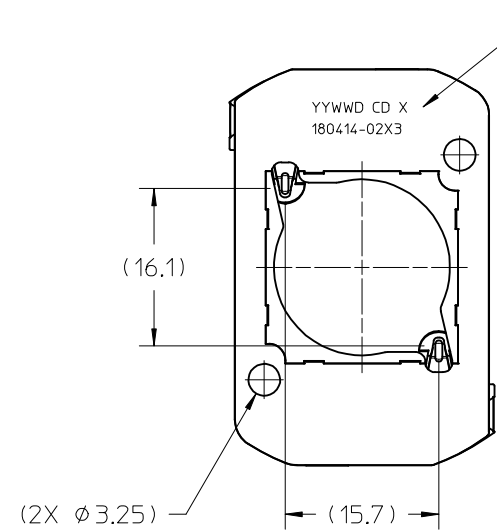
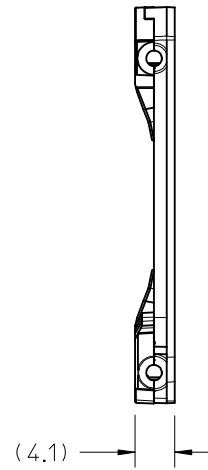
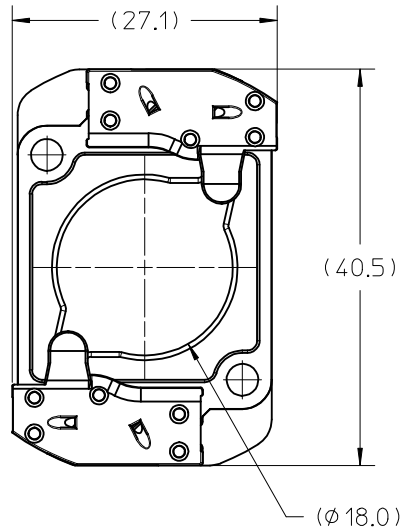
ISOMETRIC VIEW 1  
SCALE 1:1

- NOTES:
1. MATERIALS: HOUSING: SEE CHART; TERMINAL: COPPER ALLOY
  2. FINISHES: TERMINAL: NICKEL (Ni) UNDERPLATE 1.27  $\mu$ m, SELECT TIN (Sn) 2.54  $\mu$ m, SELECT GOLD (Au) 0.76  $\mu$ m
  3. PRODUCT SPECIFICATION: PS-180414-001
  4. PACKAGING SPECIFICATION: PK-180419-006
  5. APPLICATION SPECIFICATION: AS-180412-001
  6. SEE SHEET 3 FOR APPLICATION NOTES
  7. ELV AND ROHS COMPLIANT
  8. ALL DIMENSIONS IN PARENTHESIS (XX.XX) ARE FOR REFERENCE ONLY.

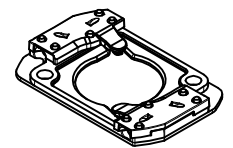
ENTER DESCRIPTION EC NO: SSL2016-0054 DRAWN: ZABJANOVSKI 2016/03/29 CHKD: APPR: GMEYER 2016/04/11 REV	QUALITY SYMBOLS	GENERAL TOLERANCES (UNLESS SPECIFIED)	DIMENSION STYLE	SCALE	DESIGN UNITS	THIRD ANGLE PROJECTION
	$\nabla F=0$ $\nabla E=0$ $\nabla F=0$	mm	MM ONLY	2:1	METRIC	
		INCH	DRAWN BY	DATE	TITLE	
		4 PLACES ± --- ± ---	MDEVITO	2012/04/16	COB LED HOLDER 19.0 MM X 19.0 MM SQUARE	
3 PLACES ± --- ± ---	CHECKED BY	DATE				
2 PLACES ± 0.13 ± ---	MCOLE	2012/08/06				
1 PLACE ± 0.25 ± ---	APPROVED BY	DATE	DOCUMENT NO.	SHEET NO.		
0 PLACE ± --- ± ---	DMCGOWAN	2012/08/06	SD-180414-103	1 OF 3		
DRAFT WHERE APPLICABLE MUST REMAIN WITHIN DIMENSIONS		SEE CHART		THIS DRAWING CONTAINS INFORMATION THAT IS PROPRIETARY TO MOLEX INCORPORATED AND SHOULD NOT BE USED WITHOUT WRITTEN PERMISSION		

10 9 8 7 6 5 4 3 2 1

HOLDER ASSEMBLY WITH TAB CAP  
P/N 180414-0203  
P/N 180414-0213



PART MARKED WITH  
DATE CODE (YYWWD)  
MFG PLANT (CD)  
REVISION (X)  
PART NUMBER (180414-02X3)

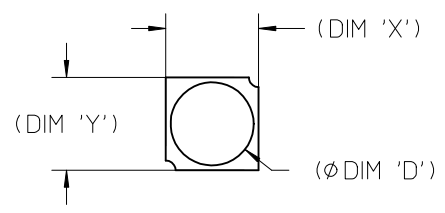


ISOMETRIC VIEW 2  
SCALE 1:1

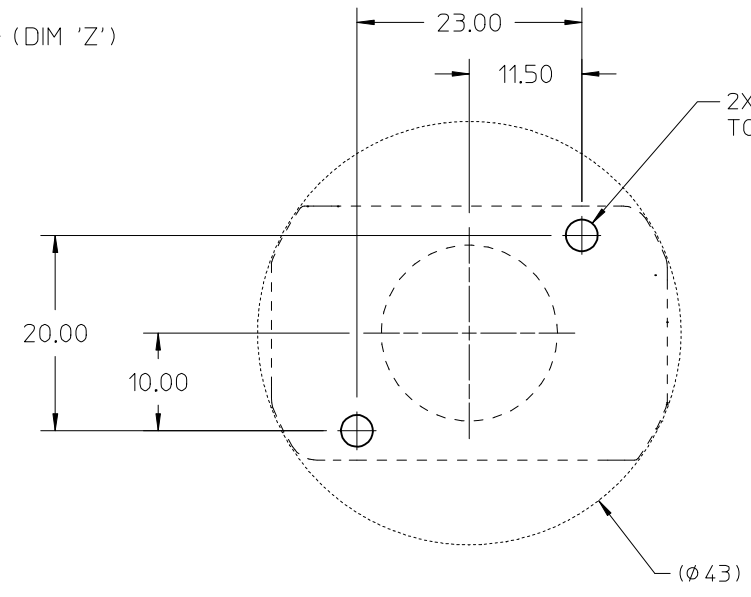
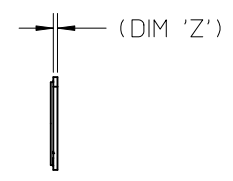
<b>ENTER DESCRIPTION</b> EC NO: SSL2016-0054 DRWNL:ZAB,JANOVSKI 2016/03/29 CHKD: APPR:GMEYER 2016/04/11 REV	QUALITY SYMBOLS	GENERAL TOLERANCES (UNLESS SPECIFIED)	DIMENSION STYLE <b>MM ONLY</b>		SCALE <b>2:1</b>	DESIGN UNITS <b>METRIC</b>	THIRD ANGLE PROJECTION
	▽=0	mm INCH	DRAWN BY MDEVITO	DATE 2012/04/16	<b>COB LED HOLDER</b> <b>19.0 MM X 19.0 MM SQUARE</b>  <b>molex</b>		
	▽=0	4 PLACES ± --- ± ---	CHECKED BY MCOLE	DATE 2012/08/06			
	▽=0	3 PLACES ± --- ± ---	APPROVED BY DMCGOWAN	DATE 2012/08/06	MATERIAL NO.	DOCUMENT NO.	SHEET NO.
▽=0	2 PLACES ± 0.13 ± ---	SEE CHART		SD-180414-103	2 OF 3		
	1 PLACE ± 0.25 ± ---	THIS DRAWING CONTAINS INFORMATION THAT IS PROPRIETARY TO MOLEX INCORPORATED AND SHOULD NOT BE USED WITHOUT WRITTEN PERMISSION					
	0 PLACE ± --- ± ---						

9 8 7 6 5 4 3 2 1

10	9	8	7	6	5	4	3	2	1
COB MFG	TYPE		DIM 'X'	DIM 'Y'	DIM 'Z'	DIM 'D'			
CITIZEN	CLL030, CLL032, CLU034, CLU720		19.0	19.0	0.9	17.0			
TRIDONIC	LES17		19.0	19.0	1.1	17.0			
SEOUL	ZC12, ZC18		19.0	19.0	0.9	16.0			



COB LED  
SCALE 1:1



2X M3 OR 4-40 THREADED HOLES  
TORQUE: CERAMIC 0.2 N-M MIN TO 0.4 N-M MAX  
ALUMINUM 0.4 N-M MIN TO 0.8 N-M MAX

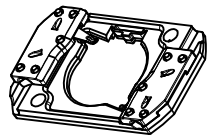
RECOMMENDED MOUNTING DIMENSIONS

NOTES:

1. WIRE GAUGE: 18, 20, OR 22 AWG, SOLID OR STRANDED WITH TIN OVERCOAT. STRIP LENGTH 10MM +2.0/-0.0MM. RECOMMENDED MAXIMUM DIAMETER AFTER TINNING: 1.40MM. LARGER DIAMETER WIRES ARE ACCEPTABLE IF FULLY INSERTABLE IN WIRE TRAP AND NO WITHDRAWAL WITHIN 20N FORCE.

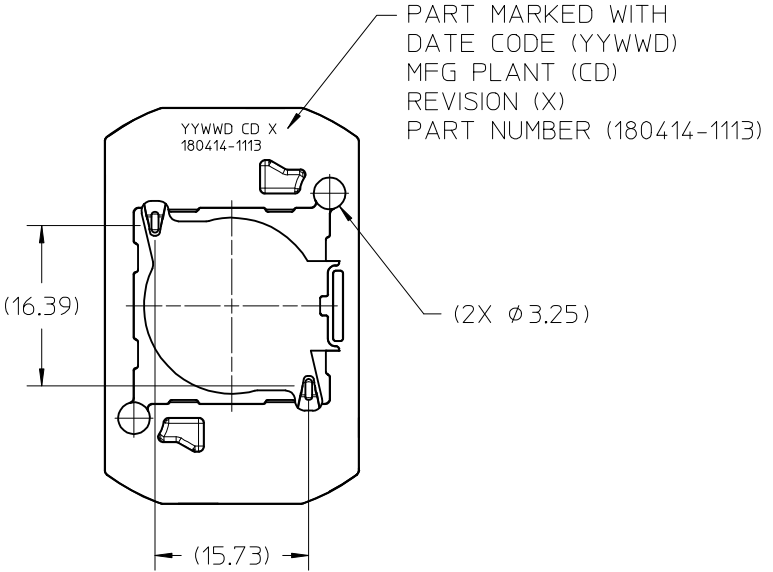
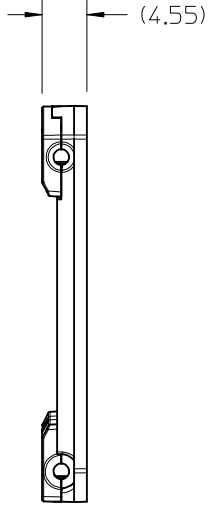
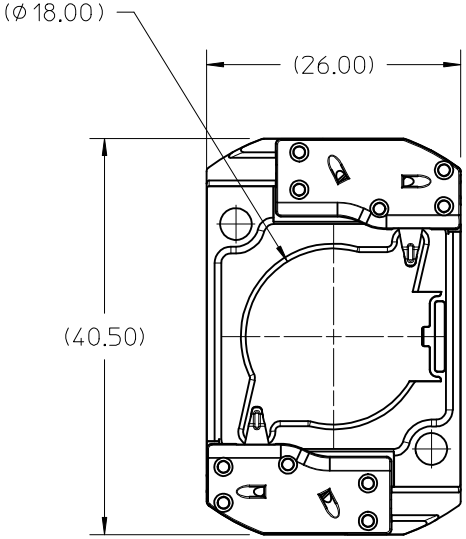
<b>ENTER DESCRIPTION</b> EC NO: SSL2016-0054 DRAWN: ZABJANOVSKI 2016/03/29 CHKD: APPR: GMEYER 2016/04/11 REV	QUALITY SYMBOLS	GENERAL TOLERANCES (UNLESS SPECIFIED)	DIMENSION STYLE	SCALE	DESIGN UNITS	THIRD ANGLE PROJECTION
	$\nabla Z=0$	mm INCH	MM ONLY	2:1	METRIC	
	$\nabla F=0$	4 PLACES $\pm$ --- $\pm$ ---	DRAWN BY DATE	TITLE		
	$\nabla E=0$	3 PLACES $\pm$ --- $\pm$ ---	MDEVITO 2012/04/16	COB LED HOLDER		
$\nabla F=0$	2 PLACES $\pm$ 0.13 $\pm$ ---	CHECKED BY DATE	19.0 MM X 19.0 MM SQUARE			
$\nabla E=0$	1 PLACE $\pm$ 0.25 $\pm$ ---	MCOLE 2012/08/06	molex			
	0 PLACE $\pm$ --- $\pm$ ---	APPROVED BY DATE	DOCUMENT NO.			
		DMCGOWAN 2012/08/06	SD-180414-103			
		MATERIAL NO.	SHEET NO.			
		SEE CHART	3 OF 3			
		SIZE B	THIS DRAWING CONTAINS INFORMATION THAT IS PROPRIETARY TO MOLEX INCORPORATED AND SHOULD NOT BE USED WITHOUT WRITTEN PERMISSION			

10	9	8	7	6	5	4	3	2	1
PART NUMBER	DESCRIPTION		POCKET DEPTH	HOUSING	TERMINAL	CAP			
180414-1113	COB LED HOLDER ASSEMBLY		0.90	180413-1113	180155-0133	180154-0105			
180414-2113	COB LED HOLDER ASSEMBLY		0.75	180413-2113	180155-0133	180154-0105			



ISO VIEW 1  
SCALE 1:1

P/N 180414-1113 HOLDER ASSEMBLY  
(0.90 POCKET DEPTH)



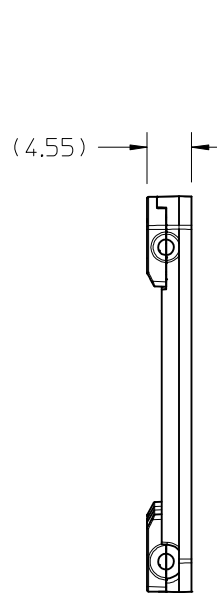
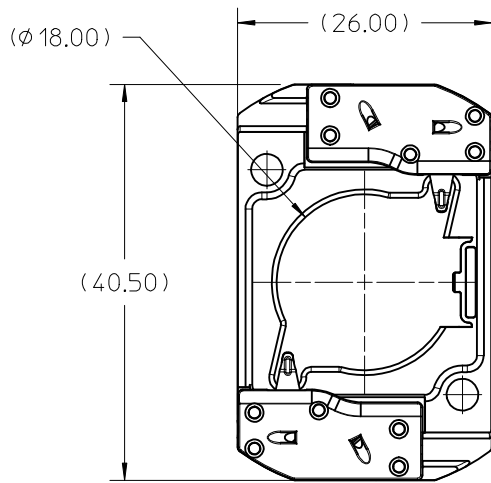
PART MARKED WITH  
DATE CODE (YYWWD)  
MFG PLANT (CD)  
REVISION (X)  
PART NUMBER (180414-1113)

- NOTES:
1. MATERIALS: HOUSING AND CAPS: POLYESTER PBT GLASS FILLED; COLOR: WHITE; TERMINAL: COPPER ALLOY
  2. FINISHES: TERMINAL CONTACT: SELECT GOLD OVER NICKEL WIRE TRAP: SELECT TIN OVER NICKEL
  3. PRODUCT SPECIFICATION:
  4. PACKAGING SPECIFICATION: PK-180419-006
  5. UL:OLFB2 UL496 FILE NO. E345583
  6. ELV AND ROHS COMPLIANT
  7. FOR USE WITH: 19.0 MM X 19.0 MM COB LED
  8. WIRE GAUGE: 18, 20, AND 22 AWG, SOLID OR STRANDED WITH TIN OVERCOAT. STRIP LENGTH 10MM +2.0/-0.0MM.
  9. ALL DIMENSIONS IN PARENTHESES (XX.XX) ARE FOR REFERENCE ONLY

ENTER DESCRIPTION EC NO: SSL2016-0052 DRAWN: JUILLES_SLL 2016/03/23 CHKD: GMEYER 2016/03/23 APPR: GMEYER 2016/05/13	QUALITY SYMBOLS ▽/0 ▽/0 ▽/0	GENERAL TOLERANCES (UNLESS SPECIFIED)		DIMENSION STYLE MM ONLY		SCALE 2:1	DESIGN UNITS METRIC	THIRD ANGLE PROJECTION	
		mm	INCH	DRAWN BY MCOLE	DATE 2013/12/09	TITLE COB LED HOLDER ASSEMBLY 19.0 MM X 19.0 MM SQUARE			
		4 PLACES ± --- ± ---	3 PLACES ± --- ± ---	CHECKED BY MCOLE	DATE 2013/12/09				
		1 PLACE ± 0.25 ± ---	0 PLACE ± --- ± ---	APPROVED BY DMCGOWAN	DATE 2013/12/09	DOCUMENT NO. SD-180414-113		SHEET NO. 1 OF 5	
B2	DESCRIPTION	ANGULAR ±1/2° DRAFT WHERE APPLICABLE MUST REMAIN WITHIN DIMENSIONS		SEE CHART		THIS DRAWING CONTAINS INFORMATION THAT IS PROPRIETARY TO MOLEX INCORPORATED AND SHOULD NOT BE USED WITHOUT WRITTEN PERMISSION			

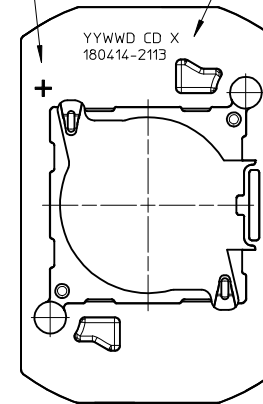
10 9 8 7 6 5 4 3 2 1

# P/N 180414-2113 HOLDER ASSEMBLY (0.75 POCKET DEPTH)



PART MARKED WITH  
POLARITY SIGN "+"

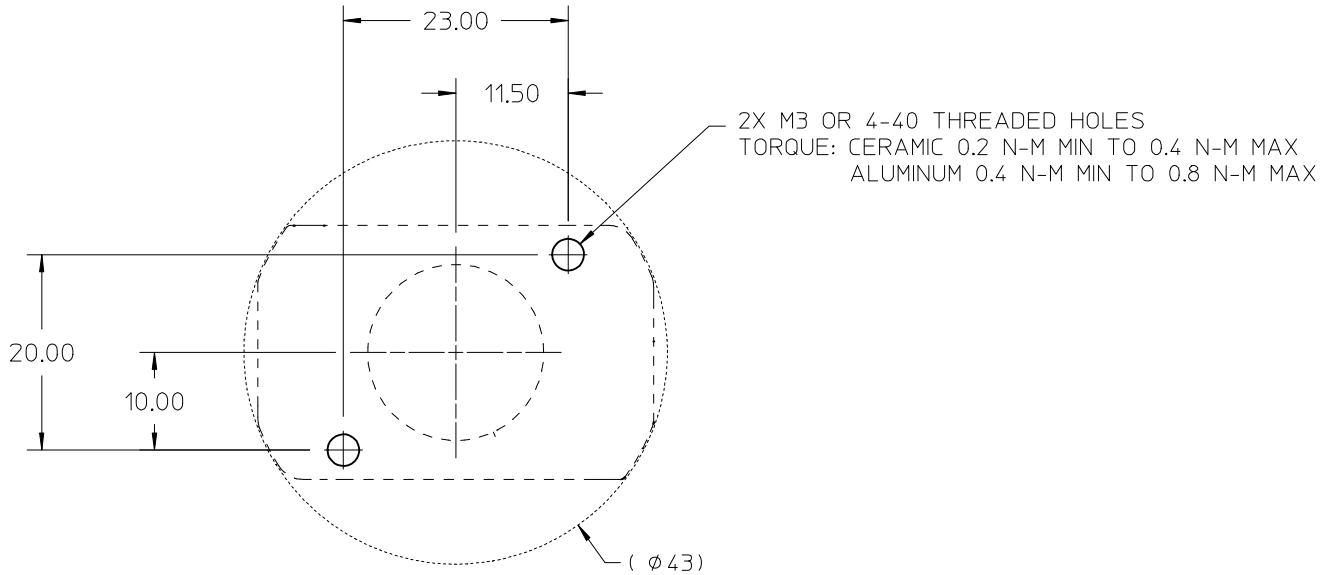
PART MARKED WITH  
DATE CODE (YYWWD)  
MFG PLANT (CD)  
REVISION (X)  
PART NUMBER (180414-2113)



<b>ENTER DESCRIPTION</b> EC NO: SSL2016-0052 DRWN: JUILLES_SSL 2016/03/23 CHKD: GMEYER 2016/03/23 APPR: GMEYER 2016/05/13 B2	QUALITY SYMBOLS ▽=0 ▽=0 ▽=0	GENERAL TOLERANCES (UNLESS SPECIFIED) <table border="1"> <thead> <tr> <th></th> <th>mm</th> <th>INCH</th> </tr> </thead> <tbody> <tr> <td>4 PLACES</td> <td>± ---</td> <td>± ---</td> </tr> <tr> <td>3 PLACES</td> <td>± ---</td> <td>± ---</td> </tr> <tr> <td>2 PLACES</td> <td>± 0.13</td> <td>± ---</td> </tr> <tr> <td>1 PLACE</td> <td>± 0.25</td> <td>± ---</td> </tr> <tr> <td>0 PLACE</td> <td>± ---</td> <td>± ---</td> </tr> </tbody> </table>		mm	INCH	4 PLACES	± ---	± ---	3 PLACES	± ---	± ---	2 PLACES	± 0.13	± ---	1 PLACE	± 0.25	± ---	0 PLACE	± ---	± ---	DIMENSION STYLE <b>MM ONLY</b> DRAWN BY: MCOLE DATE: 2013/12/09 CHECKED BY: MCOLE DATE: 2013/12/09 APPROVED BY: DMCGOWAN DATE: 2013/12/09	SCALE: 2:1 DESIGN UNITS: METRIC THIRD ANGLE PROJECTION
		mm	INCH																			
	4 PLACES	± ---	± ---																			
	3 PLACES	± ---	± ---																			
2 PLACES	± 0.13	± ---																				
1 PLACE	± 0.25	± ---																				
0 PLACE	± ---	± ---																				
	ANGULAR ±1/2° DRAFT WHERE APPLICABLE MUST REMAIN WITHIN DIMENSIONS	MATERIAL NO. <b>SEE CHART</b>	TITLE <b>COB LED HOLDER ASSEMBLY 19.0 MM X 19.0 MM SQUARE</b>	DOCUMENT NO. <b>SD-180414-113</b>																		
		THIS DRAWING CONTAINS INFORMATION THAT IS PROPRIETARY TO MOLEX INCORPORATED AND SHOULD NOT BE USED WITHOUT WRITTEN PERMISSION	SHEET NO. 2 OF 5																			

9 8 7 6 5 4 3 2 1

10 9 8 7 6 5 4 3 2 1



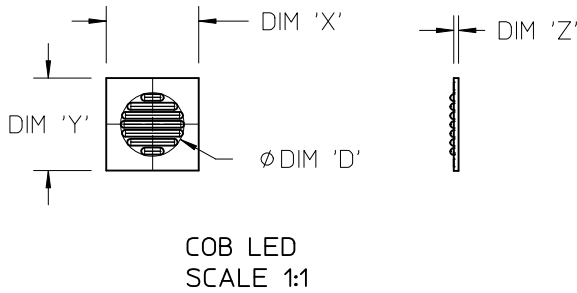
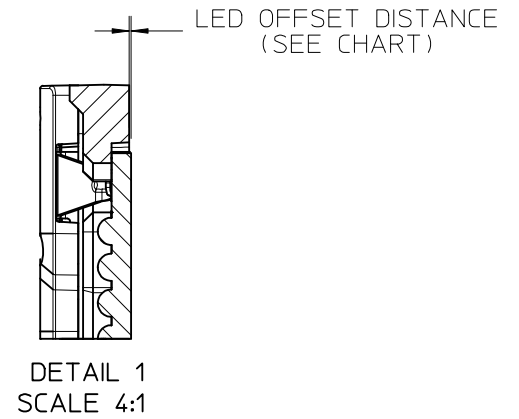
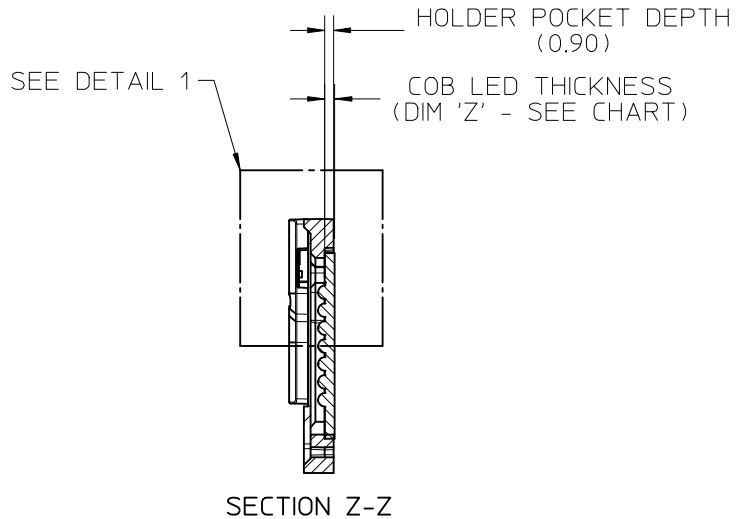
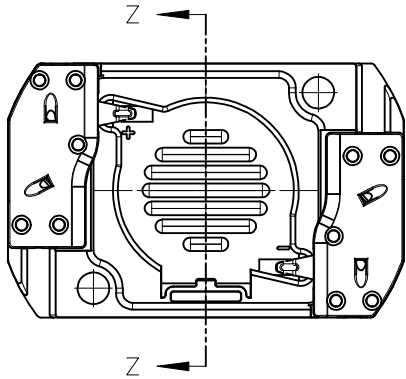
RECOMMENDED MOUNTING DIMENSIONS

<b>ENTER DESCRIPTION</b> EC NO: SSL2016-0052 DRWN: JUILLES_SSL 2016/03/23 CHKD: GMEYER 2016/03/23 APPR: GMEYER 2016/05/13	<b>QUALITY SYMBOLS</b> $\nabla F/0$ $\nabla F/0$ $\nabla F/0$	<b>GENERAL TOLERANCES (UNLESS SPECIFIED)</b>		<b>DIMENSION STYLE</b> MM ONLY		SCALE 2:1	DESIGN UNITS METRIC	THIRD ANGLE PROJECTION		
		4 PLACES $\pm$ --- $\pm$ ---	mm INCH	DRAWN BY MCOLE	DATE 2013/12/09	TITLE COB LED HOLDER ASSEMBLY 19.0 MM X 19.0 MM SQUARE				
		3 PLACES $\pm$ --- $\pm$ ---		CHECKED BY MCOLE	DATE 2013/12/09					
		2 PLACES $\pm 0.13$ $\pm$ ---		APPROVED BY DMCGOWAN	DATE 2013/12/09	DOCUMENT NO. SD-180414-113				
1 PLACE $\pm 0.25$ $\pm$ ---		MATERIAL NO. SEE CHART		SHEET NO. 3 OF 5						
0 PLACE $\pm$ --- $\pm$ ---		ANGULAR $\pm 1/2^\circ$ DRAFT WHERE APPLICABLE MUST REMAIN WITHIN DIMENSIONS							THIS DRAWING CONTAINS INFORMATION THAT IS PROPRIETARY TO MOLEX INCORPORATED AND SHOULD NOT BE USED WITHOUT WRITTEN PERMISSION	
B2	REV									

9 8 7 6 5 4 3 2 1

10	9	8	7	6	5	4	3	2	1
COB MFG	TYPE		DIM 'X'	DIM 'Y'	DIM 'Z'	DIM 'D'	OFFSET		
VOSSLOH-SCHWABE	DMC114, DMC125, DMC128		19.0	19.0	1.0	11.9	0.10		
TRIDONIC	SLE PURE G3 17		19.0	19.0	1.0	13.1	0.10		

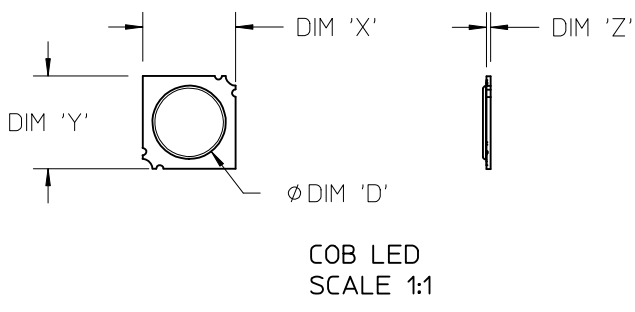
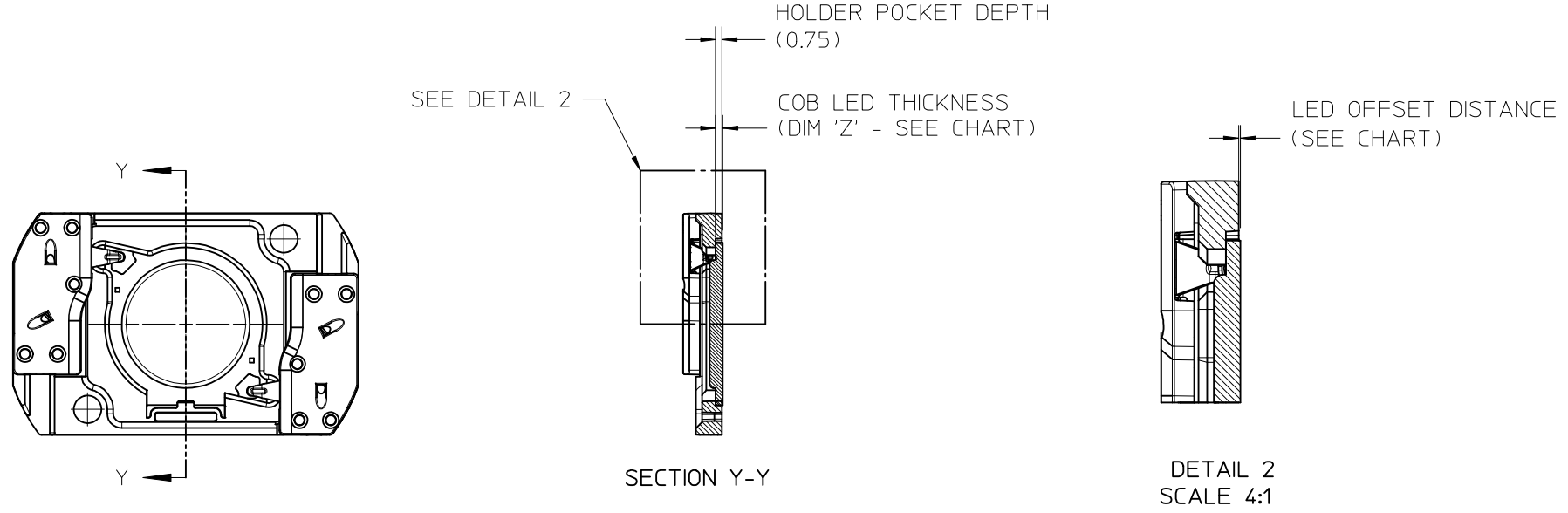
## ILLUSTRATION OF P/N 180414-1113 HOLDER MATED WITH LED



<b>ENTER DESCRIPTION</b> EC NO: SSL2016-0052 DRWN: JUILLES_SLL 2016/03/23 CHKD: GMEYER 2016/03/23 APPR: GMEYER 2016/05/13	<b>DESCRIPTION</b> B2	<b>QUALITY SYMBOLS</b> $\nabla F/0$ $\nabla F/0$ $\nabla F/0$	GENERAL TOLERANCES (UNLESS SPECIFIED)		DIMENSION STYLE		SCALE	DESIGN UNITS	THIRD ANGLE PROJECTION				
					MM ONLY		2:1	METRIC					
					mm	INCH	DRAWN BY	DATE	TITLE				
					4 PLACES	± ---	± ---	MCOLE	2013/12/09	COB LED HOLDER ASSEMBLY 19.0 MM X 19.0 MM SQUARE			
					3 PLACES	± ---	± ---	CHECKED BY	DATE				
		2 PLACES	± 0.13	± ---	MCOLE	2013/12/09							
		1 PLACE	± 0.25	± ---	APPROVED BY	DATE							
		0 PLACE	± ---	± ---	DMCGOWAN	2013/12/09	DOCUMENT NO.		SHEET NO.				
		ANGULAR ±1/2°		MATERIAL NO.		SD-180414-113		4 OF 5					
		DRAFT WHERE APPLICABLE MUST REMAIN WITHIN DIMENSIONS		SEE CHART		THIS DRAWING CONTAINS INFORMATION THAT IS PROPRIETARY TO MOLEX INCORPORATED AND SHOULD NOT BE USED WITHOUT WRITTEN PERMISSION							

COB MFG	TYPE	DIM 'X'	DIM 'Y'	DIM 'Z'	DIM 'D'	OFFSET
CITIZEN	CLL030, CLL032, CLU034	19.0	19.0	0.90	11.2	0.15
SEOUL	ZC12, ZC18	19.0	19.0	0.90	10.0	0.15
TRIDONIC	SLE G4 15	19.0	19.0	0.85	15.0	0.10

ILLUSTRATION OF P/N 180414-2113 HOLDER MATED WITH LED



<b>ENTER DESCRIPTION</b> EC NO: SSL2016-0052 DRWN: JUILLES_SLL 2016/03/23 CHKD: GMEYER 2016/03/23 APPR: GMEYER 2016/05/13	<b>QUALITY SYMBOLS</b> ▽/0 ▽/0 ▽/0	<b>GENERAL TOLERANCES (UNLESS SPECIFIED)</b>		<b>DIMENSION STYLE</b> <b>MM ONLY</b>		<b>SCALE</b> 2:1	<b>DESIGN UNITS</b> METRIC	<b>THIRD ANGLE PROJECTION</b>	
		4 PLACES	± ---	± ---	DRAWN BY MCOLE	DATE 2013/12/09	<b>TITLE</b> COB LED HOLDER ASSEMBLY 19.0 MM X 19.0 MM SQUARE		
		3 PLACES	± ---	± ---	CHECKED BY MCOLE	DATE 2013/12/09			
		2 PLACES	± 0.13	± ---	APPROVED BY DMCGOWAN	DATE 2013/12/09			
		1 PLACE	± 0.25	± ---	<b>MATERIAL NO.</b> SEE CHART				
0 PLACE	± ---	± ---	ANGULAR ±1/2° DRAFT WHERE APPLICABLE MUST REMAIN WITHIN DIMENSIONS		THIS DRAWING CONTAINS INFORMATION THAT IS PROPRIETARY TO MOLEX INCORPORATED AND SHOULD NOT BE USED WITHOUT WRITTEN PERMISSION				