

IEC appliance inlet C14, screw-on mounting, front side, quick connect/screw terminals



8843.FLR

C14



70 °C

**Description**

- Panel Mount:
Screw-on from front side
- Inlet, Pin temperature 70 °C, Protection class I
- Screw

Weblinks

Approvals, RoHS, CHINA-RoHS, e-Store, SCHURTER-Stock-Check, Distributor-Stock-Check

Technical Data

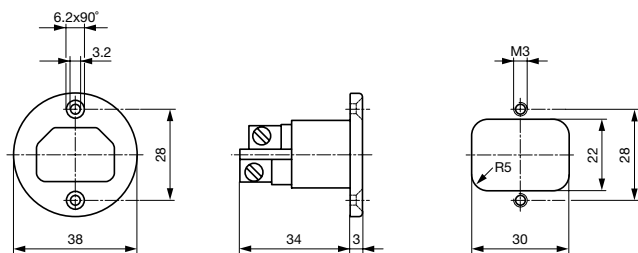
Ratings IEC	10A / 250VAC; Hz 50
Ratings UL/CSA	10A / 250VAC; 60Hz
Dielectric Strength	> 2 kVAC between L-N > 2 kVAC between L/N-PE (1 min/50Hz)
Allowable Operation Temp.	-25 °C to 70 °C
Degree of Protection	from front side IP 40 acc. to IEC 60529
Protection Class	Suitable for appliances with protection class I acc. to IEC 61140
Terminal	Screw
Panel Thickness s	Screw-on: max 8 mm Mounting screw torque max 0.5 Nm
Material: Housing	Thermoset, black, UL 94V-0

Appliance-Inlet /-Outlet	C14 acc. to IEC/EN 60320-1, UL 498, CSA C22.2 no. 42 (for cold condition) pin-temperature 70 °C, 10A, Protection class I
--------------------------	--

Dimensions

8843.FLR

Length |—————| 38 mm



Screw M3

Variants

Distributor-Stock-Check | SCHURTER-Stock-Check | e-Store

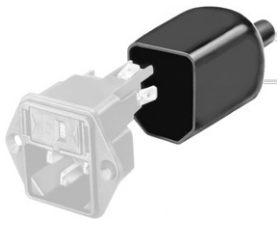
Type	Order Number
8843.FLR	4300.0066

Packaging unit

50 Pcs

Accessory

Description



Assorted Covers
Rear Cover