



Datasheet
Cable Assemblies [Overview](#)

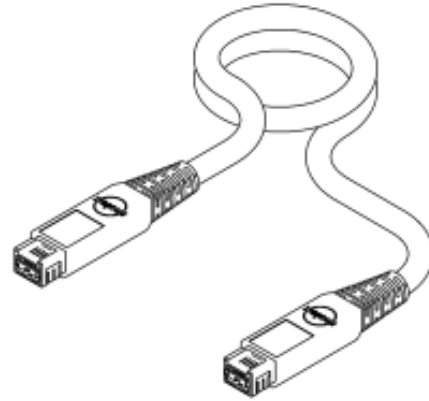
[Home](#) > [Products](#) > [Cable](#) > [Assemblies](#) > [Datasheet](#)

44610-0002

Cable Assembly, IEEE 1394b-2002 Beta-to-IEEE 1394b-2002 Beta, 2.0m

[View all parts in series 44610](#)
[2D Dimensions](#)
[View this page](#)

Status	INACTIVE / OBSOLETE
Access Level	Internet
Obsolete Date	2005-09
Replacement Products	None
Product Name	IEEE 1394
Single Ended	No
Connector to Connector	IEEE 1394b-2002 to IEEE 1394b-2002
Gender	Male - Male
Circuits / Positions	9
Cable Length	2.0m (6.56 ft)
Shielded	Yes
Pitch / Center Spacing	0.65mm (.026")
Offset	No
Contact	Copper (Cu) Alloy
Plating Contact	Gold (Au)
Under Plating	Nickel (Ni)
Plating Other	Solder Tails and Shell: Tin/Lead (Sn/Pb)
Wire Size [AWG]	26
Cable Type	Jacketed, PVC, Round
Color	Gray
Current-max [amps]	1.5A
Voltage-max [volts]	30V
Impedance	110 ohms
Waterproof / Dustproof	IP54, IP65, IP67, NEMA 6P
Product Specification	PS-45240-001
Packaging	Bag
Lock to Mating Part	Detent
Mates With	44605, 45240
Molex Series	44610
Last Changed Date	2005-06
Product Management	Guerrero, Jairo
Lab Office	MEX



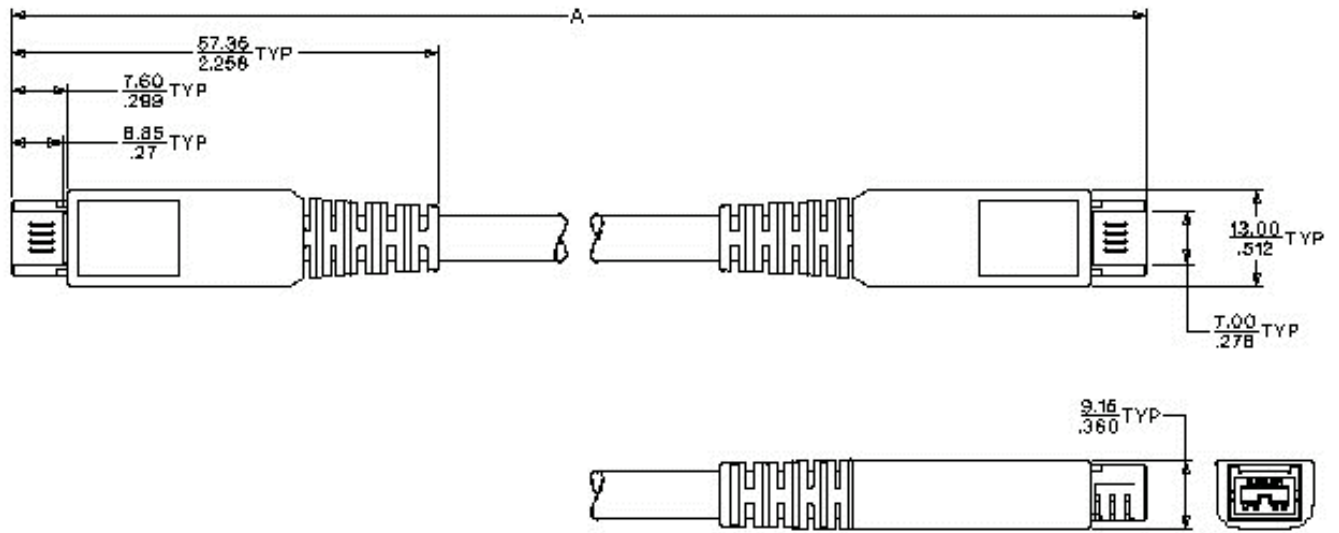
Features and Benefits

- Higher speed advantage of connectivity (S3200) to other beta devices
- Easily visible orientation and polarization
- Insulated and recessed plug shield
- Three-stage contact mating:
 - Cable ground
 - Power and signal ground
 - Signal pairs
- Rugged Gold-plated contacts to withstand 1000 cycles

2D D R A W I N G - For reference only. See technical [Drawing \(PDF\)](#) for design-in purposes.

Designed
in

Millimeters



© Copyright 2005 Molex Incorporated