

IEC appliance inlet C20, snap-in mounting, front side, solder/quick connect terminal



4793

C20



70 °C

**Description**

- Panel Mount:  
Snap-in, from front side
- Inlet, Pin temperature 70 °C, Protection class I
- Solder terminals or quick connect terminals
- Alternative: protection class II version [4794](#)

**Weblinks**

[Approvals](#), [RoHS](#), [CHINA-RoHS](#), [e-Store](#), [SCHURTER-Stock-Check](#), [Distributor-Stock-Check](#)

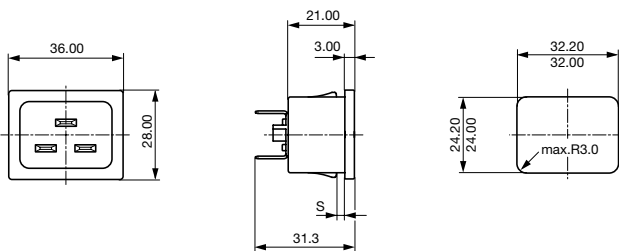
**Technical Data**

Ratings IEC	16 A / 250 VAC; 50 Hz	Appliance-Inlet /-Outlet	C20 acc. to IEC/EN 60320-1, UL 498, CSA C22.2 no. 42 (for cold condition) pin-temperature 70 °C, 16 A, Protection class I
Ratings UL/CSA	20 A / 250 VAC; 60 Hz		
Dielectric Strength	> 2 kVAC between L-N > 2 kVAC between L/N-PE (1 min/50 Hz)		
Allowable Operation Temp.	-25 °C to 70 °C		
Degree of Protection	from front side IP 30 acc. to IEC 60529		
Protection Class	Suitable for appliances with protection class I acc. to IEC 61140		
Terminal	Solder terminals or quick connect terminals		
Panel Thickness s	Snap-in: 1/1.2/1.5/2/2.5/3 mm		
Material: Housing	Thermoplastic, black, UL 94V-0		

**Dimensions**

4793

Length 36 mm



[Distributor-Stock-Check](#) | [SCHURTER-Stock-Check](#) | [e-Store](#)

## Variants

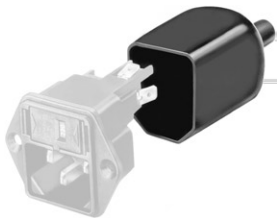
Panel mounting	Panel Thickness s [mm]	Terminal	Order Number
Snap-in	1	Quick connect terminals 6.3 x 0.8 mm	4793.3000
Snap-in	1.2	Quick connect terminals 6.3 x 0.8 mm	4793.8000
Snap-in	1.5	Quick connect terminals 6.3 x 0.8 mm	4793.4000
Snap-in	2	Quick connect terminals 6.3 x 0.8 mm	4793.5000
Snap-in	2.5	Quick connect terminals 6.3 x 0.8 mm	4793.6000
Snap-in	3	Quick connect terminals 6.3 x 0.8 mm	4793.7000
Snap-in	1	Solder terminals 3.8 x 0.8 mm	4793.3200
Snap-in	1.2	Solder terminals 3.8 x 0.8 mm	4793.8200
Snap-in	1.5	Solder terminals 3.8 x 0.8 mm	4793.4200
Snap-in	2	Solder terminals 3.8 x 0.8 mm	4793.5200
Snap-in	2.5	Solder terminals 3.8 x 0.8 mm	4793.6200
Snap-in	3	Solder terminals 3.8 x 0.8 mm	4793.7200

## Packaging unit

100 Pcs

## Accessory

## Description



Assorted Covers  
Rear Cover

0859.0047



Cord retaining kits  
Cord retaining strain relieve