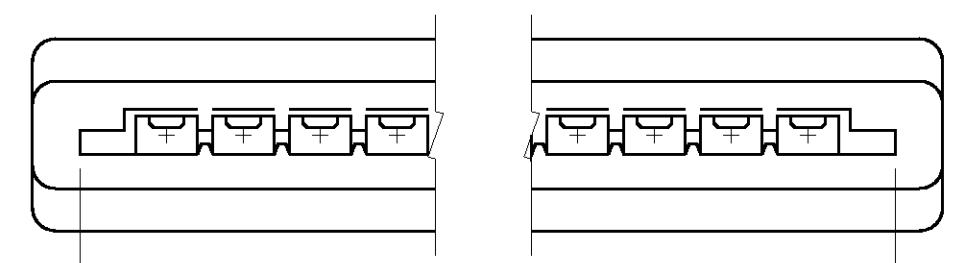


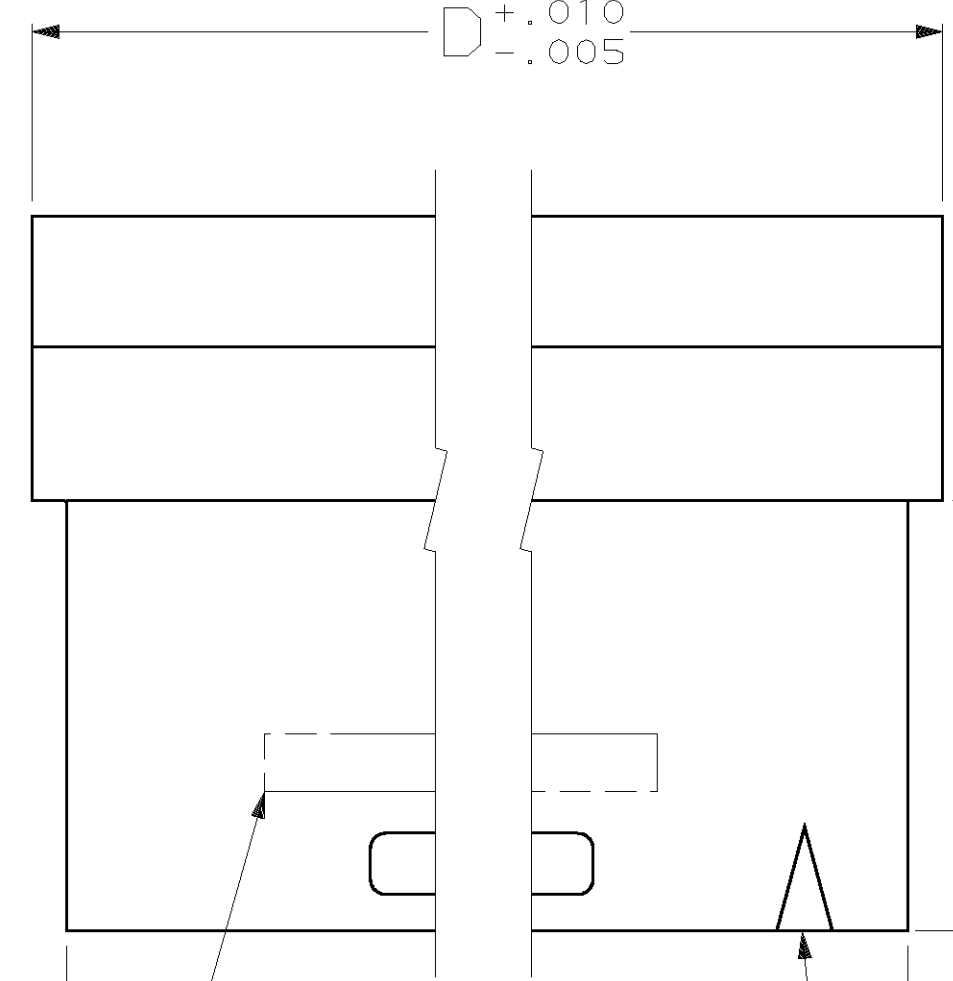
THIS DRAWING IS UNPUBLISHED. RELEASED FOR PUBLICATION
 © COPYRIGHT 19 BY AMP INCORPORATED. ALL INTERNATIONAL RIGHTS RESERVED.

LOC	DIST	P	F	ZONE	LTR	REVISIONS DESCRIPTION	DATE	APPD
AR	39					REDRAWN ON CAD PER ECN AR 2125	11/03/88	KIH
					P	REV PER ECN BD3686	2-27-90	-
					S	REV PER EC BD6679	03/05/93	GDM
					T	OBS -18, -30 PER EC 0020-0501-94	05/12/94	GM
					U	OBSOLETE -17, -31 PER EC 0020-918-95	02 FEB 95	DLK
					V	REVISED PER 0652-0107-99	05/01/99	SB



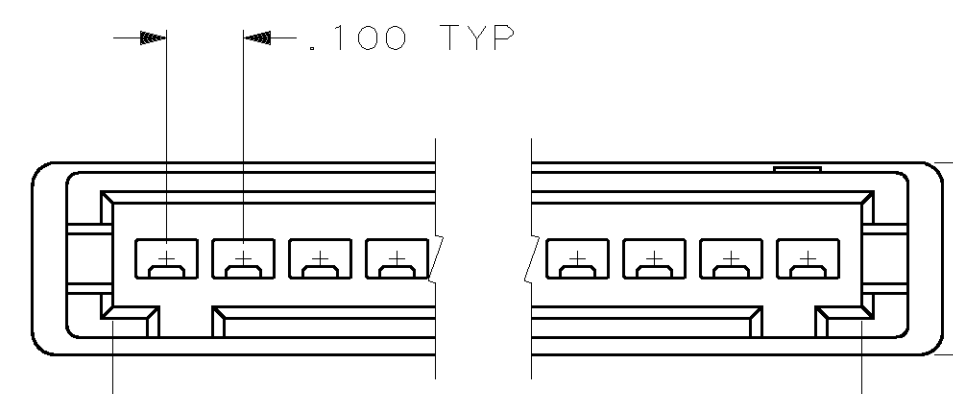
C +.010
-.005

D +.010
-.005



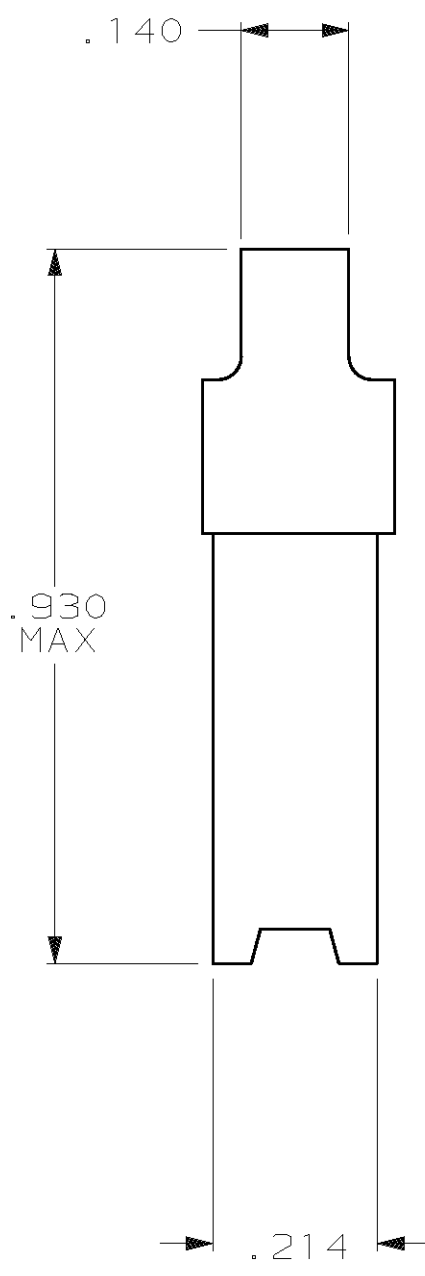
B +.010
-.005

A +.010
-.004

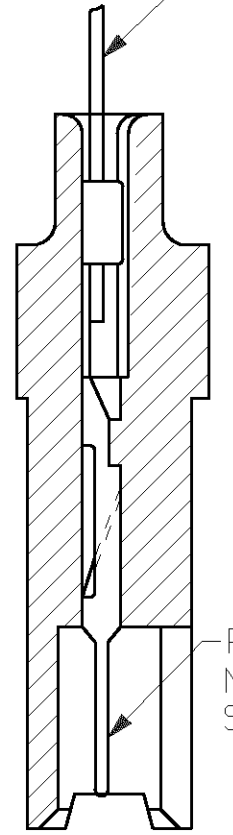


1. HOUSING WILL ACCOMMODATE FLEXIBLE FLAT CONDUCTOR CABLE
 .050 OR .062 WIDE CONDUCTORS ON .100 CENTERS AND/OR
 #32-22 AWG WIRE WITH INSULATION RANGE .025-.056 DIAMETER.

- ② AMP TRADEMARK MOLDED IN THIS AREA
- ③ INDICATES FIRST POSITION
- ④ OBSOLETE PART NUMBER



CABLE AND/OR WIRE SUPPLIED BY CUSTOMER



PIN CONTACTS MUST BE ORDERED SEPARATELY

CRIMPED CONTACT SHOWN FOR REFERENCE ONLY

3.750	3.626	3.660	3.540	35	④	3-485893-3
3.650	3.526	3.560	3.440	34	④	3-485893-2
3.550	3.426	3.460	3.340	33	④	3-485893-1
3.450	3.326	3.360	3.240	32	④	3-485893-0
3.350	3.226	3.260	3.140	31	④	2-485893-9
3.250	3.126	3.160	3.040	30	④	2-485893-8
3.150	3.026	3.060	2.940	29	④	2-485893-7
3.050	2.926	2.960	2.840	28	④	2-485893-6
2.950	2.826	2.860	2.740	27	④	2-485893-5
2.850	2.726	2.760	2.640	26	④	2-485893-4
2.750	2.626	2.660	2.540	25		2-485893-3
2.650	2.526	2.560	2.440	24	④	2-485893-2
2.550	2.426	2.460	2.340	23	④	2-485893-1
2.450	2.326	2.360	2.240	22	④	2-485893-0
2.350	2.226	2.260	1.140	21	④	1-485893-9
2.250	2.126	2.160	2.040	20		1-485893-8
2.150	2.026	2.060	1.940	19	④	1-485893-7
2.050	1.926	1.960	1.840	18		1-485893-6
1.950	1.826	1.860	1.740	17	④	1-485893-5
1.850	1.726	1.760	1.640	16		1-485893-4
1.750	1.626	1.660	1.540	15		1-485893-3
1.650	1.526	1.560	1.440	14		1-485893-2
1.550	1.426	1.460	1.340	13		1-485893-1
1.450	1.326	1.360	1.240	12		1-485893-0
1.350	1.226	1.260	1.140	11		485893-9
1.250	1.126	1.160	1.040	10		485893-8
1.150	1.026	1.060	.940	9		485893-7
1.050	.926	.960	.840	8		485893-6
.950	.826	.860	.740	7		485893-5
.850	.726	.760	.640	6		485893-4
.750	.626	.660	.540	5		485893-3
.650	.526	.560	.440	4		485893-2
.550	.426	.460	.340	3		485893-1

SUPERSEDED BY 494032-2

D	C	B	A	NO. OF POSN.	PART NUMBER

DO NOT SCALE PRINT. UNLESS SPECIFIED DIMENSIONS IN INCHES TOLERANCES ON: 2 PLC DEC ± - 3 PLC DEC ± .010 ANGLES ± -		DR 11/03/88 KATE HELM		AMP INCORPORATED Harrisburg, Pa. 17105	
MATERIAL THERMOPLASTIC COLOR: BLACK		CHK 3-6-89 D.ROCKER			
FINISH -		APPD 3-6-89 G.D.MILLER		NAME HOUSING, PIN, W/DETENT SLOTS, .100¢, FFC	
APPLICATION SPEC -		APPD 3-6-89 W.PARKER		DRAWING NO 485893	
WEIGHT -		PRODUCT SPEC -		SIZE C 00779	
		APPLICATION SPEC -		FSCM NO 00779	
		WEIGHT -		DRAWING NO 485893	
				SCALE 4:1	
				SHEET 1 OF 1	