

Distributed by:

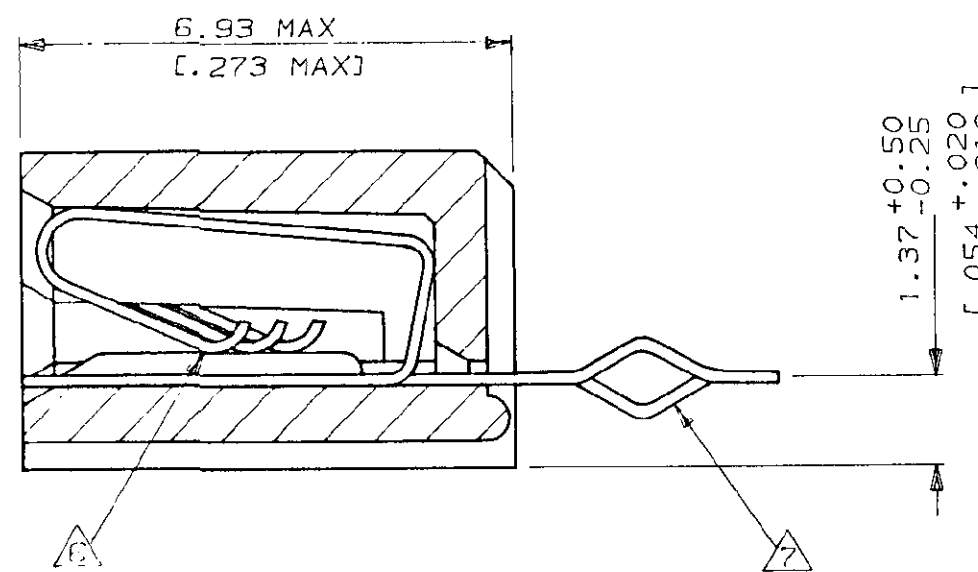
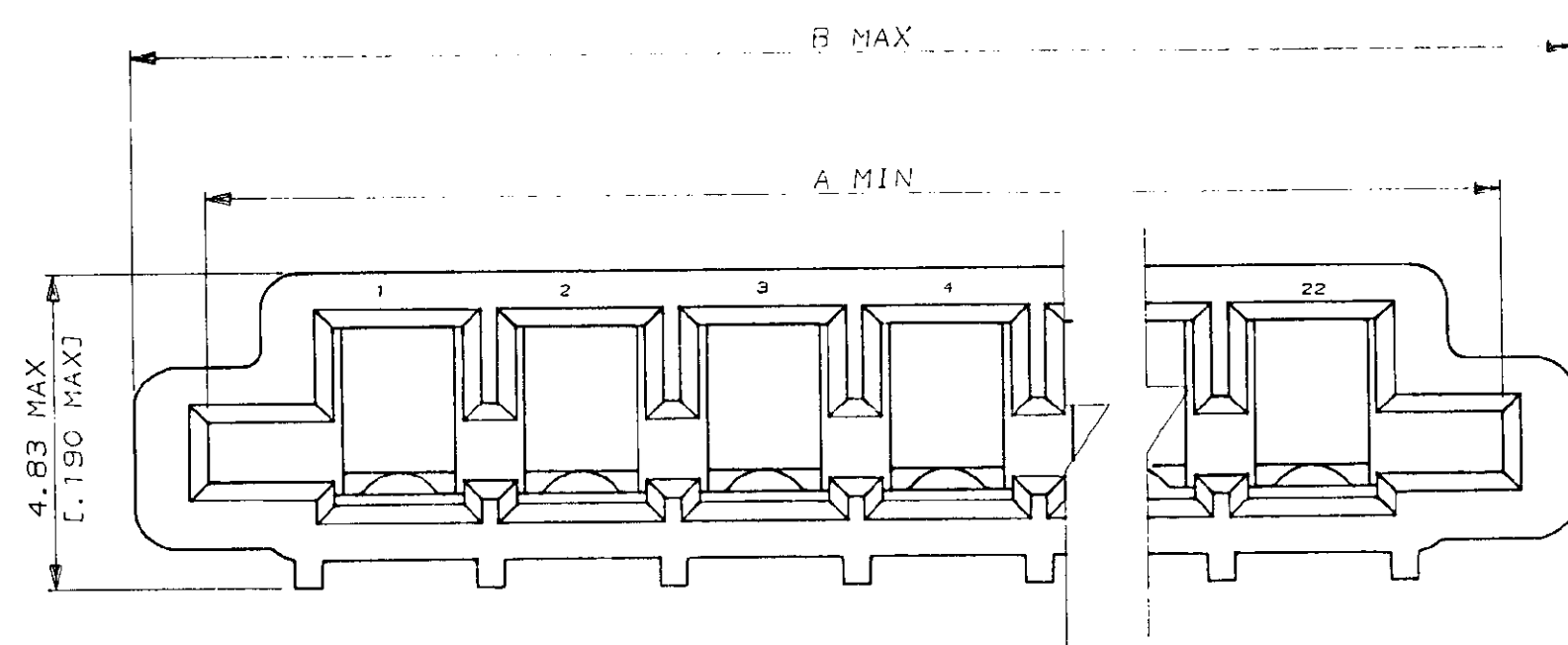
JAMECO[®]
ELECTRONICS

www.Jameco.com ♦ 1-800-831-4242

The content and copyrights of the attached
material are the property of its owner.

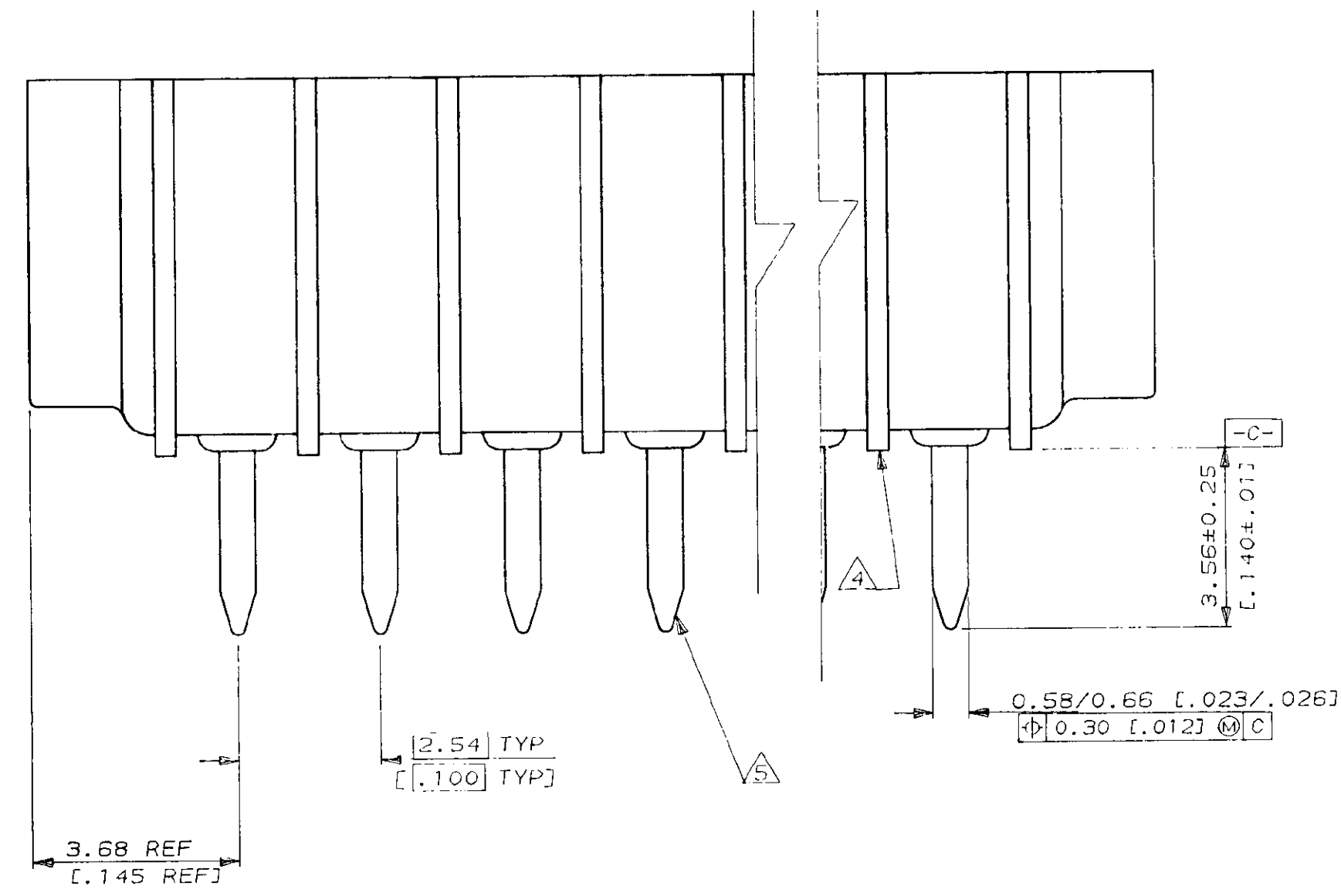
Jameco Part Number 849590

520315
METRIC
3-D ANGLE PROJECTION



NOTES

- 1 MATERIAL
HOUSING : GLASS REINFORCED POLYESTER
THERMOPLASTIC UL 94 V0 RATED, BLACK
CONTACT : PHOS BRONZE
- 2 CONTACTS, MATTE TIN PLATED
- 3 CONNECTOR WILL ACCEPT FLEXIBLE PRINTED CIRCUIT OR FLAT FLEXIBLE CABLE ON 2.54 [1.00] CENTERS IN A THICKNESS RANGE OF 0.127 TO 0.381 [0.005 TO .015] IN CONTACT AREA
- 4 STAND-OFFS PREVENT SOLVENT ENTRAPMENT
- 5 LEAD-IN ON PINS FOR EASE OF INSERTION INTO BOARD
- 6 SEQUENTIAL CONTACTS REDUCE CABLE INSERTION FORCE
- 7 ALTERNATING CONTACT FORM RETAINS CONNECTOR IN P.C. BOARD DURING SOLDER OPERATION
- 8 ACCEPTS CABLE OR CIRCUITRY WITH EXPOSED CONDUCTORS FACING TOWARD OR AWAY FROM THE BOARD SURFACE
- 9 REFER TO APPLICATION SPEC 114-2062



LEAD FREE					OBSOLETE	
7- 520315-2	60.78	[2.393]	58.62	[2.308]	22	2-520315-2
7- 520315-1	58.24	[2.293]	56.08	[2.208]	21	2-520315-1
7- 520315-0	55.70	[2.193]	53.54	[2.108]	20	2-520315-0
6- 520315-9	53.16	[2.093]	51.00	[2.008]	19	1-520315-9
6- 520315-8	50.62	[1.993]	48.46	[1.908]	18	1-520315-8
6- 520315-7	48.08	[1.893]	45.92	[1.808]	17	1-520315-7
6- 520315-6	45.54	[1.793]	43.38	[1.708]	16	1-520315-6
6- 520315-5	43.00	[1.693]	40.84	[1.608]	15	1-520315-5
6- 520315-4	40.46	[1.593]	38.30	[1.508]	14	1-520315-4
6- 520315-3	37.92	[1.493]	35.76	[1.408]	13	1-520315-3
6- 520315-2	35.38	[1.393]	33.22	[1.308]	12	1-520315-2
6- 520315-1	32.84	[1.293]	30.68	[1.208]	11	1-520315-1
6- 520315-0	30.30	[1.193]	28.14	[1.108]	10	1-520315-0
5- 520315-9	27.76	[1.093]	25.60	[1.008]	9	520315-9
5- 520315-8	25.22	[.993]	23.06	[.908]	8	520315-8
5- 520315-7	22.68	[.893]	20.52	[.808]	7	520315-7
5- 520315-6	20.14	[.793]	17.98	[.708]	6	520315-6
5- 520315-5	17.60	[.693]	15.44	[.608]	5	520315-5
5- 520315-4	15.06	[.593]	12.90	[.508]	4	520315-4
5- 520315-3	12.52	[.493]	10.36	[.408]	3	520315-3
5- 520315-2	9.98	[.393]	7.82	[.308]	2	520315-2
PART NO	B		A		POS	PART NO

Copyright ©1993 AMP MFG (S) PTE LTD. ALL RIGHTS RESERVED.				Copyright ©1993 AMP MFG (S) PTE LTD. ALL RIGHTS RESERVED.				AMP AMP MANUFACTURING (S) PRIVATE LIMITED							
U2 REVISED ECR-06-004332 PM KS 21FEB00				(WIRE RANGE) mm² (AWG -)				(INSULATION DIA.) mm				(NAME) TRIO-MATE			
U1 REVISED FR00-0002-05 SD PCH 22DEC04				(MATERIAL)				(FINISH)				VERTICAL CABLE ENTRY			
U REVISED FR00-0011-04 SD PCH 09FEB04				DR. A. SOH				DE. A. SOH				FOR 1.57 [0.062] THK P.C. BOARD			
T REVISED DY/EC/ 0799 LWY SL 12.7.93				CHK. HMLAM				APP. D. MARTIN				(GENERAL TOLERANCE) ±.38 [±.015]			
S REDRAWN DY/EC/0682 RT LHM 12.4.83				CHK. HMLAM				APP. D. MARTIN				(SCALE) 10:1			
LTR (REVISION RECORD) DR CHK DATE				CHK. HMLAM				APP. D. MARTIN				(SHEET) 1 OF 1			