

Inlet filter, ECO design, front- or rear side mounting, protection class I or II

Standard- or Medical-Filter



new



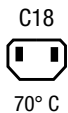
Front or rear mounting  
Protection class I



Rear mounting with  
integrated thread  
Protection class I



Snap-in mounting from front side  
Protection class II



### Description

- Panel Mount:  
Screw-on version from front or rear side, snap-in version from front side
- 2 Functions:  
Inlet, protection class I or II, Line filter in standard and medical version  
Quick connect terminals 6.3 x 0.8 mm

### Approvals

- VDE License Number: 40016382
- UL License Number: E72928

### Characteristics

- Compact high performance filter
- Optimal shielding due to completely closed filter case, unpotted
- Designed for standard and medical applications
- Suitable for assembly in metal plated plastic housings
- Qualified for use in equipment according IEC/EN 60950

### Other versions on request

- Snap-in for panel thickness >2mm to 3mm
- Solder terminals
- Class X1 capacitor for enhanced surge withstand voltage
- Medical version M80

### References

[General Product Information](#)

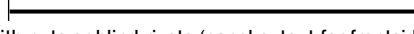
### Weblinks

[Approvals](#), [RoHS](#), [CHINA-RoHS](#), [e-Store](#), [SCHURTER-Stock-Check](#), [Distributor-Stock-Check](#)

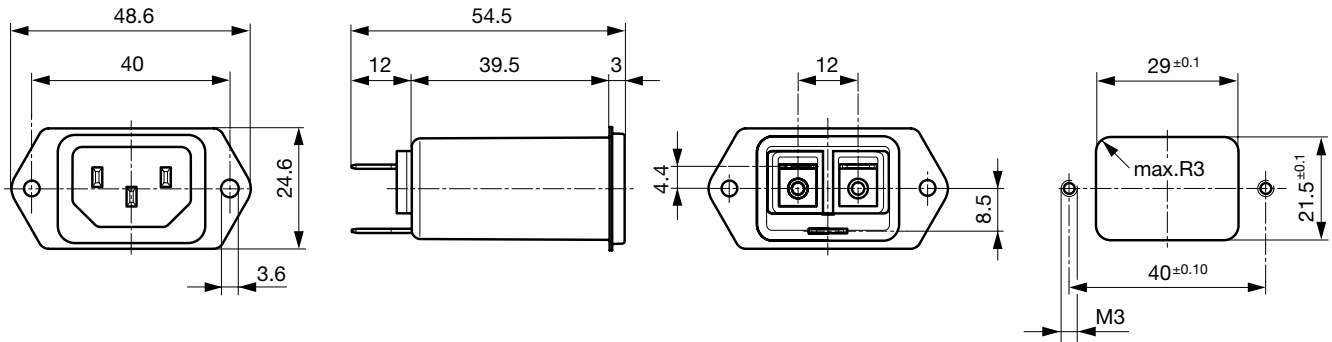
### Technical Data

Ratings IEC	1 - 10A @ Ta 40 °C / 250VAC; Hz 50	Appliance-Inlet /-Outlet	C14/C18 acc. to IEC/EN 60320-1, UL 498, CSA C22.2 no. 42 (for cold condition) pin-temperature 70 °C, 10A, Protection class I or II
Ratings UL/CSA	1 - 15A @ Ta 40 °C / 250VAC; 60Hz	Line Filter	Standard and Medical Version, IEC 60939, IEC 60601-1, UL 1283, UL 544, EN 133 200, CSA C22.2 no. 8 <a href="#">Technical details</a>
Leakage Current	standard < 0.5mA (250V / 60Hz) medical < 5 µA (250 V / 60 Hz)	MTBF	> 3'000'000h acc. to MIL-HB-217 F
Dielectric Strength	> 1.7kVDC between L-N > 2.7kVDC between L/N-PE Test voltage (2sec)		
Allowable Operation Temp.	-25 °C to 85 °C		
Climatic Category	25/085/21 acc. to IEC 60068-1		
Degree of Protection	from front side IP 40 acc. to IEC 60529		
Protection Class	Suitable for appliances with protection class I or II acc. to IEC 61140		
Terminal	Quick connect terminals 6.3 x 0.8 mm		
Panel Thickness s	Screw-on: max 8 mm Mounting screw torque max 0.5Nm Snap-in: 0.8mm to 2 mm (all steps with one variant)		
Material: Housing	Themoplast / steel tin-plated, black / metallic, UL 94V-0		

### Dimensions

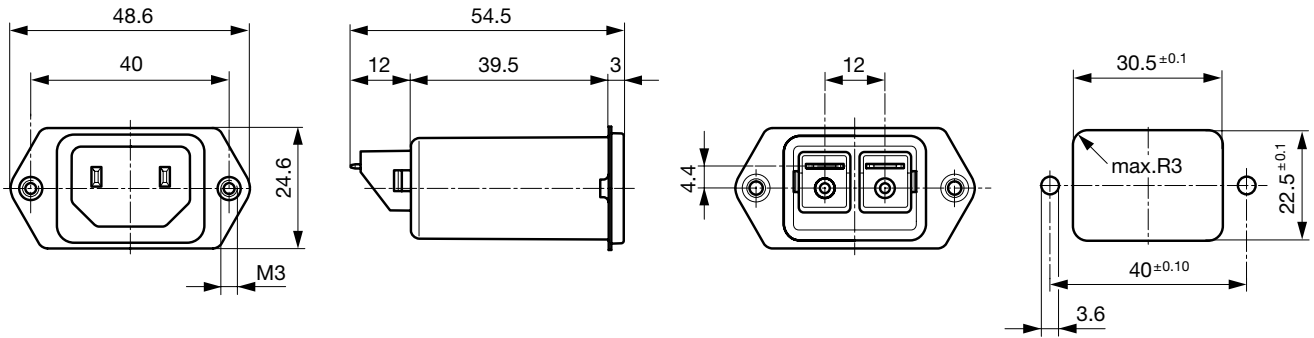
Length  54.5 mm

Front or rear side mounting for screws with nuts or blind rivets (panel cutout for frontside mounting)



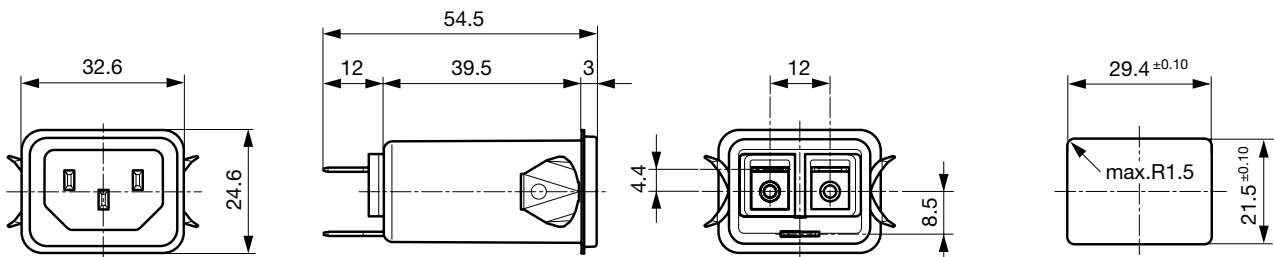
Dimensions for class I version also apply to class II

Rear side mounting with pre-formed, threaded holes for M3 screws (panel cutout for rear side mounting)



Dimensions for class II version also apply to class I

Snap-in mounting from front side



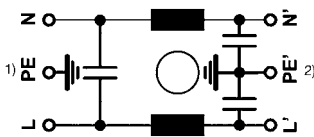
Dimensions for class I version also apply class II

**Technical Data of Filter-Components**

Rated Current [A]	Filter-Type	Inductances L [mH]	Capacitance CX [nF]	Capacitance CY [nF]	R [MΩ]
1	Standard Version	2 x 12	100	2.2	-
2	Standard Version	2 x 5.2	100	2.2	-
4	Standard Version	2 x 2	100	2.2	-
6	Standard Version	2 x 0.8	100	2.2	-
10	Standard Version	2 x 0.4	100	2.2	-
15	Standard Version	2 x 0.1	100	2.2	-
1	Bleed Resistor Version	2 x 12	100	2.2	1
2	Bleed Resistor Version	2 x 5.2	100	2.2	1
4	Bleed Resistor Version	2 x 2	100	2.2	1
6	Bleed Resistor Version	2 x 0.8	100	2.2	1
10	Bleed Resistor Version	2 x 0.4	100	2.2	1
15	Bleed Resistor Version	2 x 0.1	100	2.2	1
1	Medical Version (M5)	2 x 12	100	-	1
2	Medical Version (M5)	2 x 5.2	100	-	1
4	Medical Version (M5)	2 x 2	100	-	1
6	Medical Version (M5)	2 x 0.8	100	-	1
10	Medical Version (M5)	2 x 0.4	100	-	1
15	Medical Version (M5)	2 x 0.1	100	-	1

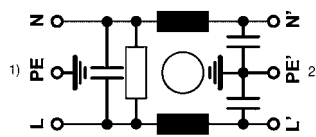
**Diagrams**

Standard version



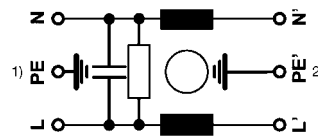
1) Line  
2) Load

Bleed resistor version



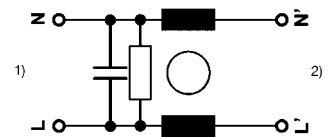
1) Line  
2) Load

Medical version M5



1) Line  
2) Load

Medical version M5, prot. class II



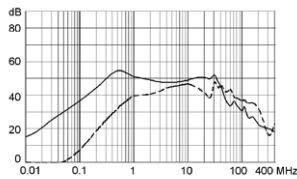
1) Line  
2) Load

**Attenuation Loss**

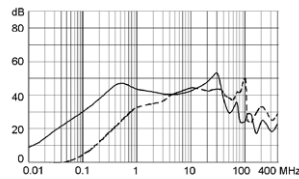
--- differential mode    \_\_\_\_ common mode

Standard version

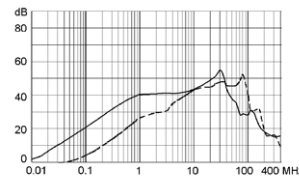
1 A



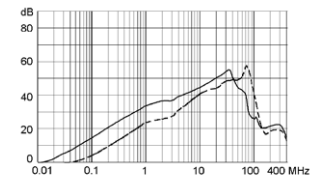
2 A



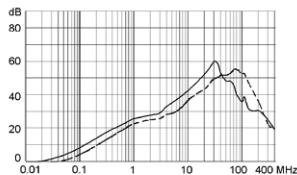
4 A



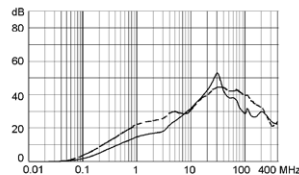
6 A



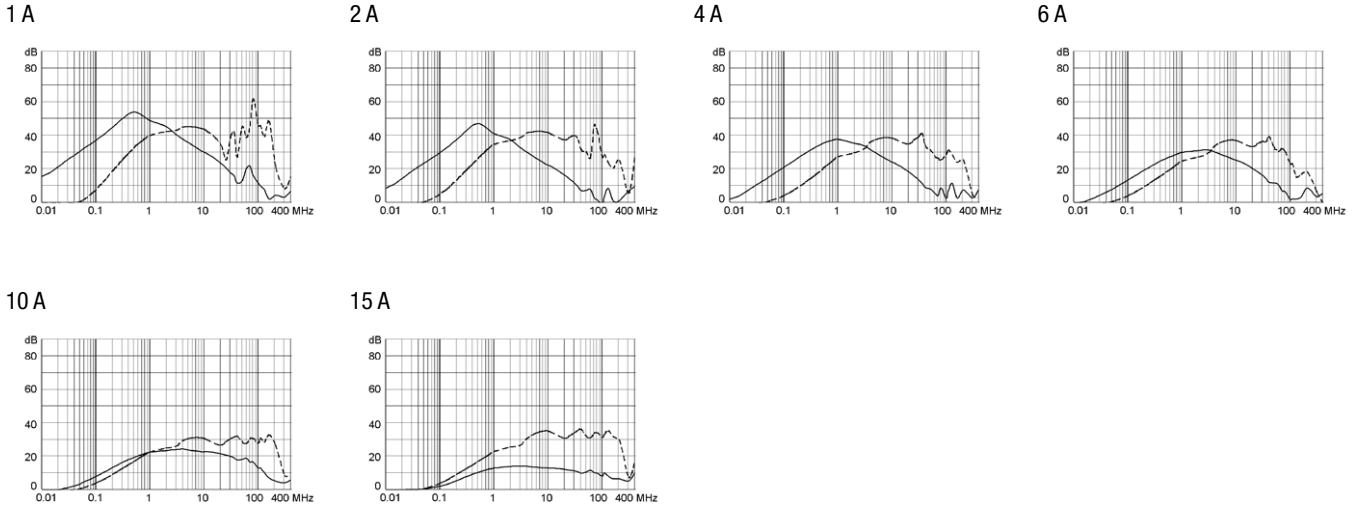
10 A



15 A



Medical version (M5)



Variants

[Distributor-Stock-Check](#) | [SCHURTER-Stock-Check](#) | [e-Store](#)

Rated Current [A]	Filter-Type	Panel mounting	Mounting side	Protection Class	Order Number
1	Standard Version	Screw-on/Rivet	Front-/Rear-Side	I	5120.0000.0
2	Standard Version	Screw-on/Rivet	Front-/Rear-Side	I	5120.0001.0
4	Standard Version	Screw-on/Rivet	Front-/Rear-Side	I	5120.0003.0
6	Standard Version	Screw-on/Rivet	Front-/Rear-Side	I	5120.0004.0
10	Standard Version	Screw-on/Rivet	Front-/Rear-Side	I	5120.0006.0
15	Standard Version	Screw-on/Rivet	Front-/Rear-Side	I	5120.0007.0
1	Standard Version	Screw-on	Rear-Side	I	5120.1000.0
2	Standard Version	Screw-on	Rear-Side	I	5120.1001.0
4	Standard Version	Screw-on	Rear-Side	I	5120.1003.0
6	Standard Version	Screw-on	Rear-Side	I	5120.1004.0
10	Standard Version	Screw-on	Rear-Side	I	5120.1006.0
15	Standard Version	Screw-on	Rear-Side	I	5120.1007.0
1	Bleed Resistor Version	Screw-on/Rivet	Front-/Rear-Side	I	5120.0200.0
2	Bleed Resistor Version	Screw-on/Rivet	Front-/Rear-Side	I	5120.0201.0
4	Bleed Resistor Version	Screw-on/Rivet	Front-/Rear-Side	I	5120.0203.0
6	Bleed Resistor Version	Screw-on/Rivet	Front-/Rear-Side	I	5120.0204.0
10	Bleed Resistor Version	Screw-on/Rivet	Front-/Rear-Side	I	5120.0206.0
15	Bleed Resistor Version	Screw-on/Rivet	Front-/Rear-Side	I	5120.0207.0
1	Bleed Resistor Version	Screw-on	Rear-Side	I	5120.1200.0
2	Bleed Resistor Version	Screw-on	Rear-Side	I	5120.1201.0
4	Bleed Resistor Version	Screw-on	Rear-Side	I	5120.1203.0
6	Bleed Resistor Version	Screw-on	Rear-Side	I	5120.1204.0
10	Bleed Resistor Version	Screw-on	Rear-Side	I	5120.1206.0
15	Bleed Resistor Version	Screw-on	Rear-Side	I	5120.1207.0
1	Medical Version (M5)	Screw-on/Rivet	Front-/Rear-Side	I	5120.0300.0
2	Medical Version (M5)	Screw-on/Rivet	Front-/Rear-Side	I	5120.0301.0
4	Medical Version (M5)	Screw-on/Rivet	Front-/Rear-Side	I	5120.0303.0
6	Medical Version (M5)	Screw-on/Rivet	Front-/Rear-Side	I	5120.0304.0
10	Medical Version (M5)	Screw-on/Rivet	Front-/Rear-Side	I	5120.0306.0
15	Medical Version (M5)	Screw-on/Rivet	Front-/Rear-Side	I	5120.0307.0
1	Medical Version (M5)	Screw-on	Rear-Side	I	5120.1300.0
2	Medical Version (M5)	Screw-on	Rear-Side	I	5120.1301.0
4	Medical Version (M5)	Screw-on	Rear-Side	I	5120.1303.0
6	Medical Version (M5)	Screw-on	Rear-Side	I	5120.1304.0
10	Medical Version (M5)	Screw-on	Rear-Side	I	5120.1306.0

Rated Current [A]	Filter-Type	Panel mounting	Mounting side	Protection Class	Order Number
15	Medical Version (M5)	Screw-on	Rear-Side	I	5120.1307.0
2	Medical Version (M5)	Screw-on/Rivet	Front-/Rear-Side	II	5120.0301.1
4	Medical Version (M5)	Screw-on/Rivet	Front-/Rear-Side	II	5120.0303.1
6	Medical Version (M5)	Screw-on/Rivet	Front-/Rear-Side	II	5120.0304.1
1	Medical Version (M5)	Screw-on	Rear-Side	II	5120.1300.1
2	Medical Version (M5)	Screw-on	Rear-Side	II	5120.1301.1
4	Medical Version (M5)	Screw-on	Rear-Side	II	5120.1303.1
6	Medical Version (M5)	Screw-on	Rear-Side	II	5120.1304.1
10	Medical Version (M5)	Screw-on	Rear-Side	II	5120.1306.1

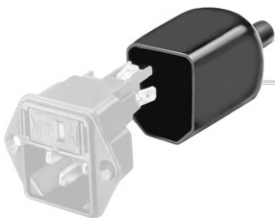
- 15 A version only according UL/CSA

- Type for screw-on mounting from rear side has pre-threaded holes for M3 screws

**Packaging unit** 10 Pcs

### Accessory

#### Description



Assorted Covers  
Rear Cover



Cord retaining kits  
Cord retaining strain relieve