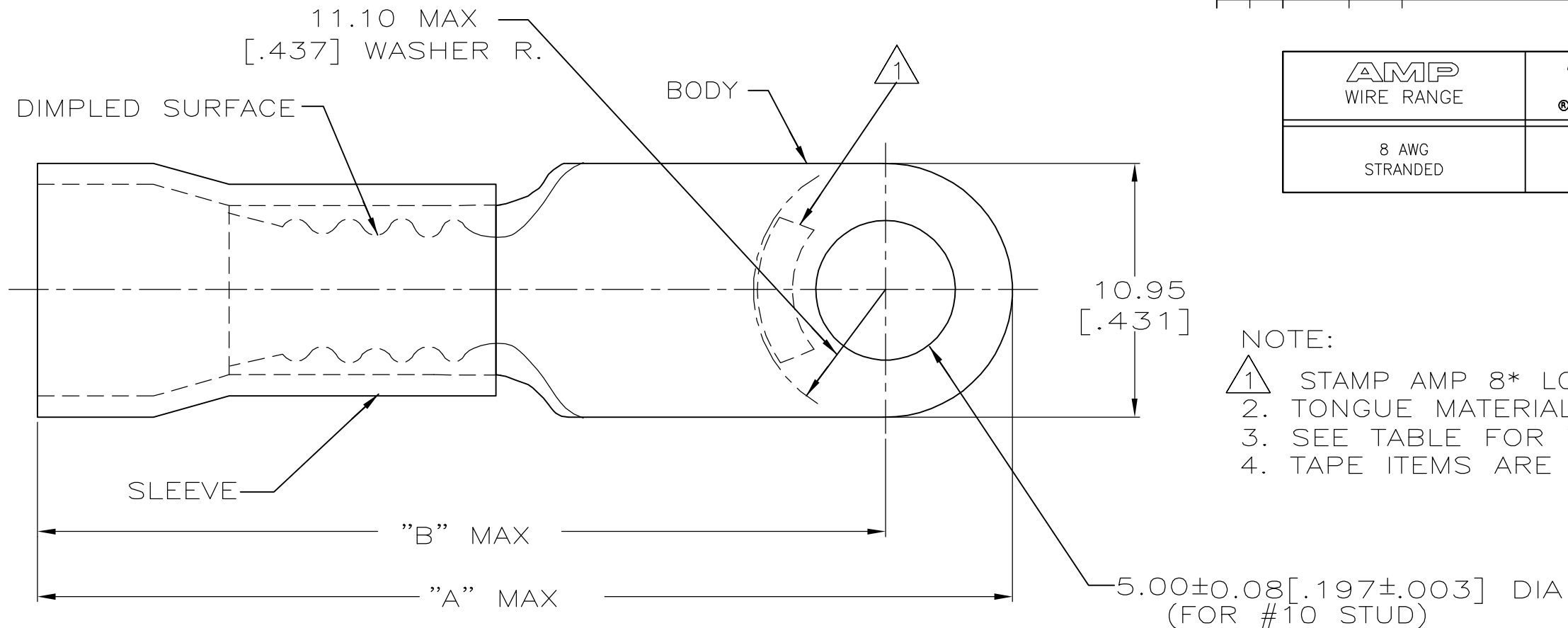


THIS DRAWING IS UNPUBLISHED. RELEASED FOR PUBLICATION, 19  
 © COPYRIGHT 19 BY AMP INCORPORATED. ALL INTERNATIONAL RIGHTS RESERVED.

|     |      |   |   |           |     |                       |         |       |
|-----|------|---|---|-----------|-----|-----------------------|---------|-------|
| LOC | DIST | P | F | REVISIONS |     |                       |         |       |
| G   | 14   |   |   | ZONE      | LTR | DESCRIPTION           | DATE    | APPD  |
|     |      |   |   |           | R1  | REV PER ECR 06-001832 | 24APR06 | JR TM |

|                |                |                  |
|----------------|----------------|------------------|
| AMP WIRE RANGE | FILE E13288    | LR7189 Certified |
| 8 AWG STRANDED | 8 AWG STRANDED | 8 AWG STRANDED   |



- NOTE:
1. STAMP AMP 8\* LOCATE APPROX AS SHOWN
  2. TONGUE MATERIAL THK 1.02±0.08 [.040±.003]
  3. SEE TABLE FOR WIRE INSULATION DIA MAX
  4. TAPE ITEMS ARE ON 30.48 [1.200] CENTERS

|                |                  |                  |     |          |         |
|----------------|------------------|------------------|-----|----------|---------|
| 9.91<br>[.390] | 33.99<br>[1.338] | 39.52<br>[1.556] | 100 | LOOSE PC | 52263-5 |
| 8.38<br>[.330] | 34.49<br>[1.358] | 40.03<br>[1.576] | 500 | ON TAPE  | 52263-4 |
| 9.14<br>[.360] | 33.99<br>[1.338] | 39.52<br>[1.556] |     |          | 52263-2 |
| 8.38<br>[.330] | 34.49<br>[1.358] | 40.03<br>[1.576] | 100 | LOOSE PC | 52263-1 |
| 9.14<br>[.360] | 33.99<br>[1.338] | 39.52<br>[1.556] |     |          | 52263   |

|  |  |   |  |                                   |   |
|--|--|---|--|-----------------------------------|---|
| AMP INCORPORATED<br>CUSTOMER SERVICE SYSTEMS                                     |  | MAX RECOMMENDED OPERATING TEMPERATURE:<br>90° C   | DO NOT SCALE PRINT. UNLESS SPECIFIED DIMENSIONS IN mm [INCHES] TOLERANCES ON:<br>2 PLC DEC ± 0.20[.008]<br>3 PLC DEC ± -<br>ANGLES ± - | DR 9-29-93<br>S.S. GOULDEN        | AMP<br>AMP Incorporated<br>Harrisburg, PA 17105-3608        |
| FOR ADDITIONAL PRODUCT INFORMATION OR COPIES OF DRAWINGS AND TECHNICAL DOCUMENTS | PRODUCT INFORMATION CENTER<br>1-800-522-6752 | VOLTAGE RATING:<br>600 V MAX  | MATERIAL<br>COPPER PER ASTM B-152<br>PVC, COLOR:RED  | CHK 9-29-93<br>R. HERSEY          |   |
| FOR APPLICATION TOOLING INFORMATION  | TOOLING ASSISTANCE CENTER<br>1-800-722-1111  | CIRCULAR MIL AREA:<br>6.64-10.54mm <sup>2</sup> [13,100-20,800] STRANDED  | FINISH<br>TIN PLATE PER ASTM B545  | APPD 9-29-93<br>B. BARE           | NAME<br>TERMINAL, RING TONGUE, PLASTI-GRIP, WIRE SIZE:8 AWG |
| FOR ORDER ENTRY  | 1-800-526-5142                               | THIS DRAWING IS A CONTROLLED DOCUMENT FOR AMP INCORPORATED. IT IS SUBJECT TO CHANGE AND THE CONTROLLING ENGINEERING ORGANIZATION SHOULD BE CONTACTED FOR THE LATEST REVISION. |  | APPD 9-29-93<br>M. ELLIS          | SIZE<br>B   |
|  |  |   |  | PRODUCT SPEC<br>NOT AVAILABLE     | CAGE CODE<br>00779  |
|  |  |   |  | APPLICATION SPEC<br>NOT AVAILABLE | DRAWING NO<br>C-52263                                       |
|  |  |   |  | WEIGHT -                          | SCALE<br>NTS  |
|  |  |   |  |                                   | SHEET<br>1 OF 1   |