

Distributed by:

JAMECO[®]
ELECTRONICS

www.Jameco.com ♦ 1-800-831-4242

The content and copyrights of the attached
material are the property of its owner.

Jameco Part Number 753889

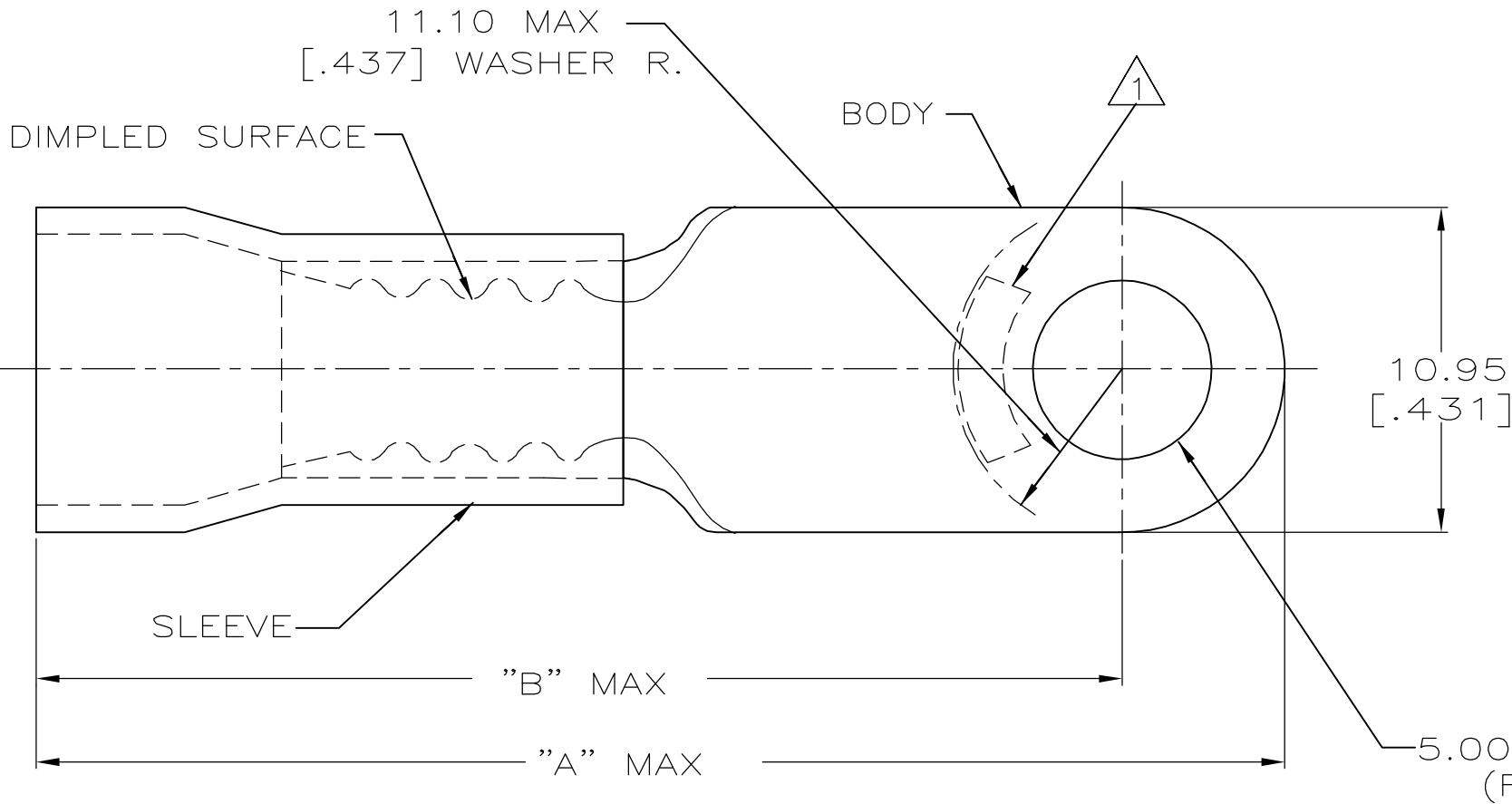
THIS DRAWING IS UNPUBLISHED.

RELEASED FOR PUBLICATION,19.

© COPYRIGHT 19

BY AMP INCORPORATED. ALL INTERNATIONAL RIGHTS RESERVED.

LOC	DIST	P	F	REVISIONS				
G	14			ZONE	LTR	DESCRIPTION	DATE	APPD
					R1	REV PER ECR 06-001832	24APR06	JR TM



NOTE:

1. STAMP AMP 8* LOCATE APPROX AS SHOWN
2. TONGUE MATERIAL THK 1.02±0.08 [.040±.003]
3. SEE TABLE FOR WIRE INSULATION DIA MAX
4. TAPE ITEMS ARE ON 30.48 [1.200] CENTERS

AMP WIRE RANGE	FILE E13288	LR7189 Certified
8 AWG STRANDED	8 AWG STRANDED	8 AWG STRANDED

9.91 [.390]	33.99 [1.338]	39.52 [1.556]	100	LOOSE PC	52263-5
8.38 [.330]	34.49 [1.358]	40.03 [1.576]	500	ON TAPE	52263-4
9.14 [.360]	33.99 [1.338]	39.52 [1.556]			52263-3
8.38 [.330]	34.49 [1.358]	40.03 [1.576]			52263-2
9.14 [.360]	33.99 [1.338]	39.52 [1.556]	100	LOOSE PC	52263-1
					52263

AMP INCORPORATED CUSTOMER SERVICE SYSTEMS			MAX RECOMMENDED OPERATING TEMPERATURE: 90° C	DO NOT SCALE PRINT. UNLESS SPECIFIED DIMENSIONS IN mm [INCHES] TOLERANCES ON: 2 PLC DEC ± 0.20 [.008] 3 PLC DEC ± - ANGLES ± - MATERIAL COPPER PER ASTM B-152 PVC, COLOR:RED FINISH TIN PLATE PER ASTM B545	WIRE INSULATION DIA	"B"	"A"	QTY	PACKAGE TYPE	PART NO
FOR ADDITIONAL PRODUCT INFORMATION OR COPIES OF DRAWINGS AND TECHNICAL DOCUMENTS	PRODUCT INFORMATION CENTER 1-800-522-6752		VOLTAGE RATING: 600 V MAX		DR 9-29-93 S.S. GOULDEN	AMP AMP Incorporated Harrisburg, PA 17105-3608				
FOR APPLICATION TOOLING INFORMATION	TOOLING ASSISTANCE CENTER 1-800-722-1111		CIRCULAR MIL AREA: 6.64-10.54mm² [13,100-20,800] STRANDED		CHK 9-29-93 R. HERSEY					
FOR ORDER ENTRY	1-800-526-5142	THIS DRAWING IS A CONTROLLED DOCUMENT FOR AMP INCORPORATED. IT IS SUBJECT TO CHANGE AND THE CONTROLLING ENGINEERING ORGANIZATION SHOULD BE CONTACTED FOR THE LATEST REVISION.			APPD 9-29-93 B. BARE	NAME TERMINAL, RING TONGUE, PLASTI-GRIP, WIRE SIZE:8 AWG				
					APPD 9-29-93 M. ELLIS					
					PRODUCT SPEC NOT AVAILABLE	SIZE B	CAGE CODE 00779	DRAWING NO C-52263		
					APPLICATION SPEC NOT AVAILABLE	SCALE NTS		SHEET 1 OF 1		
					WEIGHT -					