

Inlet filter, modular assembling

Standard- or Medical-Filter



5411.XX5X.XXX  
Appliance inlet  
Fuseholder  
Line filter



5431.X05X.XXX  
Appliance inlet  
Appliance outlet  
Switch  
Line filter

C14



70° C



### Description

- Panel Mount:  
Snap-In Version from front side
- 2 - 5 Functions:  
Inlet Protection class I, Outlet, Line switch 2-pole, Fuseholder for fuse-links 5 x 20 mm 1- or 2-pole, Line filter in standard and medical version
- Solder terminals 3.5 x 0.8 mm or quick connect terminals 6.3 x 0.8 mm
- Alternative: version without line filter [Felcom 64](#)

### Approvals

- VDE License Number: 101307
- UL License Number: E72928

### Characteristics

- Modular component selection
- Individual components soldered on a printed circuit board
- Plug removal necessary for fuse-link replacement  
Fuse drawer meets requirements of medical standard IEC/EN 60601-1  
The fuseholder is accessible from the equipment front
- Technical data of filter-components see blockfilter type 5500
- Fully insulated from the rear
- Qualified for use in equipment according IEC/EN 60950

### Other versions on request

- Line switch with other rocker marking

### References

[General Product Information](#)

### Weblinks

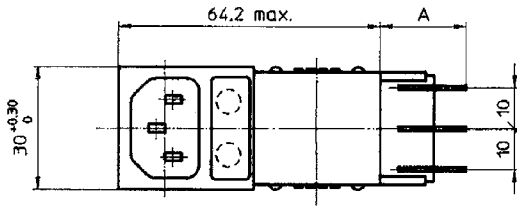
[Approvals](#), [RoHS](#), [CHINA-RoHS](#), [e-Store](#), [SCHURTER-Stock-Check](#), [Distributor-Stock-Check](#)

### Technical Data

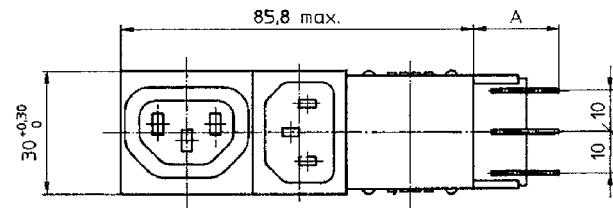
Ratings IEC	1 - 6A @ Ta 40 °C / 250VAC; Hz 50
Ratings UL/CSA	1 - 6A @ Ta 40 °C / 125VAC; 60Hz
Leakage Current	standard < 0.5mA (250V / 60Hz) medical < 5 µA (250V / 60 Hz)
Dielectric Strength	> 1.7 kVDC between L-N > 2.7 kVDC between L/N-PE Test voltage (2 sec)
Allowable Operation Temp.	-25 °C to 85 °C
Climatic Category	25/085/21 acc. to IEC 60068-1
Degree of Protection	from front side IP 40 acc. to IEC 60529
Protection Class	Suitable for appliances with protection class I acc. to IEC 61140
Terminal	Solder terminals 3.5 x 0.8 mm or quick connect terminals 6.3 x 0.8 mm
Panel Thickness s	Snap-in: 1/1.2/1.5/2/2.5/3 mm
Material: Housing	Thermoplastic, black, UL 94V-0

Appliance-Inlet /-Outlet	C14 acc. to IEC/EN 60320-1, F acc. to IEC/EN 60320-2-2, UL 498, CSA C22.2 no. 42 (for cold condition) pin-temperature 70 °C, 10A, Protection class I
Fuseholder	1 or 2 pole, Shocksafe category PC2 acc. to IEC 60127-6, for fuse-links 5 x 20mm
Rated Power Acceptance @ Ta 23 °C	5 x 20: 2W (1 pole)/ 1.6W (2-pole) per pole
Power Acceptance @ Ta > 23°C	Admissible power acceptance at higher ambient temperature see derating curves
Line Switch	Rocker switch 2-pole, non-illuminated, acc. to IEC 61058-1 <a href="#">Technical details</a>
Line Filter	Standard Version, IEC 60939, IEC 60601-1, UL 1283, UL 544, EN 133 200, CSA C22.2 no. 8 <a href="#">Technical details</a>
MTBF	> 1'400'000h acc. to MIL-HB-217 F

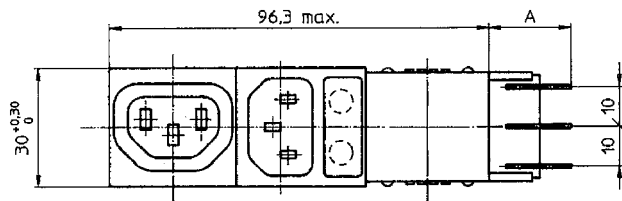
## Dimensions



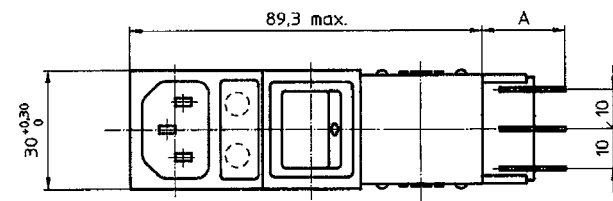
Variants 5411.XX5X.XXX  
Mounting Ø: 63+0,2 x 27.6+0,2



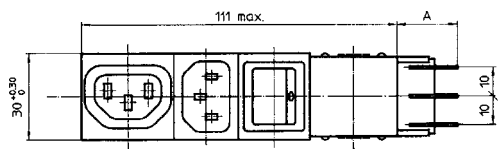
Variants 5421.X05X.XXX  
Mounting Ø: 85.9+0,2 x 27.6+0,2



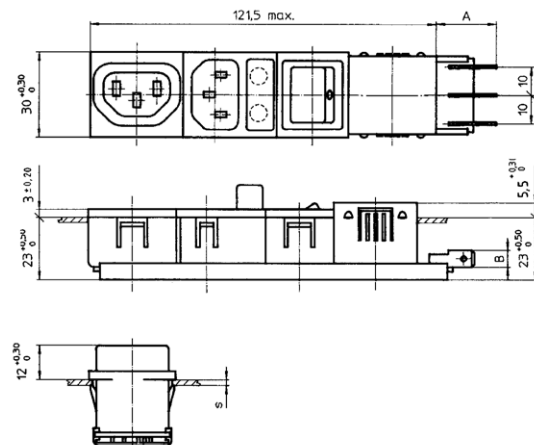
Variants 5423.XX5X.XXX  
Mounting Ø: 96.4+0,2 x 27.6+0,2



Variants 5424.XX5X.XXX  
Mounting Ø: 87.9+0,2 x 27.6+0,2



Variants 5431.X05X.XXX  
Mounting Ø: 111.1+0,2 x 27.6+0,2



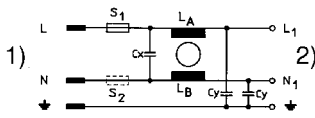
Variants 5432.XX5X.XXX  
Mounting Ø: 121.6+0,2 x 27.6+0,2

## Technical Data of Filter-Components

Rated Current [A]	Filter-Type	Inductances L [mH]	Capacitance CX [nF]	Capacitance CY [nF]	R [MΩ]
2	Standard Version	2 x 4	47	2.2	-
4	Standard Version	2 x 1.6	47	2.2	-
6	Standard Version	2 x 0.7	47	2.2	-
6	Standard Version	2 x 11	47	2.2	-
2	Medical Version (M5)	2 x 4	47	-	1
4	Medical Version (M5)	2 x 1.6	47	-	1
6	Medical Version (M5)	2 x 0.7	47	-	1
6	Medical Version (M5)	2 x 11	47	-	1

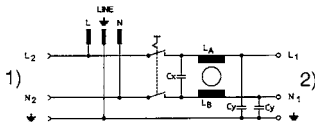
## Diagrams

5411



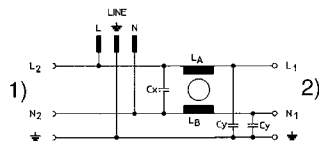
1) Line  
2) Load 1

5431



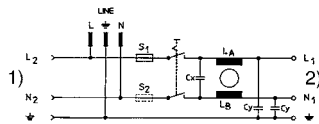
1) Load 2  
2) Load 1

5421



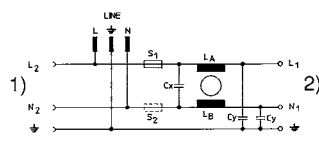
1) Load 2  
2) Load 1

5432



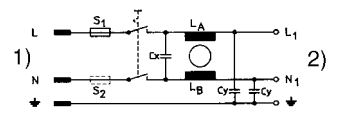
1) Load 2  
2) Load 1

5423



1) Load 2  
2) Load 1

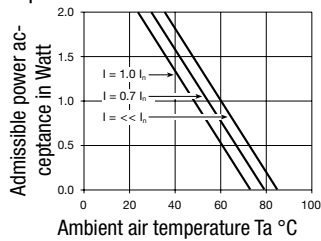
5424



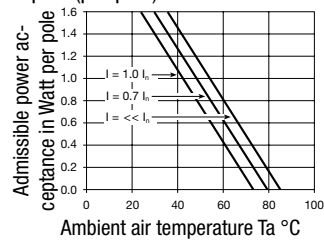
1) Line  
2) Load 1

## Derating Curves

1-pole



2-pole (per pole)

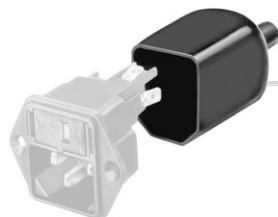


Packaging unit

10 Pcs

## Accessory

Description



Assorted Covers  
Rear Cover



Cord retaining kits  
Cord retaining strain reliefs

## Ordering instructions

54 XX.X X X XX.XX X

### Type of line filter

- 1 = standard
- 3 = medical

### "Snap-in" panel thickness

- 10 = 1,0 mm
- 12 = 1,2 mm
- 15 = 1,5 mm
- 20 = 2,0 mm
- 25 = 2,5 mm
- 30 = 3,0 mm

### Connection

- 51 = solder terminals 3,5 x 0,8 mm
- 53 = quick connect terminals 6,3 x 0,8 mm

### Fuseholder 5 x 20 mm

- 0 = without fuseholder
- 1 = 1-pole
- 2 = 2-pole

### Line filter

- 1 = 1 Amp.
- 2 = 2 Amp.
- 4 = 4 Amp.
- 6 = 6 Amp.

### Module combination

- 11 = Appliance inlet, fuseholder
- 21 = Appliance inlet, appliance outlet
- 23 = Appliance inlet, fuseholder, appliance outlet
- 24 = Appliance inlet, fuseholder, switch
- 31 = Appliance inlet, appliance outlet, switch
- 32 = Appliance inlet, fuseholder, appliance outlet, switch

### Base model