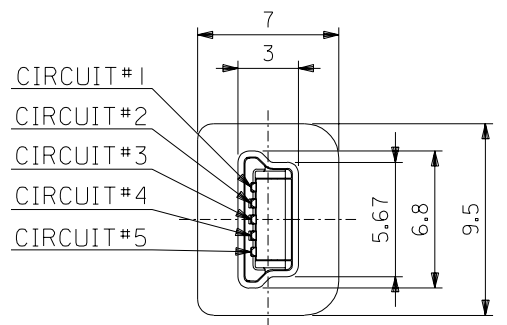
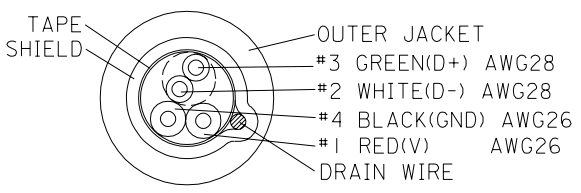


CIRCUIT DIAGRAM



VIEW B (SCALE:4-1)

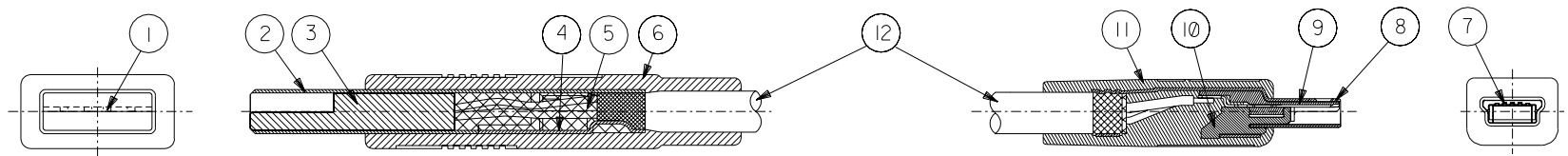


CABLE CONSTRUCTION

DO NOT SCALE DRAWING

1000±50 CABLE LENGTH (L)		59204-9401 MATERIAL NO.	
MODEL No.:59204-94** DIMENSIONS:			
SCALE 1-1	DESIGN UNITS <input checked="" type="checkbox"/> mm <input type="checkbox"/> INCH	DIMENSIONS: <input type="checkbox"/> mm <input type="checkbox"/> INCH <input checked="" type="checkbox"/> mm ONLY	SHT 1 OF 2 REV B
GENERAL TOLERANCES: (UNLESS SPECIFIED) 一般公差		TITLE: USB SERIES MINI-B PLUG HARNESS TYPE 2	
10 UNDER 未滿 ±0.2	10 OVER 30 UNDER 未滿 ±0.25	DRAWN BY & DATE: <i>R. Takahashi</i> 99/06/24	
30 OVER 以上 ±0.3	ANGLE 角度 ±3°	CHECKED BY & DATE: <i>H. Sasaki</i> 99/06/24	
MATERIAL 材料 SEE CONSTRUCTION		APPROVED BY & DATE: <i>H. Sasaki</i> 99/06/24	
FINISH 仕上り SEE CONSTRUCTION		MOLEX INCORPORATED	
WIRE RANGE 適用線径範囲 #		CAD FILENAME SD-59204-158.S01	MATERIAL NO. SEE CHART
INS. RANGE 被覆外径 #		DRAWING NO. SD-59204-158	SHEET NO. 1 OF 2
THIS DRAWING CONTAINS INFORMATION THAT IS PROPRIETARY TO MOLEX INCORPORATED AND SHOULD NOT BE USED WITHOUT WRITTEN PERMISSION.			SIZE B

DO NOT SCALE DRAWING



USB A

USB MINI-B

— 部品構成 —  
PARTS CONSTRUCTION

①	部品名 PARTS NAME	材質 MATERIALS	処理 FINISH	⑦	部品名 PARTS NAME	材質 MATERIALS	処理 FINISH
	USB PIN	銅合金: t0.25 COPPER ALLOY: t0.25	接点部: 金 下部: ニッケル 接続部: 半田メッキ CONTACT AREA GOLD UNDER PLATING NICKEL ATTACH AREA SnPb		MINI-B TERMINAL	銅合金: t0.25 COPPER ALLOY: t0.25	接点部: 金 下部: ニッケル 接続部: 半田メッキ CONTACT AREA GOLD UNDER PLATING NICKEL ATTACH AREA SnPb
②	USB A CASE-2	鋼: t0.3 STEEL: 0.3	ニッケルメッキ NICKEL PLATING	⑧	MINI-B SHIELD CASE	鋼: t0.3 STEEL: 0.3	ニッケルメッキ NICKEL PLATING
③	USB A CORE	POLYBUTYLENE TEREPHTHALATE GLASS FILLED, UL94V-0 COLOR: WHITE	—	⑨	MINI-B HS'G	POLYIMIDE GLASS FILLED, UL94V-0 COLOR: BLACK	—
④	USB A CASE-1	鋼: t0.3 STEEL: 0.3	ニッケルメッキ NICKEL PLATING	⑩	MINI-B HS'G COVER	POLYBUTYLENE TEREPHTHALATE GLASS FILLED, UL94V-0 COLOR: BLACK	—
⑤	USB A PRE-MOLD	POLYVINYL CHLORIDE, UL94V-0 COLOR: GRAY	—	⑪	MINI-B OVER-MOLD	POLYVINYL CHLORIDE, UL94V-0 COLOR: GRAY	—
⑥	USB A OVER-MOLD	POLYVINYL CHLORIDE, UL94V-0 COLOR: GRAY	—	⑫	CABLE	— COLOR: GRAY	—

DO NOT SCALE DRAWING

① 64 NO. DRWN: CH'K: APPR: ② 63 NO. DRWN: CH'K: APPR: ③ 62 NO. DRWN: CH'K: APPR: ④ 61 NO. DRWN: CH'K: APPR: ⑤ 60 NO. DRWN: CH'K: APPR:	⑥ 59 NO. DRWN: CH'K: APPR:	⑦ 58 NO. DRWN: CH'K: APPR:	⑧ 57 NO. DRWN: CH'K: APPR:	⑨ 56 NO. DRWN: CH'K: APPR:	⑩ 55 NO. DRWN: CH'K: APPR:	⑪ 54 NO. DRWN: CH'K: APPR:	⑫ 53 NO. DRWN: CH'K: APPR:	⑬ 52 NO. DRWN: CH'K: APPR:	⑭ 51 NO. DRWN: CH'K: APPR:	⑮ 50 NO. DRWN: CH'K: APPR:	⑯ 49 NO. DRWN: CH'K: APPR:	⑰ 48 NO. DRWN: CH'K: APPR:	⑱ 47 NO. DRWN: CH'K: APPR:	⑲ 46 NO. DRWN: CH'K: APPR:	⑳ 45 NO. DRWN: CH'K: APPR:	㉑ 44 NO. DRWN: CH'K: APPR:	㉒ 43 NO. DRWN: CH'K: APPR:	㉓ 42 NO. DRWN: CH'K: APPR:	㉔ 41 NO. DRWN: CH'K: APPR:	㉕ 40 NO. DRWN: CH'K: APPR:	㉖ 39 NO. DRWN: CH'K: APPR:	㉗ 38 NO. DRWN: CH'K: APPR:	㉘ 37 NO. DRWN: CH'K: APPR:	㉙ 36 NO. DRWN: CH'K: APPR:	㉚ 35 NO. DRWN: CH'K: APPR:	㉛ 34 NO. DRWN: CH'K: APPR:	㉜ 33 NO. DRWN: CH'K: APPR:	㉝ 32 NO. DRWN: CH'K: APPR:	㉞ 31 NO. DRWN: CH'K: APPR:	㉟ 30 NO. DRWN: CH'K: APPR:	㊱ 29 NO. DRWN: CH'K: APPR:	㊲ 28 NO. DRWN: CH'K: APPR:	㊳ 27 NO. DRWN: CH'K: APPR:	㊴ 26 NO. DRWN: CH'K: APPR:	㊵ 25 NO. DRWN: CH'K: APPR:	㊶ 24 NO. DRWN: CH'K: APPR:	㊷ 23 NO. DRWN: CH'K: APPR:	㊸ 22 NO. DRWN: CH'K: APPR:	㊹ 21 NO. DRWN: CH'K: APPR:	㊺ 20 NO. DRWN: CH'K: APPR:	㊻ 19 NO. DRWN: CH'K: APPR:	㊼ 18 NO. DRWN: CH'K: APPR:	㊽ 17 NO. DRWN: CH'K: APPR:	㊾ 16 NO. DRWN: CH'K: APPR:	㊿ 15 NO. DRWN: CH'K: APPR:	14 NO. DRWN: CH'K: APPR:	13 NO. DRWN: CH'K: APPR:	12 NO. DRWN: CH'K: APPR:	11 NO. DRWN: CH'K: APPR:	10 NO. DRWN: CH'K: APPR:	9 NO. DRWN: CH'K: APPR:	8 NO. DRWN: CH'K: APPR:	7 NO. DRWN: CH'K: APPR:	6 NO. DRWN: CH'K: APPR:	5 NO. DRWN: CH'K: APPR:	4 NO. DRWN: CH'K: APPR:	3 NO. DRWN: CH'K: APPR:	2 NO. DRWN: CH'K: APPR:	1 NO. DRWN: CH'K: APPR:
MATERIAL 材料 SEE CONSTRUCTION		FINISH 仕上げ SEE CONSTRUCTION		WIRE RANGE 適用電線範囲 —		INS. RANGE 被覆外径 —		GENERAL TOLERANCES: (UNLESS SPECIFIED) 一般公差 10 UNDER 未満 ±0.2 10 OVER 30 UNDER 未満 ±0.25 30 OVER 以上 ±0.3		SCALE 2 - 1 DESIGN UNITS 一般公差 <input checked="" type="checkbox"/> mm <input type="checkbox"/> INCH		DRAWN BY & DATE <i>R. Takahashi</i> 99/06/24 CHECKED BY & DATE <i>H. Sawa</i> 99/06/24 APPROVED BY & DATE <i>H. Sawa</i> 99/06/24		TITLE: USB SERIES MINI-B PLUG HARNESS TYPE 2		DIMENSIONS: <input type="checkbox"/> mm <input type="checkbox"/> INCH <input checked="" type="checkbox"/> mm ONLY <input type="checkbox"/> mm <input type="checkbox"/> mm		SHT 2 REV 2 OTHERWISE ON CAD ONLY		MOLEX INCORPORATED		CAD FILENAME SD-59204-158.S02 MATERIAL NO. SEE CHART DRAWING NO. SD-59204-158 SHEET NO. 2		THIS DRAWING CONTAINS INFORMATION THAT IS PROPRIETARY TO MOLEX INCORPORATED AND SHOULD NOT BE USED WITHOUT WRITTEN PERMISSION.		SIZE B																																	