

## 1732 Portable C-Frame Punch Drivers



- Fast, one-shot punching, no predrilling of pilot holes.
- Use with 1/2" through 4" conduit size and other round sizes only.
- Use with Greenlee standard round punches and dies (optional).
- Throat measures 8" (203 mm) deep.

Cat. No.	UPC No.	Description	Weight	
			lbs.	kg.
1732	27361	Driver with ram, 3/8", 3/4" and 1-1/8" punch and die adapters	59	27
1732H755	27362	Same as 1732 with 755 Hydraulic hand pump	79	36

### SPECIFICATIONS

#### Capacity:

Up through 10 gauge (3.0 mm) mild steel with Greenlee Standard punches and dies;  
 1/2" through 4" conduit and 15.2 through 115.4 mm.

Cat. No.	UPC No.	Description	Kit Cat./UPC No.	
			1732/ 27361	1732H755/ 27362
		C-Frame with Ram	✓	✓
11791	11791	Die Adapter-3/8"ø (9.5 mm)	✓	✓
11790	11790	Die Adapter-3/4"ø (19.0 mm)	✓	✓
11789	11789	Die Adapter-1-1/8"ø (28.6 mm)	✓	✓
13266	13266	Punch Adapter-3/8"ø x 1/2" (9.5 mmø)	✓	✓
13267	13267	Punch Adapter-3/4"ø x 1" (19.0 mmø)	✓	✓
13268	13268	Punch Adapter-1-1/8"ø (28.6 mmø)	✓	✓
27335	27335	Metal Case	✓	✓
755	15677	Hydraulic Hand Pump		✓
11289	11289	Hydraulic Hose-3/8" x 6' (9.5 mm x 1.8 m)		✓
50642	50642	Nut-3/4"-10 (19.0 mm)	✓	✓

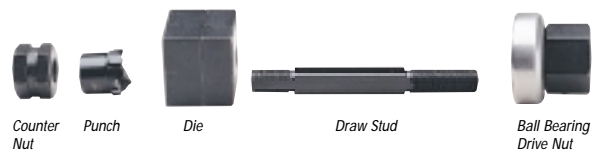
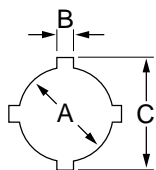
## Special Shape Punches

For information on custom punches and dies, see page 28.

- Use to punch holes for switches and instruments in enclosures.
- Punch up to 10 gauge (3.5 mm) mild steel.
- Die alignment marks for accurate alignment.
- Burr-free holes.

## Oiltight Punches with Notches

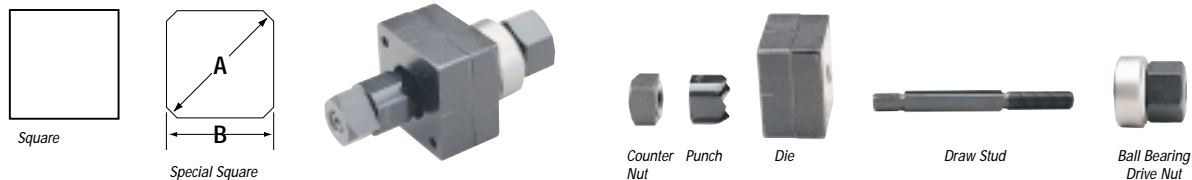
Other oiltight sizes without notches available in standard, Slug-Buster® and Slug Splitter® designs.



Hole Size						Maximum Capacity Mild Steel	Operation Type	Cat./UPC No.						Minimum Pilot Hole Ø		Weight	Optional Adapter for Hydraulic Drivers	
Inch			mm					GA	mm	Punch Unit (Includes Punch Die and Draw Stud)	Punch	Die	Draw Stud	BB Drive Nut	Counter Nut			Inch
A	B	C	A	B	C													
.875	.125	1.000	22.5	3.2	25.4	14	2.0	60238	60239	60250	60117	60165	60258	.625	15.9	2.1	.95	60167ø
1.210	.190	1.380	30.5	4.8	36.0	10	3.5	60242	60243	60249	60117	60165	60258	.625	15.9	2.7	1.2	60167ø

For maximum draw stud life, Greenlee recommends the use of battery or hydraulic drivers.

## Square and Special Square Punches

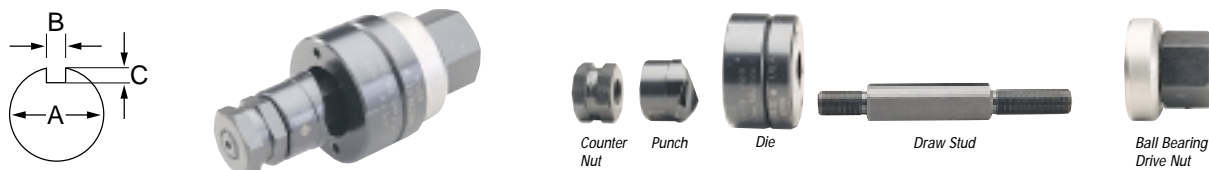


Hole Size			Maximum Capacity Mild Steel		Operation Type	Cat./UPC No.						Minimum Pilot Hole Ø		Weight		Optional Adapter for Hydraulic Drivers
						Punch Unit (Includes Punch, Die and Draw Stud)	Punch	Die	Draw Stud	BB Drive Nut	Counter Nut	Inch	mm	lbs.	kg	
1/2"	0.500 x 0.500	12.7 x 12.7	16	1.5	Hand/Hydr.	60001	60002	60003	60115	60120	05244	.375	9.5	1.1	.50	60114
5/8"	0.625 x 0.625	15.9 x 15.9	14	2.0	Hand/Hydr.	60004	60005	60006	60116	34733	04638	.500	12.7	1.5	.68	33967
3/4"	0.750 x 0.750	19.1 x 19.1	14	2.0	Hand/Hydr.	60007	60008	60009	60116	34733	04638	.500	12.7	1.5	.68	33967
7/8"	0.882 x 0.882	22.4 x 22.4	14	2.0	Hand/Hydr.	60259	60011	60012	60116	34733	04638	.500	12.7	1.8	.82	33967
	0.945 x 0.945	24.0 x 24.0	14	2.0	Hand/Hydr.	60013	60014	60015	60116	34733	04638	.500	12.7	2.3	1.0	33967
1"	1.000 x 1.000	25.4 x 25.4	14	2.0	Hand/Hydr.	60016	60017	60018	60117	60165	60258	.625	15.9	2.4	1.1	60167
	1.772 x 1.772	45.0 x 45.0	10	3.5	Hydr. Only	60287	60288	60289	60118	-	60235	1.188	30.2	6.0	2.7	Ø
1-13/16"	1.811 x 1.811	46.0 x 46.0	10	3.5	Hydr. Only	60019	60020	60021	60118	-	60235	1.188	30.2	6.2	2.8	Ø
2"	2.000 x 2.000	50.8 x 50.8	10	3.5	Hydr. Only	60168	60169	60170	60118	-	60235	1.188	30.2	6.9	3.1	Ø
2-11/16"	2.677 x 2.677	68.0 x 68.0	10	3.5	Hydr. Only	60171	60172	60173	60118	-	60235	1.188	30.2	10.1	4.6	Ø
3-5/8"	3.622 x 3.622	92.0 x 92.0	10	3.5	*Hydr. Only	60174	60175	60176	60118	-	60235	1.188	30.2	14.8	6.7	*
4-1/8"	4.125 x 4.125	104.8 x 104.8	10	3.5	*Hydr. Only	60177	60178	60179	60118	-	60235	1.188	30.2	18.8	8.5	*
	5.433 x 5.433	138.0 x 138.0	14	2.0	*Hydr. Only	60234	60023	60024	60118	-	60235	1.188	30.2	20	9.1	*
<b>SPECIAL SQUARE</b>																
0.886(A)	0.791(B)	22.5 Ø(A) 20.1(B)	14	2.0	Hand/Hydr.	60125	60126	60127	60116	34733	04638	.500	12.7	.7	.3	33967

For use with Hand and Foot Pump Hydraulic Drivers with Ram  
 For use with any Greenlee Hydraulic Driver, or Battery-Powered Driver

For maximum draw stud life, Greenlee recommends the use of battery or hydraulic drivers

## Key Punches

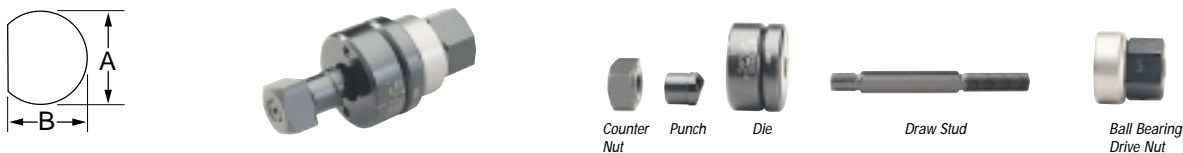


Hole Size						Maximum Capacity Mild Steel		Operation Type	Cat./UPC No.						Minimum Pilot Hole Ø		Weight		Optional Adapter for Hydraulic Drivers
									Punch Unit (Includes Punch, Die and Draw Stud)	Punch	Die	Draw Stud	BB Drive Nut	Counter Nut	Inch	mm	lbs.	kg	
0.481 Ø	0.055	.030	12.2 Ø	1.4	.8	16	1.5	Hand/Hydr.	60101	60102	60103	60115	60120	05244	.375	9.5	.88	.4	60114
1.171 Ø	0.123	.097	29.7 Ø	3.1	2.5	14	2.0	Hand/Hydr.	60104	60105	60106	60166	60165	60258	.875	23.8	2.3	1.0	60167
1.265 Ø	0.156	.097	32.1 Ø	4.0	2.5	14	2.0	Hand/Hydr.	60107	60108	60109	60166	60165	60258	.875	23.8	2.4	1.1	60167
1.328 Ø	0.102	.097	33.7 Ø	2.6	2.5	14	2.0	Hand/Hydr.	60110	60111	60112	60166	60165	60258	.875	23.8	2.4	1.1	60167

For use with any Greenlee Hydraulic Driver or Battery-Powered Driver

For maximum draw stud life, Greenlee recommends the use of battery or hydraulic drivers

## "D" Punches

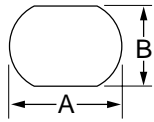


Hole Size				Maximum Capacity Mild Steel		Operation Type	Cat./UPC No.						Minimum Pilot Hole Ø		Weight		Optional Adapter for Hydraulic Drivers
							Punch Unit (Includes Punch, Die and Draw Stud)	Punch	Die	Draw Stud	BB Drive Nut	Counter Nut	Inch	mm	lbs.	kg	
0.500 Ø	0.469	12.7 Ø	11.9	16	2.0	Hand/Hydr.	60077	60078	60079	60115	60120	05244	.375	9.5	.9	.41	60114
0.625 Ø	0.594	15.9 Ø	15.1	14	2.0	Hand/Hydr.	60080	60081	60082	60113	34733	04638	.500	12.7	1.1	.50	33967
0.750 Ø	0.703	19.1 Ø	17.9	14	2.0	Hand/Hydr.	60083	60084	60085	60113	34733	04638	.500	12.7	1.2	.50	33967

For use with any Greenlee Hydraulic Driver or Battery-Powered Driver

For maximum draw stud life, Greenlee recommends the use of battery or hydraulic drivers

## Double "D" Punches

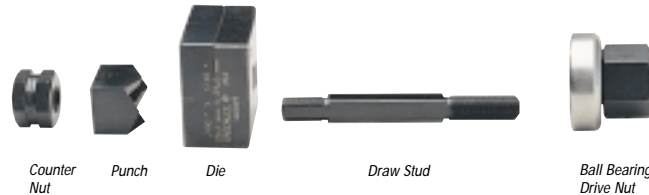
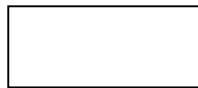


Hole Size				Maximum Capacity Mild Steel		Operation Type	Cat./UPC No.					Minimum Pilot Hole Ø		Weight		Optional Adapter for Hydraulic Drivers	
Inch		mm		GA	mm		Punch Unit (Includes Punch, Die and Draw Stud)	Punch	Die	Draw Stud	BB Drive Nut	Counter Nut	Inch	mm	lbs.		kg.
A	B	A	B														
0.769 Ø	0.642	19.5 Ø	16.3	14	2.0	Hand/Hydr.	60086	60087	60088	60113	34733	04638	.500	12.7	1.1	.50	33967Ø
0.795 Ø	0.697	20.2 Ø	17.6	14	2.0	Hand/Hydr.	60089	60090	60091	60113	34733	04638	.500	12.7	1.1	.50	33967Ø
0.913 Ø	0.756	23.2 Ø	19.2	14	2.0	Hand/Hydr.	60092	60093	60094	60113	34733	04638	.500	12.7	1.2	.54	33967Ø
0.913 Ø	0.795	23.2 Ø	20.2	14	2.0	Hand/Hydr.	60095	60096	60097	60113	34733	04638	.500	12.7	2	.9	33967Ø
1.375 Ø	1.125	34.9 Ø	28.6	14	2.0	Hand/Hydr.	60098	60099	60100	60166	60165	60258	.875	23.8	2.5	1.1	60167Ø

◊ For use with any Greenlee Hydraulic Driver or Battery-Powered Driver

For maximum draw stud life, Greenlee recommends the use of battery or hydraulic drivers

## Rectangular Punches



Hole Size		Maximum Capacity Mild Steel		Operation Type	Cat./UPC No.					Minimum Pilot Hole Ø		Weight		Optional Adapter for Hydraulic Drivers	
Inch	mm	GA	mm		Punch Unit (Includes Punch, Die and Draw Stud)	Punch	Die	Draw Stud	BB Drive Nut	Counter Nut	Inch	mm	lbs.		kg.
0.437 x 0.875	11.1 x 22.2	16	1.5		ØHand/Hydr.	60025	60026	60027	60115	60120	05244	.375	9.5		1.2
0.670 x 0.749	17.0 x 19.0	14	2.0	ØHand/Hydr.	60028	60029	60030	60116	34733	04638	.500	12.7	1.5	.68	33967Ø
0.750 x 1.140	19.1 x 29.0	14	2.0	ØHand/Hydr.	60031	60032	60033	60117	60165	60258	.625	15.9	2.3	1.0	60167Ø
0.750 x 1.310	19.1 x 33.3	14	2.0	ØHand/Hydr.	60034	60035	60036	60117	60165	60258	.625	15.9	2.3	1.0	60167Ø
0.861 x 1.018	21.9 x 25.9	14	2.0	ØHand/Hydr.	60037	60038	60039	60117	60165	60258	.625	15.9	2.3	1.0	60167Ø
0.866 x 1.181	22.0 x 30.0	14	2.0	ØHand/Hydr.	60040	60041	60042	60117	60165	60258	.625	15.9	2.4	1.1	60167Ø
0.866 x 1.654	22.0 x 42.0	14	2.0	ØHand/Hydr.	60043	60045	60046	60117	60165	60258	.625	15.9	2.9	1.3	60167Ø
0.990 x 1.140	25.1 x 29.0	14	2.0	ØHand/Hydr.	60047	60048	60049	60117	60165	60258	.625	15.9	2.6	1.2	60167Ø
1.250 x 1.380	31.8 x 35.1	14	2.0	ØHand/Hydr.	60050	60051	60052	60117	60165	60258	.625	15.9	3.1	1.4	60167Ø
1.312 x 2.625	33.3 x 66.7	10	3.5	ØHydr. Only	60053	60054	60055	60118	-	60235	1.188	30.2	5.1	2.3	Ø
1.378 x 2.047	35.0 x 52.0	10	3.5	ØHydr. Only	60056	60057	60058	60118	-	60235	1.188	30.2	6.1	2.8	Ø
1.378 x 2.559	35.0 x 65.0	10	3.5	ØHydr. Only	60059	60060	60061	60118	-	60235	1.188	30.2	6.8	3.1	Ø
1.378 x 3.228	35.0 x 82.0	14	2.0	*Hydr. Only	60062	60063	60064	60118	-	60235	1.188	30.2	7.7	3.5	*
1.378 x 4.409	35.0 x 112.0	14	2.0	*Hydr. Only	60065	60066	60067	60118	-	60235	1.188	30.2	9.2	4.2	*
1.811 x 3.622	46.0 x 92.0	10	3.5	*Hydr. Only	60068	60069	60070	60118	-	60235	1.188	30.2	8.9	4.0	*
2.250 x 3.500	57.2 x 88.9	10	3.5	*Hydr. Only	60071	60072	60073	60118	-	60235	1.188	30.2	10.1	4.6	*
2.677 x 5.433	68.0 x 138.0	14	2.0	*Hydr. Only	60074	60075	60076	60118	-	60235	1.188	30.2	16.1	7.3	*

\*For use with Hand and Foot Pump Hydraulic Drivers with Ram  
 ◊ For use with any Greenlee Hydraulic Driver or Battery-Powered Driver

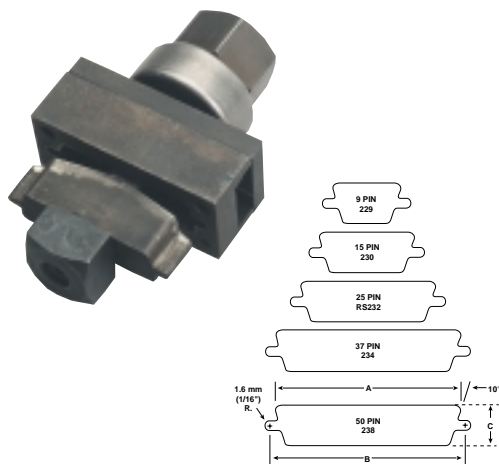
For maximum draw stud life, Greenlee recommends the use of battery or hydraulic drivers

## Ordering Special Size Knockout Punch Units

Greenlee will manufacture special punch sizes upon request. Please complete the information below and contact your Greenlee distributor. Allow 6 - 8 weeks for delivery. NOTE: A drawing will be helpful for accuracy of information.

- Specify Hole Size \_\_\_\_\_ Hole Size Tolerance + or - \_\_\_\_\_
- Specify Shape  Square  Rectangular  Round  Special Square  Key  "D"  Double "D"  Oillight with Notches  Other \_\_\_\_\_
- Specify Material Being Punched - Type \_\_\_\_\_ Thickness \_\_\_\_\_
- Specify Drive Method - Hydraulic \_\_\_\_\_ Manual (BB Nut) \_\_\_\_\_

## Electronic Connector Panel Punches



- Cut-out and mounting slots are punched in one operation.
- Drill only one 7/16" (11.1 mm) pilot hole.  
(See catalog page 61 for Kwik Stepper® step bits.)
- Fast, accurate panel punching with no sawing or filing required.
- Universal size punches for front or back mount of TRW Cinch and ITT Cannon-type or equivalent connectors in 9, 15, 25, 37 or 50-pin configurations.
- U.S. Patent No. 4,899,447.

### SPECIFICATIONS

Operation: Manual with a wrench; Quick Draw™ and Quick Draw 90™ hydraulic drivers, Battery Driver, Ram and Pump hydraulic drivers.  
 Capacity: 16 gauge (1.5 mm) mild steel; 10 gauge (3.5 mm) aluminum.

Punch Unit		No. of Pins	Dimensions			Replacement Cat./UPC No.					Weight	
Cat. No.	UPC No.		A	B	C	Punch	Die Unit	Draw Stud	Square Counter Nut	Drive Nut	lbs.	kg.
229	34436	9	.787" (20.0 mm)	.982" (24.9 mm)	.469" (11.9 mm)	34441	35196	34421	04638	34733	1.4	.64
231	34437	15	1.127" (28.6 mm)	1.309" (33.3 mm)	.469" (11.9 mm)	34442	35197	34421	04638	34733	1.5	.68
RS232	34420	25	1.655" (42.0 mm)	1.853" (47.1 mm)	.469" (11.9 mm)	34418	35198	34421	04638	34733	2.0	.91
234	34429	37	2.296" (58.3 mm)	2.497" (63.4 mm)	.469" (11.9 mm)	34427	35199	34421	04638	34733	2.0	.91
238	34444	50	2.201" (55.9 mm)	2.402" (61.0 mm)	.579" (14.7 mm)	34443	35200	34421	04638	34733	2.0	.91

For maximum draw stud life, Greenlee recommends the use of battery or hydraulic drivers

## Metal Stud Punches



- Punch up through 20 gauge (0.9 mm) steel studs in one stroke.
- Aluminum head provides strength with minimum weight, reducing operator fatigue.
- Contoured handle design gives better operator leverage and makes it possible to punch in tight places.
- Self-stripping design eliminates punch hang-ups.
- Automatically centers holes on standard studs.
- Conversion kit available to upgrade early models from 24 gauge to 20 gauge maximum capacity.

### SPECIFICATIONS

Capacity: 709 - 1-5/8" (41.3 mm) and wider studs.  
 20 gauge (0.9 mm) steel studs.  
 710 - 2-1/2" (63.4 mm) and wider studs.  
 20 gauge (0.9 mm) steel studs.

Cat. No.	UPC No.	Description	Weight	
			lbs.	kg.
709	22280	7/8" (22.2 mm) Diameter Stud Punch	7	3.2
710	21285	1-11/32" (34.1 mm) Diameter Stud Punch	7.5	3.5
30968	30968	Conversion Kit - Upgrades early model 709 or 710 from 24 to 20 gauge maximum capacity		
121AV	04006	Punch for 709 - Accessory		
22286	22286	Die for 709 - Accessory		
24823	24823	Punch for 710 - Accessory		
21297	21297	Die for 710 - Accessory		